

V3 Companies
7325 Janes Avenue
Woodridge, IL 60517
630.724.9200 phone
630.724.9202 fax
www.v3co.com



FOR INDEX OF SHEETS, SEE SHEET NO. 2

DESCRIPTION OF PROJECT:

THIS IMPROVEMENT CONSISTS OF REMOVAL AND REPLACEMENT OF THE BRIDGES OVER THE KISHWAUKEE RIVER AND KISHWAUKEE RIVER OVERFLOW AND RAISING THE PROFILE TO MEET THE FREE BOARD AND VERTICAL CLEARANCE REQUIREMENTS AND ALL INCIDENTAL AND COLLATERAL WORK AS NECESSARY TO COMPLETE IMPROVEMENT SHOWN HEREIN AND AS DESCRIBED IN THE SPECIFICATIONS.

DESIGN DESIGNATION 558 (20) OTHER PRINCIPAL ARTERIAL 3.41 (FD-20)

TRAFFIC DATA:

ILLINOIS ROUTE 23
POSTED SPEED 50 MPH
DESIGN SPEED 55 MPH
ADT 7,300 (2005) 10,125 (2021)

PROJECT LOCATED IN:
CITY OF MARENGO

STATE OF ILLINOIS
DEPARTMENT OF TRANSPORTATION
DIVISION OF HIGHWAYS

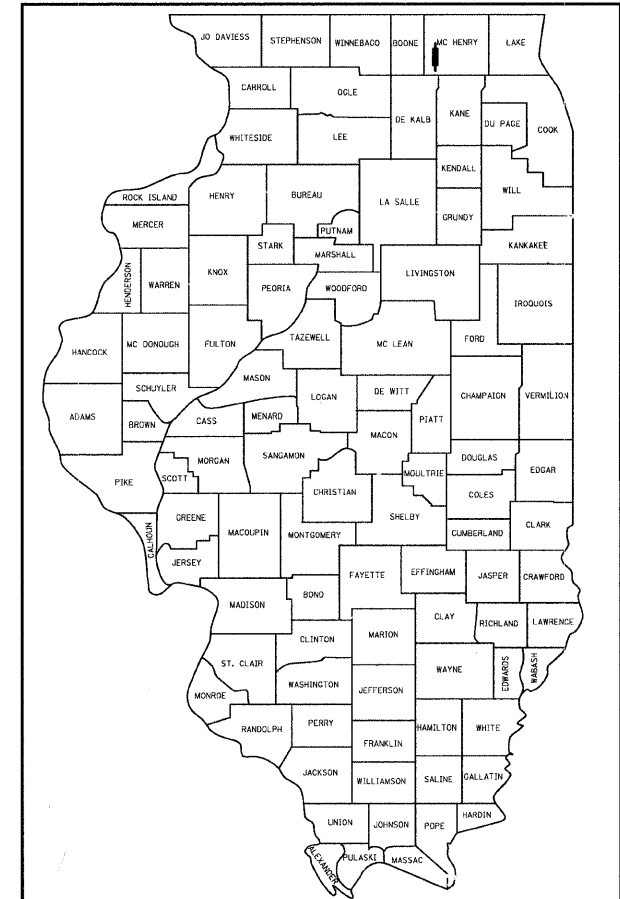
PROPOSED
HIGHWAY PLANS

FAP ROUTE 324(ILLINOIS ROUTE 23)
SECTION: 23B-1
OVER KISHWAUKEE RIVER AND
KISHWAUKEE RIVER OVER FLOW
BRIDGE REMOVAL AND
REPLACEMENT AND RAISING PROFILE
PROJECT NO: BRF-0324(019)
MCHENRY COUNTY

C-91-087-05

F.A.P. RTE.	SECTION	COUNTY	TOTAL SHEETS	SHEET NO.
324	23B-1	MCHENRY	97	1
FED. ROAD DIST. NO. 1	ILLINOIS	CONTRACT NO. 62892		
D-91-087-05				

97+4+2=103



LOCATION OF SECTION INDICATED THUS: - ■ -

STATE OF ILLINOIS
DEPARTMENT OF TRANSPORTATION
DIVISION OF HIGHWAYS

SUBMITTED AUGUST 14, 2008
Diana M. O'Keefe *DE* DISTRICT ENGINEER

December 5, 2008
Eric E. Horn *EE* INTERIM ENGINEER OF DESIGN AND ENVIRONMENT

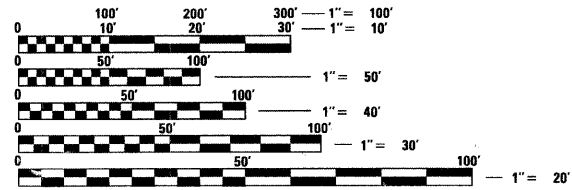
December 5, 2008
Christine M. Reed *CR* DIRECTOR OF HIGHWAYS, CHIEF ENGINEER

PRINTED BY THE AUTHORITY
OF THE STATE OF ILLINOIS

August 8, 2008
Christopher J. Burke
ILLINOIS LICENSED STRUCTURAL ENGINEER
NO. 081-005134
EXPIRATION DATE: 11-30-2008

August 8, 2008
David P. Heslinga
ILLINOIS REGISTERED PROFESSIONAL ENGINEER
NO. 062-036274
EXPIRATION DATE: 11-30-2008

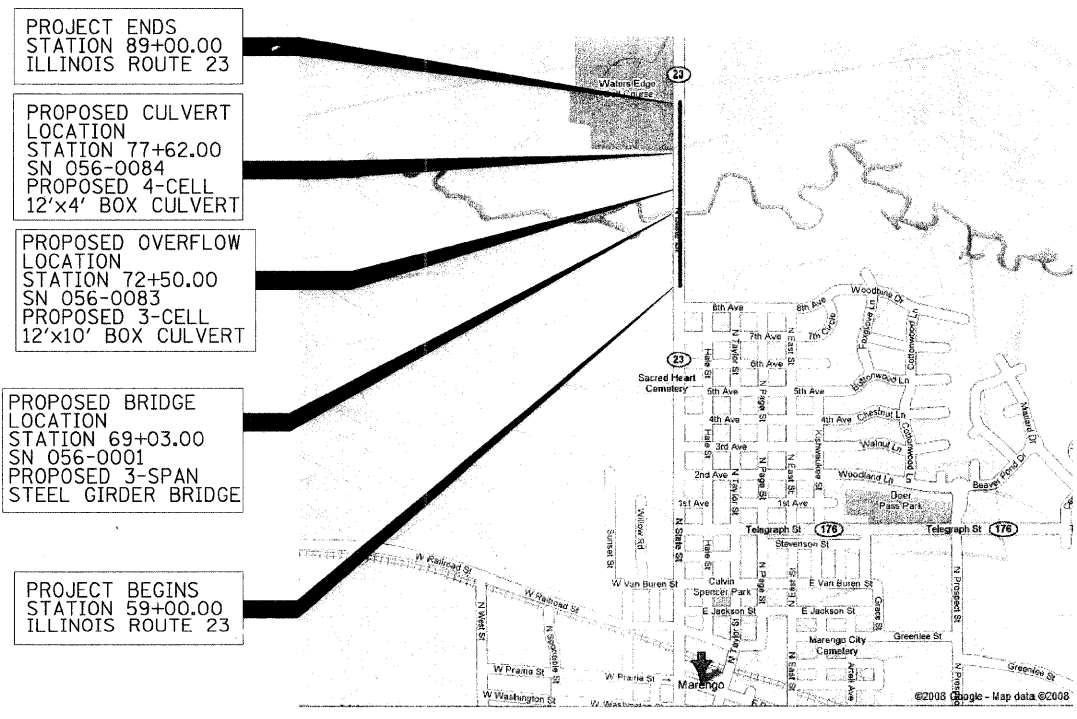
DISTRICT ONE BUREAU OF DESIGN PROJECT MANAGER: ISAAC KWARTENG, (847) 705-4230



FULL SIZE PLANS HAVE BEEN PREPARED USING STANDARD ENGINEERING SCALES. REDUCED SIZED PLANS WILL NOT CONFORM TO STANDARD SCALES. IN MAKING MEASUREMENTS ON REDUCED PLANS, THE ABOVE SCALES MAY BE USED.

J.U.L.I.E.
JOINT UTILITY LOCATION INFORMATION FOR EXCAVATION
1-800-892-0123
OR 811

CONTRACT NO. 62892



- PROJECT ENDS
STATION 89+00.00
ILLINOIS ROUTE 23
- PROPOSED CULVERT
LOCATION
STATION 77+62.00
SN 056-0084
PROPOSED 4-CELL
12'x4' BOX CULVERT
- PROPOSED OVERFLOW
LOCATION
STATION 72+50.00
SN 056-0083
PROPOSED 3-CELL
12'x10' BOX CULVERT
- PROPOSED BRIDGE
LOCATION
STATION 69+03.00
SN 056-0001
PROPOSED 3-SPAN
STEEL GIRDER BRIDGE
- PROJECT BEGINS
STATION 59+00.00
ILLINOIS ROUTE 23

PROJECT NET/GROSS LENGTH 3,000 FEET (.57 MILES)