





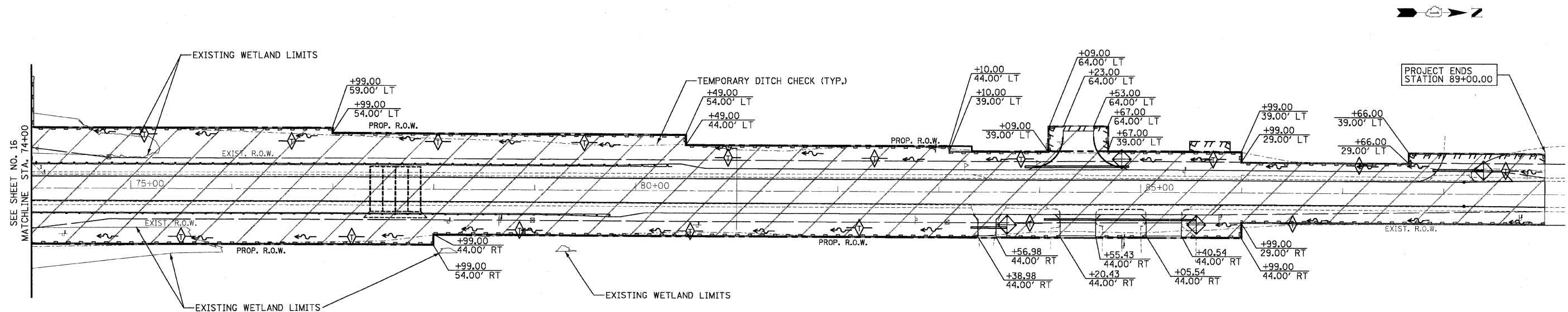


EROSION & SEDIMENT CONTROL ITEMS

- PERIMETER EROSION BARRIER 
- TEMPORARY DITCH CHECK 
- SEDIMENT BASIN 
- FLOW LINE 
- TEMPORARY SEDIMENT TRAP 
- CONSTRUCTION LIMITS 

TEMPORARY EROSION CONTROL NOTES

1. THE CONTRACTOR WILL BE REQUIRED TO IMPLEMENT AND MAINTAIN EROSION CONTROL MEASURES IMMEDIATELY AFTER STRIPPING OF EXISTING VEGETATION.
2. NO RUNOFF FROM STRIPPED AREAS WILL LEAVE THE SITE OTHER THAN THROUGH SEDIMENTATION/STILLING BASINS. THE CONTRACTOR WILL ADJUST HIS OPERATIONS AND IMPLEMENT EROSION CONTROL MEASURES ACCORDINGLY.
3. THE CONTRACTOR SHALL SURROUND ALL EARTH STOCKPILES WITH SEDIMENT CONTROL, SILT FENCE.
4. EROSION CONTROL MEASURES SHALL BE INSPECTED BY THE CONTRACTOR AND ENGINEER WITHIN 24 HOURS OF ANY STORM EXCEEDING 1/2" OF PRECIPITATION.
5. THE CONTRACTOR SHALL TAKE ALL PRECAUTIONS TO PREVENT POLLUTION OF STORM WATER AND SHALL FOLLOW IEPA & IDOT CONSTRUCTION MEMORANDUM NO. 02-60
6. STABILIZATION MEASURES SHALL BE INITIATED AS SOON AS PRACTICAL, BUT NO MORE THAN 14 DAYS AFTER CONSTRUCTION ACTIVITY HAS CEASED IN AN AREA WHERE CONSTRUCTION ACTIVITY WILL NOT OCCUR FOR A PERIOD OF 21 OR MORE CALENDAR DAYS.
7. THE CONTRACTOR SHALL APPLY TEMPORARY EROSION CONTROL SEEDING AND MULCH, METHOD 2 TO ALL ERODIBLE BARE EARTH AREAS WITHIN THE CONTRACT LIMITS EACH WEEK, REGARDLESS OF WEATHER CONDITIONS OR PROGRESS OF THE WORK, UNLESS OTHERWISE DIRECTED BY THE ENGINEER. ERODIBLE EMBANKMENT AND EXCAVATION AREAS WHERE WORK IS IN PROGRESS SHALL BE INCLUDED ON THE AREAS TO BE SEEDED.



| | | | | | | | | | | | | |
|-----------------------|--------------------|----------------|---------------------|---|-----------------------------|--|------------------|-------------------|--------------------|-----------------|--|--|
| FILE NAME = #FILE# | USER NAME = #USER# | DESIGNED - GJM | REVISED - 5/13/2008 | STATE OF ILLINOIS DEPARTMENT OF TRANSPORTATION | EROSION CONTROL PLAN | F.A.P. RTE. 324 | SECTION 23B-1 | COUNTY MCHENRY | TOTAL SHEETS 97 | SHEET NO. 27 | | |
| | | | | | | SCALE: 1" = 50' SHEET NO. 2 OF 2 SHEETS STA. 59+00 TO STA. 74+00 | | | CONTRACT NO. 62892 | | | |
| | | | | | | FED. ROAD DIST. NO. 1 ILLINOIS FED. AID PROJECT | | | | | | |
| | | | | | | | | | | | | |