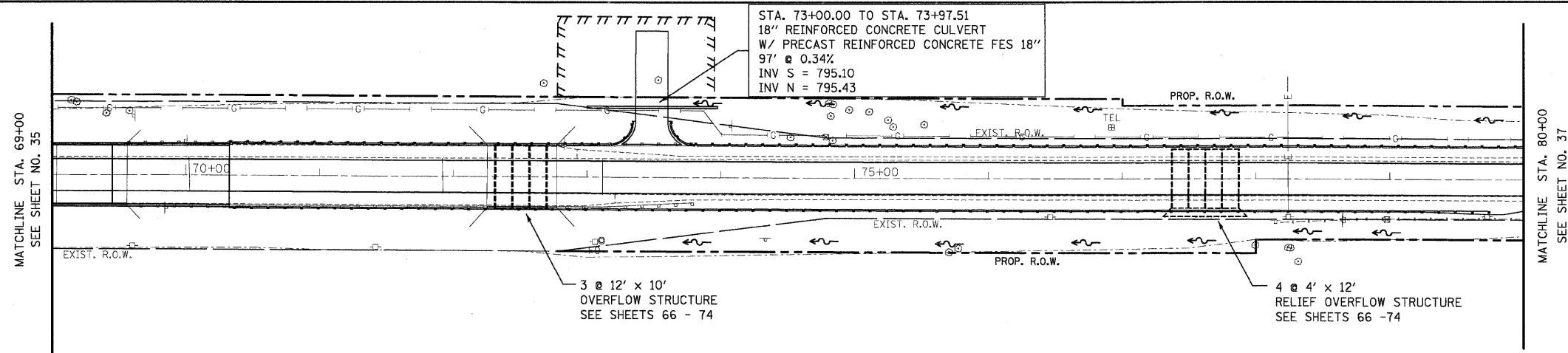
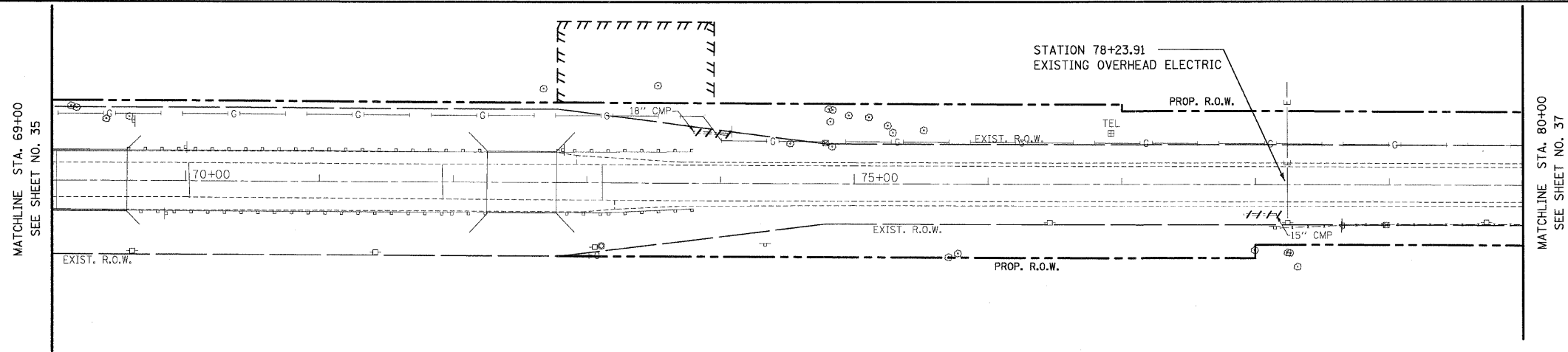
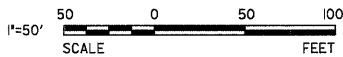


LEGEND

- [R] STRUCTURE TO BE REMOVED
- [ADJ] STRUCTURE TO BE ADJUSTED
- [REL] STRUCTURE TO BE RELOCATED
- /// STORM SEWER REMOVAL

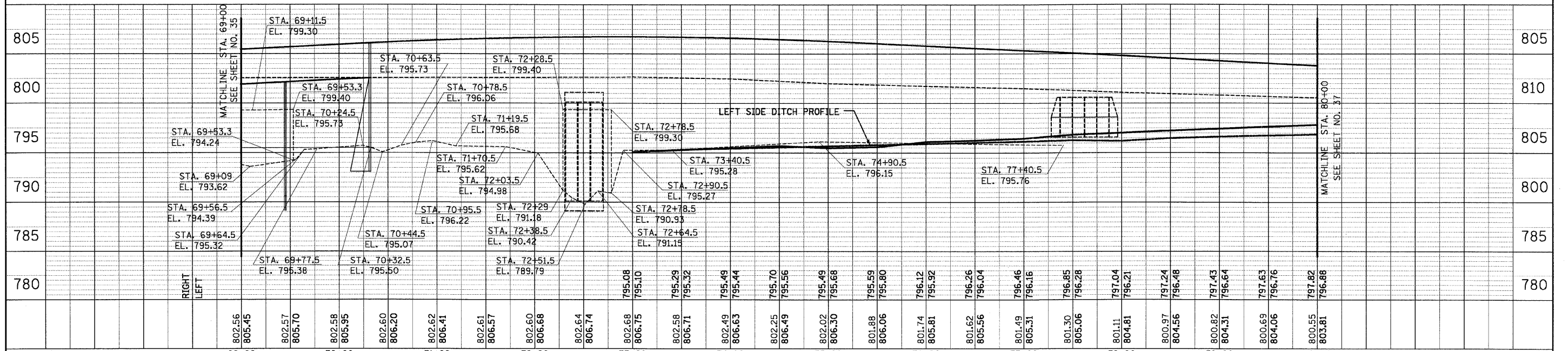
PLAN	DESIGNED	DATE
	BY	
	CHECKED	
	PLOTTED	
	NOTE BOOK	
	NO.	
	STRUCTURE	
	NOTATIONS	
	CHKD	

PROFILE	DESIGNED	DATE
	BY	
	CHECKED	
	PLOTTED	
	NOTE BOOK	
	NO.	
	STRUCTURE	
	NOTATIONS	
	CHKD	



NOTES

1. OFFSETS OF CULVERTS AND SKEW ANGLES ARE PROVIDED ON THE SCHEDULE OF QUANTITIES



FILE NAME =	USER NAME = #USER#	DESIGNED - GJM	REVISED - 5/13/2008	STATE OF ILLINOIS DEPARTMENT OF TRANSPORTATION	DRAINAGE AND UTILITIES	F.A.P. NO. 324	SECTION 23B-1	COUNTY MCHENRY	TOTAL SHEETS 97	SHEET NO. 36		
#FILE#	PLOT SCALE = #SCALE#	CHECKED - E.J.L.	REVISED - 7/18/2008			SCALE: 1" = 50'	SHEET NO. 2 OF 3 SHEETS	STA. 69+00 TO STA. 80+00	CONTRACT NO. 62892			
	PLOT DATE = 7/17/2008	DRAWN - GJM	REVISED -			FED. ROAD DIST. NO. 1 ILLINOIS FED. AID PROJECT						
		CHECKED - E.J.L.	REVISED -									