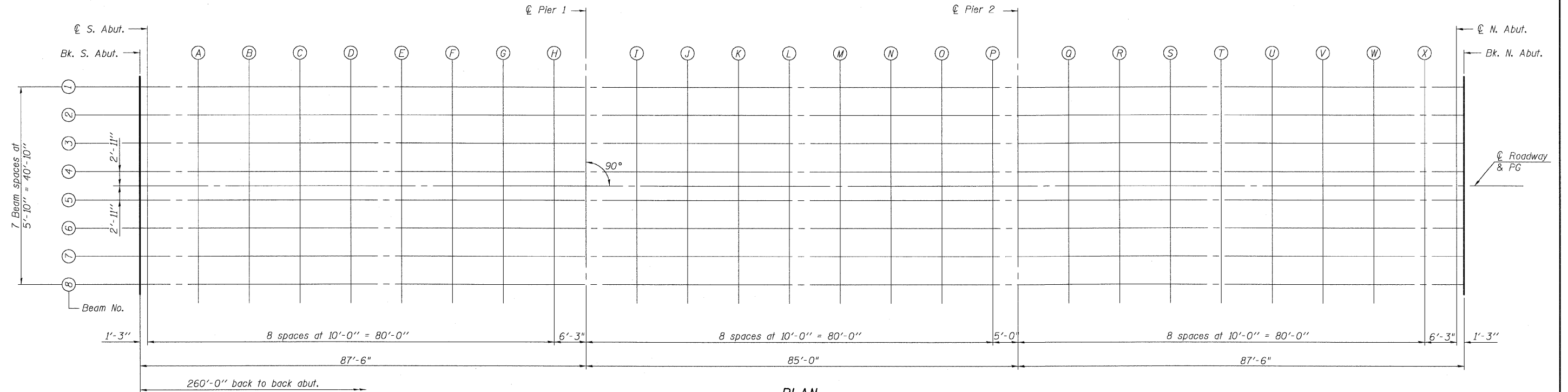
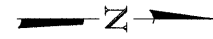


STATE OF ILLINOIS  
DEPARTMENT OF TRANSPORTATION

ROUTE NO. F.A.P. 324	SECTION 23B-1	COUNTY MCHENRY	TOTAL SHEETS 97	SHEET NO. 43	SHEET NO. 3 25 SHEETS
FED. ROAD DIST. NO. 1		ILLINOIS FED. AID PROJECT-			

Contract # 62892



PLAN

DESIGNED	CJB
CHECKED	PWO
DRAWN	DRP
CHECKED	PJM



V3 Companies of Illinois Ltd.  
7325 Janes Avenue  
Woodridge, IL 60517  
630.724.9200 phone  
630.724.9202 fax  
www.v3co.com

TOP OF SLAB ELEVATIONS  
ILL. ROUTE 23 OVER  
KISHWAUKEE RIVER  
F.A.P. RT. 324  
MCHENRY COUNTY  
STATION 69+02.50  
STRUCTURE NO. 056-0001