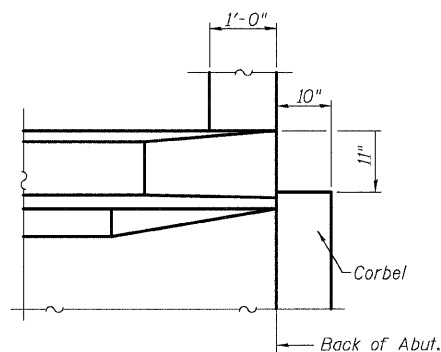


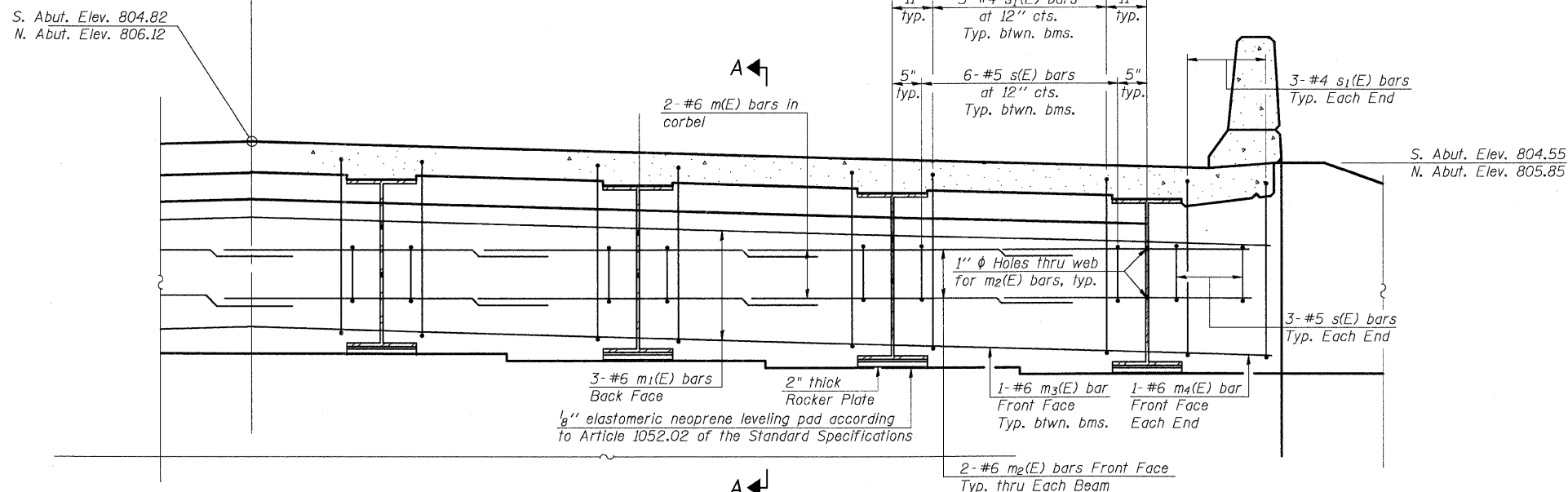
STATE OF ILLINOIS
DEPARTMENT OF TRANSPORTATION

ROUTE NO.	SECTION	COUNTY	TOTAL SHEETS	SHEET NO.	SHEET NO. 11
F.A.P. 324	23B-1	McHENRY	97	51	25 SHEETS
FED. ROAD DIST. NO. 1	ILLINOIS	FED. AID PROJECT	Contract # 62892		



PLAN VIEW
(Corbel Notch for Traffic Barrier)

CL IL Rte. 23
symmetrical about

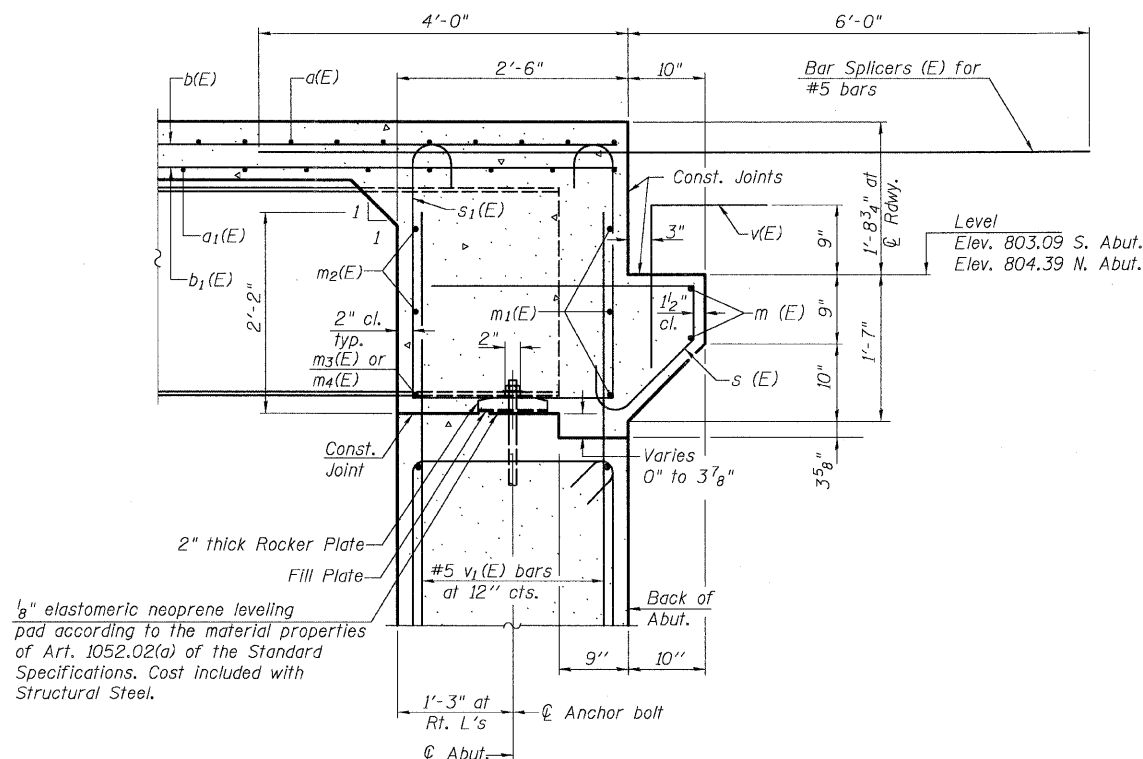


DIAPHRAGM ELEVATION AT ABUTMENT

MIN. BAR LAP
(Diaphragm)
#6 bar = 2'-7"

Notes:
Reinforcement bars in diaphragm are billed with superstructure on sheet 10 of 25.
Concrete in diaphragm is included with Concrete Superstructure on sheet 10 of 25.
For details of bars s(E) & s1(E) see sheet 10 of 25.
The s(E) and s1(E) bars shall be placed parallel to the beams. Spacing for these bars shall be at right angles to the beams.

MIN. BAR LAP
#6 bar = 2'-9"



SECTION A-A

Dimensions at right angles to abutment, except as shown.

DESIGNED	CJB
CHECKED	PWO
DRAWN	DRP
CHECKED	PJM



V3 Companies of Illinois Ltd.
7325 Janes Avenue
Woodridge, IL 60517
630.724.9200 phone
630.724.9202 fax
www.v3co.com

SUPERSTRUCTURE
ILL. ROUTE 23 OVER
KISHWAUKEE RIVER
F.A.P. RT. 324
McHENRY COUNTY
STATION 69+02.50
STRUCTURE NO. 056-0001