

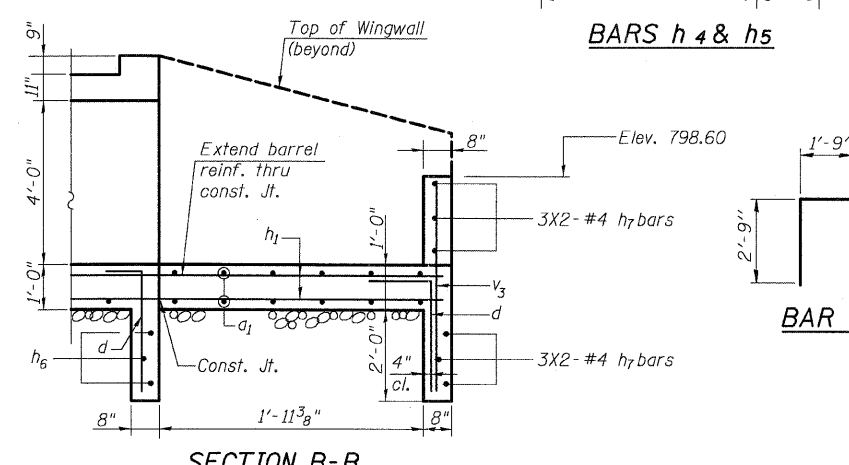
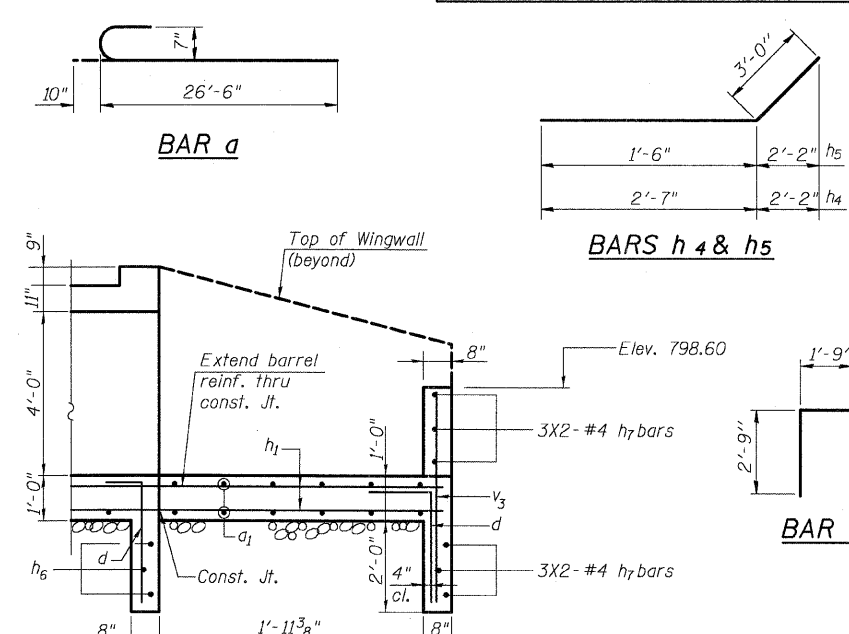
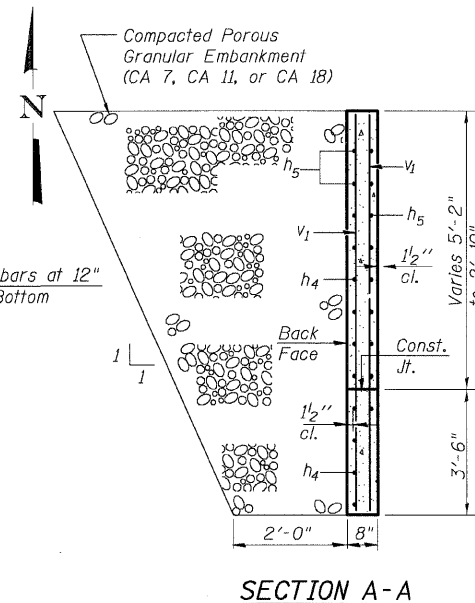
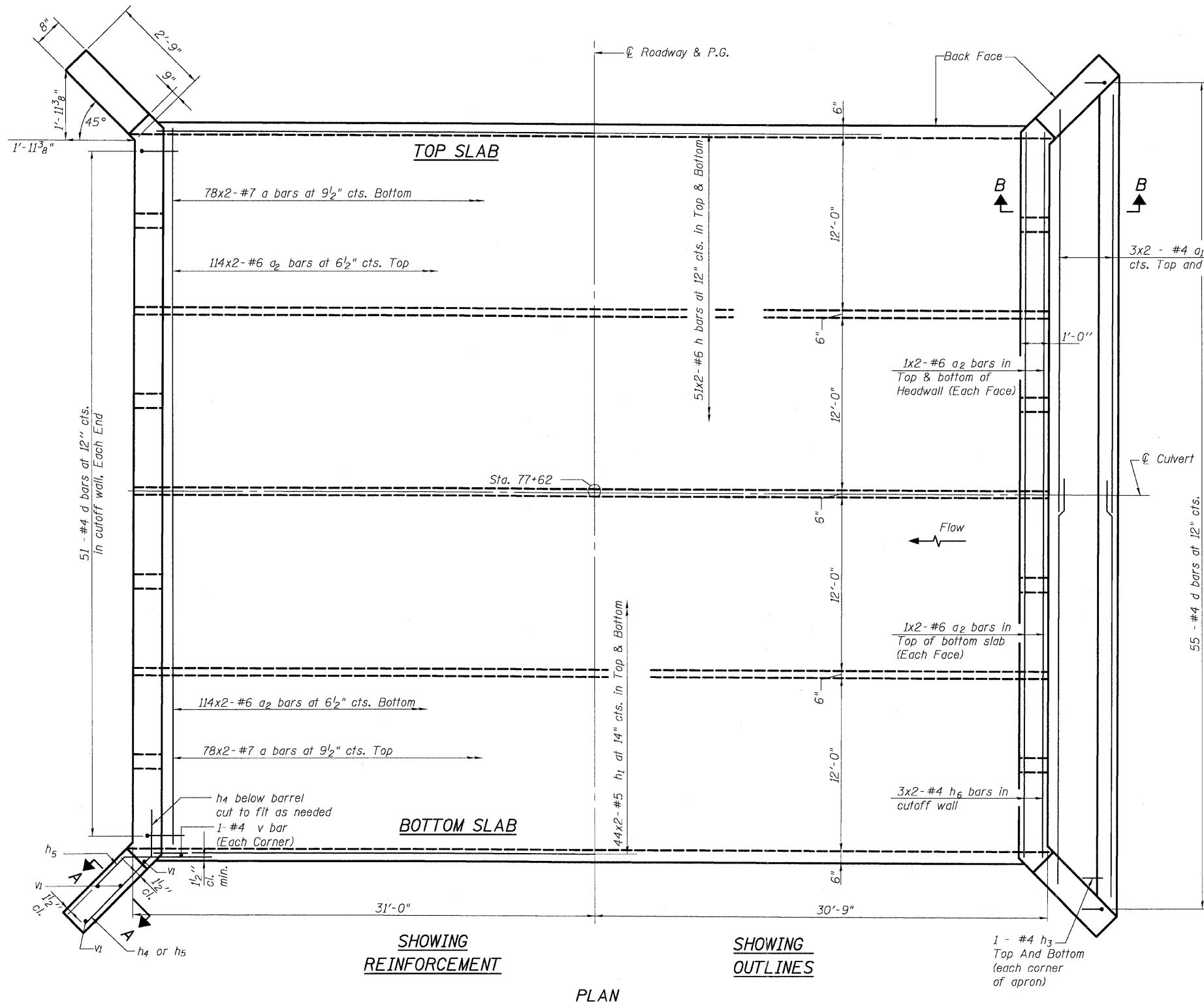
STATE OF ILLINOIS
DEPARTMENT OF TRANSPORTATION

ROUTE NO.	SECTION	COUNTY	SHEETS	SHEET NO.
F.A.P. 324	23B-1	MCHENRY	97	72
FED. ROAD DIST. NO. 1	ILLINOIS	FED. AID PROJECT		

Contract # 62892

BILL OF MATERIAL

Bar	No.	Size	Length	Shape
a	312	#7	27'-4"	C
a ₁	12	#4	27'-8"	—
a ₂	480	#6	26'-1"	—
d	157	#4	4'-6"	—
h	204	#6	32'-9"	—
h ₁	176	#5	32'-10"	—
h ₂	40	#5	31'-7"	—
h ₃	4	#4	1'-8"	—
h ₄	28	#4	5'-7"	—
h ₅	28	#4	4'-6"	—
h ₆	12	#4	25'-9"	—
h ₇	12	#4	27'-8"	—
v	170	#4	5'-8"	—
v ₁	16	#4	8'-6"	—
v ₂	249	#7	5'-8"	—
v ₃	55	#5	4'-8"	—
Concrete Box Culverts			Cu. Yd.	264.3
Reinforcement Bars			Pound	58,820



SHOWING REINFORCEMENT **SHOWING OUTLINES**

PLAN

DESIGNED	PWO
CHECKED	CJB
DRAWN	DRP
CHECKED	PJM

Notes: A distance of half the length of the wingwall but not less than six feet of the barrel shall be poured monolithically with the wingwalls. Bars indicated thus 44x2 #5 etc. indicates 44 lines of bars with 2 lengths per line.

Bar Laps Barrels:
Min. #4 bar = 1'-4"
Min. #5 bar = 1'-8"
Min. #6 bar = 2'-0"
Min. #7 bar = 2'-9"



V3 Companies of Illinois Ltd.
7325 Janes Avenue
Woodridge, IL 60517
630.724.9200 phone
630.724.9202 fax
www.v3co.com

SLAB REINFORCEMENT PLAN
ILLINOIS ROUTE 23 OVER
KISHWAUKEE RIVER OVERFLOW NO. 2
F.A.P. ROUTE 324
MCHENRY COUNTY
STA. 77+62.00
STRUCTURE NO. 056-0084