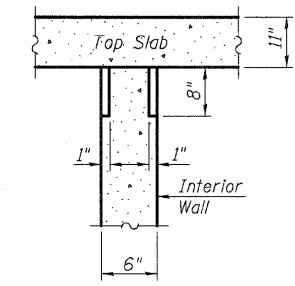
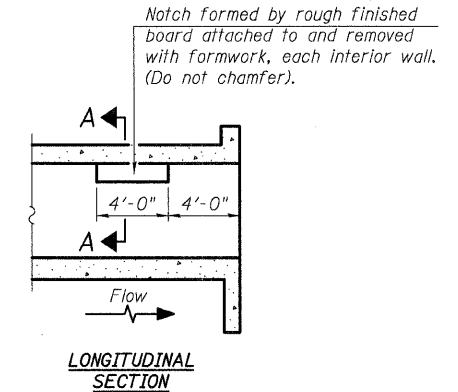
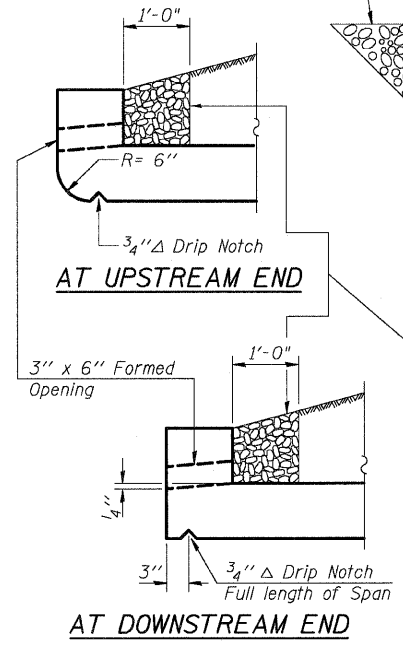
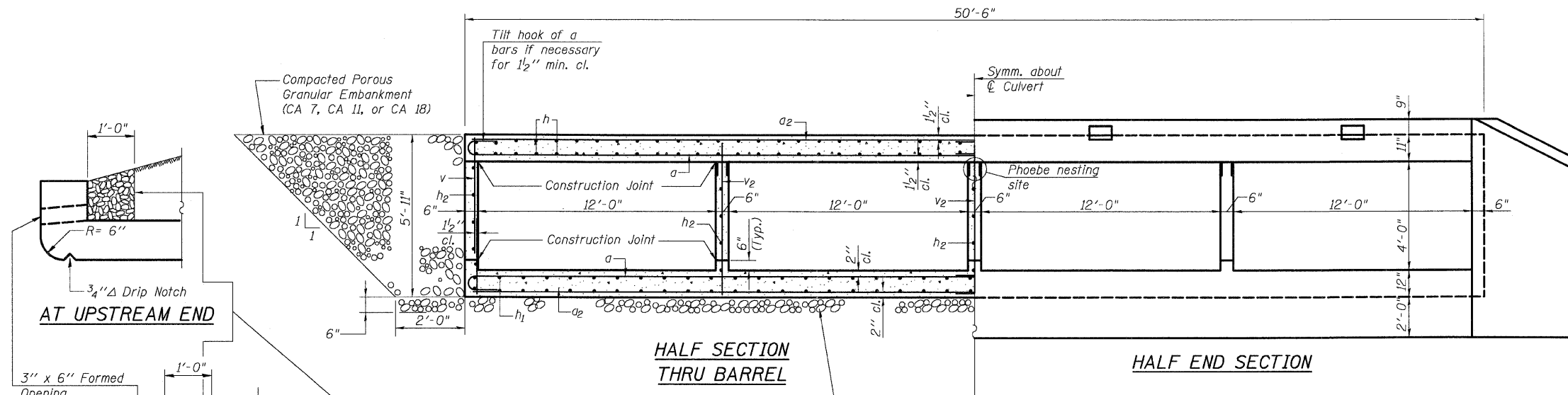


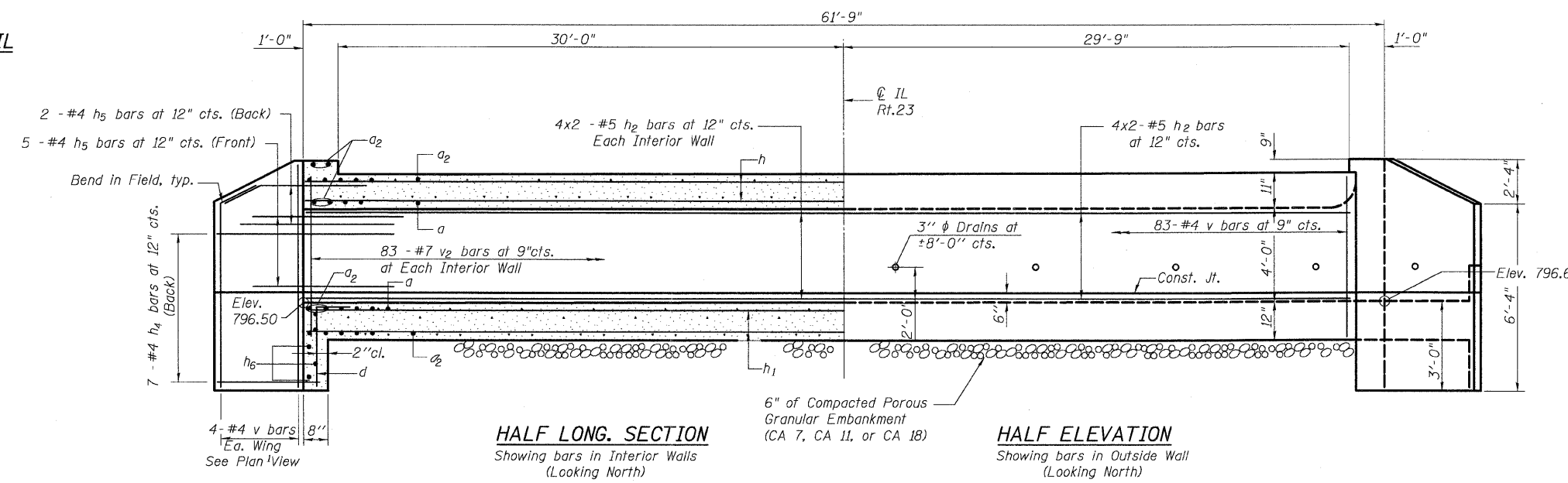
STATE OF ILLINOIS
DEPARTMENT OF TRANSPORTATION

ROUTE NO.	SECTION	COUNTY	DATE SHEETS	SHEET NO.
F.A.P. 324	23B-1	McHENRY	97 73	4 SHEETS
FED. ROAD DIST. NO. 1	ILLINOIS	FED. AID PROJECT-		

Contract # 62892



PHOEBE NESTING SITE DETAILS
(Downstream End Only)



DESIGNED	PWO
CHECKED	CJB
DRAWN	DRP
CHECKED	PJM



V3 Companies of Illinois Ltd.
 7325 Janes Avenue
 Woodridge, IL 60517
 630.724.9200 phone
 630.724.9202 fax
 www.v3co.com

SECTIONS AND DETAILS
ILLINOIS ROUTE 23 OVER
KISHWAUKEE RIVER OVERFLOW NO. 2
F.A.P. ROUTE 324
McHENRY COUNTY
STA. 77+62.00
STRUCTURE NO. 056-0084