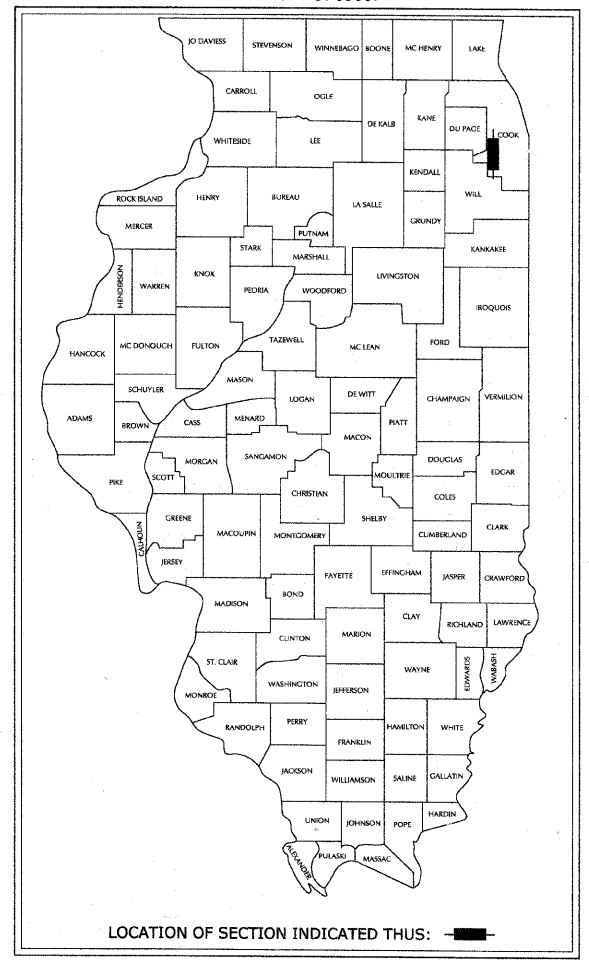


F.A.U. RTE.	SECTION	COUNTY	TOTAL SHEETS	SHEET No.
1004	08-00079-01-FP	COOK	46	1
FED. ROAD DIST. NO. 1 ILLINOIS			FED. AID PROJECT	

STATE OF ILLINOIS
DEPARTMENT OF TRANSPORTATION
DIVISION OF HIGHWAYS
**PLANS FOR PROPOSED
FEDERAL AID HIGHWAY**
FAU ROUTE 1004 (BLUFF AVENUE)
SECTION 08-00079-01-FP
COSSITT AVENUE (FAU ROUTE 1365) TO
BURLINGTON AVENUE (FAU ROUTE 3557)
PROJECT NO. M-9003 (113)
COOK COUNTY
C-91-107-09

CONTRACT NO. 63007

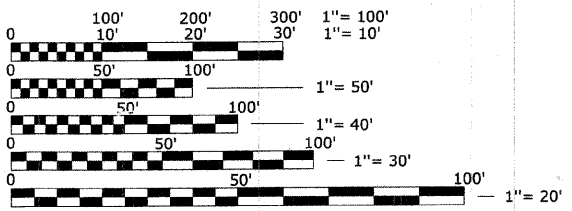
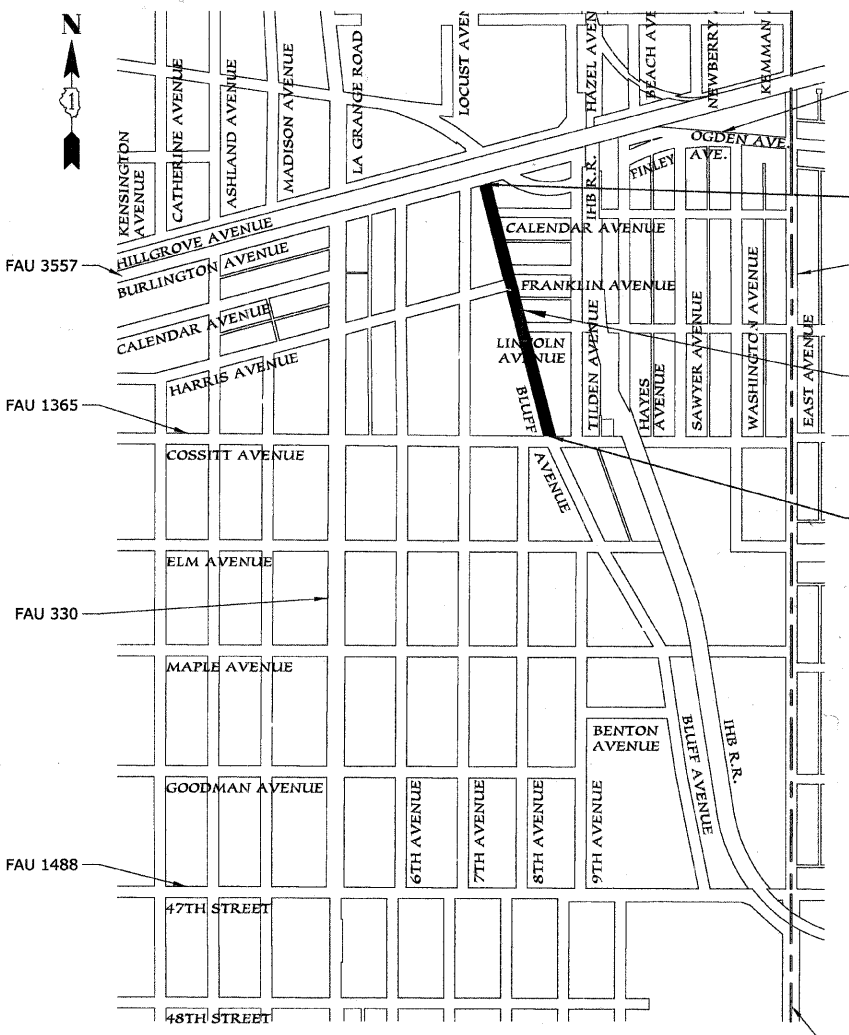


FOR INDEX OF SHEETS SEE SHEET NO. 2

PROJECT STAGE 1

PROJECT LOCATED IN THE VILLAGE OF LA GRANGE

SECTION 4,
TOWNSHIP 38N,
RANGE 12E
LYONS TOWNSHIP



FULL SIZE PLANS HAVE BEEN PREPARED USING STANDARD ENGINEERING SCALES; REDUCED SIZED PLANS WILL NOT CONFORM TO STANDARD SCALES. IN MAKING MEASUREMENTS ON REDUCED PLANS, THE ABOVE SCALES MAY BE USED.

FOR UTILITY INFORMATION
CALL J.U.L.I.E.
1-800-892-0123

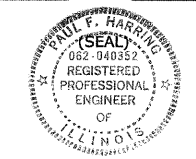
TRAFFIC DATA
4,157 ADT BLUFF AVENUE (2025 EST.)
SPEED LIMIT = 25 MPH

GROSS LENGTH OF PROJECT = 1,572.32 LINEAL FEET = 0.298 MILES
NET LENGTH OF PROJECT = 1,572.32 LINEAL FEET = 0.298 MILES

THESE PLANS WERE PREPARED BY HEUER AND ASSOCIATES, P.C. UNDER THE DIRECT SUPERVISION OF PAUL F. HARRING, P.E., A REGISTERED PROFESSIONAL ENGINEER OF THE STATE OF ILLINOIS.

Paul F. Harring
PAUL F. HARRING, P.E.
REGISTRATION No. 62-040352
EXPIRATION DATE: 11/30/09

DATE: 8-29-2008



HEUER AND ASSOCIATES
Consulting Engineers
2315 Enterprise Drive - Suite 102 Westchester, IL 60154-5811 708-492-1000

STATE OF ILLINOIS
DEPARTMENT OF TRANSPORTATION
DIVISION OF HIGHWAYS

APPROVED *[Signature]* 10/20/08
VILLAGE PRESIDENT, VILLAGE OF LA GRANGE

PASSED *[Signature]* 11/06/08 2008
DISTRICT 1 ENGINEER OF LOCAL ROADS AND STREETS

RELEASING FOR BID BASED ON LIMITED REVIEW
November 7, 2008
[Signature]
DEPUTY DIRECTOR OF HIGHWAYS, REGION 1 ENGINEER

PRINTED BY AUTHORITY OF THE STATE OF ILLINOIS

FIELD ENGINEER - MARILYN SOLOMON 847-705-4407