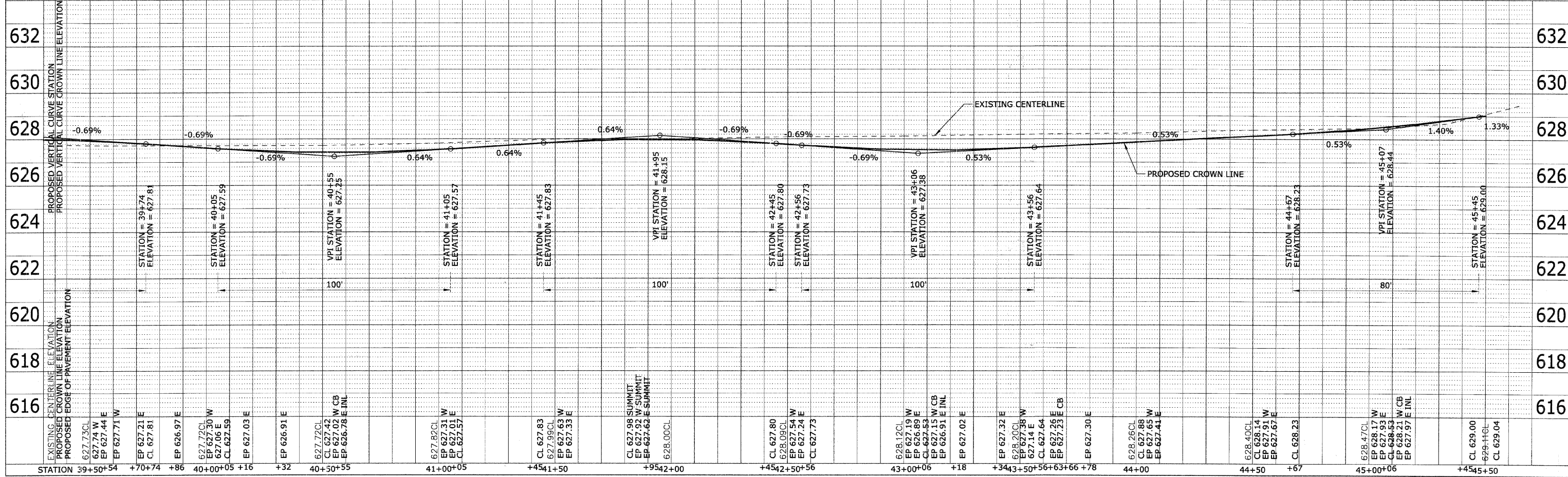


- NOTES:**
1. CURB RAMPS ACCESSIBLE TO THE DISABLED SHALL BE TYPE B.
 2. ALL STATIONS AND OFFSETS ARE TO THE EDGE OF PAVEMENT UNLESS OTHERWISE NOTED.

SCALE:
 1" = 20' H
 1" = 2' V



DATE	
BY	
CHECKED	
DATE	
NO.	
FILE NAME	

DATE	
BY	
CHECKED	
DATE	
NO.	
FILE NAME	