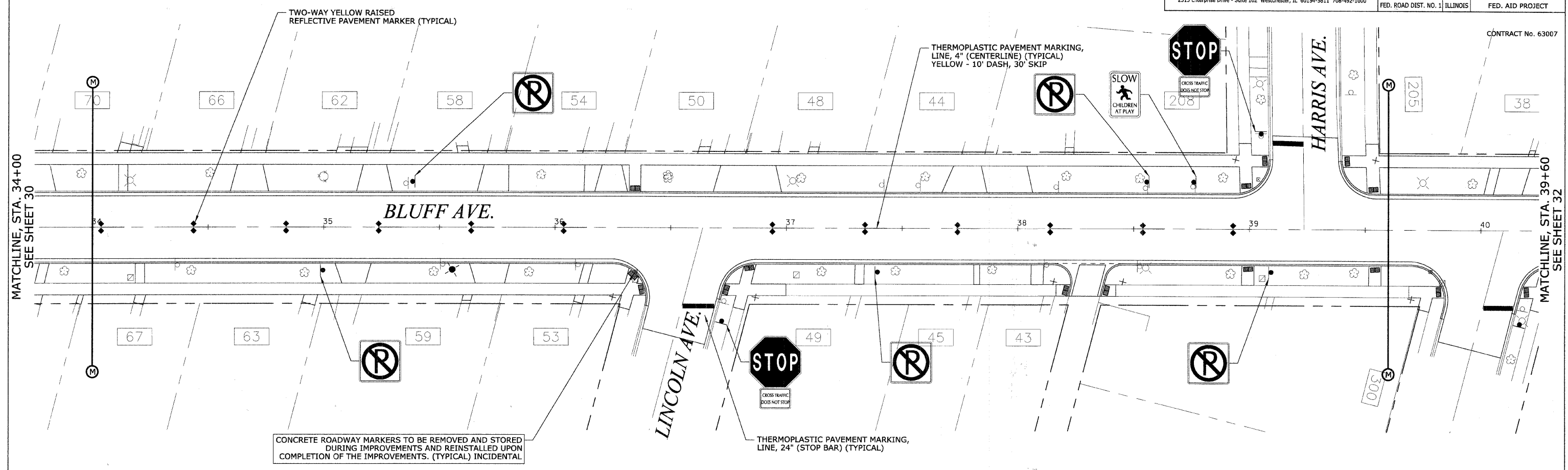




CONTRACT No. 63007



CONCRETE ROADWAY MARKERS TO BE REMOVED AND STORED DURING IMPROVEMENTS AND REINSTALLED UPON COMPLETION OF THE IMPROVEMENTS. (TYPICAL) INCIDENTAL

THERMOPLASTIC PAVEMENT MARKING, LINE, 24" (STOP BAR) (TYPICAL)

THERMOPLASTIC PAVEMENT MARKING, LINE, 4" (CENTERLINE) (TYPICAL) YELLOW - 10' DASH, 30' SKIP

TWO-WAY YELLOW RAISED REFLECTIVE PAVEMENT MARKER (TYPICAL)

DATE	BY	REVISIONS

DATE	BY	REVISIONS

REVISIONS	
NAME	DATE

ILLINOIS DEPARTMENT OF TRANSPORTATION
BLUFF AVENUE IMPROVEMENTS
STAGE 1
PAVEMENT MARKING, SIGNING
AND LANDSCAPING

SCALE: 1" = 20' H (Full Size)
1" = 44' H (Tabloid)

DATE 07/18/2008

DRAWN BY H&A
CHECKED BY PFH