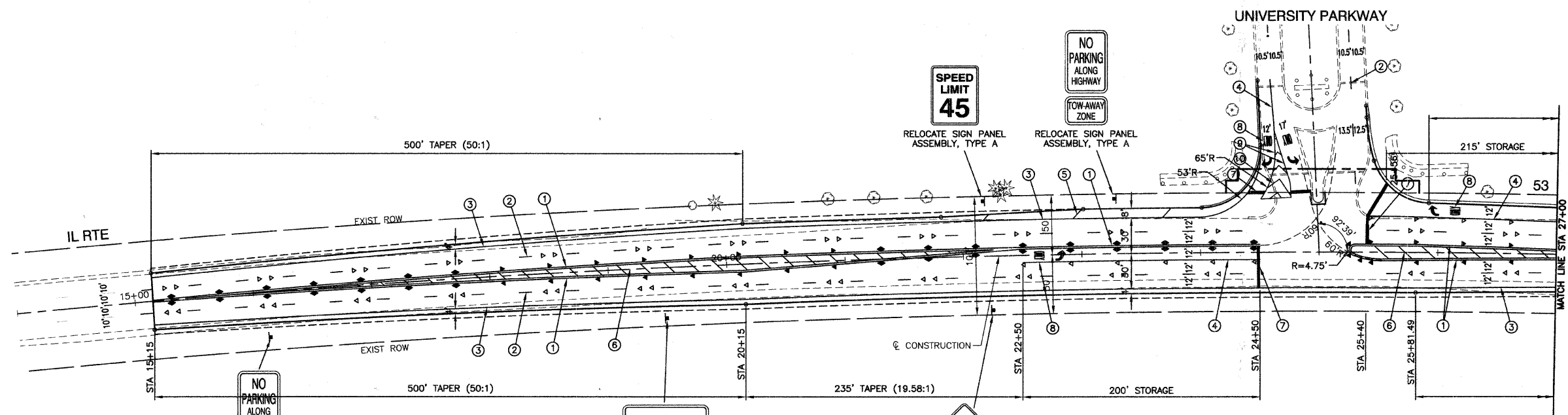
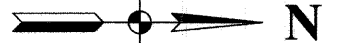


P. A. P. NO.	SECTION	COUNTY	TOTAL SHEETS	SHEET NO.
846	05-00047-00-CH	WILL	036	013
STA. 15+15		TO STA. 30+81.49		
FED. ROAD DIST. NO. 1	ILLINOIS	FED. AID PROJECT		

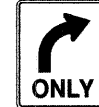
CONTRACT #63033



RELOCATE SIGN PANEL ASSEMBLY, TYPE A



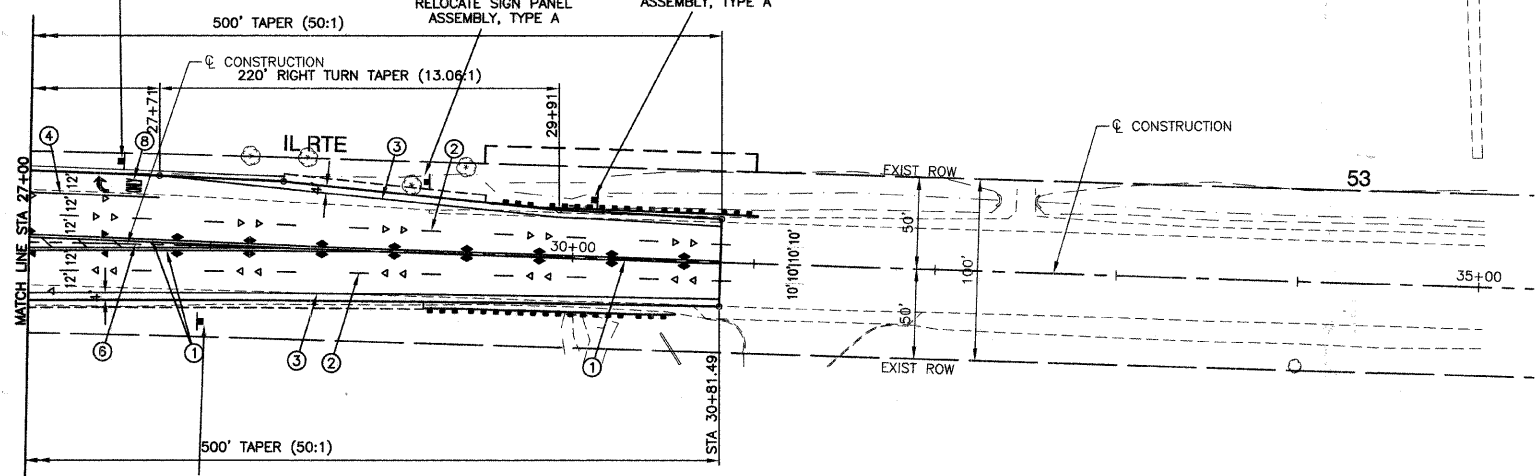
UNIVERSITY PKWY
RELOCATE SIGN PANEL ASSEMBLY, TYPE A



R3-5
30"X36"
STA. 27+69

DO NOT DRIVE ON SHOULDER

UNIVERSITY PKWY
RELOCATE SIGN PANEL ASSEMBLY, TYPE A



RELOCATE SIGN PANEL ASSEMBLY, TYPE A

PAVEMENT MARKING LEGEND

- ① DOUBLE 4" YELLOW CENTERLINE (11" C/C)
- ② 4" WHITE SKIP - DASH LINE (10' LINE - 30' SPACE)
- ③ 4" WHITE EDGE LINE
- ④ 6" WHITE LANE LINE
- ⑤ 12" WHITE DIAGONAL LINE (75' C/C)
- ⑥ 12" YELLOW DIAGONAL LINE (20' C/C)
- ⑦ 24" WHITE STOP BAR
- ⑧ WHITE LETTERS & SYMBOLS - LARGE
- ⑨ 8" WHITE LINE
- ⑩ 12" WHITE DIAGONAL LINE (10' C/C)
- ◀ ONE-WAY AMBER MARKER
40' C/C UNLESS OTHERWISE INDICATED
- ◄ ONE-WAY CRYSTAL MARKER
80' C/C UNLESS OTHERWISE INDICATED
- ◆ TWO-WAY AMBER MARKER
40' C/C UNLESS OTHERWISE INDICATED

NOTES

1. ALL PAVEMENT MARKINGS SHALL BE THERMOPLASTIC UNLESS OTHERWISE NOTED.
2. SPACING OF 12" YELLOW DIAGONALS IN THE MEDIAN NORTH OF UNIVERSITY PARKWAY SHALL BE REDUCED TO ALLOW FOR 5 DIAGONALS.
3. ALL PAVEMENT MARKINGS OVER BRICK PAVERS SHALL BE PAINT

REVISIONS	
NAME	DATE

ILLINOIS DEPARTMENT OF TRANSPORTATION

IL RTE 53 AT UNIVERSITY PARKWAY
INTERSECTION IMPROVEMENT
PAVEMENT MARKING & SIGNING

SCALE: VERT. NA
HORIZ. 1"=50'
DATE: 8-29-08
DRAWN BY: AG/RG
CHECKED BY: WD