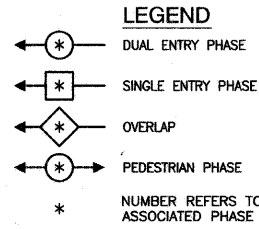
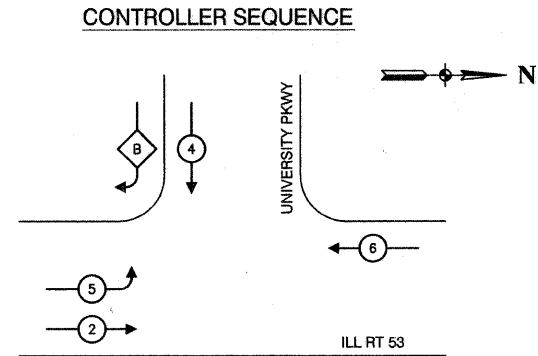


F. A. P. NO.	SECTION	COUNTY	TOTAL SHEETS	SHEET NO.
B46	05-00047-00-CH	WILL.	036	022
STA.	TO STA.			
FED. ROAD DIST. NO. 1	ILLINOIS	FED. AID PROJECT		

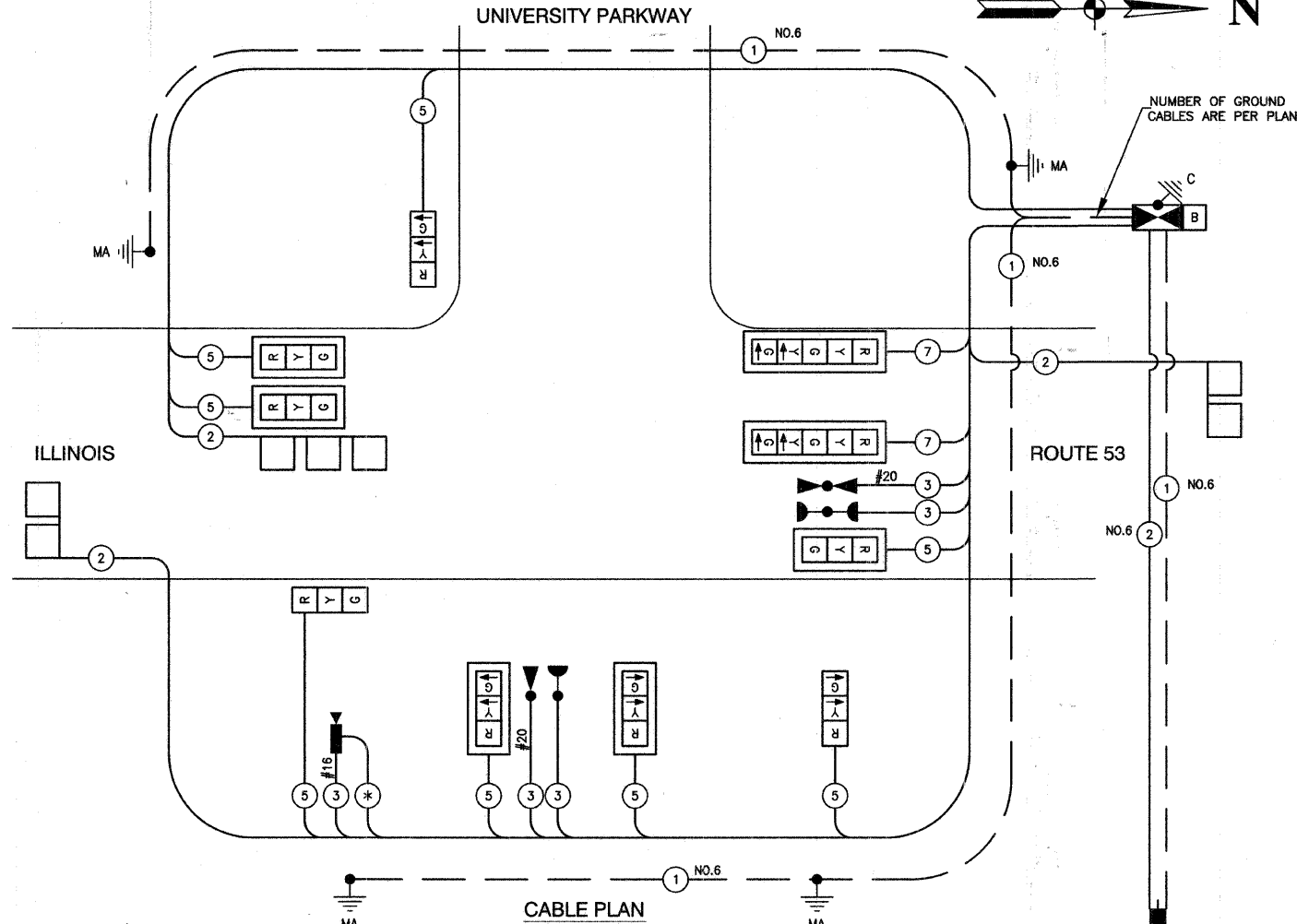
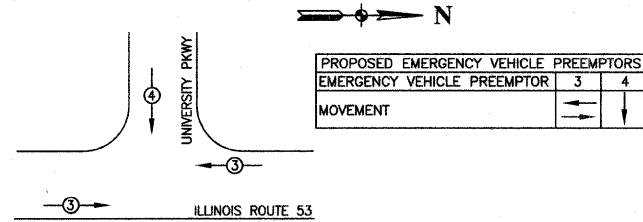
CONTRACT #63033



PHASE DESIGNATION DIAGRAM

OVERLAP LETTER	PERMISSIVE PHASE	PROTECTED PHASE
B	= 4	+ 5

EMERGENCY VEHICLE PREEMPTION SEQUENCE



CABLE PLAN

SCHEDULE OF QUANTITIES

ITEM	UNIT	QUAN
SIGN PANEL, TYPE 1	SQ FT	7.5
SIGN PANEL, TYPE 2	SQ FT	25
CONDUIT IN TRENCH, 2" DIA., GALVANIZED STEEL	FOOT	461
CONDUIT IN TRENCH, 2 1/2" DIA., GALVANIZED STEEL	FOOT	70
CONDUIT IN TRENCH, 3" DIA., GALVANIZED STEEL	FOOT	5
CONDUIT IN TRENCH, 4" DIA., GALVANIZED STEEL	FOOT	132
CONDUIT PUSHED, 2" DIA., GALVANIZED STEEL	FOOT	154
CONDUIT PUSHED, 4" DIA., GALVANIZED STEEL	FOOT	230
HANDHOLE	EACH	2
DOUBLE HANDHOLE	EACH	1
HEAVY-DUTY HANDHOLE	EACH	4
TRENCH AND BACKFILL FOR ELECTRICAL WORK	FOOT	668
FULL-ACTUATED CONTROLLER AND TYPE IV CABINET	EACH	1
ELECTRIC CABLE IN CONDUIT, SIGNAL NO. 14 3C	FOOT	505
ELECTRIC CABLE IN CONDUIT, SIGNAL NO. 14 5C	FOOT	1886
ELECTRIC CABLE IN CONDUIT, SIGNAL NO. 14 7C	FOOT	283
ELECTRIC CABLE IN CONDUIT, LEAD-IN, NO. 14 1 PAIR	FOOT	958
ELECTRIC CABLE IN CONDUIT, SERVICE, NO. 6 2C	FOOT	120
STEEL MAST ARM ASSEMBLY AND POLE, 24 FT.	EACH	1
STEEL MAST ARM ASSEMBLY AND POLE, 28 FT.	EACH	1
STEEL MAST ARM ASSEMBLY AND POLE, 36 FT.	EACH	1
STEEL COMBINATION MAST ARM ASSEMBLY AND POLE, 40 FT.	EACH	1
CONCRETE FOUNDATION, TYPE C	FOOT	4
CONCRETE FOUNDATION, TYPE E 30-INCH DIAMETER	FOOT	45
CONCRETE FOUNDATION, TYPE E 36-INCH DIAMETER	FOOT	15
SIGNAL HEAD, L.E.D., 1-FACE, 3-SECTION, MAST ARM MOUNTED	EACH	5
SIGNAL HEAD, L.E.D., 1-FACE, 3-SECTION, BRACKET MOUNTED	EACH	3
SIGNAL HEAD, L.E.D., 1-FACE, 5-SECTION, MAST ARM MOUNTED	EACH	2
TRAFFIC SIGNAL BACKPLATE, LOUVERED, ALUMINUM	EACH	7
INDUCTIVE LOOP DETECTOR	EACH	3
DETECTOR LOOP, TYPE I	FOOT	292
LIGHT DETECTOR	EACH	2
LIGHT DETECTOR AMPLIFIER	EACH	1
UNINTERRUPTIBLE POWER SUPPLY	EACH	1
ELECTRIC CABLE IN CONDUIT, GROUND, NO. 6, 1C (GREEN)	FOOT	619
SERVICE INSTALLATION - POLE MOUNTED	EACH	1
ELECTRIC CABLE IN CONDUIT, NO. 20, 3C, TWISTED, SHIELDED	FOOT	505
TEMPORARY TRAFFIC SIGNAL INSTALLATION	EACH	1
TEMPORARY TRAFFIC SIGNAL TIMINGS	EACH	1
REMOVE EXISTING TRAFFIC SIGNAL EQUIPMENT	EACH	1
REMOVE EXISTING HANDHOLE	EACH	3
REMOVE EXISTING CONCRETE FOUNDATION	EACH	7
VIDEO VEHICLE DETECTION, 1 CAMERA	EACH	1
ELECTRIC CABLE IN CONDUIT, SIGNAL NO. 16 3/C	FOOT	307
ELECTRIC CABLE IN CONDUIT, COAXIAL CABLE	FOOT	307

EXISTING	PROPOSED	
(C)	(G)	8" TRAFFIC SIGNAL SECTION
(R)	(R)	12" TRAFFIC SIGNAL SECTION
(W)	(W)	12" PEDESTRIAN SIGNAL SECTION
(P)	(P)	12" PEDESTRIAN SIGNAL SECTION
(CAB)	(CAB)	CONTROLLER CABINET
(S)	(S)	SERVICE INSTALLATION
(T)	(T)	TELEPHONE CONNECTION
(M)	(M)	MAGNETIC DETECTOR
(E)	(E)	EMERGENCY VEHICLE LIGHT DETECTOR
(C)	(C)	CONFIRMATION BEACON
(P)	(P)	PUSHBUTTON DETECTOR
(V)	(V)	VEHICLE DETECTOR, INDUCTION LOOP
(2)	(2)	DENOTES NUMBER OF CONDUCTORS. ALL CABLE NO. 14 EXCEPT AS INDICATED. ALL LOOP DETECTOR CABLE TO BE SHIELDED.
(P)	(P)	SIGNAL FACE WITH BACKPLATE "P" INDICATES PROGRAMMED HEAD
(E)	(E)	RAILROAD CONTROL CABINET
(E)	(E)	ILLUMINATED SIGN, FIBER OPTIC "NO LEFT TURN"
(E)	(E)	ILLUMINATED SIGN, FIBER OPTIC "NO RIGHT TURN"
H/C	H/C	GROUND ROD AT HANDHOLE, DOUBLE HANDHOLE, OR CONTROLLER
P/MA	P/MA	GROUND ROD AT POST OR MAST ARM POLE
S	S	GROUND ROD AT ELECTRIC SERVICE INSTALLATION
(1)	(1)	GROUND CABLE IN CONDUIT NO. 6 (GREEN)
(B)	(B)	INTERRUPTIBLE POWER SUPPLY
(*)	(*)	COAXIAL CABLE

I.D.O.T. TRAFFIC SIGNAL INSTALLATION ELECTRICAL SERVICE REQUIREMENTS					TOTAL WATTAGE
TYPE	NO. LAMPS	WATTAGE INCAND.	LED	% OPERATION	
SIGNAL (RED)	10	135	17	0.50	85.00
(YELLOW)	10	135	25	0.25	62.50
(GREEN)	10	135	15	0.25	37.50
ARROW	4	135	12	0.10	4.80
PED. SIGNAL	-	90	25	1.00	-
CONTROLLER	1	100	100	1.00	100.00
ILLUM. SIGN	-	84	-	0.05	-
FLASHER	-	-	-	0.50	-
TOTAL =					289.80

FOUNDATION (DEPTH)	FT. (m)	CABLE SLACK	FT. (m)	VERTICAL	FT. (m)
TYPE A - POST	4 (1.2)	HANDHOLE	6.5 (2.0)	ALL FOUNDATIONS	3.5 (1.0)
D - CONTROLLER	4 (1.2)	DOUBLE HANDHOLE	13 (4.0)	MAST ARM (L) POLE	20'+L-2=
E - M. ARM POLE	-	SIGNAL POST	2 (1.0)	(8m+L-0.8m)=	-
30" (750mm)	15 (4.6)	CONTROLLER CAB.	1 (0.5)	BRACKET MOUNTED	13 (4.0)
30" (750mm)	15 (4.6)	FIBER OPTIC	13 (4.0)	PED. PUSHBUTTON	4 (1.2)
36" (900mm)	15 (4.6)	ELECTRIC SERVICE	1 (0.5)	ELECTRIC SERVICE	13.5 (4.1)
		GROUND CABLE	1 (0.5)	SERVICE TO GROUND	13.5 (4.1)
				POST MOUNTED	6 (1.8)

REVISIONS	
NAME	DATE

ILLINOIS DEPARTMENT OF TRANSPORTATION

IL RTE 53 AT UNIVERSITY PARKWAY CABLE PLAN AND PHASE DESIGNATION DIAGRAM

SCALE: VERT. NA
HORIZ. 1"=20'

DATE 8-29-08

DRAWN BY BK
CHECKED BY WD