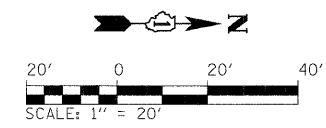
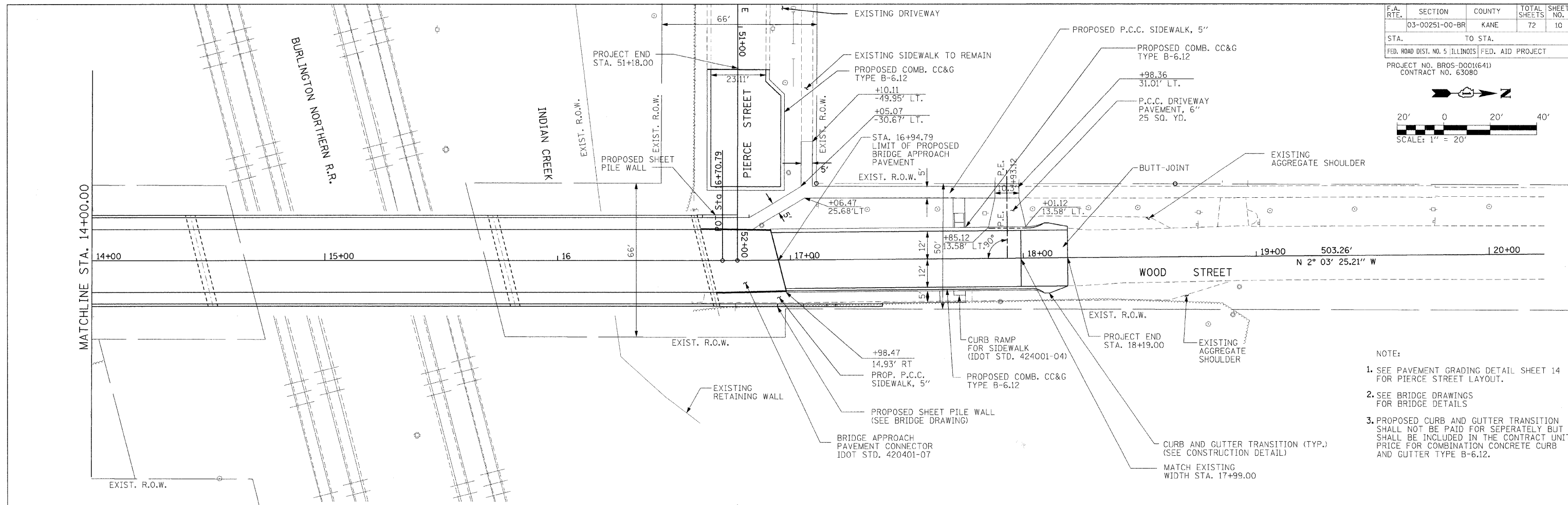


F.A. RTE.	SECTION	COUNTY	TOTAL SHEETS	SHEET NO.
03-00251-00-BR		KANE	72	10
STA.	TO STA.			
FED. ROAD DIST. NO. 5 ILLINOIS	FED. AID PROJECT			
PROJECT NO. BROS-D001(641) CONTRACT NO. 63080				

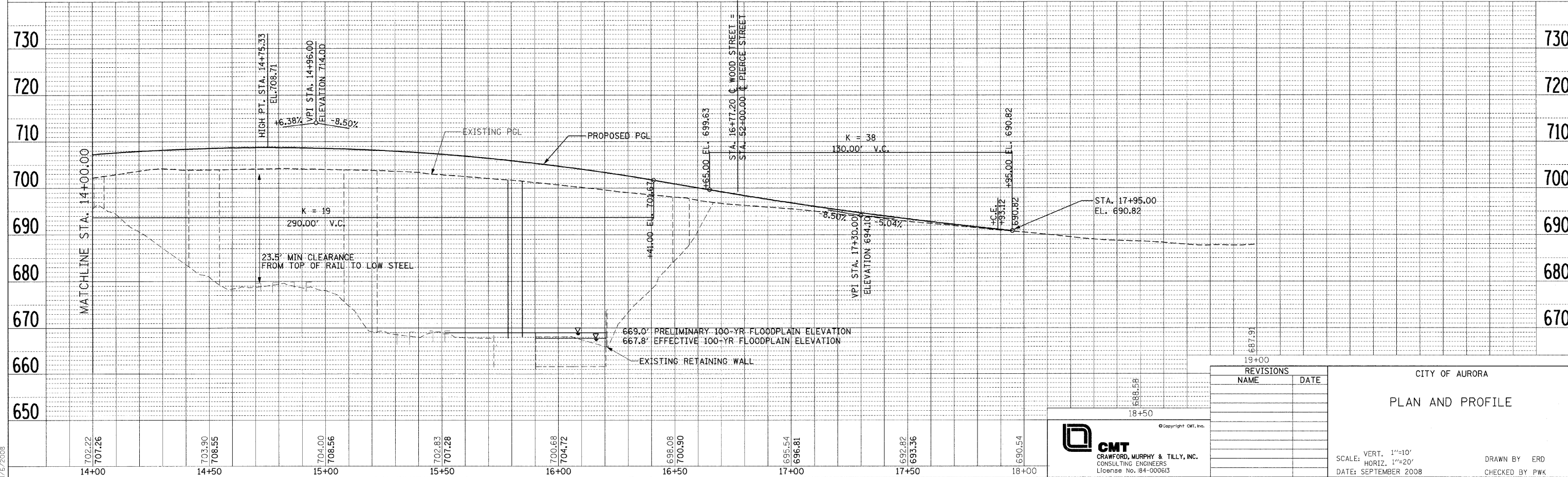


PLAN	REVISIONS	DATE
NO.	BY	
NO.	BY	
NO.	BY	
NO.	BY	



- NOTE:
- SEE PAVEMENT GRADING DETAIL SHEET 14 FOR PIERCE STREET LAYOUT.
 - SEE BRIDGE DRAWINGS FOR BRIDGE DETAILS
 - PROPOSED CURB AND GUTTER TRANSITION SHALL NOT BE PAID FOR SEPARATELY BUT SHALL BE INCLUDED IN THE CONTRACT UNIT PRICE FOR COMBINATION CONCRETE CURB AND GUTTER TYPE B-6.12.

PROFILE	REVISIONS	DATE
NO.	BY	
NO.	BY	
NO.	BY	



REVISIONS	
NAME	DATE

CITY OF AURORA
PLAN AND PROFILE
SCALE: VERT. 1"=10'
HORIZ. 1"=20'
DATE: SEPTEMBER 2008
DRAWN BY ERD
CHECKED BY PWK

CMT
CRAWFORD, MURPHY & TILLY, INC.
CONSULTING ENGINEERS
License No. 04-000613

L:\AURORA\042908-06\04-St\Draw\Sheets\plan-pro-1102.dgn
11/6/2008