

Bench Mark: (C.P.#1) Chiseled "x" S.E. on Bridge deck @ approximate Sta. 14+11.44
 Northing: 1857789.26 Easting: 994563.952, Elev.703.18 (C.P.#2) Found Mac Nail @
 approximate Sta. 16+88.25 in center of Wood and Pierce. Northing: 1857923.270,
 Easting: 994563.561, Elev. 696.88.

Existing Structure: S.N. 045-6007 was originally constructed in 1925 and later
 rehabbed in 1973. The existing Structure is a Four span Steel Girder Bridge with
 Concrete Deck on Stay-in-place Corrugated Metal Forms. The Super Structure is
 carried by Concrete Piers and Pile Bent Abutments on Timber Piles. The Total
 Length of the Bridge 255 ft. and the Deck width is 40.2 ft. Bridge is closed
 to traffic.

Proposed Improvements: Existing Bridge to be removed & replaced. No stage
 construction required.

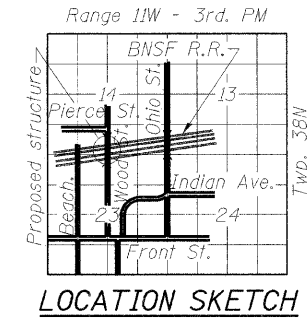
No Salvage.

STATE OF ILLINOIS
 DEPARTMENT OF TRANSPORTATION

ROUTE NO.	SECTION	COUNTY	TOTAL SHEETS	SHEET NO.
		KANE	72	20
FED. ROAD DIST. NO. 7	ILLINOIS	FED. AID PROJECT		

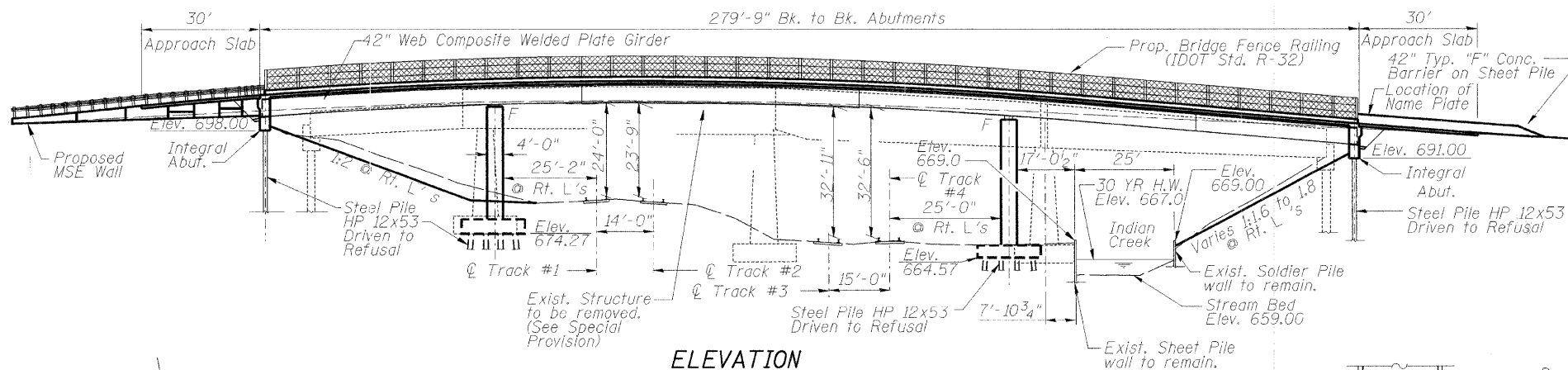
SHEET NO. S-1
 SHEETS 33

Project No. BROS-D001641
 Contract No. 63080

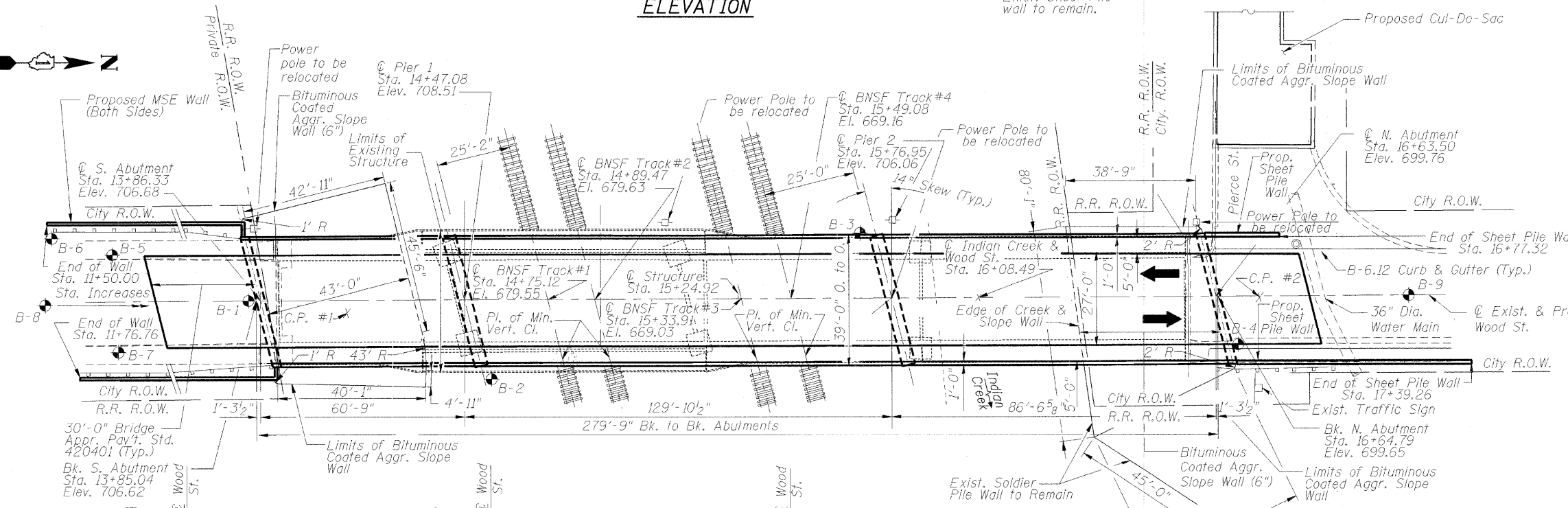


STATION 15+24.92
 BUILT 2009 BY
 STATE OF ILLINOIS
 LOADING HL93
 STRUCTURE NO.
 045-6022

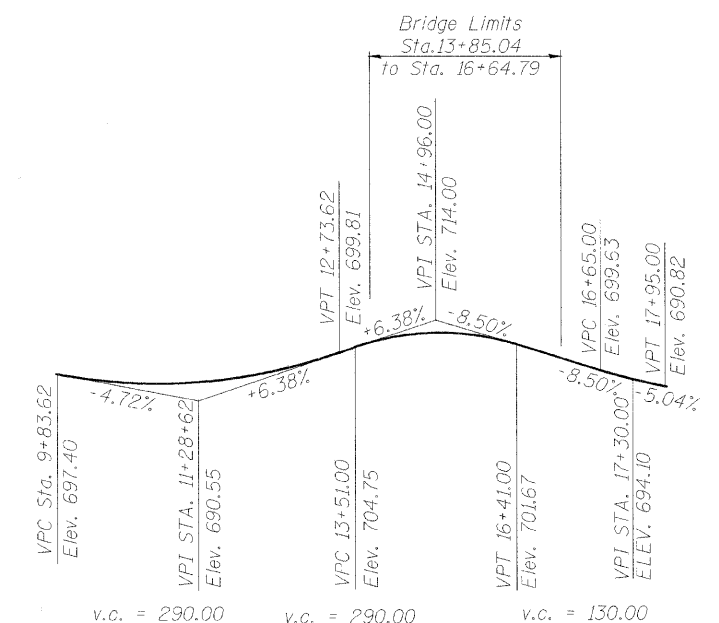
NAME PLATE
 See Std. 515001-03



ELEVATION



PLAN



PROFILE GRADE
 (along Q Rdwy. Wood Street)

I certify that to the best of my knowledge, information and belief, this bridge design is structurally adequate for the design loading shown on the plans. The design is an economical one for the style of structure and complies with requirements of the current "AASHTO Standard Specifications for Highway Bridges."



Ahmad T. Idriss, P.E., S.E.
 Illinois Licensed Structural Engineer
 License Number: 081-005753
 Expiration Date: November 30, 2010

Sta. 9+00.00 Elev. 679.49	Sta. 10+00.00 Elev. 679.55	Sta. 11+00.00 Elev. 679.91	Sta. 12+00.00 Elev. 679.83	Sta. 13+00.00 Elev. 679.34	Sta. 14+00.00 Elev. 679.99	Sta. 15+00.00 Elev. 679.63	Sta. 16+00.00 Elev. 679.66	Sta. 17+00.00 Elev. 679.80	Sta. 18+00.00 Elev. 679.69	Sta. 19+00.00 Elev. 669.26	Sta. 20+00.00 Elev. 669.34	Sta. 21+00.00 Elev. 669.19	Sta. 22+00.00 Elev. 669.03	Sta. 23+00.00 Elev. 669.52	Sta. 24+00.00 Elev. 668.89
------------------------------	-------------------------------	-------------------------------	-------------------------------	-------------------------------	-------------------------------	-------------------------------	-------------------------------	-------------------------------	-------------------------------	-------------------------------	-------------------------------	-------------------------------	-------------------------------	-------------------------------	-------------------------------

PROFILE GRADE (TOR BNSF Track # 1) (Looking North)	PROFILE GRADE (TOR BNSF Track # 2) (Looking North)	PROFILE GRADE (TOR BNSF Track # 3) (Looking North)	PROFILE GRADE (TOR BNSF Track # 4) (Looking North)
--	--	--	--

DESIGN SPECIFICATIONS
 2004 AASHTO LRFD Bridge Design Specifications,
 4th. Edition, 2007

DESIGN STRESSES
 FIELD UNITS
 $f_c = 3,500$ psi
 $f_y = 60,000$ psi (reinforcement)
 $f_y = 50,000$ psi (AASHTO M270 Grade 50)

SEISMIC DATA
 Seismic Performance Zone (SPZ) = 1
 Bedrock Acceleration Coefficient (A) = 0.04 g
 Site Coefficient (S) = 1.0

LOADING HL-93
 Allow 50#/sq. ft. for Future Wearing Surface.

Notes
 See civil sheets for utility information.

DESIGNED	200
CHECKED	EXAMINED
DRAWN	PASSED
CHECKED	

REVISIONS	
NAME	DATE

ILLINOIS DEPARTMENT OF TRANSPORTATION
 GENERAL PLAN AND ELEVATION
 WOOD ST. BRIDGE OVER B.N.S.F. R.R.
 AND INDIAN CREEK
 SECTION 03-00251-00-BR STATION 15+24.92
 KANE COUNTY STRUCTURE NO. 045-6022

SCALE: DATE: SEPTEMBER 2008
 DRAWN BY: MCC
 CHECKED BY: ATI

