

STATE OF ILLINOIS
DEPARTMENT OF TRANSPORTATION

ROUTE NO.	SECTION	COUNTY	TOTAL SHEETS	SHEET NO.
		KANE	72	27
FED. ROAD DIST. NO. 7	ILLINOIS	FED. AID PROJECT-		

SHEET NO. S-8

SHEETS 33

Project No. BR05-D001(641)
Contract No. 63080

WEST CURB LINE

Location	Station	Offset (ft)	Theoretical Grade Elevations
End S. Appr. Pav't	13+51.80	-13.000	704.523
A	13+61.76	-13.166	705.132
B	13+71.72	-13.333	705.689
Bk. S. Abut.	13+81.67	-13.500	706.196

WEST EDGE OF PAVEMENT

Location	Station	Offset (ft)	Theoretical Grade Elevations
End S. Appr. Pav't	13+52.05	-12.000	704.577
A	13+62.05	-12.000	705.184
B	13+72.05	-12.000	705.739
Bk. S. Abut.	13+82.05	-12.000	706.244

CL WOOD STREET & PGL

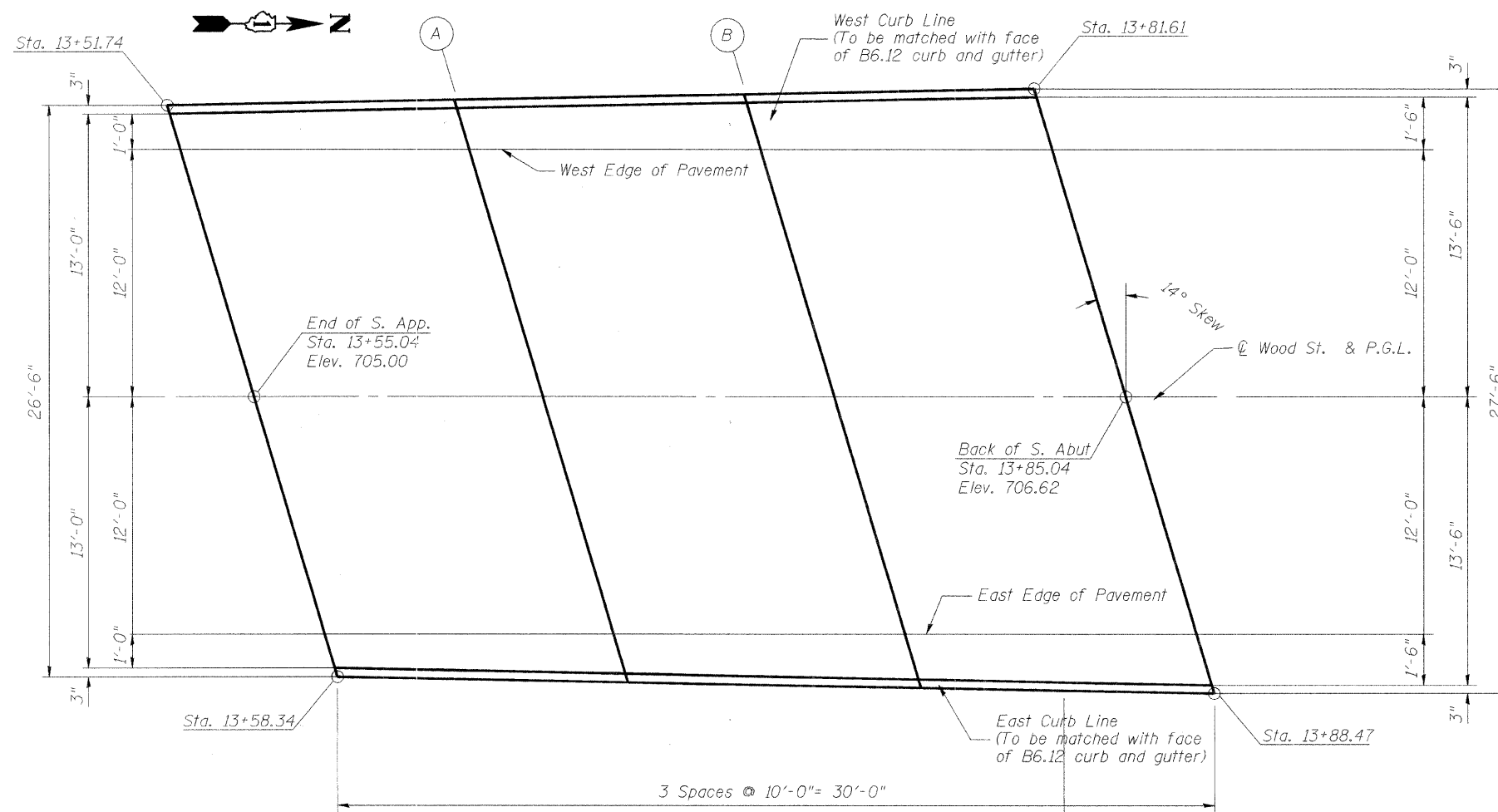
Location	Station	Offset (ft)	Theoretical Grade Elevations
End S. Appr. Pav't	13+55.04	0.000	705.004
A	13+65.04	0.000	705.595
B	13+75.04	0.000	706.135
Bk. S. Abut.	13+85.04	0.000	706.624

EAST EDGE OF PAVEMENT

Location	Station	Offset (ft)	Theoretical Grade Elevations
End S. Appr. Pav't	13+58.03	12.000	704.946
A	13+68.03	12.000	705.522
B	13+78.03	12.000	706.047
Bk. S. Abut.	13+88.03	12.000	706.521

EAST CURB LINE

Location	Station	Offset (ft)	Theoretical Grade Elevations
End S. Appr. Pav't	13+58.28	13.000	704.938
A	13+68.32	13.166	705.513
B	13+78.37	13.333	706.036
Bk. S. Abut.	13+88.41	13.500	706.508



SOUTH APPROACH PAVEMENT - PLAN

DESIGNED	200
CHECKED	EXAMINED
DRAWN	PASSED
CHECKED	



REVISIONS	
NAME	DATE

ILLINOIS DEPARTMENT OF TRANSPORTATION
SOUTH APPROACH PAVEMENT ELEVATIONS
WOOD ST. BRIDGE OVER B.N.S.F. R.R.
AND INDIAN CREEK
SECTION - BR STATION 15+24.92
KANE COUNTY STRUCTURE NO. 045-6022

SCALE:
DATE: SEPTEMBER 2008

DRAWN BY: ERD
CHECKED BY: ATI

WOOD STREET

SEC