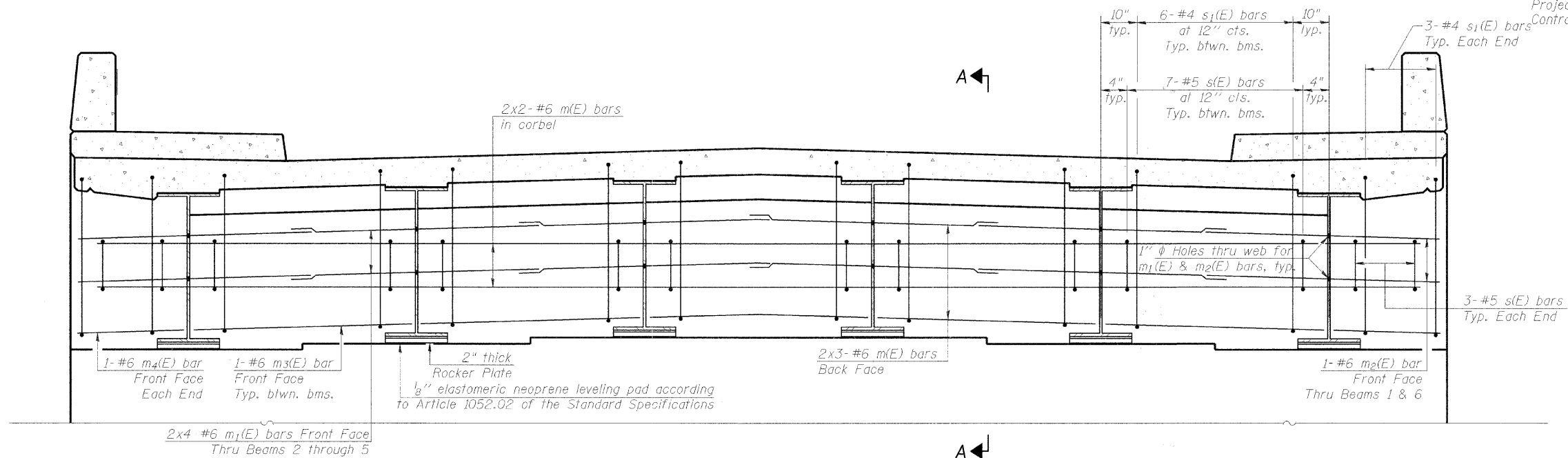


STATE OF ILLINOIS
DEPARTMENT OF TRANSPORTATION

ROUTE NO.	SECTION	COUNTY	TOTAL SHEETS	SHEET NO.
		KANE	72	32
FED. ROAD DIST. NO.	ILLINOIS	FED. AID PROJECT		

SHEET NO. S-13
SHEETS 33

Project No. BR05-D001641
Contract No. 63080

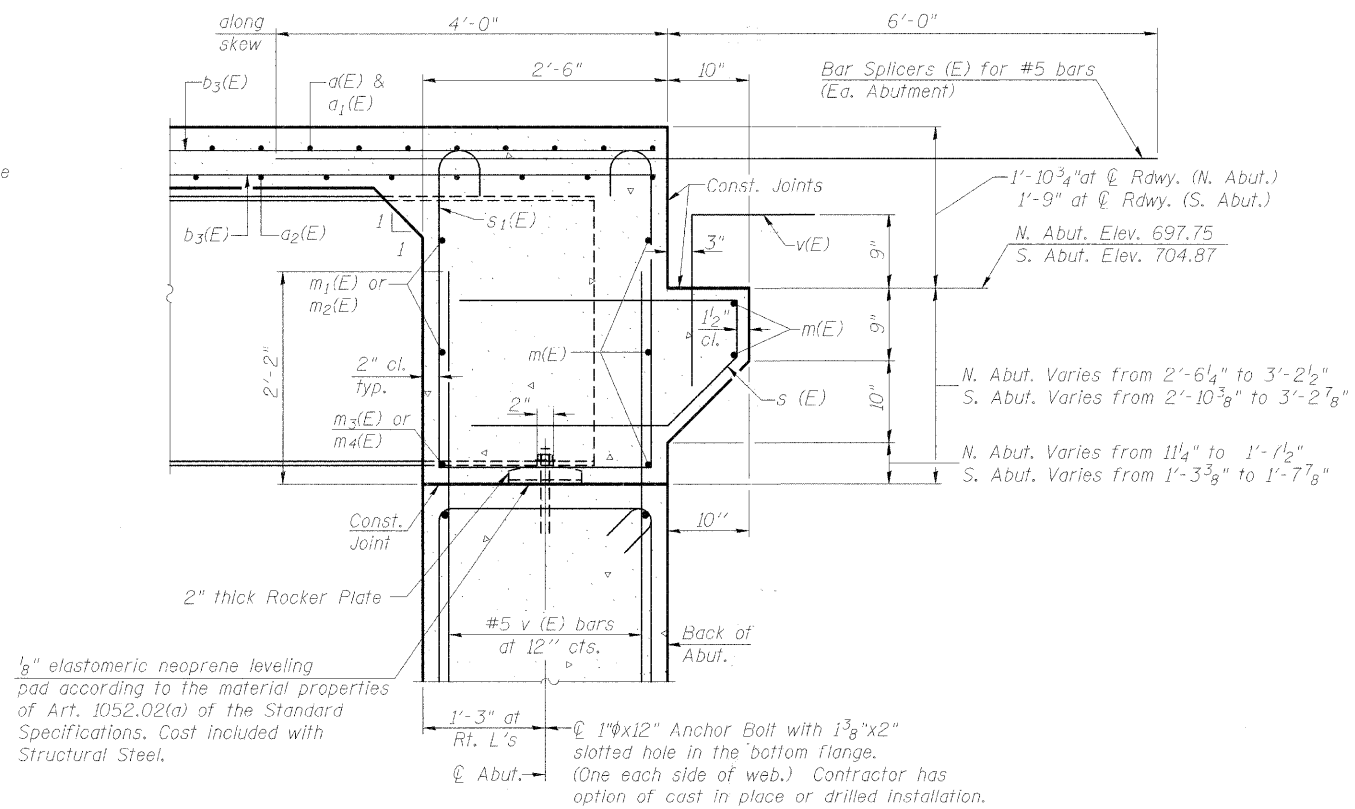


DIAPHRAGM ELEVATION AT ABUTMENT

Notes:
Reinforcement bars in diaphragm are billed with superstructure on sheet 12 of 32.
Concrete in diaphragm is included with Concrete Superstructure on sheet 12 of 32.
For details of bars s(E) & s₁(E) see sheet 12 of 32.
The s(E) and s₁(E) bars shall be placed parallel to the beams. Spacing for these bars shall be at right angles to the beams.
For anchor bolt notes see sheet S-20.
For location of holes thru web, see sheet S-20.

MIN. BAR LAP

#6 bar = 2'-7"



SECTION A-A

Dimensions at right angles to abutment, except as shown.

DESIGNED	200
CHECKED	EXAMINED
DRAWN	PASSED
CHECKED	ENGINEER OF BRIDGES AND STRUCTURES

SI-DS1 9-3-07

CMT
CRAWFORD MURPHY & TILLY, INC.
CONSULTING ENGINEERS
SPRINGFIELD, IL ■ AURORA, IL ■ ST. LOUIS, MO
ROCKFORD, IL ■ PEORIA, IL ■ CHICAGO, IL

REVISIONS	
NAME	DATE

ILLINOIS DEPARTMENT OF TRANSPORTATION
BACKWALL DETAILS
WOOD ST. BRIDGE OVER B.N.S.F. R.R.
AND INDIAN CREEK
SECTION -BR STATION 15+24.92
KANE COUNTY STRUCTURE NO. 045-6022

SCALE:
DATE: SEPTEMBER 2008

DRAWN BY: MCC
CHECKED BY: ATI

WOOD STREET

SEC