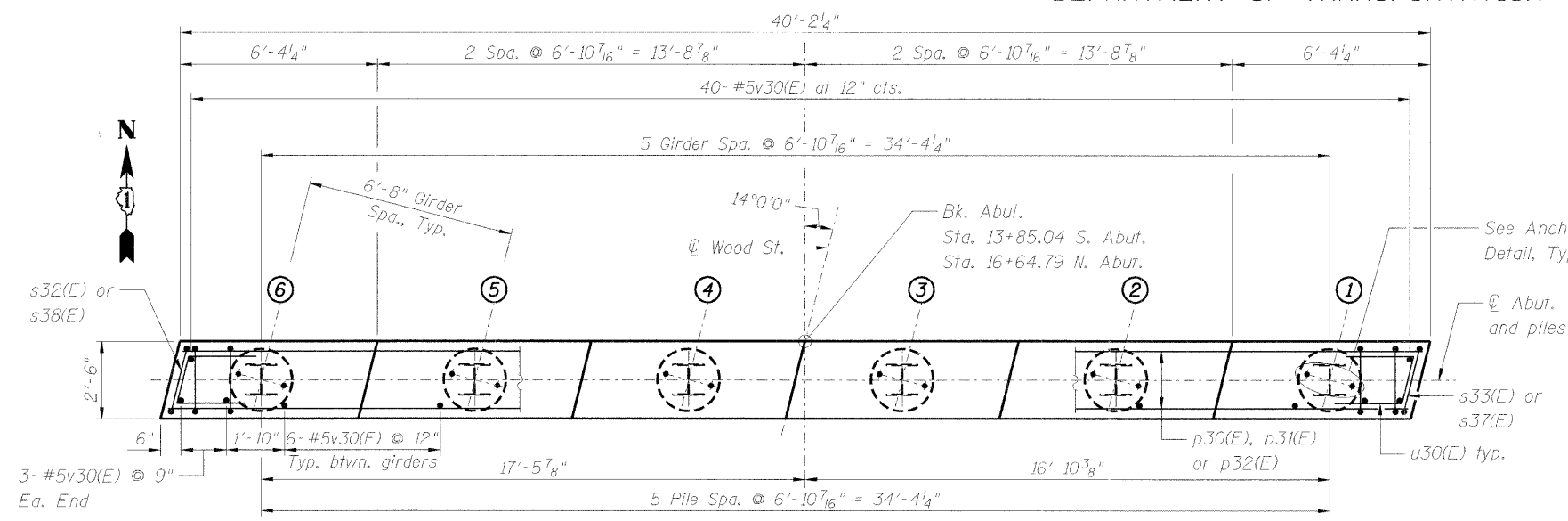


STATE OF ILLINOIS
DEPARTMENT OF TRANSPORTATION

ROUTE NO.	SECTION	COUNTY	TOTAL SHEETS	SHEET NO.
		KANE	72	40
FED. ROAD DIST. NO. 7		ALTERNATE	FED. AID PROJECT	

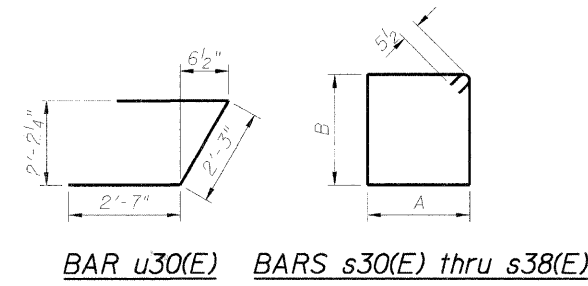
SHEET NO. S-21
SHEETS 33

Project No. BR05-D001(641)
Contract No. 63080



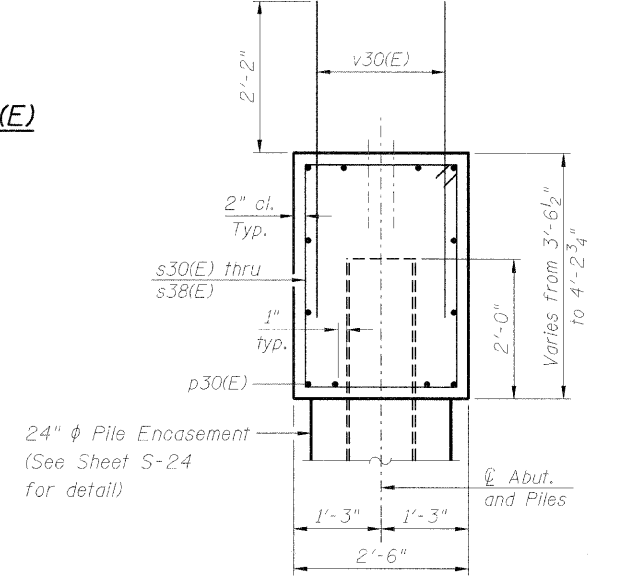
PLAN

(S. Abut. Shown, N. Abut. Opp. Hand)



A & B DIMENSIONS

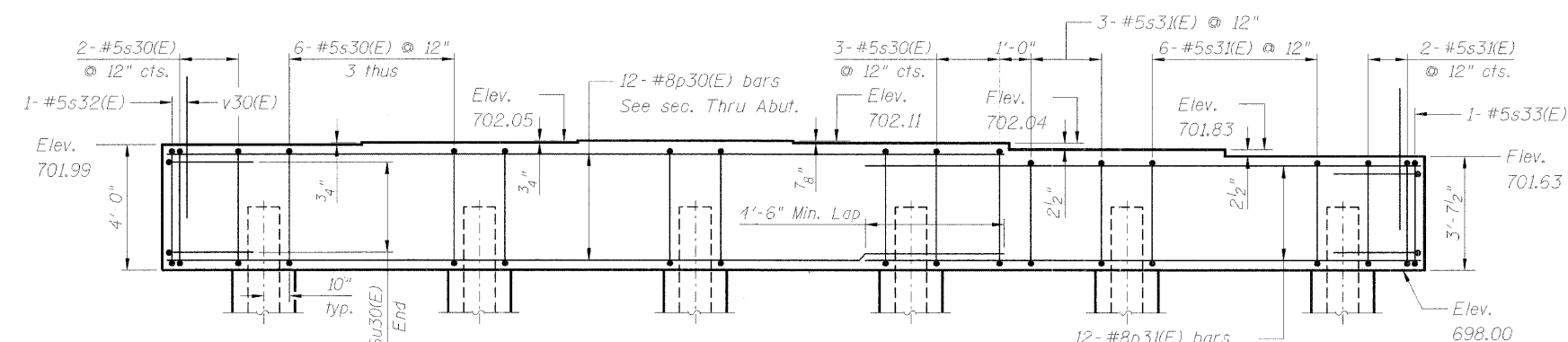
Bar	A	B
s30(E)	2'-2"	3'-8"
s31(E)	2'-2"	3'-3"
s32(E)	2'-3"	3'-8"
s33(E)	2'-3"	3'-3"
s34(E)	2'-2"	3'-10"
s35(E)	2'-2"	3'-5"
s36(E)	2'-2"	3'-2"
s37(E)	2'-3"	3'-10"
s38(E)	2'-3"	3'-2"



SECTION THRU ABUT.

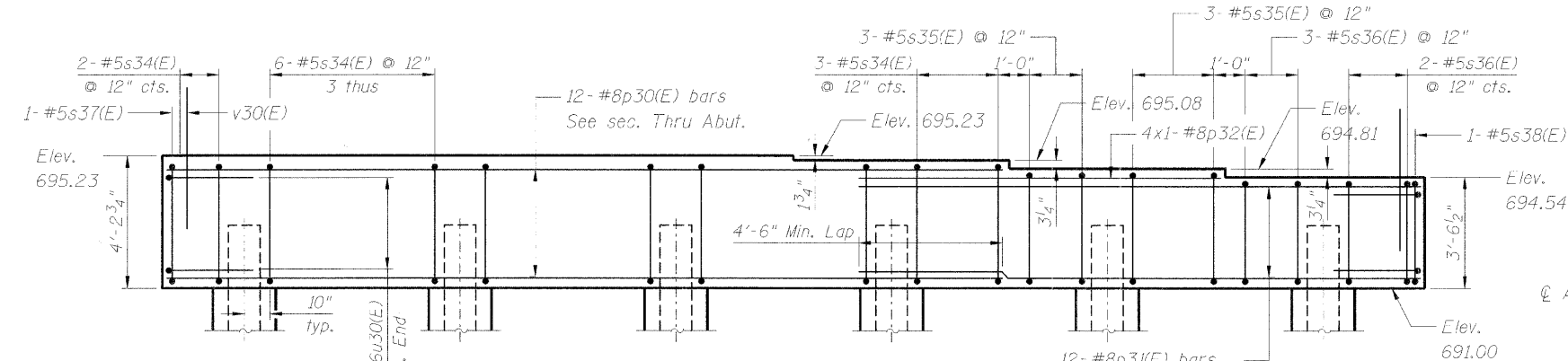
PILE DATA

Type: HP 12x53
Nominal Required Bearing: 418.5 k
Factored Resistance Available: 139.5 k
Est. Length: 69 ft (S. Abut.), 62 ft (N. Abut.)
No. Production Piles: 6 Including 1 Test Pile (S. Abut.)
6 Including 1 Test Pile (N. Abut.)



ELEVATION - S. ABUTMENT

(Looking South)



ELEVATION - N. ABUTMENT

(Looking North)

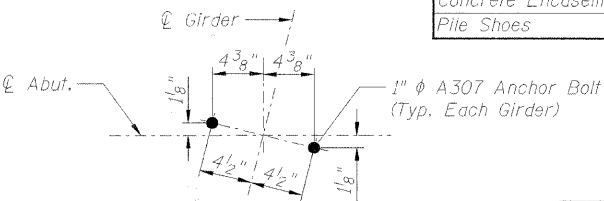
BILL OF MATERIAL
(South Abutment)

Bar	No.	Size	Length	Shape
p30(E)	12	#8	26'-7"	—
p31(E)	12	#8	17'-9"	—
s30(E)	23	#5	12'-7"	□
s31(E)	11	#5	11'-9"	□
s32(E)	1	#5	12'-9"	□
s33(E)	1	#5	11'-11"	□
u30(E)	8	#6	7'-5"	┘
v30(E)	76	#5	4'-4"	—
Structure Excavation		Cu. Yd.	42.7	
Concrete Structures		Cu. Yd.	14.7	
Reinforcement Bars, Epoxy Coated		Pound	2,310	
Furnishing Steel Piles HP12X53		Foot	345	
Driving Piles HP12X53		Foot	345	
Test Pile Steel HP12X53		Each	1	
Concrete Encasement		Cu. Yd.	2.1	
Pile Shoes		Each	6	

BILL OF MATERIAL
(North Abutment)

Bar	No.	Size	Length	Shape
p30(E)	12	#8	26'-7"	—
p31(E)	12	#8	17'-9"	—
p32(E)	4	#8	11'-4"	—
s34(E)	23	#5	12'-11"	□
s35(E)	6	#5	12'-1"	□
s36(E)	5	#5	11'-7"	□
s37(E)	1	#5	13'-1"	□
s38(E)	1	#5	11'-9"	□
u30(E)	8	#6	7'-5"	┘
v30(E)	76	#5	4'-4"	—
Structure Excavation		Cu. Yd.	45.1	
Concrete Structures		Cu. Yd.	15.0	
Reinforcement Bars, Epoxy Coated		Pound	2,450	
Furnishing Steel Piles HP12X53		Foot	310	
Driving Piles HP12X53		Foot	310	
Test Pile Steel HP12X53		Each	1	
Concrete Encasement		Cu. Yd.	2.1	
Pile Shoes		Each	6	

For details of Bar Splicers, see sheet S-15 of 32.
For details of piles and Concrete Encasement, see sheet S-24 of 32.
For General Notes, see Sheet S-2 of S-32.

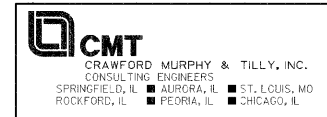


ANCHOR BOLT INSTALLATION DETAIL

DESIGNED	200
CHECKED	EXAMINED
DRAWN	PASSED
CHECKED	ENGINEER OF BRIDGE DESIGN
	ENGINEER OF BRIDGES AND STRUCTURES

REVISIONS	
NAME	DATE

ILLINOIS DEPARTMENT OF TRANSPORTATION
ABUTMENT DETAILS
WOOD ST. BRIDGE OVER B.N.S.F. R.R.
AND INDIAN CREEK
SECTION - BR STATION 15+24.92
KANE COUNTY STRUCTURE NO. 045-6022



SCALE: DATE: SEPTEMBER 2008 DRAWN BY: PA CHECKED BY: ATI