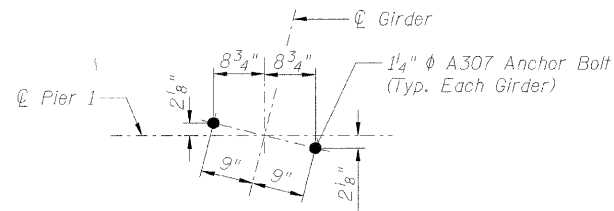


STATE OF ILLINOIS  
DEPARTMENT OF TRANSPORTATION

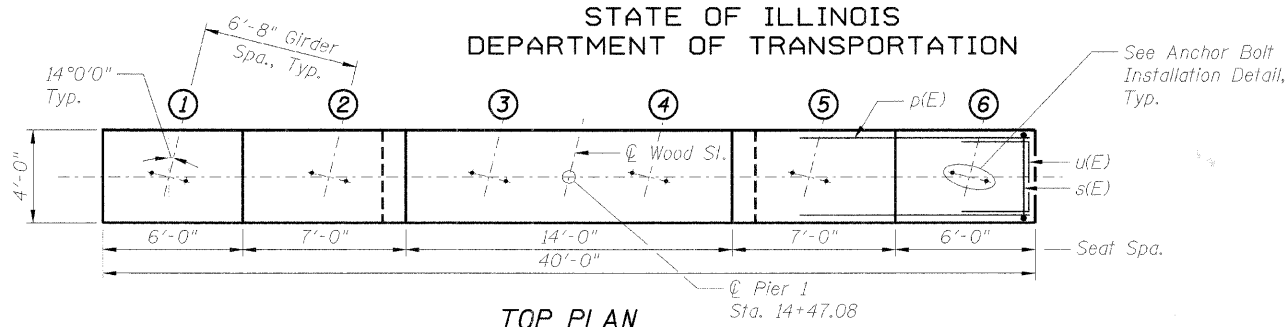
|                       |         |                            |           |       |
|-----------------------|---------|----------------------------|-----------|-------|
| ROUTE NO.             | SECTION | COUNTY                     | SHEET NO. | SHEET |
|                       |         | KANE                       | 72        | 41    |
| FED. ROAD DIST. NO. 7 |         | ILLINOIS FED. ROAD PROJECT |           |       |

SHEET NO. 5-22  
SHEETS 33

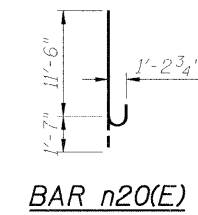
Project No. BR05-D001641  
Contract No. 63080



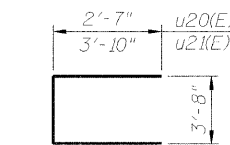
ANCHOR BOLT INSTALLATION DETAIL



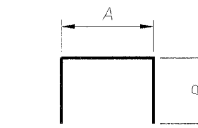
TOP PLAN



BAR n20(E)

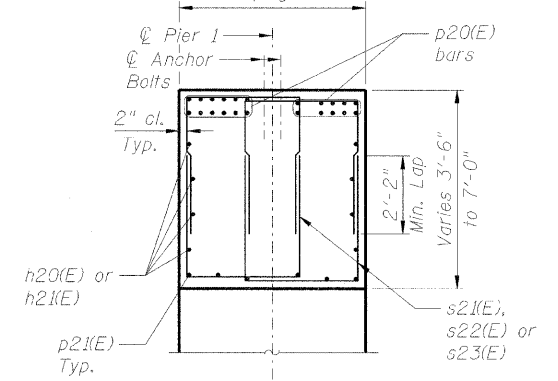


BARS u20(E)  
and u21(E)



BARS s20(E)  
thru s23(E)  
A & B DIMENSIONS

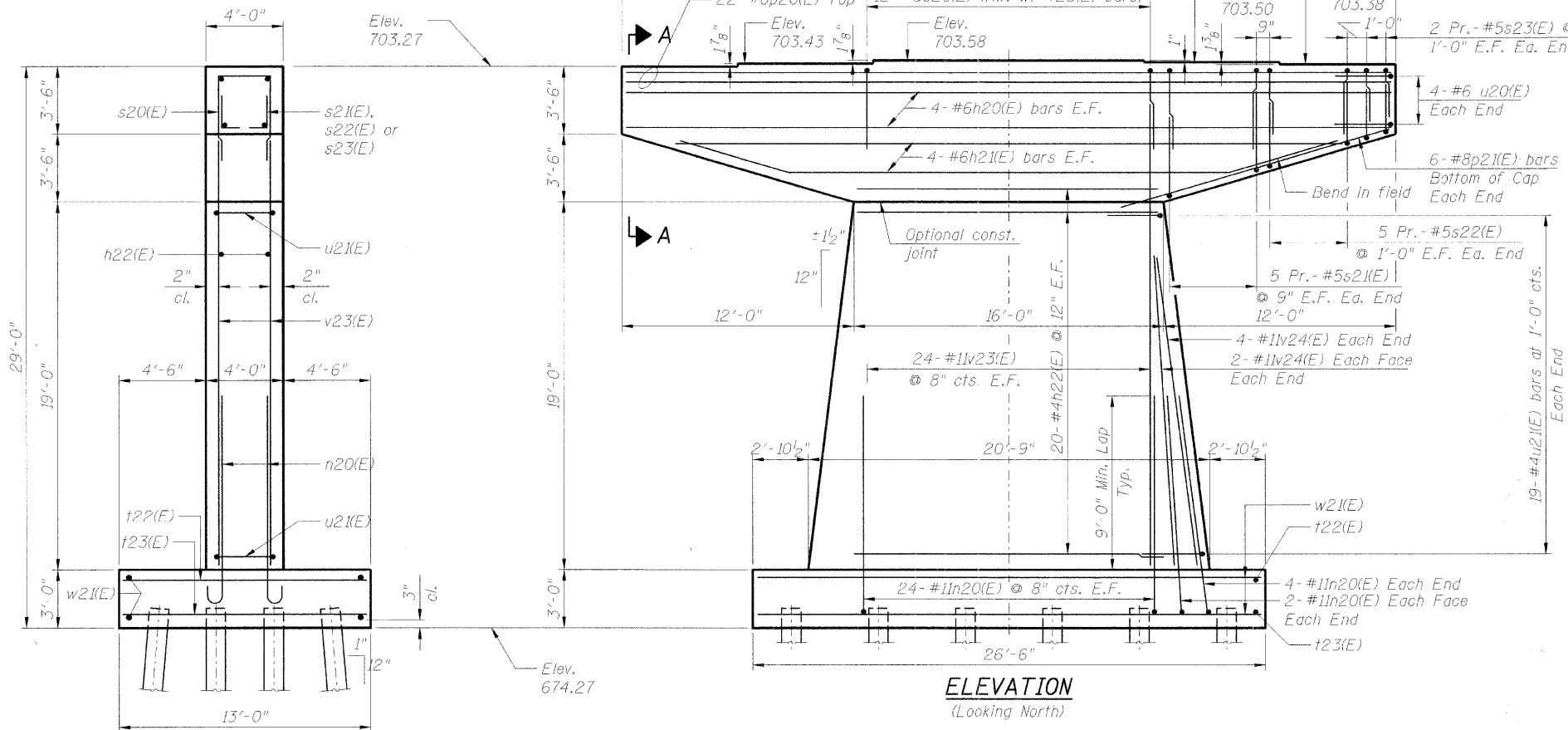
| Bar    | A     | B      |
|--------|-------|--------|
| s20(E) | 3'-8" | 3'-10" |
| s21(E) | 2'-5" | 4'-3"  |
| s22(E) | 2'-5" | 3'-6"  |
| s23(E) | 2'-5" | 2'-10" |



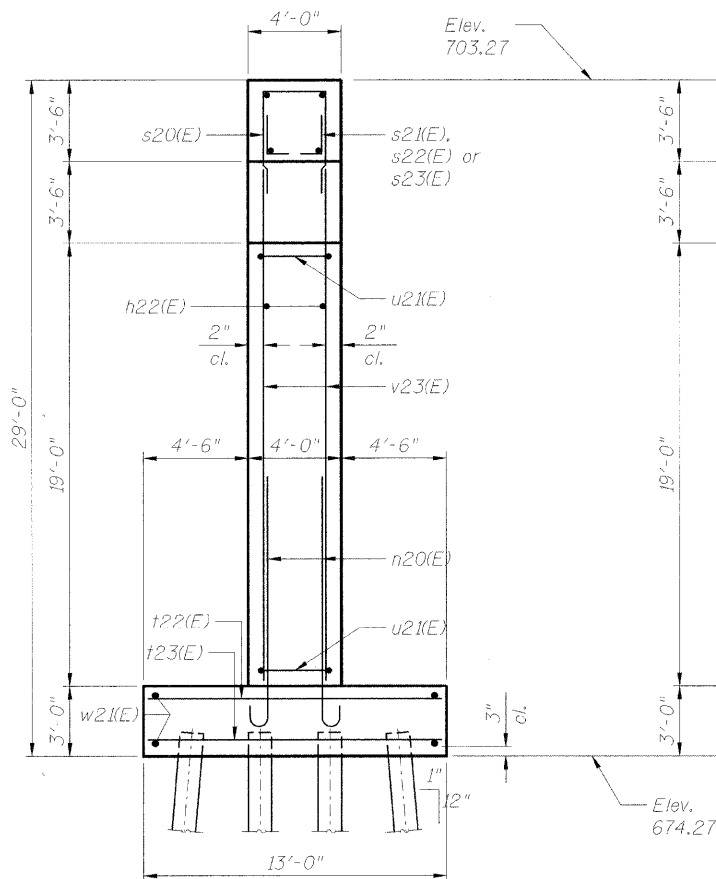
SECTION A-A

BILL OF MATERIAL

| Bar                              | No. | Size    | Length  | Shape |
|----------------------------------|-----|---------|---------|-------|
| h20(E)                           | 8   | #6      | 39'-8"  | U     |
| h21(E)                           | 8   | #6      | 34'-5"  | U     |
| h22(E)                           | 40  | #4      | 15'-8"  | U     |
| n20(E)                           | 64  | #11     | 14'-4"  | C     |
| p20(E)                           | 22  | #8      | 39'-8"  | U     |
| p21(E)                           | 12  | #8      | 16'-2"  | U     |
| s20(E)                           | 12  | #5      | 11'-4"  | U     |
| s21(E)                           | 40  | #5      | 10'-11" | U     |
| s22(E)                           | 40  | #5      | 9'-5"   | U     |
| s23(E)                           | 16  | #5      | 8'-1"   | U     |
| t22(E)                           | 27  | #6      | 12'-8"  | U     |
| t23(E)                           | 29  | #8      | 12'-8"  | U     |
| u20(E)                           | 8   | #6      | 8'-10"  | U     |
| u21(E)                           | 38  | #4      | 11'-4"  | U     |
| v22(E)                           | 48  | #11     | 24'-3"  | U     |
| v23(E)                           | 16  | #11     | 16'-0"  | U     |
| w21(E)                           | 37  | #6      | 26'-2"  | U     |
| Structure Excavation             |     | Cu. Yd. | 72.9    |       |
| Concrete Structures              |     | Cu. Yd. | 139.4   |       |
| Reinforcement Bars, Epoxy Coated |     | Pound   | 21,040  |       |
| Furnishing Steel Piles HP12X53   |     | Foot    | 1,035   |       |
| Driving Piles                    |     | Foot    | 1,035   |       |
| Test Pile Steel HP12X53          |     | Each    | 1       |       |
| Pile Shoes                       |     | Each    | 24      |       |



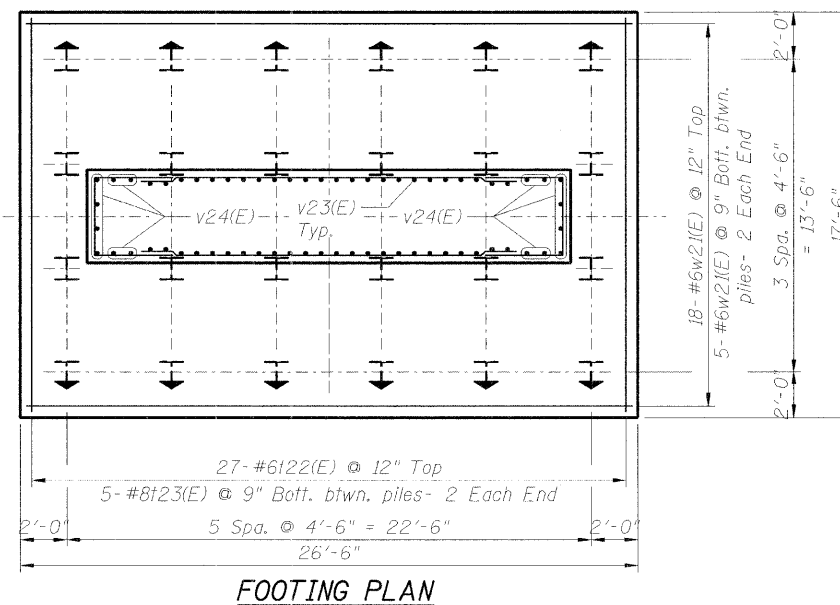
ELEVATION  
(Looking North)



END VIEW  
(Looking East)

PILE DATA

Type: HP 12x53  
Nominal Required Bearing: 418.5 k  
Factored Resistance Available: 139.5 k  
Est. Length: 45 ft  
No. Production Piles: 24 Including 1 Test Pile



FOOTING PLAN

|          |          |
|----------|----------|
| DESIGNED | 200      |
| CHECKED  | EXAMINED |
| DRAWN    | PASSED   |
| CHECKED  |          |

| REVISIONS | NAME | DATE |
|-----------|------|------|
|           |      |      |
|           |      |      |
|           |      |      |
|           |      |      |
|           |      |      |
|           |      |      |
|           |      |      |
|           |      |      |
|           |      |      |

ILLINOIS DEPARTMENT OF TRANSPORTATION  
PIER 1 DETAILS  
WOOD ST. BRIDGE OVER B.M.S.F. R.R.  
AND INDIAN CREEK  
SECTION - BR STATION 15+24.92  
KANE COUNTY STRUCTURE NO. 045-6022

**CMT**  
CRAWFORD MURPHY & TILLY, INC.  
CONSULTING ENGINEERS  
SPRINGFIELD, IL ■ AURORA, IL ■ ST. LOUIS, MO  
ROCKFORD, IL ■ PEORIA, IL ■ CHICAGO, IL

SCALE:  
DATE: SEPTEMBER 2008

DRAWN BY: PA  
CHECKED BY: ATI