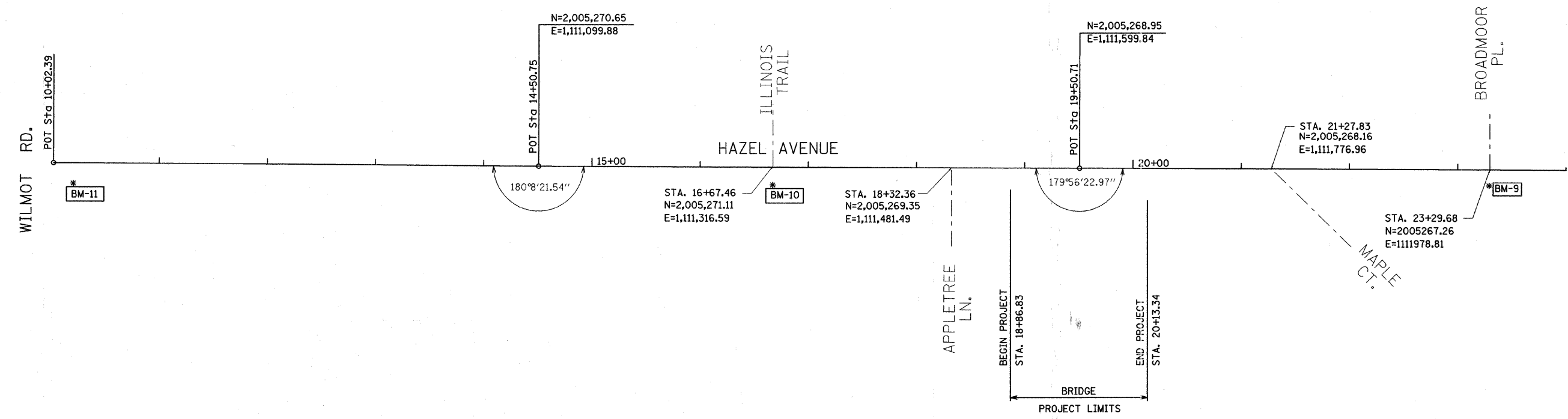


F.A. R.T.E.	SECTION	COUNTY	TOTAL SHEETS	SHEET NO.
	08-00081-00-BR	LAKE	26	6
STA.		TO STA.		
FED. ROAD DIST. NO.	ILLINOIS	FED. AID PROJECT		

63085



BENCHMARK 2007-70 (ALL ELEVATIONS ARE NAVD88 DATUM.)

VILLAGE OF DEERFIELD STANDARD MONUMENT LOCATED AT THE SOUTHEAST CORNER OF WILMOT ROAD AND SCHOOL STREET, AT 1313 WILMOT ROAD. THE MONUMENT IS 13.0 FEET EAST OF THE BACK OF WALK ON WILMOT ROAD AND 16.0 FEET SOUTH OF THE BACK OF ASPHALT PATH ON SCHOOL STREET. ELEVATION IS 668.29 NAVD88

- * BM-11
RAILROAD SPIKE IN POWER POLE AT THE SOUTHEAST CORNER OF HAZEL AND WILMOT ROAD
ELEVATIONS IS 660.30
- * BM-10
RAILROAD SPIKE IN POWER POLE AT THE SOUTHWEST CORNER OF HAZEL AND ILLINOIS TRAIL.
ELEVATIONS IS 658.85
- * BM-9
RAILROAD SPIKE IN POWER POLE AT THE NORTHWEST CORNER OF HAZEL AND BROADMOOR PLACE.
ELEVATIONS IS 659.21

PLAN	DATE
NO.	
BY	
DATE	
NO.	
BY	
DATE	
NO.	

PROFILE	DATE
NO.	
BY	
DATE	
NO.	
BY	
DATE	
NO.	

REVISIONS	
NAME	DATE

URS 100 SOUTH WACKER DRIVE TEL (312) 939-1000
SUITE 500 CHICAGO, IL 60606 FAX (312) 939-4198

VILLAGE OF DEERFIELD
ALIGNMENT & TIES
HAZEL AVENUE
STA. 10+02.39 TO STA. 39+00

SCALE: VERT. 1"=20'
HORIZ. 1"=50'
DATE: 9/12/2008
DRAWN BY: MIA
CHECKED BY: MHL