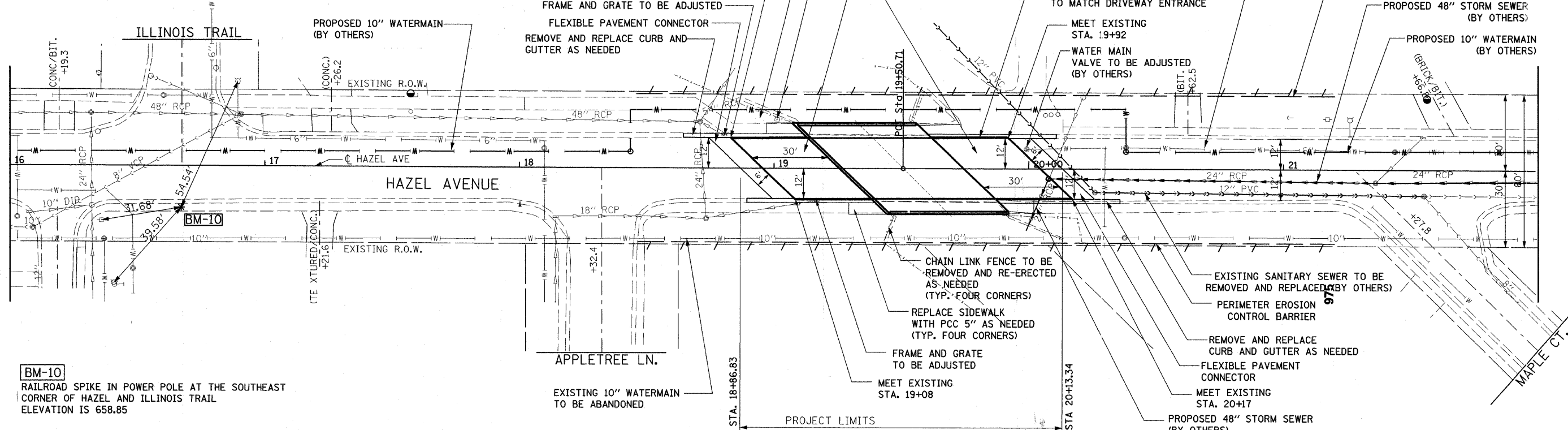


63085



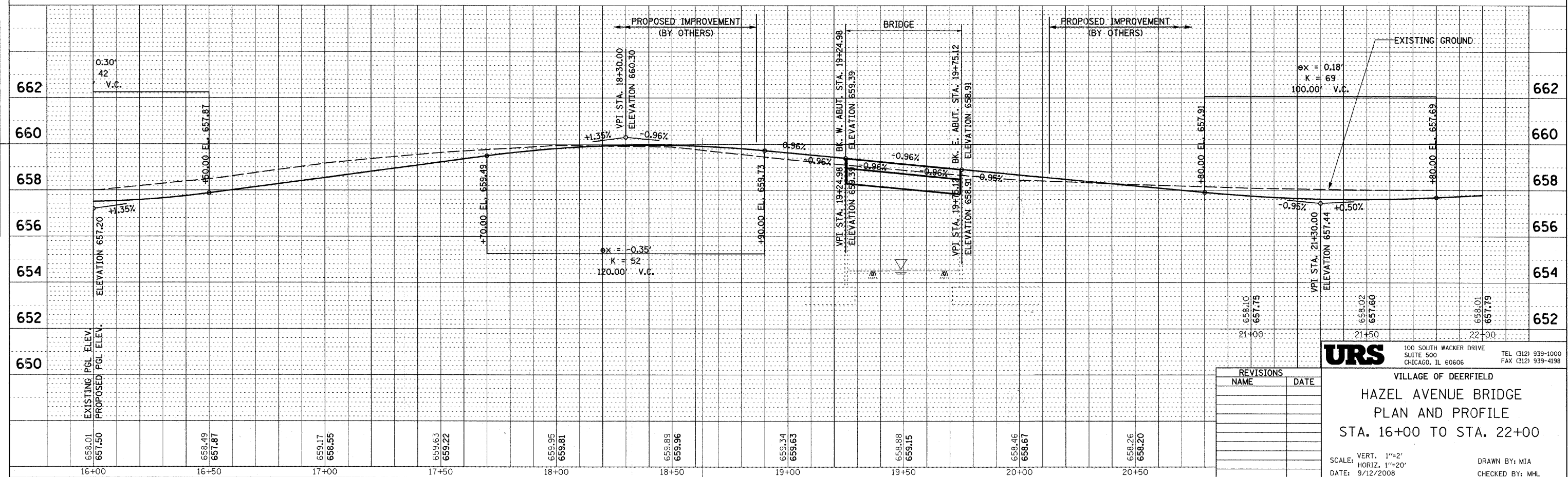
NOTE:
 CONTRACTOR SHALL PROVIDE FULL DEPTH SAW CUT AT THE LIMITS OF PAVEMENT AND SIDEWALK REMOVAL. THE COST OF FULL DEPTH SAW CUT SHALL BE INCLUDED IN THE UNIT PRICE OF PAVEMENT REMOVAL



BM-10
 RAILROAD SPIKE IN POWER POLE AT THE SOUTHEAST CORNER OF HAZEL AND ILLINOIS TRAIL ELEVATION IS 658.85

DATE	BY
DATE	BY

DATE	BY
DATE	BY



REVISIONS	
NAME	DATE

URS
 100 SOUTH WACKER DRIVE
 SUITE 500
 CHICAGO, IL 60606
 TEL (312) 939-1000
 FAX (312) 939-4198

VILLAGE OF DEERFIELD
 HAZEL AVENUE BRIDGE
 PLAN AND PROFILE
 STA. 16+00 TO STA. 22+00

SCALE: VERT. 1"=2'
 HORIZ. 1"=20'
 DATE: 9/12/2008
 DRAWN BY: MIA
 CHECKED BY: MHL