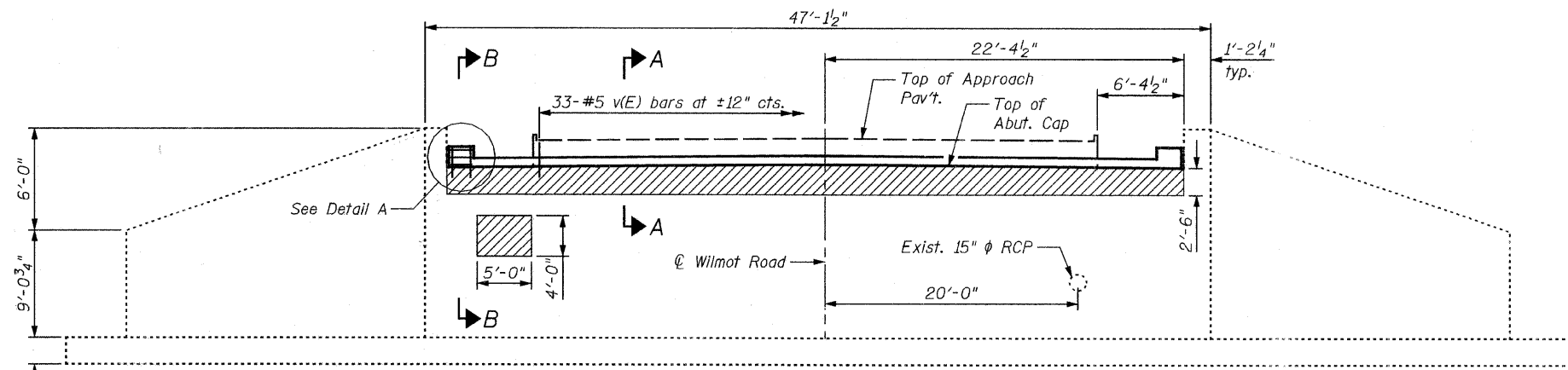
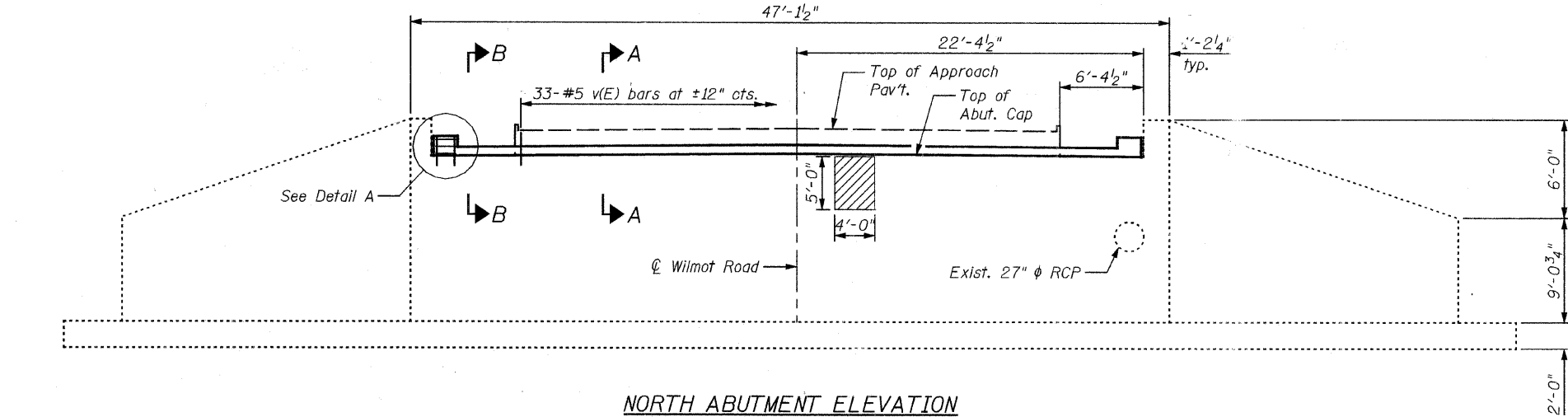


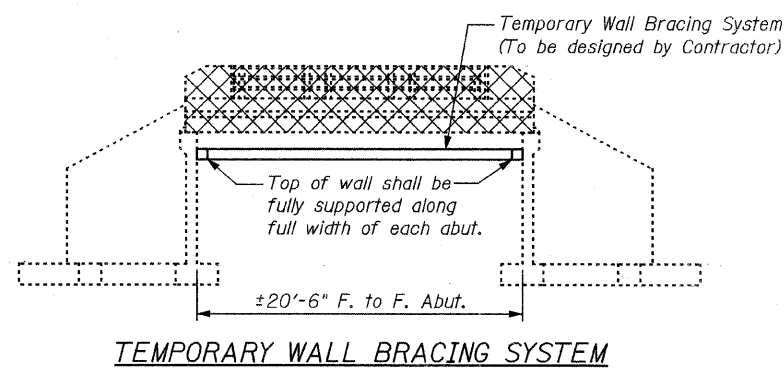
STATE OF ILLINOIS  
DEPARTMENT OF TRANSPORTATION



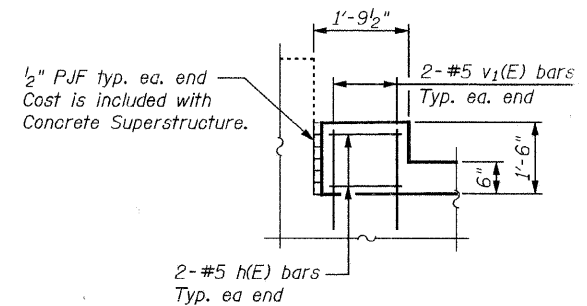
**SOUTH ABUTMENT ELEVATION**  
(Facing South)



**NORTH ABUTMENT ELEVATION**  
(Facing North)



**TEMPORARY WALL BRACING SYSTEM**



**DETAIL A**

**Notes:**  
Prior to removing the existing superstructure, a temporary wall bracing system shall be installed to brace each abutment wall to resist potential overturning. The Contractor shall submit a temporary support system design including plan details and calculations for review and acceptance by the Engineer. See Special Provisions.  
Existing reinforcement bars that have been cut and/or damaged during repair operations shall be supplemented by new in kind reinforcing bars. New bars shall be lapped a minimum of 32 bar diameters to existing bars. A mechanical bar splicer shall be used when it is not feasible to provide the minimum bar lap. No welding of bars shall be performed. See Special Provisions.  
Concrete Sealer shall be applied to each abutment cap according to Section 587 of the Standard Specifications.  
All construction joints shall be bonded unless otherwise noted.

DESIGNED	SHELBIAN
CHECKED	JBUCHOLC
DRAWN	SHELBIAN
CHECKED	JBUCHOLC

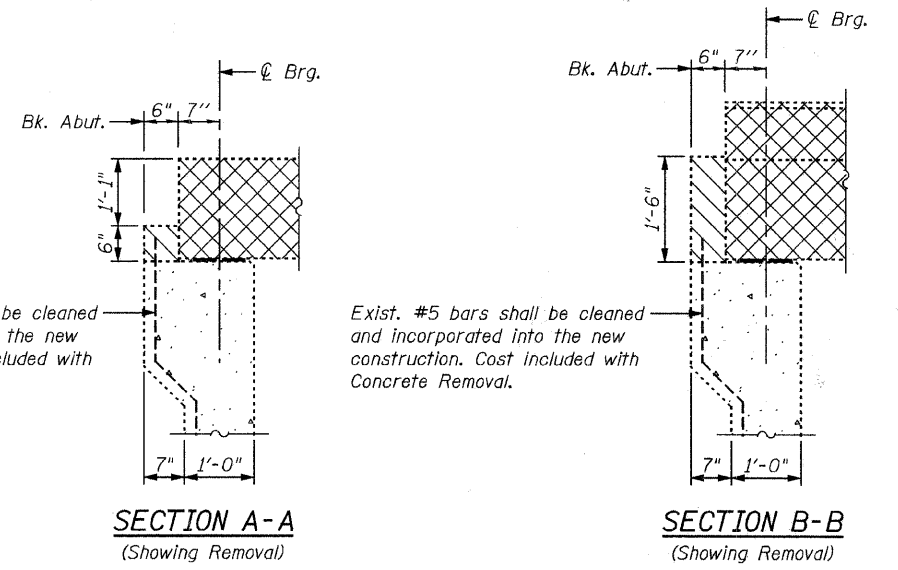
**LEGEND**

	Removal of Existing Superstructure
	Concrete Removal
	Structural Repair of Concrete Depth equal to or less than 5"

**ABUTMENTS  
BILL OF MATERIAL**

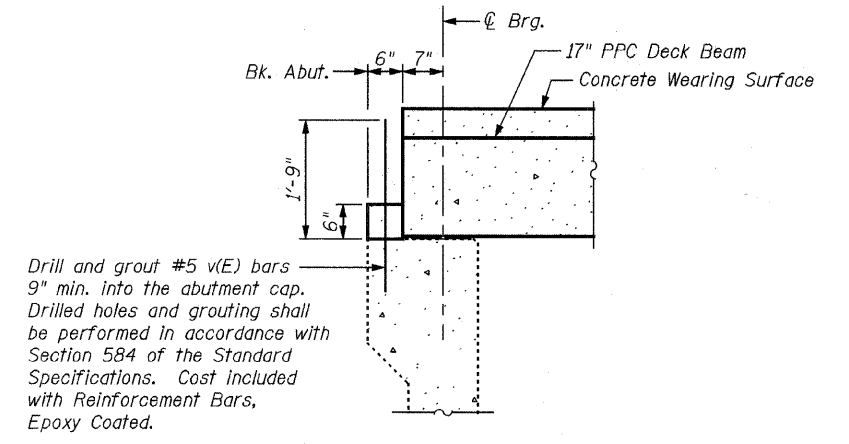
Bar	No.	Size	Length	Shape	
h(E)	8	#5	1'-5"		
v(E)	66	#5	2'-6"		
v1(E)	8	#5	2'-1"		
Reinforcement Bars, Epoxy Coated				Pound	210
Concrete Removal				Cu. Yd.	1.0
Structural Repair of Concrete (<=5")				Sq. Ft.	151.9
Concrete Sealer				Sq. Ft.	142
Temporary Wall Bracing System				L Sum	1

\* See Special Provisions



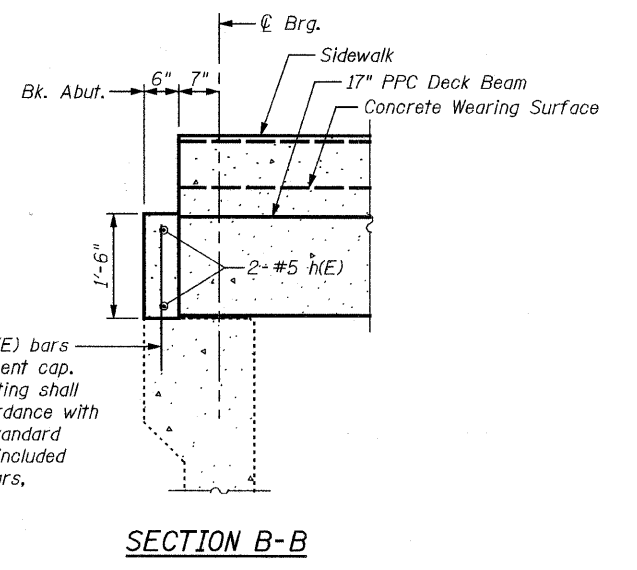
**SECTION A-A**  
(Showing Removal)

**SECTION B-B**  
(Showing Removal)



**SECTION A-A**

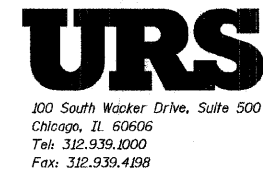
Drill and grout #5 v(E) bars 9" min. into the abutment cap. Drilled holes and grouting shall be performed in accordance with Section 584 of the Standard Specifications. Cost included with Reinforcement Bars, Epoxy Coated.



**SECTION B-B**

Drill and grout #5 v1(E) bars 9" min. into the abutment cap. Drilled holes and grouting shall be performed in accordance with Section 584 of the Standard Specifications. Cost included with Reinforcement Bars, Epoxy Coated.

**SUBSTRUCTURE REPAIRS & DETAILS  
STRUCTURE NO. 049-6151**



SHEET NO. 7 7 SHEETS	F.A.U. RTE.	SECTION	COUNTY	TOTAL SHEETS	SHEET NO.
	2718	08-00081-00-BR	LAKE	26	18
CONTRACT NO. 63085					
FED. ROAD DIST. NO. - ILLINOIS FED. AID PROJECT					