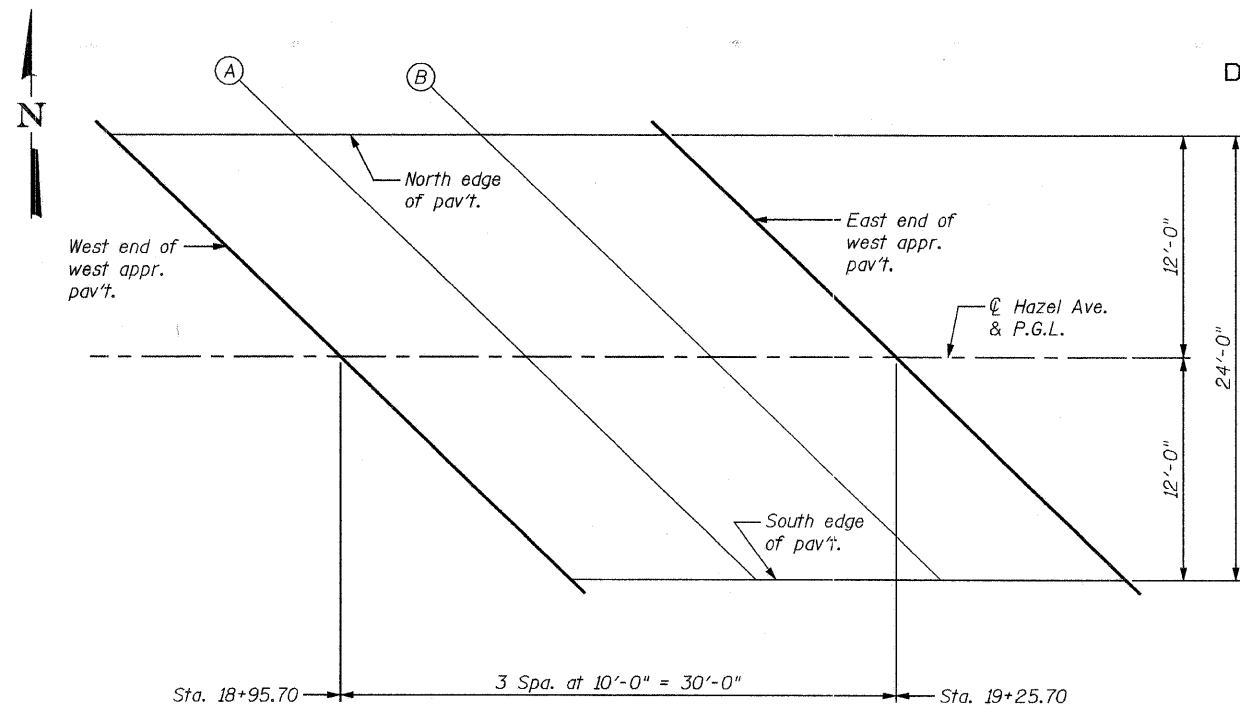
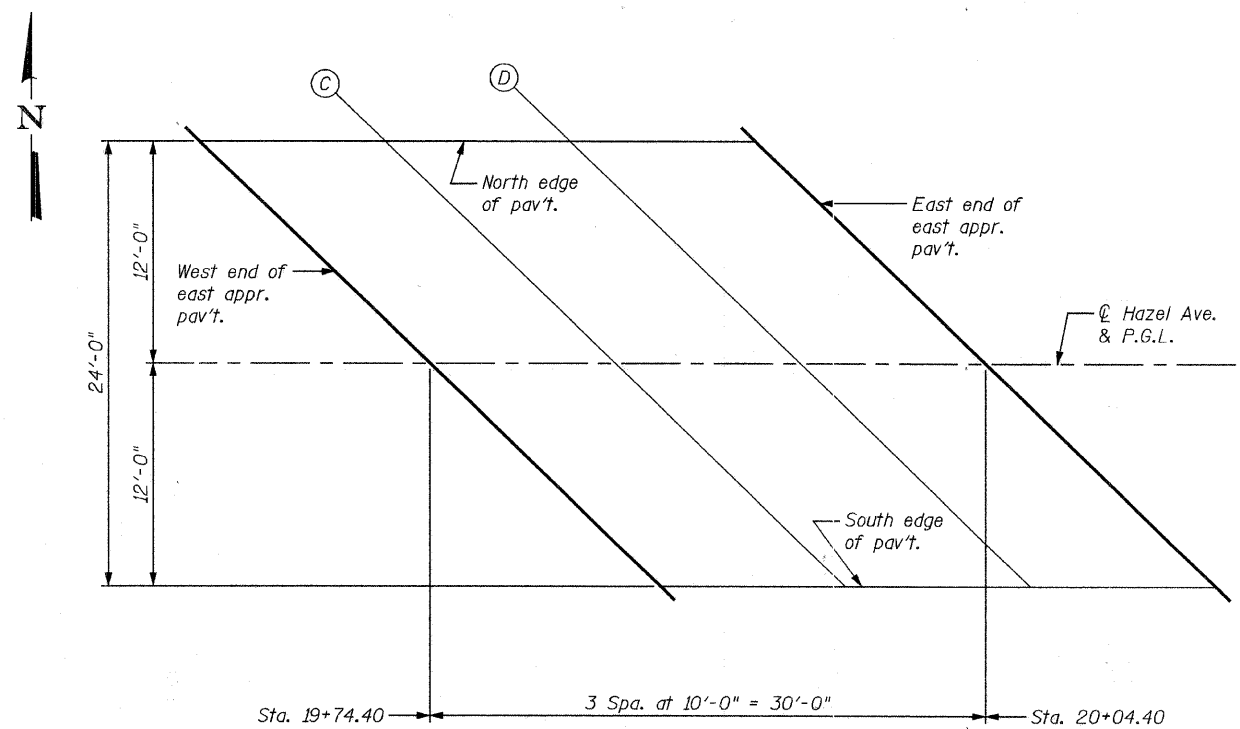


STATE OF ILLINOIS
DEPARTMENT OF TRANSPORTATION



PLAN - WEST APPROACH PAVEMENT



PLAN - EAST APPROACH PAVEMENT

WEST APPROACH SLAB
NORTH EDGE OF PAVEMENT

Location	Station	Offset	Theoretical Grade Elevations
W. end west appr. pav't.	18+83.27	-12.00	659.54
A	18+93.27	-12.00	659.45
B	19+03.27	-12.00	659.35
E. end west appr. pav't.	19+13.27	-12.00	659.26

EAST APPROACH SLAB
NORTH EDGE OF PAVEMENT

Location	Station	Offset	Theoretical Grade Elevations
W. end east appr. pav't.	19+61.97	-12.00	658.76
C	19+71.97	-12.00	658.67
D	19+81.97	-12.00	658.57
E. end east appr. pav't.	19+91.97	-12.00	658.48

WEST APPROACH SLAB
Hazel Ave. & P.G.L.

Location	Station	Offset	Theoretical Grade Elevations
W. end west appr. pav't.	18+95.70	0.00	659.67
A	19+05.70	0.00	659.58
B	19+15.70	0.00	659.48
E. end west appr. pav't.	19+25.70	0.00	659.39

EAST APPROACH SLAB
Hazel Ave. & P.G.L.

Location	Station	Offset	Theoretical Grade Elevations
W. end east appr. pav't.	19+74.40	0.00	658.92
C	19+84.40	0.00	658.80
D	19+94.40	0.00	658.71
E. end east appr. pav't.	20+04.40	0.00	658.61

WEST APPROACH SLAB
SOUTH EDGE OF PAVEMENT

Location	Station	Offset	Theoretical Grade Elevations
W. end west appr. pav't.	18+96.74	12.00	659.41
A	19+06.74	12.00	659.32
B	19+16.74	12.00	659.22
E. end west appr. pav't.	19+26.74	12.00	659.13

EAST APPROACH SLAB
SOUTH EDGE OF PAVEMENT

Location	Station	Offset	Theoretical Grade Elevations
W. end east appr. pav't.	19+86.83	12.00	658.53
C	19+96.83	12.00	658.44
D	20+06.83	12.00	658.34
E. end east appr. pav't.	20+16.83	12.00	658.25

DESIGNED	SCHELBIAN
CHECKED	JBUCHOLC
DRAWN	SCHELBIAN
CHECKED	JBUCHOLC



TOP OF APPROACH SLAB ELEVATIONS
STRUCTURE NO. 049-6152

SHEET NO. 2 8 SHEETS	F.A.U. RTE.	SECTION	COUNTY	TOTAL SHEETS	SHEET NO.
	1263	08-00081-00-BR	LAKE	26	20
CONTRACT NO. 63085					
FED. ROAD DIST. NO. - ILLINOIS FED. AID PROJECT					