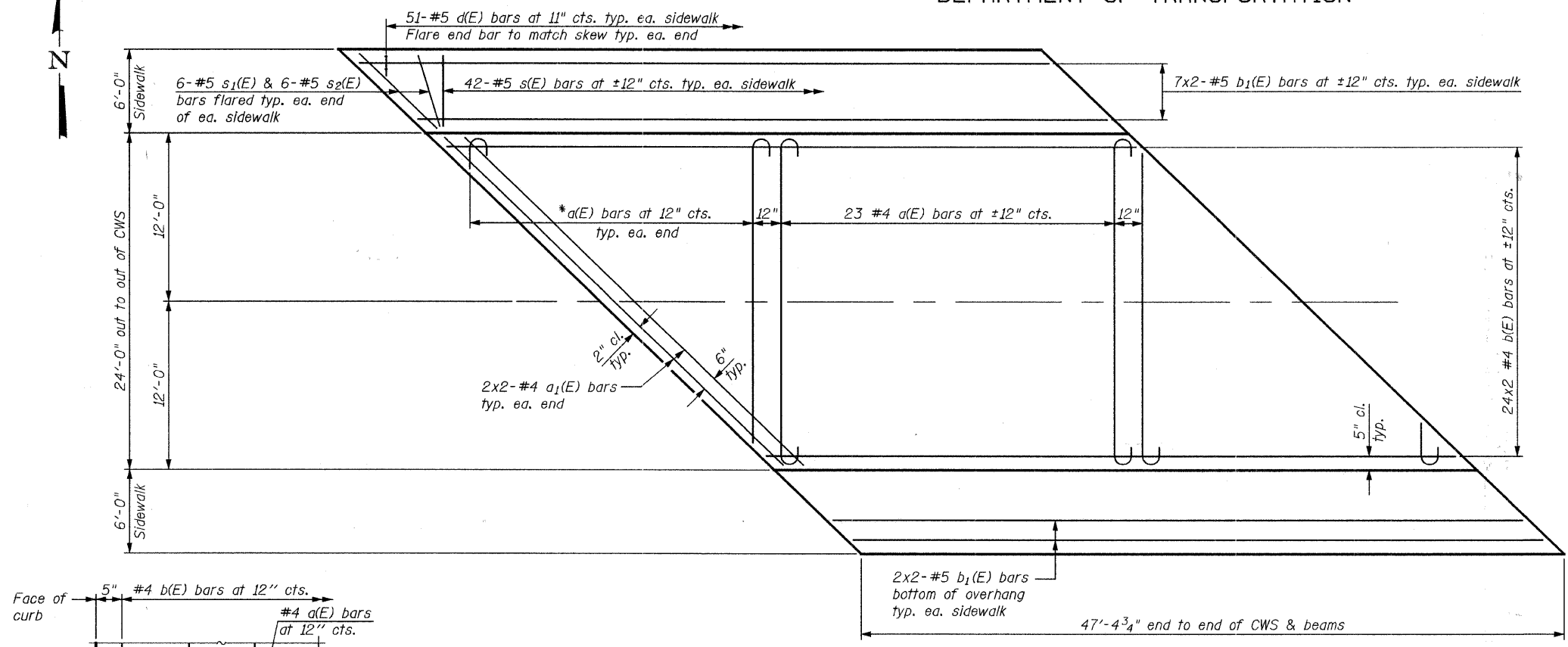
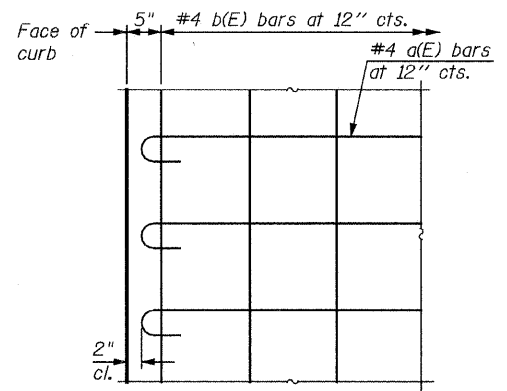


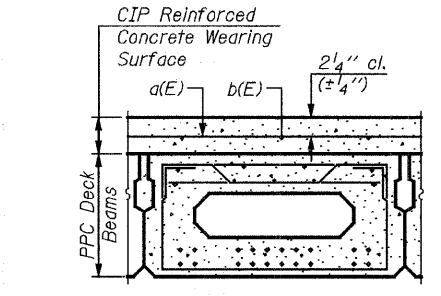
STATE OF ILLINOIS  
DEPARTMENT OF TRANSPORTATION



PLAN



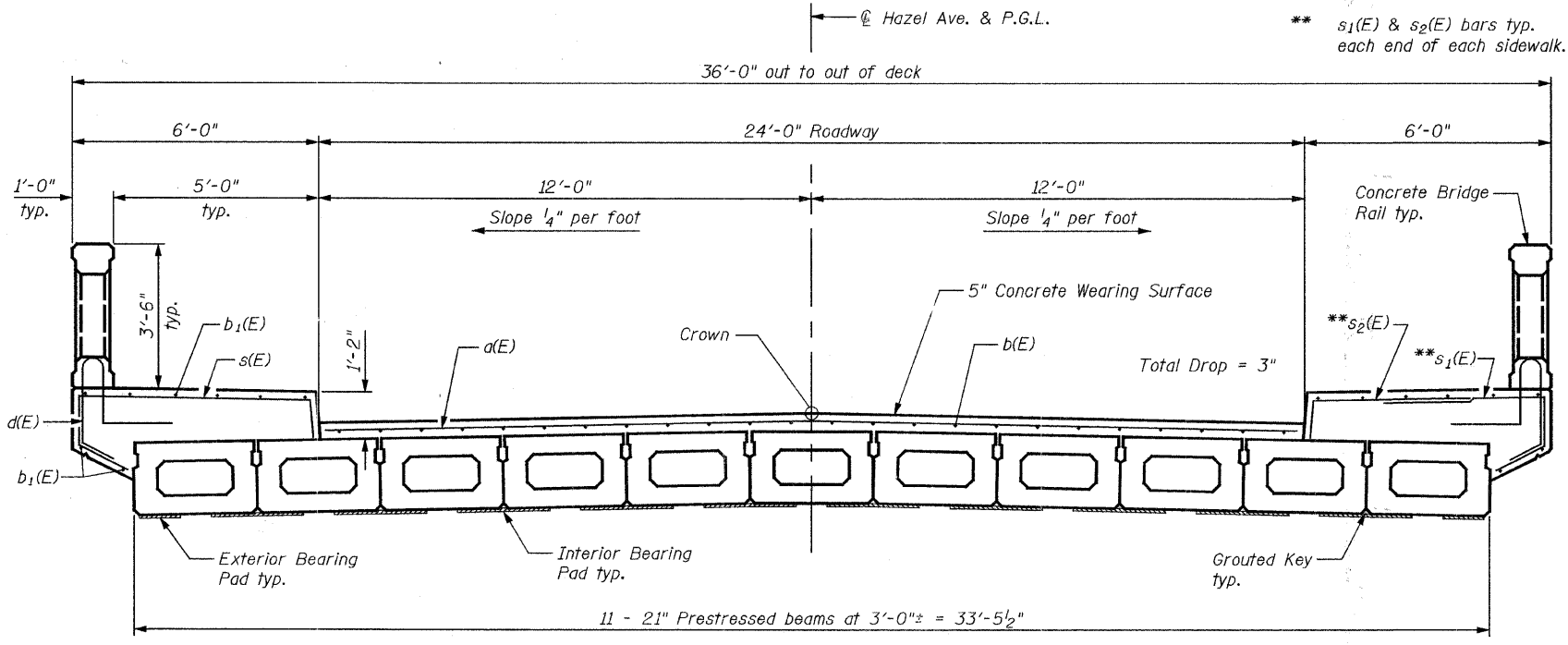
PLAN



CROSS SECTION

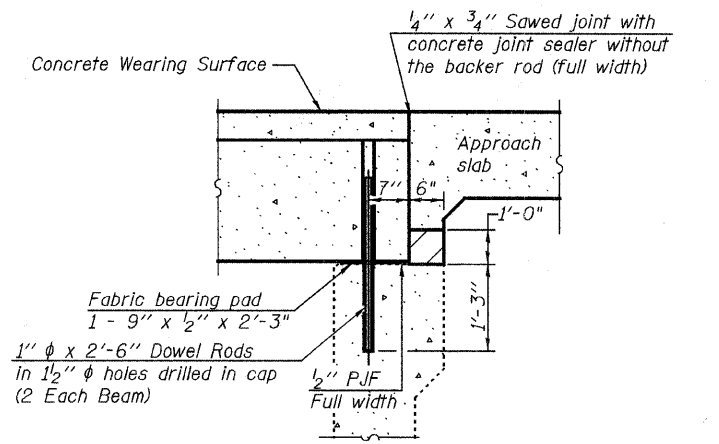
REINFORCED CONCRETE WEARING SURFACE DETAILS

\* Order an additional 25 - a(E) bars full length. Cut to fit skew and use remainder of bars in opposite end.

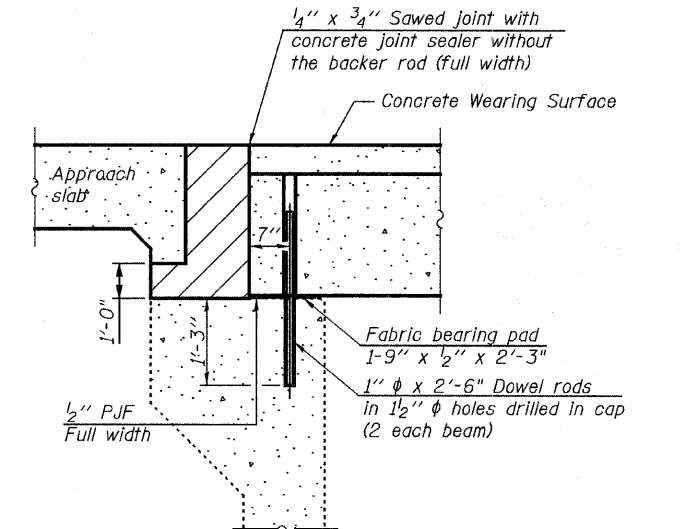


CROSS SECTION  
(Looking upstream)

**MINIMUM BAR LAP**  
(R.C. Wearing Surface & Sidewalk)  
#4 Bar = 1'-8"  
#5 Bar = 2'-2"

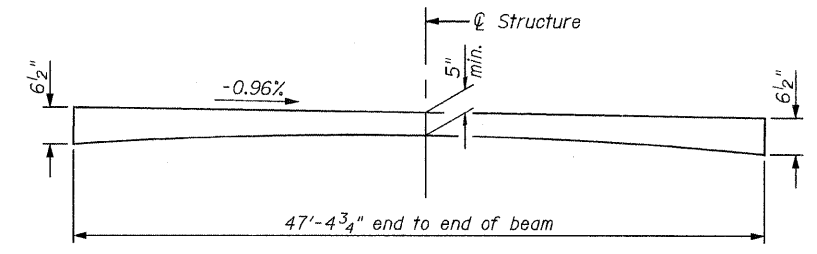


SECTION THRU EAST ABUTMENT



SECTION THRU WEST ABUTMENT

Notes:  
After beams have been erected, holes shall be drilled into substructure and anchor dowels placed. Dowel holes shall be filled with non-shrink grout to top of beam and allowed to cure min. 24 hrs. prior to grouting the shear keys.  
Burn existing dowel rods flush with existing concrete surface. Grind existing dowel rod smooth and seal with epoxy.  
All horizontal dimensions are at right angles to beam ends. Hatched areas to be poured after concrete wearing surface is in place. Quantity of concrete included with Concrete Superstructure.  
See Sheet Nos. 5 & 6 for beam and bearing pad details.

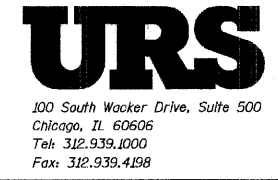


REINFORCED CONCRETE WEARING SURFACE PROFILE

DECK PLAN & SECTION  
STRUCTURE NO. 049-6152

DESIGNED	SHELBIAN
CHECKED	JBUCHOLC
DRAWN	SHELBIAN
CHECKED	JBUCHOLC

Notes:  
See Sheet No. 4 for superstructure details and Bill of Material.  
See Sheet No. 4 for concrete bridge rail reinforcement.  
Bars indicated thus 24x2-#4 etc. indicates 24 lines of bars with 2 lengths per line.



100 South Wacker Drive, Suite 500  
Chicago, IL 60606  
Tel: 312.939.1000  
Fax: 312.939.4198

SHEET NO. 3 8 SHEETS	F.A.U. RTE.	SECTION	COUNTY	TOTAL SHEETS	SHEET NO.
	1263	08-00081-00-BR	LAKE	26	21
FED. ROAD DIST. NO. - ILLINOIS			FED. AID PROJECT		
CONTRACT NO. 63085					