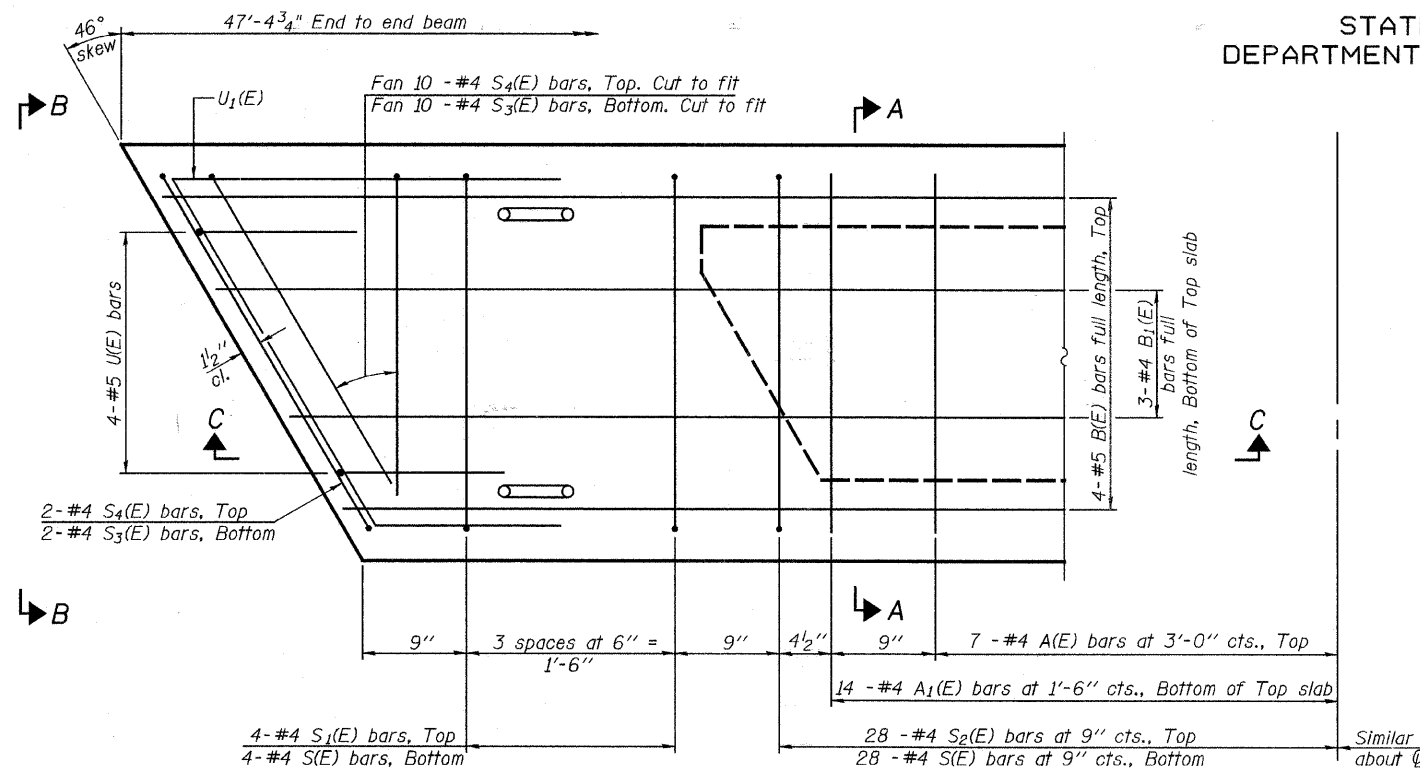
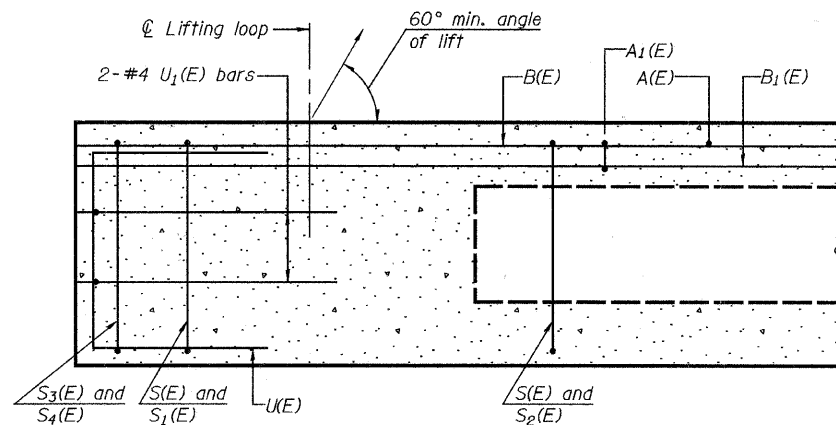


STATE OF ILLINOIS  
DEPARTMENT OF TRANSPORTATION

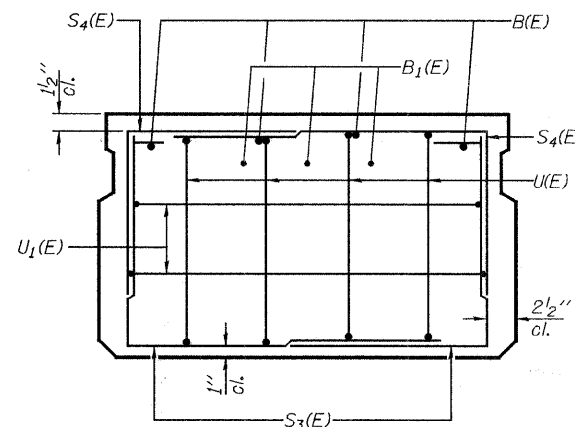


Note: Spacing of S(E) and S2(E) bars may be adjusted up to 4" in the immediate area of the transverse tie diaphragms to miss the block outs for the transverse ties.

PLAN VIEW

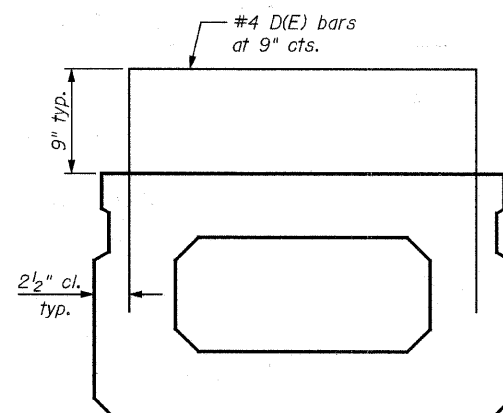


SECTION C-C

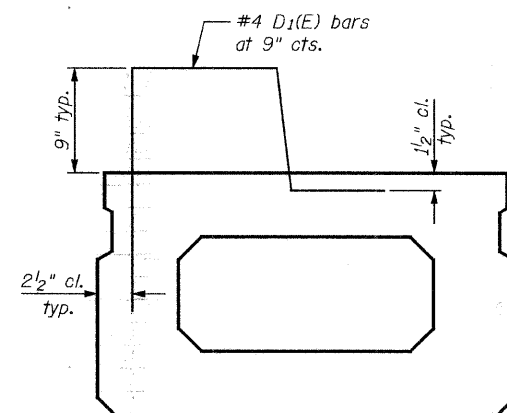


VIEW B-B

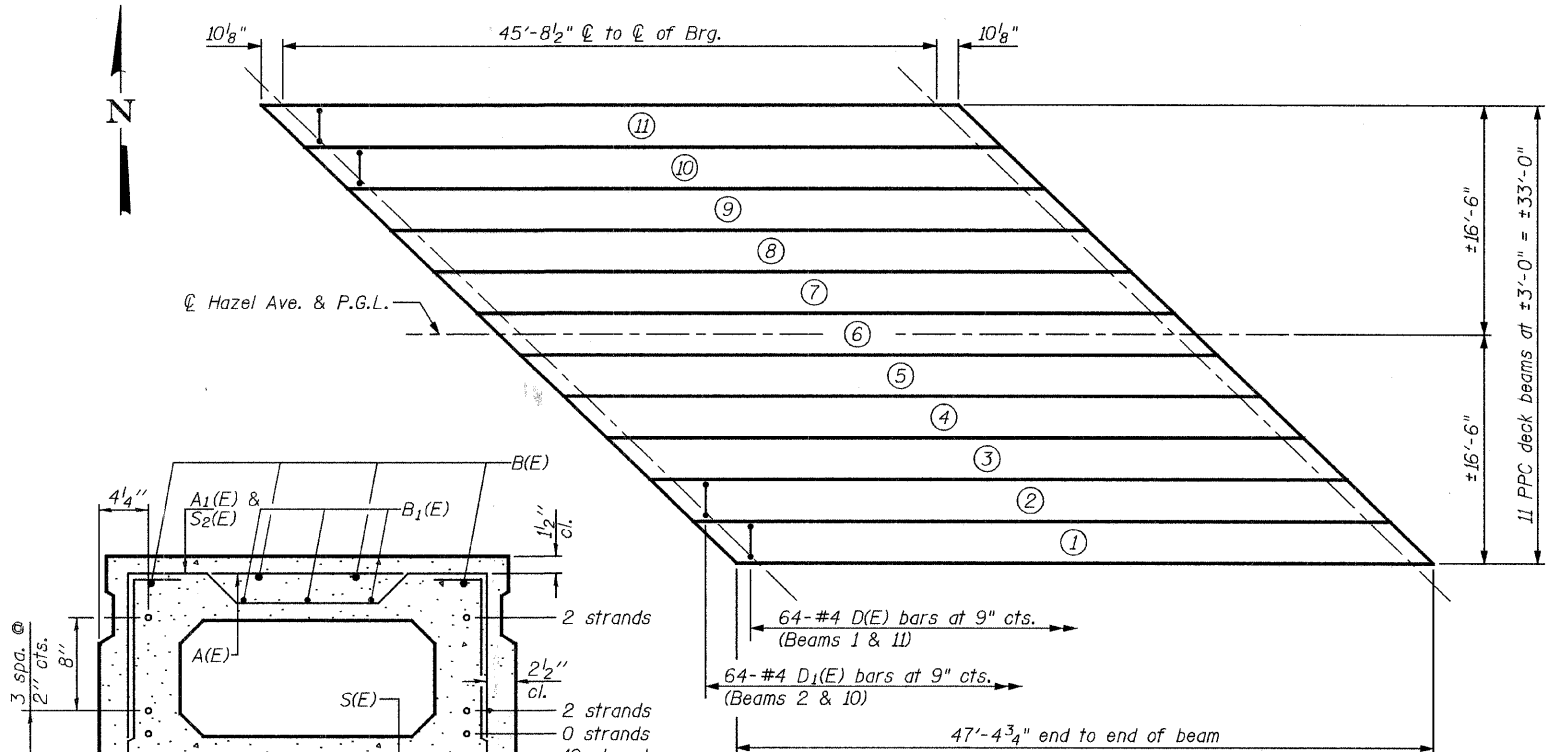
Notes:  
Work this sheet with Sheet No. 6.



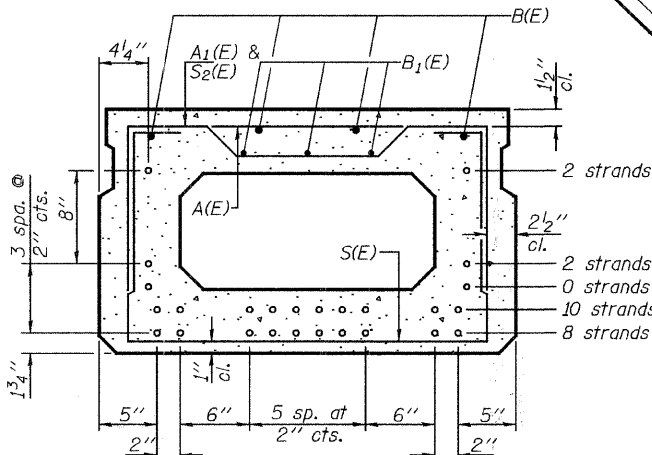
DECK BEAMS 1 & 11  
Showing additional reinforcement



DECK BEAMS 2 & 10  
Showing additional reinforcement  
(Deck Beam 10 shown, Deck Beam 2 opposite hand)

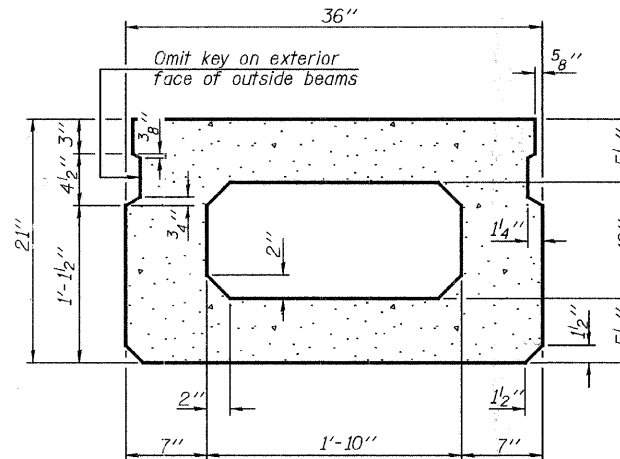


FRAMING PLAN



SECTION A-A

(Showing reinforcement and permissible strand locations)  
Note: Place the number of strands specified in each row symmetrically about the centerline of beam in the permissible strand locations shown.



SECTION A-A  
(Showing dimensions)

	0.5 Span
I	(in <sup>4</sup> ) 25,255
S <sub>b</sub>	(in <sup>3</sup> ) 2434.0
S <sub>t</sub>	(in <sup>3</sup> ) 2377.2
Q	(k/ft) 0.771
M <sub>P</sub>	(k) 201.4
s <sub>P</sub>	(k/ft) 0.499
M <sub>s</sub>	(k) 130.3
M <sub>L</sub>	(k) 187.9
M <sub>I</sub>	(k) 54.5

	Abut.
R <sub>P</sub>	(k) 17.6
R <sub>s</sub>	(k) 11.4
R <sub>L</sub>	(k) 36.9
R <sub>I</sub>	(k) 10.7
R <sub>Total</sub>	(k) 76.6

I: Non-composite moment of inertia of beam section (in<sup>4</sup>).  
S<sub>b</sub>: Non-composite section modulus for the bottom fiber of the prestressed beam (in<sup>3</sup>).  
S<sub>t</sub>: Non-composite section modulus for the top fiber of the prestressed beam (in<sup>3</sup>).  
Q: Un-factored non-composite dead load (kips/ft.).  
M<sub>P</sub>: Un-factored moment due to non-composite dead load conservatively taken at 0.5 of the span (kip-ft.).  
s<sub>P</sub>: Un-factored long-term composite (superimposed) dead load (kips/ft.).  
M<sub>s</sub>: Un-factored moment due to long-term composite (superimposed) dead load (kip-ft.).  
M<sub>L</sub>: Un-factored live load moment (kip-ft.).  
M<sub>I</sub>: Un-factored moment due to impact (kip-ft.).

PPC DECK BEAM DETAILS  
STRUCTURE NO. 049-6152

DESIGNED	SHELBIAN
CHECKED	JBUCHOLC
DRAWN	SHELBIAN
CHECKED	JBUCHOLC

SHEET NO. 5 8 SHEETS	F.A.U. RTE. 1263	SECTION 08-00081-00-BR	COUNTY LAKE	TOTAL SHEETS 26	SHEET NO. 23
	FED. ROAD DIST. NO. - ILLINOIS			FED. AID PROJECT	

**URS**  
100 South Wacker Drive, Suite 500  
Chicago, IL 60606  
Tel: 312.939.1000  
Fax: 312.939.4198