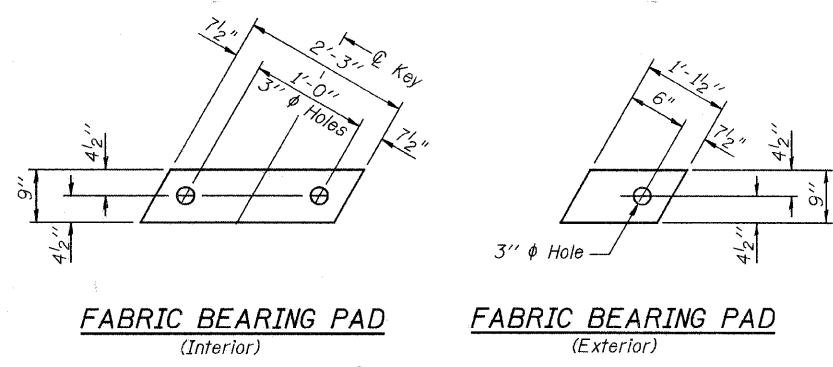


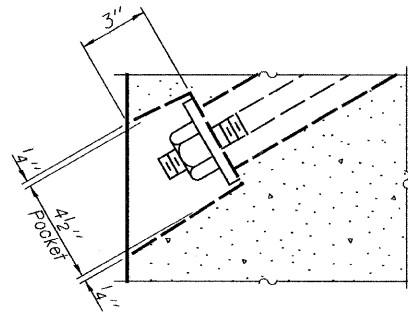
STATE OF ILLINOIS
DEPARTMENT OF TRANSPORTATION



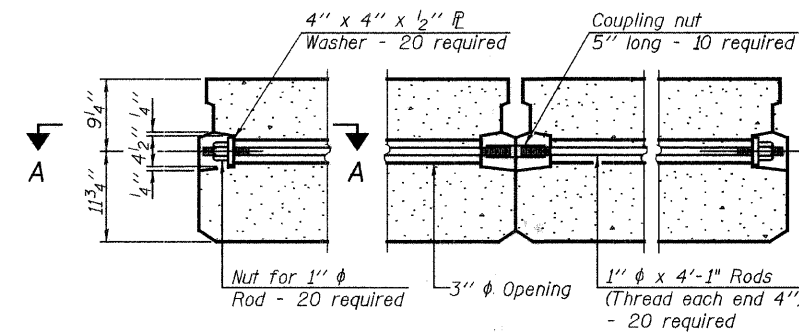
FABRIC BEARING PAD
(Interior)

FABRIC BEARING PAD
(Exterior)

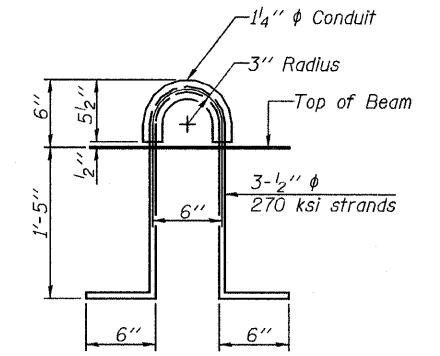
FIXED



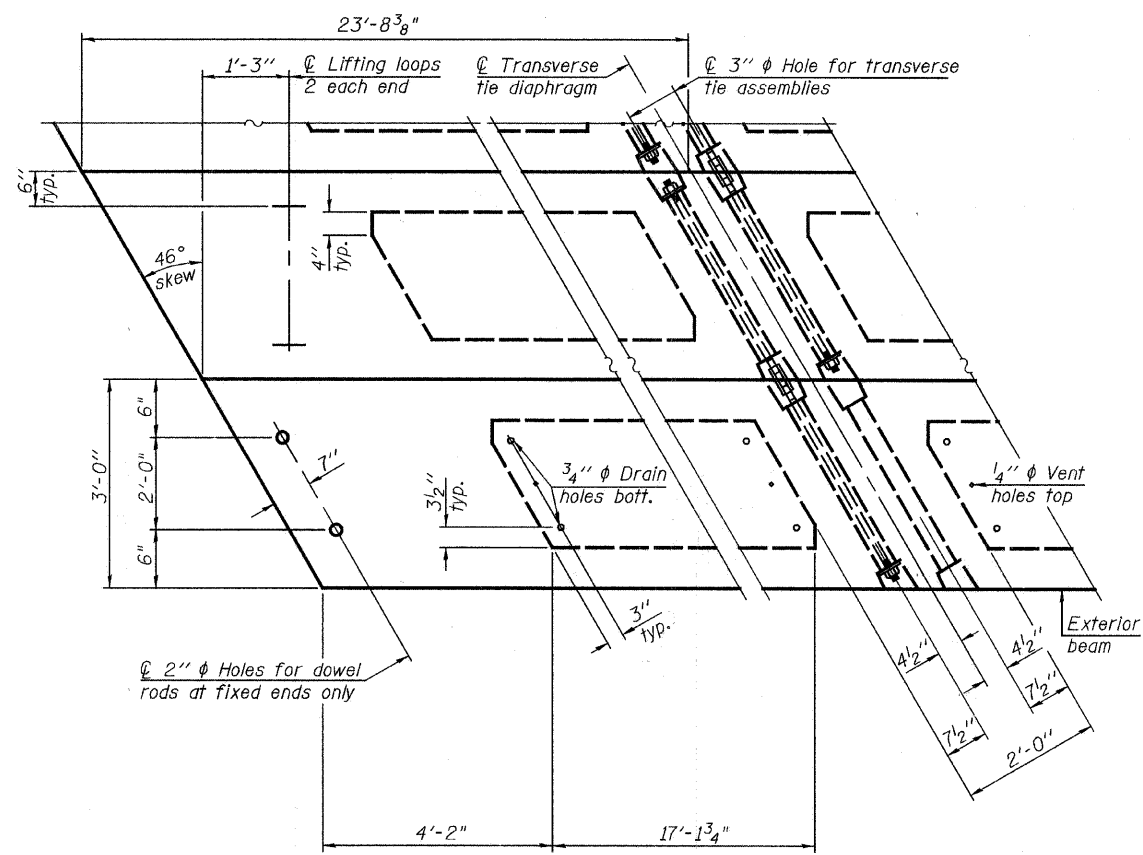
SECTION A-A



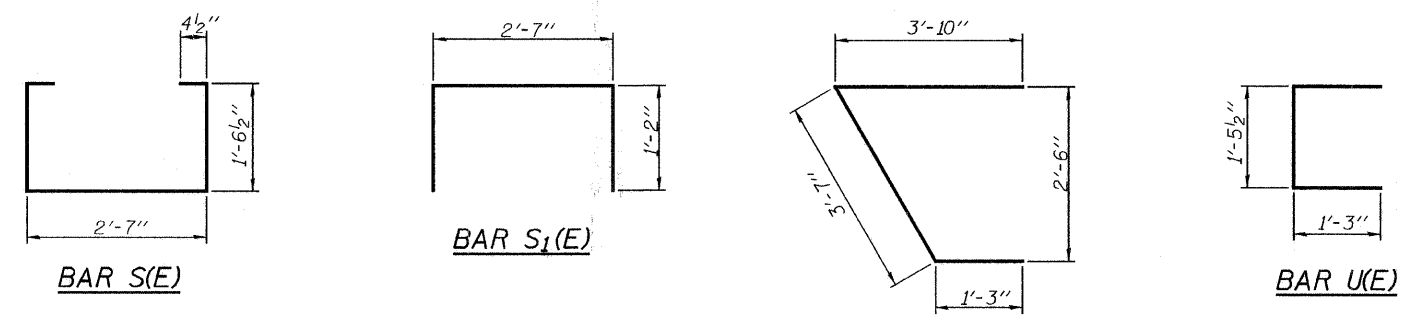
TYPICAL TRANSVERSE TIE ASSEMBLY



LIFTING LOOP DETAIL



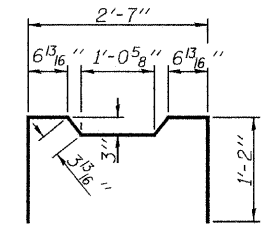
PLAN VIEW



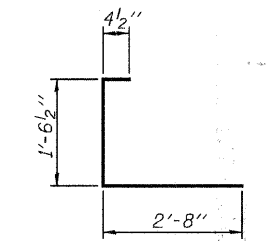
BAR S1(E)

BAR U1(E)

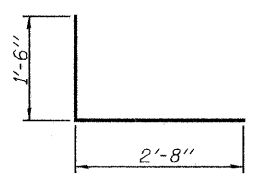
BAR U(E)



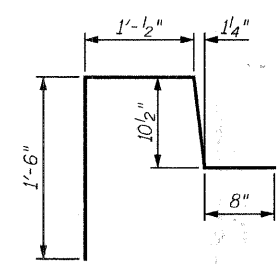
BAR S2(E)



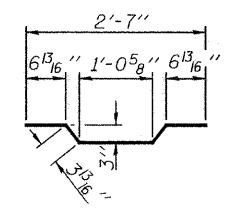
BAR S3(E)



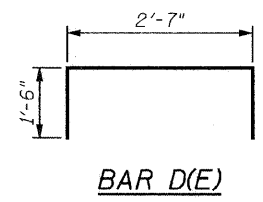
BAR S4(E)



BAR D1(E)



BAR A1(E)



BAR D(E)

BAR LIST
ONE BEAM ONLY
(For information only)

Bar	No.	Size	Length	Shape
A(E)	14	#4	2'-7"	—
A1(E)	28	#4	2'-11"	—
B(E)	4	#5	47'-1"	—
B1(E)	3	#4	47'-1"	—
D(E)	64	#4	5'-7"	□
D1(E)	64	#4	4'-1"	□
S(E)	64	#4	6'-5"	□
S1(E)	8	#4	4'-11"	□
S2(E)	56	#4	5'-2"	□
S3(E)	24	#4	4'-7"	□
S4(E)	24	#4	4'-2"	□
U(E)	8	#5	4'-0"	□
U1(E)	4	#4	8'-8"	□

Beams 1 & 11 Only
Beams 2 & 10 Only

Notes:
Prestressing steel shall be uncoated high strength, low relaxation 7-wire strand, Grade 270. The nominal diameter shall be 1/2" and the nominal cross-sectional area shall be 0.153 sq. in.
The 1" rods in the transverse tie assembly shall be tightened to a snug fit and the threads set. Pockets on exterior faces of bridge shall be filled with grout after transverse tie assembly is in place.
Reinforcement bars shall conform to ASTM A 706, Grade 60. (See Special Provisions).
Two 1/8" fabric adjusting shims of the dimensions of the exterior bearing pad shall be provided for each bearing pad location.
A minimum 2 1/2" lifting pin shall be used to engage the lifting loops during handling.
Corrosion Inhibitor, per Article 1020.05(b)(12) and 1021.06 of the Standard Specifications, shall be used in the concrete for precast prestressed concrete deck beams.
Compressive strength of prestressed concrete, f'c, shall be 6000 psi.
Compressive strength of prestressed concrete at release, f'ci, shall be 5000 psi.
See Sheet No. 5 for additional details.

BILL OF MATERIAL

* Precast Prestressed Conc. Deck Bms. (21" depth)	Sq. Ft.	1,565
---	---------	-------

* See Special Provisions

PPC DECK BEAM DETAILS
STRUCTURE NO. 049-6152

DESIGNED	SCHELBIAN
CHECKED	JBUCHOLC
DRAWN	SCHELBIAN
CHECKED	JBUCHOLC

Note: Connect beams in pairs with the transverse tie configuration shown.

URS
100 South Wacker Drive, Suite 500
Chicago, IL 60606
Tel: 312.939.1000
Fax: 312.939.4198

SHEET NO. 6 8 SHEETS	F.A.U. RTE.	SECTION	COUNTY	TOTAL SHEETS	SHEET NO.
	1263	08-00081-00-BR	LAKE	26	24
FED. ROAD DIST. NO. _ ILLINOIS			FED. AID PROJECT		
CONTRACT NO. 63085					