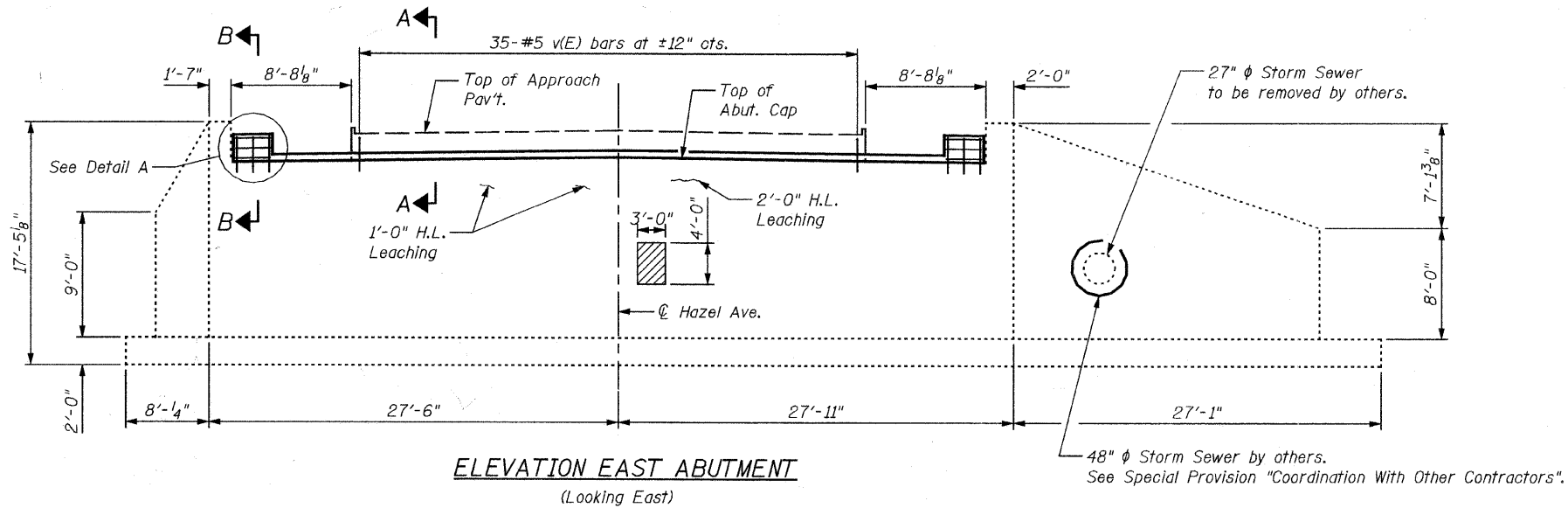
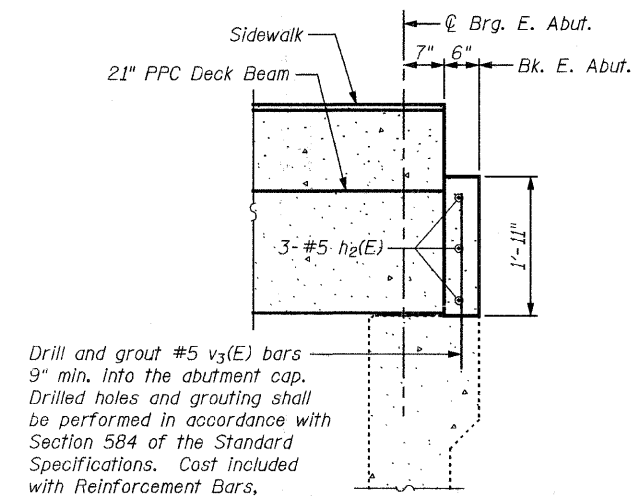
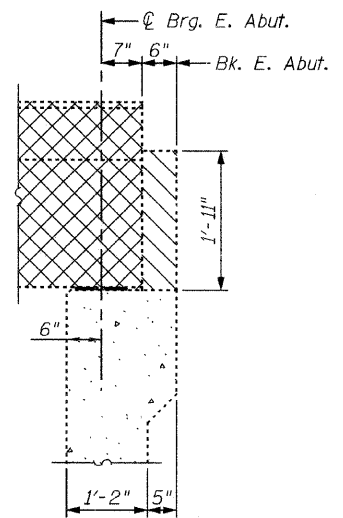
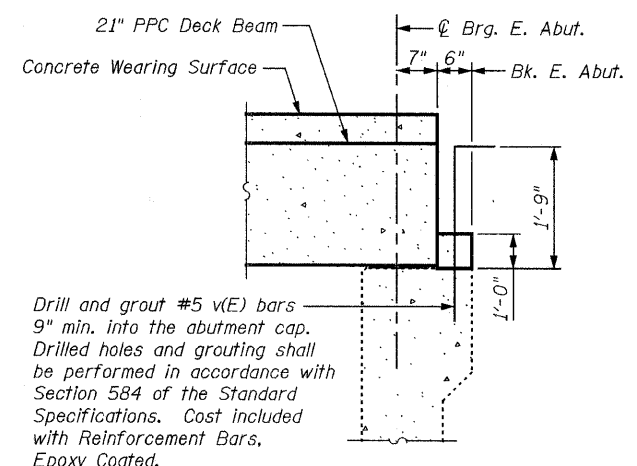
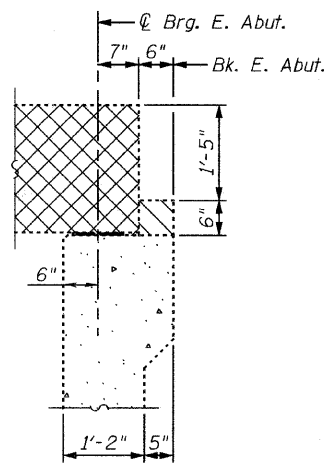


STATE OF ILLINOIS
DEPARTMENT OF TRANSPORTATION



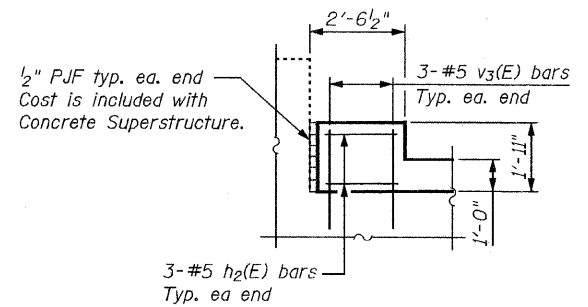
Notes:
Existing reinforcement bars that have been cut and/or damaged during repair operations shall be supplemented by new in kind reinforcing bars. New bars shall be lapped a minimum of 32 bar diameters to existing bars. A mechanical bar splicer shall be used when it is not feasible to provide the minimum bar lap. No welding of bars shall be performed. See Special Provisions.
Concrete Sealer shall be applied to each abutment cap according to Section 587 of the Standard Specifications.
All construction joints shall be bonded unless otherwise noted.
Work this sheet with Sheet No. 7.



**EAST ABUTMENT
BILL OF MATERIAL**

Bar	No.	Size	Length	Shape
h ₂ (E)	6	#5	2'-2"	—
v(E)	35	#5	3'-9"	—
v ₃ (E)	6	#5	2'-6"	—
* Reinforcement Bars, Epoxy Coated			Pound	170
* Concrete Removal			Cu. Yd.	0.7
* Structural Repair of Concrete (<=5")			Sq. Ft.	12.0
* Concrete Sealer			Sq. Ft.	82

* See Special Provisions



LEGEND

- Removal of Existing Superstructure
- Concrete Removal
- Structural Repair of Concrete Depth equal to or less than 5"
- Hairline Leaching Crack - Not to be sealed

DESIGNED	SHELBIAN
CHECKED	JBUCHOLC
DRAWN	SHELBIAN
CHECKED	JBUCHOLC

URS
100 South Wacker Drive, Suite 500
Chicago, IL 60606
Tel: 312.939.1000
Fax: 312.939.4198

**SUBSTRUCTURE REPAIRS & DETAILS
STRUCTURE NO. 049-6152**

SHEET NO. 8 8 SHEETS	F.A.U. RTE.	SECTION	COUNTY	TOTAL SHEETS	SHEET NO.
	1263	08-00081-00-BR	LAKE	26	26
			CONTRACT NO. 63085		
FED. ROAD DIST. NO. _ ILLINOIS FED. AID PROJECT					