

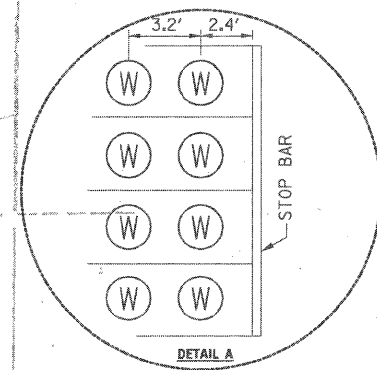
F.A. RTE.	SECTION	COUNTY	TOTAL SHEETS	SHEET NO.
		COOK	48	3

CONTRACT NO. 63087
FED. ROAD DIST. NO. ILLINOIS FED. AID PROJECT

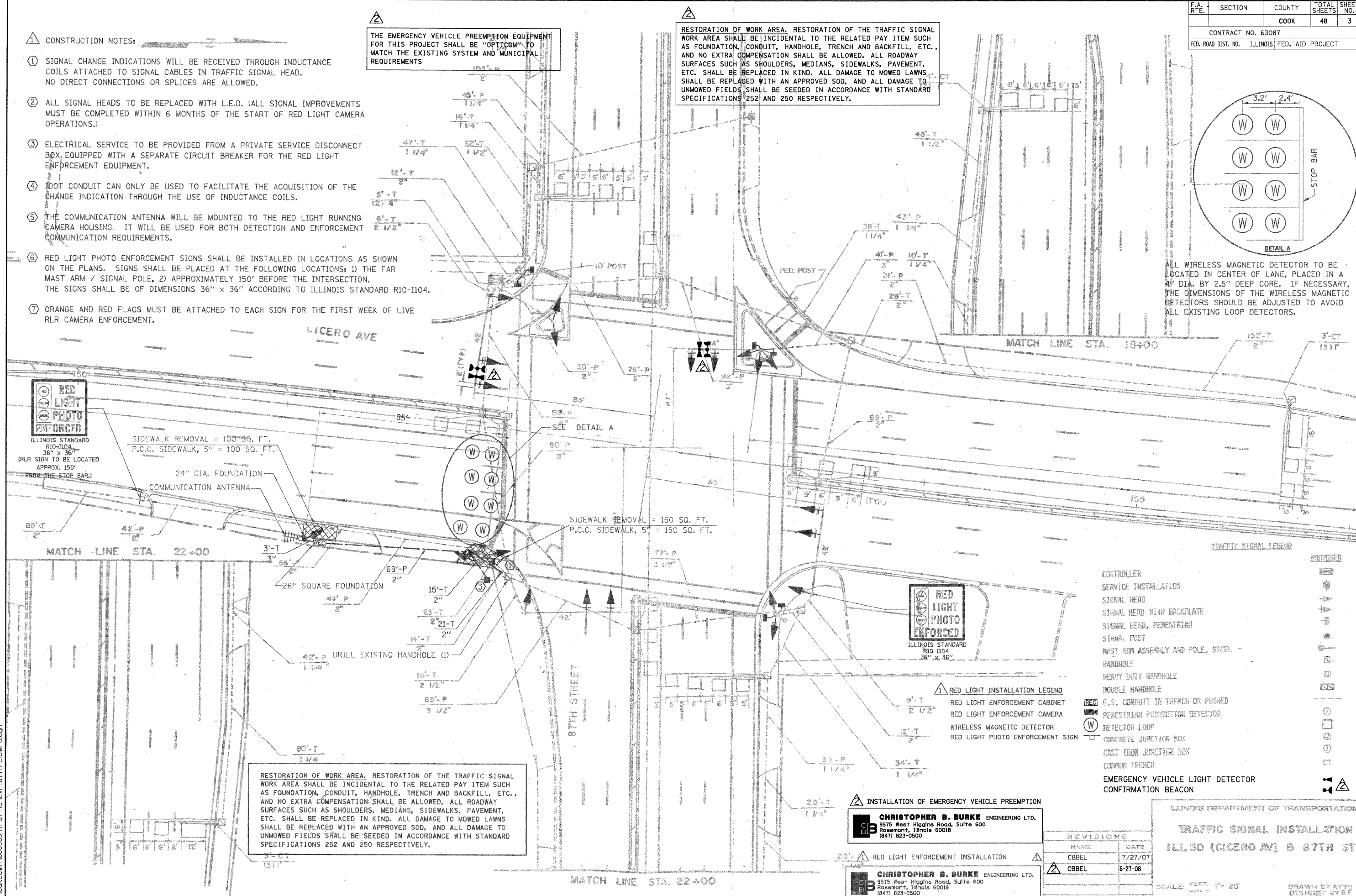
- CONSTRUCTION NOTES:**
- SIGNAL CHANGE INDICATIONS WILL BE RECEIVED THROUGH INDUCTANCE COILS ATTACHED TO SIGNAL CABLES IN TRAFFIC SIGNAL HEAD. NO DIRECT CONNECTIONS OR SPLICES ARE ALLOWED.
 - ALL SIGNAL HEADS TO BE REPLACED WITH L.E.D. (ALL SIGNAL IMPROVEMENTS MUST BE COMPLETED WITHIN 6 MONTHS OF THE START OF RED LIGHT CAMERA OPERATIONS.)
 - ELECTRICAL SERVICE TO BE PROVIDED FROM A PRIVATE SERVICE DISCONNECT BOX EQUIPPED WITH A SEPARATE CIRCUIT BREAKER FOR THE RED LIGHT ENFORCEMENT EQUIPMENT.
 - DOT CONDUIT CAN ONLY BE USED TO FACILITATE THE ACQUISITION OF THE CHANGE INDICATION THROUGH THE USE OF INDUCTANCE COILS.
 - THE COMMUNICATION ANTENNA WILL BE MOUNTED TO THE RED LIGHT RUNNING CAMERA HOUSING. IT WILL BE USED FOR BOTH DETECTION AND ENFORCEMENT COMMUNICATION REQUIREMENTS.
 - RED LIGHT PHOTO ENFORCEMENT SIGNS SHALL BE INSTALLED IN LOCATIONS AS SHOWN ON THE PLANS. SIGNS SHALL BE PLACED AT THE FOLLOWING LOCATIONS: 1) THE FAR MAST ARM / SIGNAL POLE, 2) APPROXIMATELY 150' BEFORE THE INTERSECTION. THE SIGNS SHALL BE OF DIMENSIONS 36" x 36" ACCORDING TO ILLINOIS STANDARD R10-I104.
 - ORANGE AND RED FLAGS MUST BE ATTACHED TO EACH SIGN FOR THE FIRST WEEK OF LIVE RLR CAMERA ENFORCEMENT.

THE EMERGENCY VEHICLE PREEMPTION EQUIPMENT FOR THIS PROJECT SHALL BE "OPTICOM" TO MATCH THE EXISTING SYSTEM AND MUNICIPAL REQUIREMENTS

RESTORATION OF WORK AREA. RESTORATION OF THE TRAFFIC SIGNAL WORK AREA SHALL BE INCIDENTAL TO THE RELATED PAY ITEM SUCH AS FOUNDATION, CONDUIT, HANDHOLE, TRENCH AND BACKFILL, ETC., AND NO EXTRA COMPENSATION SHALL BE ALLOWED. ALL ROADWAY SURFACES SUCH AS SHOULDERS, MEDIANS, SIDEWALKS, PAVEMENT, ETC. SHALL BE REPLACED IN KIND. ALL DAMAGE TO MOWED LAWNS, SHALL BE REPLACED WITH AN APPROVED SOD, AND ALL DAMAGE TO UNMOWED FIELDS SHALL BE SEEDED IN ACCORDANCE WITH STANDARD SPECIFICATIONS 252 AND 250 RESPECTIVELY.



ALL WIRELESS MAGNETIC DETECTOR TO BE LOCATED IN CENTER OF LANE, PLACED IN A 4" DIA. BY 2.5" DEEP CORE. IF NECESSARY, THE DIMENSIONS OF THE WIRELESS MAGNETIC DETECTORS SHOULD BE ADJUSTED TO AVOID ALL EXISTING LOOP DETECTORS.



RED LIGHT PHOTO ENFORCED
ILLINOIS STANDARD R10-I104
36" x 36"
(RLR SIGN TO BE LOCATED APPROX. 150' FROM THE STOP BAR.)

SIDEWALK REMOVAL = 100 SQ. FT.
P.C.C. SIDEWALK, 5" = 100 SQ. FT.

SIDEWALK REMOVAL = 150 SQ. FT.
P.C.C. SIDEWALK, 5" = 150 SQ. FT.

RESTORATION OF WORK AREA. RESTORATION OF THE TRAFFIC SIGNAL WORK AREA SHALL BE INCIDENTAL TO THE RELATED PAY ITEM SUCH AS FOUNDATION, CONDUIT, HANDHOLE, TRENCH AND BACKFILL, ETC., AND NO EXTRA COMPENSATION SHALL BE ALLOWED. ALL ROADWAY SURFACES SUCH AS SHOULDERS, MEDIANS, SIDEWALKS, PAVEMENT, ETC. SHALL BE REPLACED IN KIND. ALL DAMAGE TO MOWED LAWNS SHALL BE REPLACED WITH AN APPROVED SOD, AND ALL DAMAGE TO UNMOWED FIELDS SHALL BE SEEDED IN ACCORDANCE WITH STANDARD SPECIFICATIONS 252 AND 250 RESPECTIVELY.

RED LIGHT PHOTO ENFORCED
ILLINOIS STANDARD R10-I104
36" x 36"

- RED LIGHT INSTALLATION LEGEND**
- RED LIGHT ENFORCEMENT CABINET
 - RED LIGHT ENFORCEMENT CAMERA
 - WIRELESS MAGNETIC DETECTOR
 - RED LIGHT PHOTO ENFORCEMENT SIGN

- PROPOSED**
- CONTROLLER
 - SERVICE INSTALLATION
 - SIGNAL HEAD
 - SIGNAL HEAD WITH BACKPLATE
 - SIGNAL HEAD, PEDESTRIAN
 - SIGNAL POST
 - MAST ARM ASSEMBLY AND POLE, STEEL
 - HANDHOLE
 - HEAVY DUTY HANDHOLE
 - DOUBLE HANDHOLE
 - G.S. CONDUIT IN TRENCH OR PUSHED
 - PEDESTRIAN PUSHBUTTON DETECTOR
 - DETECTOR LOOP
 - CONCRETE JUNCTION BOX
 - CAST IRON JUNCTION BOX
 - COMMON TRENCH
 - EMERGENCY VEHICLE LIGHT DETECTOR
 - CONFIRMATION BEACON

INSTALLATION OF EMERGENCY VEHICLE PREEMPTION
CHRISTOPHER B. BURKE ENGINEERING LTD.
9575 West Higgins Road, Suite 600
Rosemont, Illinois 60018
(847) 823-0500

RED LIGHT ENFORCEMENT INSTALLATION
CHRISTOPHER B. BURKE ENGINEERING LTD.
9575 West Higgins Road, Suite 600
Rosemont, Illinois 60018
(847) 823-0500

REVISIONS	
NAME	DATE
CBBEL	7/27/07
CBBEL	6-27-08

ILLINOIS DEPARTMENT OF TRANSPORTATION
TRAFFIC SIGNAL INSTALLATION
ILL 50 (CICERO AV) @ 87TH ST
SCALE: VERT. 1" = 20'
HORIZ. 1" = 40'
DATE APR 23, 1984
DRAWN BY ATYU
DESIGNED BY RF
CHECKED BY WEN

N:\ocklawn\080363\Traffic\VP_87th-Cicero.dgn