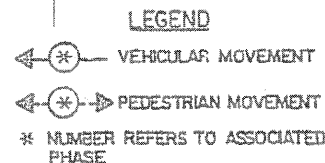
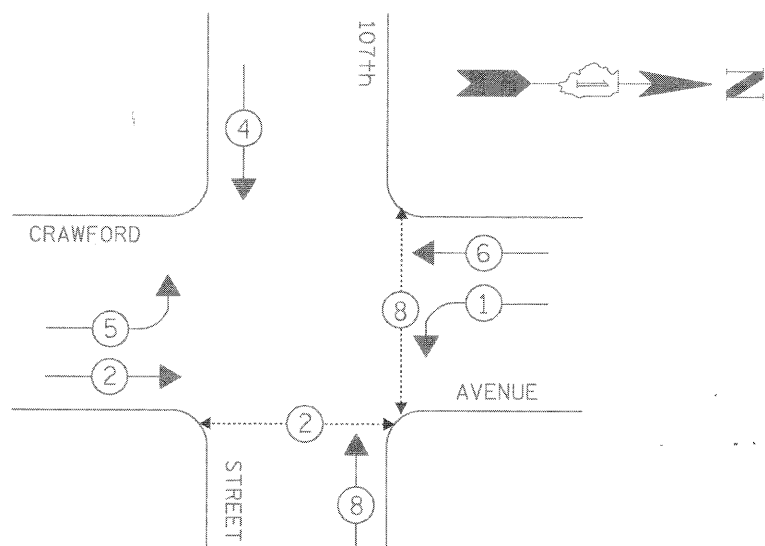
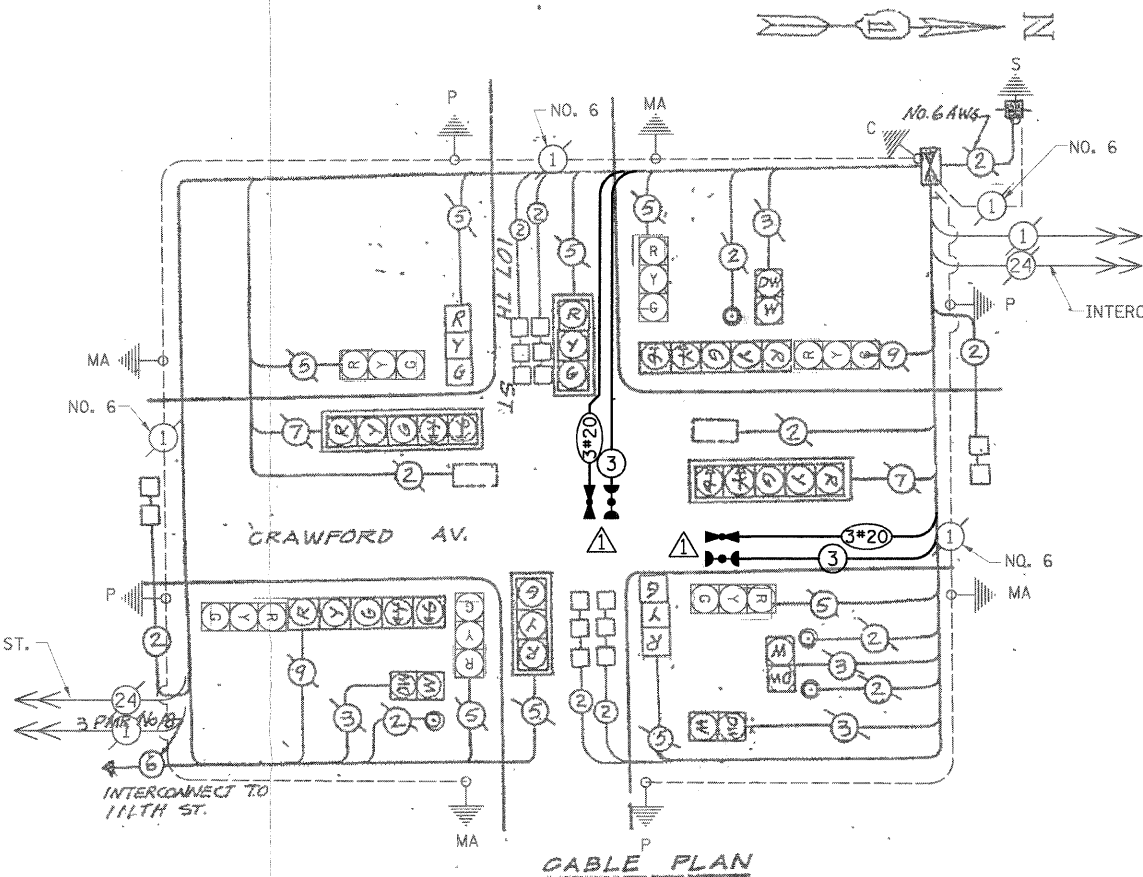


CONTROLLER SEQUENCE IV

REFERRING TO STANDARD 2393-1, THE VEHICULAR AND PEDESTRIAN PHASES USED ARE DESIGNATED BELOW.

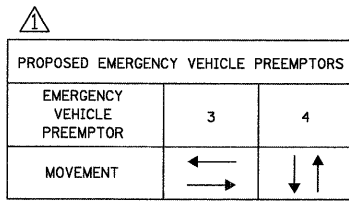
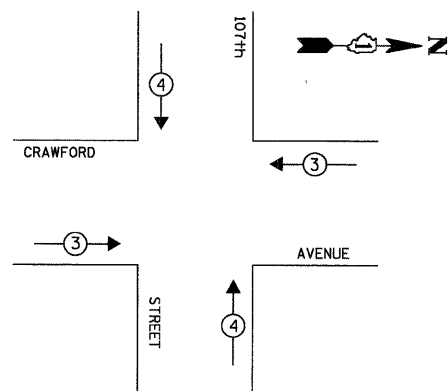


PHASE DESIGNATION DIAGRAM



- CABLE PLAN LEGEND**
- 6" 8" TRAFFIC SIGNAL SECTION
 - 12" TRAFFIC SIGNAL SECTION
 - 12" PEDESTRIAN SIGNAL SECTION
 - CONTROLLER CABINET
 - SERVICE INSTALLATION
 - VEHICLE DETECTOR, INDUCTION LOOP
 - PUSHBUTTON DETECTOR
 - ⊙ DENOTES NUMBER OF CONDUCTORS (NEW). ALL LOOP DETECTOR CABLE TO BE SHIELDED. ALL CABLE NO. 14 EXCEPT AS INDICATED.
 - ② INDICATES EXISTING CABLE
 - RYG SIGNAL FACE WITH BACKPLATE "P" INDICATES PROGRAMMED
 - R EXISTING SIGNAL SECTION
 - ⊙ EXISTING PUSHBUTTON DETECTOR
 - VEHICLE DETECTOR, INDUCTION LOOP, EXISTING
 - ⚠ EMERGENCY VEHICLE LIGHT DETECTOR CONFIRMATION BEACON

EMERGENCY VEHICLE PREEMPTION SEQUENCE



SCHEDULE OF QUANTITIES

ITEM	UNIT	TOTAL
MAINTENANCE OF EXISTING TRAFFIC SIGNAL INSTALLATION	EACH	1
ELECTRIC CABLE IN CONDUIT, SIGNAL, NO. 14 3C	FOOT	245
LIGHT DETECTOR	EACH	2
LIGHT DETECTOR AMPLIFIER	EACH	1
MODIFY EXISTING CONTROLLER CABINET	EACH	1
ELECTRIC CABLE IN CONDUIT, NO. 20 3C, TWISTED, SHIELDED	FOOT	245
TRAFFIC CONTROL AND PROTECTION, STANDARD 701701	EACH	1

THE EMERGENCY VEHICLE PREEMPTION EQUIPMENT FOR THIS PROJECT SHALL BE "OPTICOM" TO MATCH THE EXISTING SYSTEM AND MUNICIPAL REQUIREMENTS

RESTORATION OF WORK AREA. RESTORATION OF THE TRAFFIC SIGNAL WORK AREA SHALL BE INCIDENTAL TO THE RELATED PAY ITEM SUCH AS FOUNDATION, CONDUIT, HANDHOLE, TRENCH AND BACKFILL, ETC., AND NO EXTRA COMPENSATION SHALL BE ALLOWED. ALL ROADWAY SURFACES SUCH AS SHOULDERS, MEDIANS, SIDEWALKS, PAVEMENT, ETC. SHALL BE REPLACED IN KIND. ALL DAMAGE TO MOWED LAWNS SHALL BE REPLACED WITH AN APPROVED SOD, AND ALL DAMAGE TO UNMOWED FIELDS SHALL BE SEEDED IN ACCORDANCE WITH STANDARD SPECIFICATIONS 252 AND 250 RESPECTIVELY.

INSTALLATION OF EMERGENCY VEHICLE PREEMPTION

CHRISTOPHER B. BURKE ENGINEERING LTD.
 9575 West Higgins Road, Suite 600
 Rosemont, Illinois 60018
 (847) 823-0500

I.D.O.T. TRAFFIC SIGNAL INSTALLATION ELECTRICAL SERVICE REQUIREMENTS

TYPE	NO. OF LAMPS	WATTAGE	% OPERATION	TOTAL WATTAGE
		X INCAND. LED		
SIGNAL (RED)	14	135	0.50	945.00
(YELLOW)	14	135	0.25	472.50
(GREEN)	14	135	0.25	472.50
ARROW	8	135	0.10	108.00
PED. SIGNAL	4	90	1.00	360.00
CONTROLLER	1	100	1.00	100.00
ILLUM. SIGN		252	0.05	-
FLASHER			0.50	
ENERGY COSTS TO: TOTAL =				2458.00

FOUNDATION (DEPTH)	FT. (m)	CABLE SLACK	FT. (m)	VERTICAL	FT. (m)
TYPE A - POST	4 (1.2)	HANDHOLE	6.5 (2.0)	ALL FOUNDATIONS	3.5 (1.0)
D - CONTROLLER	4 (1.2)	DOUBLE HANDHOLE	13 (4.0)	MAST ARM (L) POLE	20'-H-2=
E - M. ARM POLE		SIGNAL POST	2 (1.0)		(6m+L-0.6m)=
24" (600mm)	10 (3.0)	CONTROLLER CAB.	1 (0.5)	BRACKET MOUNTED	13 (4.0)
30" (750mm)	15 (4.6)	FIBER OPTIC	13 (4.0)	PED. PUSHBUTTON	4 (1.2)
36" (900mm)	15 (4.6)	ELECTRIC SERVICE	1 (0.5)	ELECTRIC SERVICE	13.5 (4.1)
		GROUND CABLE	1 (0.5)	SERVICE TO GROUND	13.5 (4.1)
				POST MOUNTED	6 (1.8)

ILLINOIS DEPARTMENT OF TRANSPORTATION
 DIVISION OF HIGHWAY/DISTRICT 1
 201 WEST CENTER COURT/SCHAUMBURG, ILLINOIS 60196-1096
 ENERGY SUPPLY: CONTACT: _____
 PHONE: _____
 COMPANY: _____

REVISIONS

NAME	DATE
CBBEL	6-27-08

ILLINOIS DEPARTMENT OF TRANSPORTATION

CABLE PLAN
PHASE DESIGNATION DIAGRAM
SCHEDULE OF QUANTITIES

CRAWFORD AV & 107TH ST

SCALE: VERT. NONE
 HORIZ. _____
 DATE: 2-8-90

DRAWN BY: _____
 CHECKED BY: _____

N:\okLawn\080363 VTR-affio\VP_Pulsaki-107th.dgn