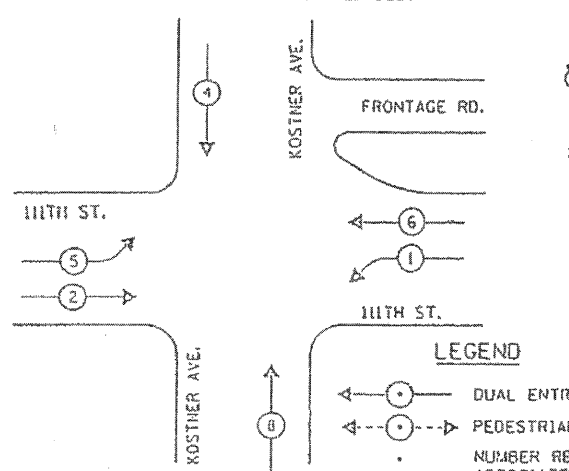


CONTROLLER SEQUENCE

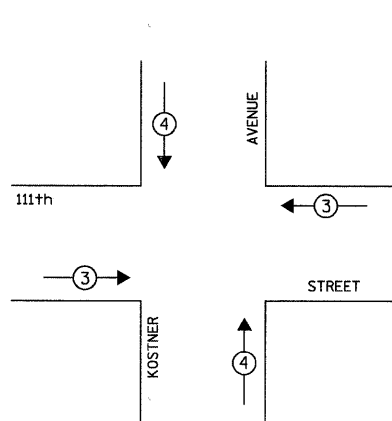
REFERRING TO STANDARD 85T001, THE VEHICULAR AND PEDESTRIAN PHASE USED ARE DESIGNATED BELOW.



PHASE DESIGNATION DIAGRAM

DUAL ENTRY - ALL LEGS
PROTECTED/PERMITTED LEFT TURN PHASING

EMERGENCY VEHICLE PREEMPTION SEQUENCE



EMERGENCY VEHICLE PREEMPTOR	3	4
MOVEMENT	←	↑

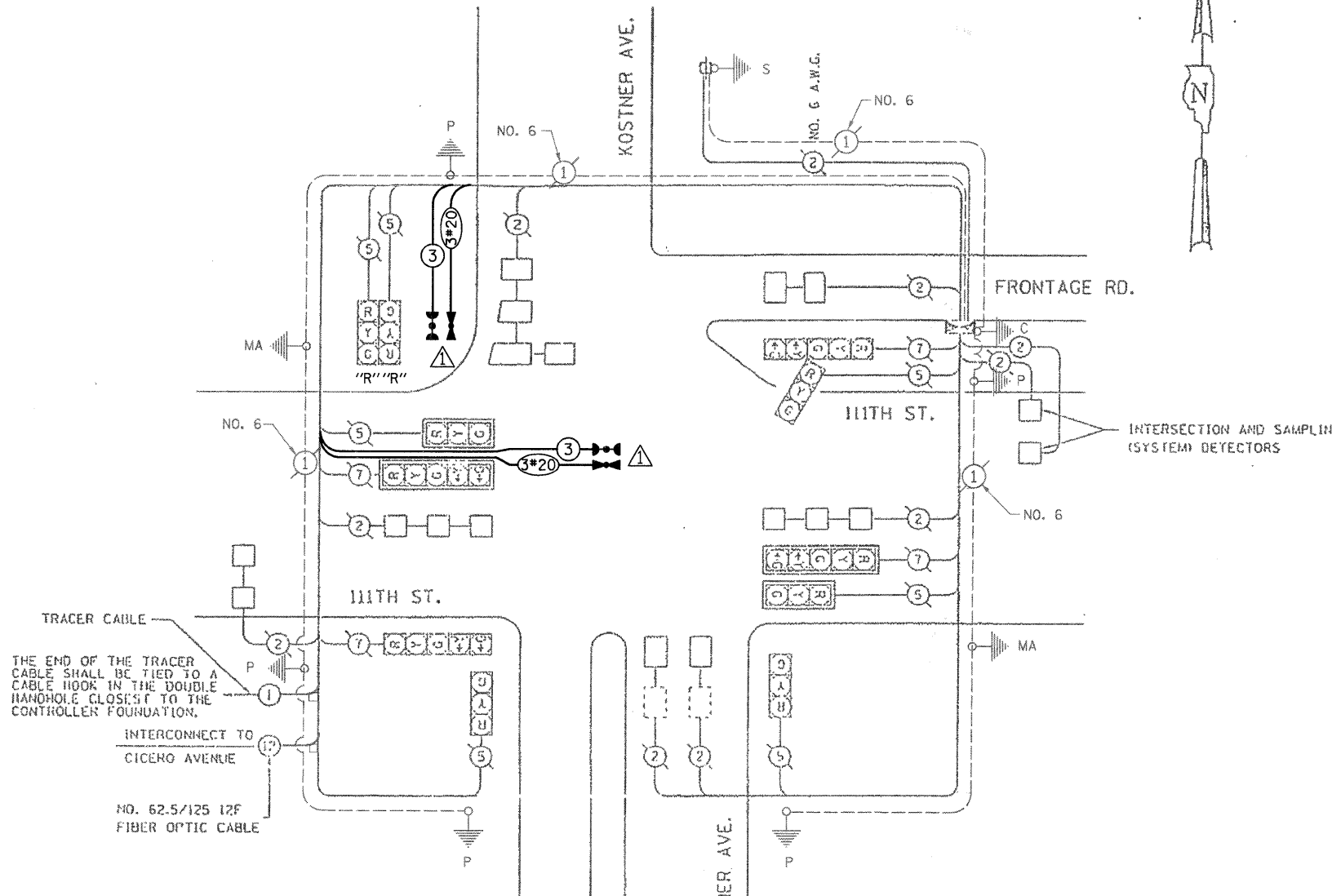
SCHEDULE OF QUANTITIES

ITEM	UNIT	TOTAL
MAINTENANCE OF EXISTING TRAFFIC SIGNAL INSTALLATION	EACH	1
ELECTRIC CABLE IN CONDUIT, SIGNAL, NO. 14 3C	FOOT	355
TRAFFIC SIGNAL POST, GALVANIZED STEEL, 18 FT.	EACH	1
LIGHT DETECTOR	EACH	2
LIGHT DETECTOR AMPLIFIER	EACH	1
RELOCATE EXISTING SIGNAL HEAD	EACH	1
MODIFY EXISTING CONTROLLER CABINET	EACH	1
REMOVE EXISTING TRAFFIC SIGNAL EQUIPMENT	EACH	1
ELECTRIC CABLE IN CONDUIT, NO. 20 3C, TWISTED, SHIELDED	FOOT	355
TRAFFIC CONTROL AND PROTECTION, STANDARD 701701	EACH	1

FOUNDATION (DEPTH)	FT. (m)	CABLE SLACK	FT. (m)	VERTICAL	FT. (m)
TYPE A - POST	4 (1.2)	HANDHOLE	6.5 (2.0)	ALL FOUNDATIONS	3.5 (1.0)
D - CONTROLLER	4 (1.2)	DOUBLE HANDHOLE	13 (4.0)	MAST ARM (L) POLE	20' 4L-2"
E - M. ARM POLE		SIGNAL POST	2 (0.6)		(6m x 1 - 0.6m)
24" (600mm)	10 (3.0)	CONTROLLER CAB.	1 (0.5)	BRACKET MOUNTED	13 (4.0)
30" (750mm)	15 (4.6)	FIBER OPTIC	13 (4.0)	PED. PUSHBUTTON	4 (1.2)
36" (900mm)	15 (4.6)	ELECTRIC SERVICE	1 (0.5)	ELECTRIC SERVICE	13.5 (4.1)
		GROUND CABLE	1 (0.5)	SERVICE TO GROUND	13.5 (4.1)
				POST MOUNTED	6 (1.8)

CABLE DIAGRAM

NOT TO SCALE



RESTORATION OF WORK AREA. RESTORATION OF THE TRAFFIC SIGNAL WORK AREA SHALL BE INCIDENTAL TO THE RELATED PAY ITEM SUCH AS FOUNDATION, CONDUIT, HANDHOLE, TRENCH AND BACKFILL, ETC., AND NO EXTRA COMPENSATION SHALL BE ALLOWED. ALL ROADWAY SURFACES SUCH AS SHOULDERS, MEDIANS, SIDEWALKS, PAVEMENT, ETC. SHALL BE REPLACED IN KIND. ALL DAMAGE TO MOWED LAWNS SHALL BE REPLACED WITH AN APPROVED SOD, AND ALL DAMAGE TO UNMOWED FIELDS SHALL BE SEEDED IN ACCORDANCE WITH STANDARD SPECIFICATIONS 252 AND 250 RESPECTIVELY.

THE EMERGENCY VEHICLE PREEMPTION EQUIPMENT FOR THIS PROJECT SHALL BE "OPTICOM" TO MATCH THE EXISTING SYSTEM AND MUNICIPAL REQUIREMENTS

CABLE PLAN LEGEND

- 8' TRAFFIC SIGNAL SECTION
- 12' TRAFFIC SIGNAL SECTION
- PEDESTRIAN SIGNAL
- EXISTING PEDESTRIAN SIGNAL
- PROPOSED CONTROLLER CABINET
- EXISTING SERVICE INSTALLATION
- EXISTING VEHICLE DETECTOR, INDUCTION LOOP
- PROPOSED VEHICLE DETECTOR, INDUCTION LOOP
- PROPOSED PUSHBUTTON DETECTOR
- EXISTING PUSHBUTTON DETECTOR
- DENOTES NUMBER OF CONDUCTORS. (NEW) ALL LOOP DETECTOR CABLE TO BE SHIELDED. ALL CABLE NO. 14 EXCEPT AS INDICATED.
- INDICATES EXISTING CABLE
- SIGNAL FACE WITH BACKPLATE.
- 'P' INDICATES PROGRAMMED HEAD.
- EXISTING TRAFFIC SIGNAL SECTION

EMERGENCY VEHICLE LIGHT DETECTOR CONFIRMATION BEACON
"R" RELOCATE

INSTALLATION OF EMERGENCY VEHICLE PREEMPTION
CHRISTOPHER B. BURKE ENGINEERING LTD.
9575 West Higgins Road, Suite 600
Rosemont, Illinois 60018
(847) 823-0500

REVISIONS	
NAME	DATE
CBBEL	6-27-08

ILLINOIS DEPARTMENT OF TRANSPORTATION
CABLE DIAGRAM
PHASE DESIGNATION DIAGRAM
SCHEDULE OF QUANTITIES
111TH STREET AT KOSTNER AVE.
SCALE: NOT TO SCALE
DATE: 1-18-97
DRAWN BY: SO
CHECKED BY: PKI

N:\ockLawn\080363\Traffic\VP\111th-Kostner.dgn

I.D.O.T.
TRAFFIC SIGNAL INSTALLATION
ELECTRICAL SERVICE REQUIREMENTS

TYPE	NO. OF LAMPS	WATTAGE	WATTAGE	TOTAL WATTAGE
SIGNAL (RED)	11	135	0.50	742.50
(YELLOW)	11	135	0.25	371.25
(GREEN)	11	135	0.25	371.25
ARROW	8	135	0.10	108.00
PED. SIGNAL	-	90	1.00	-
CONTROLLER	1	100	1.00	100.00
ILLUM. SIGN	-	252	0.05	-
FLASHER			0.50	
ENERGY COSTS TO:				TOTAL = 1693.00

ILLINOIS DEPARTMENT OF TRANSPORTATION
DIVISION OF HIGHWAY/DISTRICT 1
201 WEST CENTER COURT/SCHAUMBURG, ILLINOIS 60196-1096
ENERGY SUPPLY: CONTACT:
PHONE:
COMPANY:

GANDHI AND ASSOCIATES, INC.
ENGINEERS AND PLANNERS
8051 N. NORTHWEST HIGHWAY
SUITE 300
CHICAGO, ILLINOIS 60631 TEL: 773-714-590