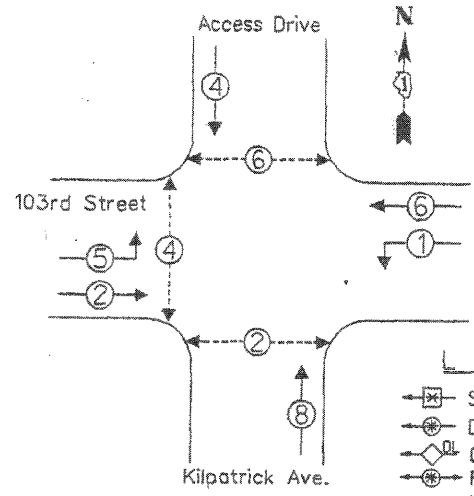


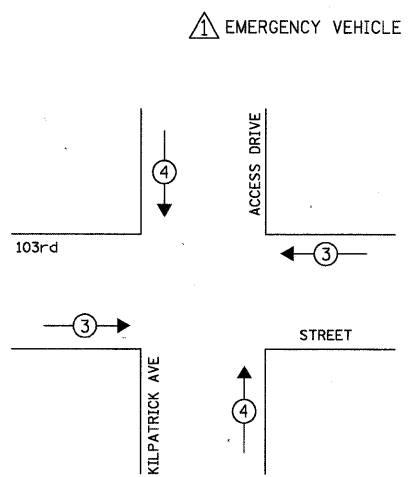
CONTROLLER SEQUENCE



LEGEND

- SINGLE ENTRY PHASE
- DUAL ENTRY PHASE
- OVERLAP
- PEDESTRIAN PHASE
- * NUMBER REFERS TO ASSOCIATED PHASE.

PHASE DESIGNATION DIAGRAM



EMERGENCY VEHICLE PREEMPTOR	3	4
MOVEMENT	← →	↑ ↓

CABLE PLAN LEGEND

- | | | |
|--|--|---|
| | | 8' 120MM TRAFFIC SIGNAL SECTION |
| | | 12' 130MM TRAFFIC SIGNAL SECTION |
| | | 12' 130MM PEDESTRIAN SIGNAL SECTION |
| | | CONTROLLER CABINET |
| | | SERVICE INSTALLATION |
| | | VEHICLE DETECTOR, INDUCTION LOOP |
| | | MAGNETIC DETECTOR |
| | | EMERGENCY VEHICLE LIGHT DETECTOR |
| | | CONFIRMATION BEACON |
| | | PUSHBUTTON DETECTOR |
| | | DENOTES NUMBER OF CONDUCTORS. ALL CABLE NO. 14 EXCEPT AS INDICATED. ALL LOOP DETECTOR CABLE TO BE SHIELDED. |
| | | SIGNAL FACE WITH BACKPLATE |
| | | "P" INDICATES PROGRAMMED HEAD |
| | | GROUND ROD AT HANDHOLE OR CONTROLLER |
| | | GROUND ROD AT POST OR MAST ARM POLE |
| | | GROUND ROD AT ELECTRIC SERVICE INSTALLATION |
| | | GROUND ROD EXISTING TO BE REUSED |
| | | GROUND CABLE IN CONDUIT, NO. 6 SOLID COPPER (GREEN) |
| | | NO. 62.5/125 MM 12F & SM 12F. FIBER OPTIC CABLE |
| | | NO. 14 1C TRACER CABLE |

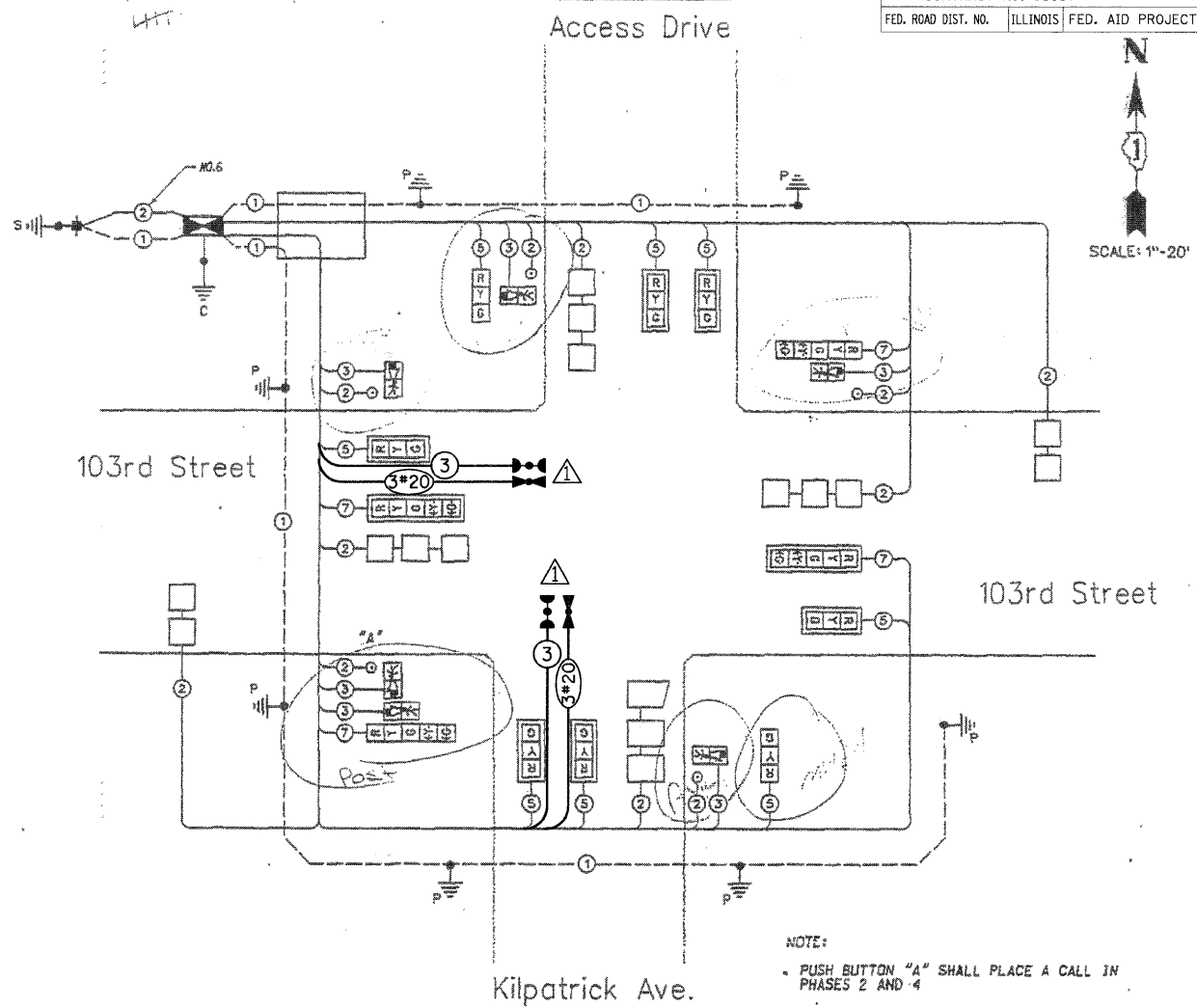
NOTE: ALL NEW GROUND RODS SHALL BE 3/4" X 10'-0" LONG COPPER CLAD. THE COST SHALL BE INCIDENTAL TO THE COST OF INSTALLATION.

EMERGENCY VEHICLE LIGHT DETECTOR CONFIRMATION BEACON

THE EMERGENCY VEHICLE PREEMPTION EQUIPMENT FOR THIS PROJECT SHALL BE "OPTICOM" TO MATCH THE EXISTING SYSTEM AND MUNICIPAL REQUIREMENTS

RESTORATION OF WORK AREA. RESTORATION OF THE TRAFFIC SIGNAL WORK AREA SHALL BE INCIDENTAL TO THE RELATED PAY ITEM SUCH AS FOUNDATION, CONDUIT, HANDHOLE, TRENCH AND BACKFILL, ETC., AND NO EXTRA COMPENSATION SHALL BE ALLOWED. ALL ROADWAY SURFACES SUCH AS SHOULDERS, MEDIANS, SIDEWALKS, PAVEMENT, ETC. SHALL BE REPLACED IN KIND. ALL DAMAGE TO MOWED LAWNS SHALL BE REPLACED WITH AN APPROVED SOD, AND ALL DAMAGE TO UNMOWED FIELDS SHALL BE SEEDED IN ACCORDANCE WITH STANDARD SPECIFICATIONS 252 AND 250 RESPECTIVELY.

CABLE PLAN



NOTE: PUSH BUTTON "A" SHALL PLACE A CALL IN PHASES 2 AND 4

THE TRAFFIC SIGNAL CONTROL EQUIPMENT FOR THIS PROJECT SHALL BE "ECONDLITE" TO MATCH THE EXISTING ADJACENT SYSTEM.

SCHEDULE OF QUANTITIES

ITEM	UNIT	TOTAL
MAINTENANCE OF EXISTING TRAFFIC SIGNAL INSTALLATION	EACH	1
ELECTRIC CABLE IN CONDUIT, SIGNAL, NO. 14 3C	FOOT	257
LIGHT DETECTOR	EACH	2
LIGHT DETECTOR AMPLIFIER	EACH	1
MODIFY EXISTING CONTROLLER CABINET	EACH	1
ELECTRIC CABLE IN CONDUIT, NO. 20 3C, TWISTED, SHIELDED	FOOT	257
TRAFFIC CONTROL AND PROTECTION, STANDARD 701701	EACH	1

TYPE	NO. LAMPS	WATTAGE	% OPERATIONS	TOTAL WATTAGE
SIGNAL (RED)	10	11	0.50	55
(YELLOW)	10	22	0.25	55
(GREEN)	10	15	0.25	37.5
ARROW (RED)	9	9	0.50	
(YELLOW)	10	10	0.25	
(GREEN)	11	11	0.25	
(YELLOW)	4	10	0.10	4
(GREEN)	4	11	0.10	4.5
PED. SIGNAL	6	7	1.00	42
CONTROLLER	1	100	1.00	100.00
ILLUM. SIGN			0.50	
FLASHER LED			0.50	
TOTAL				298

FOUNDATION (DEPTH)	(FT.)	CABLE SLACK	(FT.)	VERTICAL	(FT.)
TYPE A - POST	4	HANDHOLE	6.5	ALL FOUNDATIONS	3.5
D - CONTROLLER	4	DOUBLE HANDHOLE	13	MAST ARM (L) POLE	20' ± L-2 =
E - M ARM POLE		SIGNAL POST	2	BRACKET MOUNTED	15
24"	10	CONTROLLER CAB.	1	PED. PUSHBUTTON	4
30"	15	FIBER OPTIC	13	ELECTRIC SERVICE	13.5
		ELECTRIC SERVICE	1	SERVICE TO GROUND	13.5
		GROUND CABLE	1	POST MOUNTED	6

ENERGY COSTS - BILLED TO: VILLAGE OF OAKLAWN (ADDRESS)

ENERGY SUPPLY - CONTACT: GARY BROSEAU (708) 396-3434 (PHONE) COMPANY: COMED

INSTALLATION OF EMERGENCY VEHICLE PREEMPTION

CHRISTOPHER B. BURKE ENGINEERING LTD.
9575 West Higgins Road, Suite 600
Rosemont, Illinois 60018
(847) 823-0500

EDWIN HANCOCK ENGINEERING COMPANY
CONSULTING ENGINEERS
9933 RODSEVELT ROAD WESTCHESTER, ILLINOIS 60154-2780
(708) 865-0300 ESTABLISHED 1911

prepared by METRO for EDWIN HANCOCK COMPANY
METRO TRANSPORTATION GROUP, INC.
TRANSPORTATION, PLANNING, ENGINEERING, AND DESIGN
1500 GREENBROOK BLVD. HANOVER PARK, IL 60139
PH (630) 215-1000



CABLE PLAN, PHASE DESIGNATION DIAGRAM AND SCHEDULE OF QUANTITIES
103rd STREET at KILPATRICK AVE.
OAKLAWN, ILLINOIS

SCALE: 1"=20'
DRAWN BY: [Signature]
BOOK NO.: 1385
DATE: 12-7-01
REVISION: 2-8-02
SHEET 70 OF 105