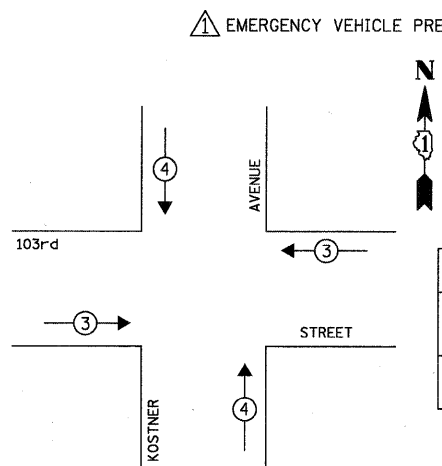


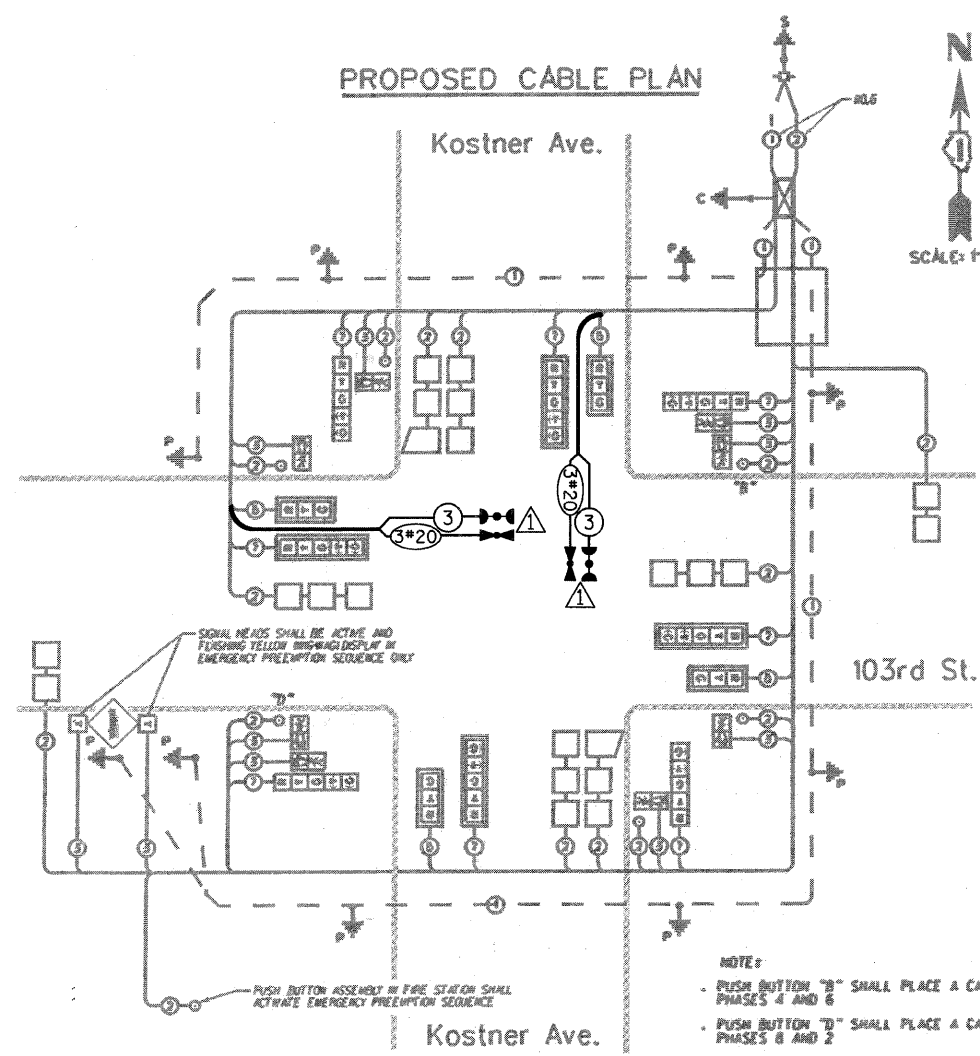
LEGEND
 * DUAL ENTRY PHASE
 NUMBER REFERS TO ASSOCIATED PHASE
 PHASE DESIGNATION DIAGRAM



PROPOSED EMERGENCY VEHICLE PREEMPTORS		
EMERGENCY VEHICLE PREEMPTOR	3	4
MOVEMENT	← →	↑ ↓

CABLE PLAN LEGEND

- | | |
|--|---|
| | 8" (200MM) TRAFFIC SIGNAL SECTION |
| | 12" (300MM) PEDESTRIAN SIGNAL SECTION |
| | 12" (300MM) PEDESTRIAN SIGNAL SECTION |
| | CONTROLLER CABINET |
| | SERVICE INSTALLATION |
| | VEHICLE DETECTOR, INDUCTION LOOP |
| | MAGNETIC DETECTOR |
| | EMERGENCY VEHICLE LIGHT DETECTOR |
| | CONFIRMATION BEACON |
| | PUSHBUTTON DETECTOR |
| | DENOTES NUMBER OF CONDUCTORS. ALL CABLE NO. 14 EXCEPT AS INDICATED. ALL LOOP DETECTOR CABLE TO BE SHIELDED. |
| | SIGNAL FACE WITH BACKPLATE
*P INDICATES PROGRAMMED HEAD |
| | GROUND ROD AT HANDHOLE OR CONTROLLER |
| | GROUND ROD AT POST OR MAST ARM POLE |
| | GROUND ROD AT ELECTRIC SERVICE INSTALLATION |
| | GROUND ROD EXISTING TO BE REUSED |
| | GROUND CABLE IN CONDUIT, NO. 6 SOLID COPPER GREEN |
| | NO. 62.5/125 MM 12F & 5M 12F, FIBER OPTIC CABLE |
| | NO. 14 IC TRACER CABLE |
- NOTE: ALL NEW GROUND RODS SHALL BE 3/4" X 18"-0" LONG COPPER CLAD. THE COST SHALL BE INCIDENTAL TO THE COST OF INSTALLATION.



NOTE:
 - PUSH BUTTON "B" SHALL PLACE A CALL IN PHASES 4 AND 6
 - PUSH BUTTON "D" SHALL PLACE A CALL IN PHASES 8 AND 2

I.D.O.T. TRAFFIC SIGNAL INSTALLATION ELECTRICAL SERVICE REQUIREMENTS					TOTAL WATTAGE
TYPE	NO. OF LAMPS	WATTAGE (INCAND.)	LED	% OPERATION	
SIGNAL (RED)	12	17	0.50		102.00
(YELLOW)	12	25	0.25		75.00
(GREEN)	12	15	0.25		45.00
ARROW	8	12	0.10		9.60
PED. SIGNAL	8	25	1.00		200.00
CONTROLLER	1	100	1.00		100.00
ILLUM. SIGN		25	0.05		
FLASHER			0.50		
ENERGY COSTS TO:					TOTAL = 531.60

SCHEDULE OF QUANTITIES

ITEM	UNIT	TOTAL
MAINTENANCE OF EXISTING TRAFFIC SIGNAL INSTALLATION	EACH	1
ELECTRIC CABLE IN CONDUIT, SIGNAL, NO. 14 3C	FOOT	543
LIGHT DETECTOR	EACH	2
LIGHT DETECTOR AMPLIFIER	EACH	1
MODIFY EXISTING CONTROLLER CABINET	EACH	1
ELECTRIC CABLE IN CONDUIT, NO. 20 3C, TWISTED, SHIELDED	FOOT	543
TRAFFIC CONTROL AND PROTECTION, STANDARD 701701	EACH	1

FOUNDATION (DEPTH)	FT. (m)	CABLE SLACK	FT. (m)	VERTICAL	FT. (m)
TYPE A - POST	4 (1.2)	HANDHOLE	6.5 (2.0)	ALL FOUNDATIONS	3.5 (1.0)
D - CONTROLLER	4 (1.2)	DOUBLE HANDHOLE	13 (4.0)	MAST ARM (L) POLE	20'-H-2"
E - M. ARM POLE		SIGNAL POST	2 (0.6)		16m-H-0.6m
24" (600mm)	10 (3.0)	CONTROLLER CAB.	1 (0.5)	BRACKET MOUNTED	13 (4.0)
30" (750mm)	15 (4.6)	FIBER OPTIC	13 (4.0)	PED. PUSHBUTTON	4 (1.2)
36" (900mm)	15 (4.6)	ELECTRIC SERVICE	1 (0.5)	ELECTRIC SERVICE	13.5 (4.1)
		GROUND CABLE	1 (0.5)	SERVICE TO GROUND	13.5 (4.1)
				POST MOUNTED	6 (1.8)

VILLAGE OF OAK LAWN
 9446 SOUTH RAYMOND AVENUE
 OAK LAWN, ILLINOIS 60453-2449
 ENERGY SUPPLY: CONTACT: GARY BROUSSEAU
 PHONE: (708) 396-3434
 COMPANY: COMED

THE EMERGENCY VEHICLE PREEMPTION EQUIPMENT FOR THIS PROJECT SHALL BE "OPTICOM" TO MATCH THE EXISTING SYSTEM AND MUNICIPAL REQUIREMENTS

RESTORATION OF WORK AREA. RESTORATION OF THE TRAFFIC SIGNAL WORK AREA SHALL BE INCIDENTAL TO THE RELATED PAY ITEM SUCH AS FOUNDATION, CONDUIT, HANDHOLE, TRENCH AND BACKFILL, ETC., AND NO EXTRA COMPENSATION SHALL BE ALLOWED. ALL ROADWAY SURFACES SUCH AS SHOULDERS, MEDIANS, SIDEWALKS, PAVEMENT, ETC. SHALL BE REPLACED IN KIND. ALL DAMAGE TO MOWED LAWNS SHALL BE REPLACED WITH AN APPROVED SOD, AND ALL DAMAGE TO UNMOWED FIELDS SHALL BE SEEDED IN ACCORDANCE WITH STANDARD SPECIFICATIONS 252 AND 250 RESPECTIVELY.

INSTALLATION OF EMERGENCY VEHICLE PREEMPTION
CHRISTOPHER B. BURKE ENGINEERING LTD.
 9575 West Higgins Road, Suite 600
 Rosemont, Illinois 60018
 (847) 823-0500

EDWIN HANCOCK ENGINEERING COMPANY
 CONSULTING ENGINEERS
 9933 ROOSEVELT ROAD WESTCHESTER, ILLINOIS 60154-2780
 (708) 865-0300 ESTABLISHED 1911

prepared by METRO for EDWIN HANCOCK COMPANY
 METRO TRANSPORTATION GROUP, INC.
 TRANSPORTATION, PLANNING, ENGINEERING, AND DESIGN
 1200 GREENBROOK BLVD. HANOVER PARK, IL 60138
 PH# (630) 213-1000



CABLE PLAN AND SCHEDULE OF QUANTITIES
 103rd STREET at KOSTNER AVE.
 OAKLAWN, ILLINOIS

SCALE: CBBEL 6-27-08	SHEET 73
REVISION: 2-8-02	OF 105
DATE: 12-7-01	
E.N.E. NO. 1640-00-25701	

N:\OakLawn\080363\VT-offic\103rd-Kostner.dgn