

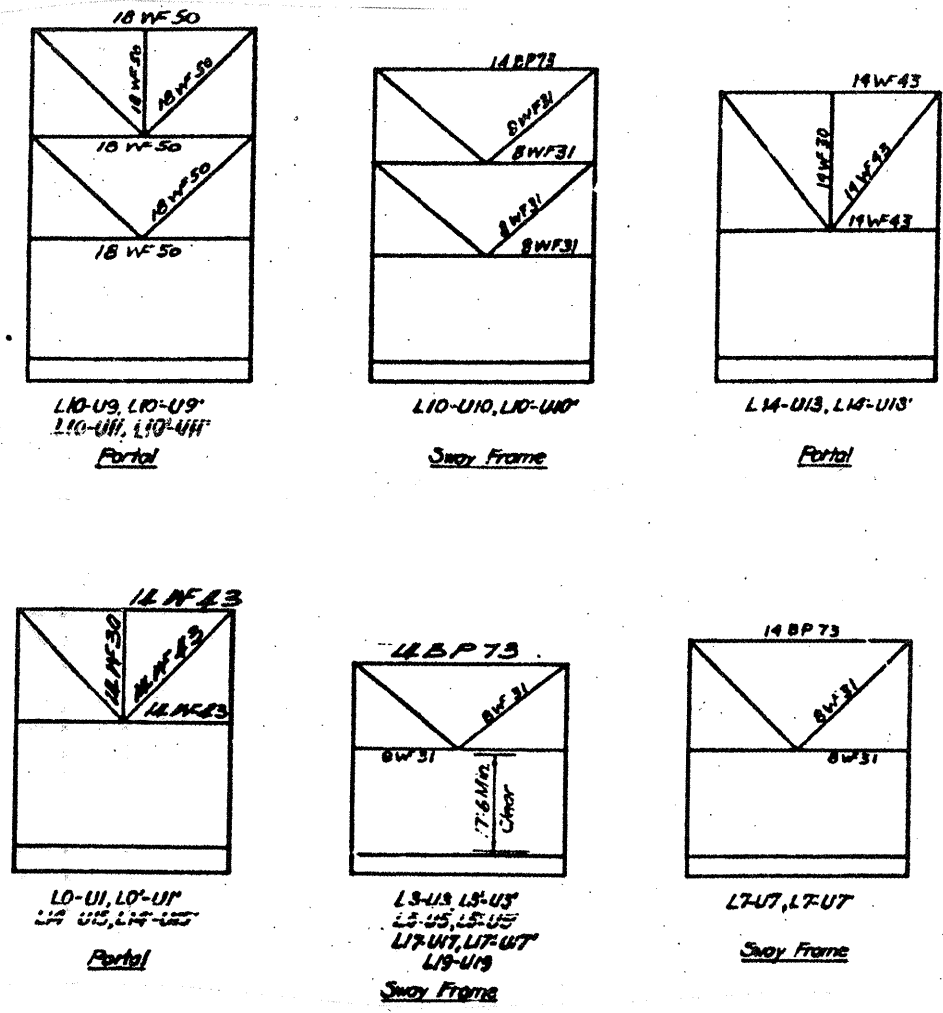
**TRUSS MEMBER LENGTHS AND SHAPES**

One half of truss shown, other half similar by symmetry

Member	Length (ft.)	Shape
L <sub>0</sub> -L <sub>2</sub>	53.01	W14
L <sub>2</sub> -L <sub>4</sub>	53.01	W14
L <sub>4</sub> -L <sub>6</sub>	53.01	W14
L <sub>6</sub> -L <sub>8</sub>	53.01	W14
L <sub>8</sub> -L <sub>10</sub>	53.01	W14
L <sub>10</sub> -L <sub>12</sub>	53.01	W14
L <sub>12</sub> -L <sub>14</sub>	53.01	W14
L <sub>14</sub> -L <sub>16</sub>	53.01	W14
L <sub>16</sub> -L <sub>18</sub>	53.01	W14
L <sub>18</sub> -L <sub>19</sub>	53.01	W14
U <sub>1</sub> -U <sub>3</sub>	53.01	W14
U <sub>3</sub> -U <sub>5</sub>	53.01	W14
U <sub>5</sub> -U <sub>7</sub>	53.08	W14
U <sub>7</sub> -U <sub>9</sub>	54.12	W14
U <sub>9</sub> -U <sub>11</sub>	53.01	W14
U <sub>11</sub> -U <sub>13</sub>	54.59	W14
U <sub>13</sub> -U <sub>15</sub>	53.24	W14
U <sub>15</sub> -U <sub>17</sub>	53.01	W14
U <sub>17</sub> -U <sub>19</sub>	53.01	W14
L <sub>0</sub> -U <sub>1</sub>	43.48	W14
U <sub>1</sub> -L <sub>2</sub>	44.33	W14
L <sub>2</sub> -U <sub>3</sub>	43.48	W14
U <sub>3</sub> -L <sub>4</sub>	44.33	W14
L <sub>4</sub> -U <sub>5</sub>	43.48	W14
U <sub>5</sub> -L <sub>6</sub>	44.33	W14
L <sub>6</sub> -U <sub>7</sub>	46.71	W14
U <sub>7</sub> -L <sub>8</sub>	47.59	15" x 15" Box
L <sub>8</sub> -U <sub>9</sub>	57.00	W14

Member	Length (ft.)	Shape
U <sub>9</sub> -L <sub>10</sub>	57.94	15" x 18" Box
L <sub>10</sub> -U <sub>11</sub>	57.00	15" x 18" Box
U <sub>11</sub> -L <sub>12</sub>	57.99	W14
L <sub>12</sub> -U <sub>13</sub>	46.71	15" x 15" Box
U <sub>13</sub> -L <sub>14</sub>	47.59	W14
L <sub>14</sub> -U <sub>15</sub>	43.48	W14
U <sub>15</sub> -L <sub>16</sub>	44.33	W14
L <sub>16</sub> -U <sub>17</sub>	43.48	W14
U <sub>17</sub> -L <sub>18</sub>	44.33	W14
L <sub>18</sub> -U <sub>19</sub>	43.48	W14
L <sub>1</sub> -U <sub>1</sub>	35.00	W14
L <sub>2</sub> -U <sub>2</sub>	35.00	W14
L <sub>3</sub> -U <sub>3</sub>	35.00	W14
L <sub>4</sub> -U <sub>4</sub>	35.00	W14
L <sub>5</sub> -U <sub>5</sub>	35.00	W14
L <sub>6</sub> -U <sub>6</sub>	37.00	W14
L <sub>7</sub> -U <sub>7</sub>	39.00	W14
L <sub>8</sub> -U <sub>8</sub>	45.00	W14
L <sub>9</sub> -U <sub>9</sub>	51.00	W14
L <sub>10</sub> -U <sub>10</sub>	51.00	W14
L <sub>11</sub> -U <sub>11</sub>	51.00	W14
L <sub>12</sub> -U <sub>12</sub>	45.00	W14
L <sub>13</sub> -U <sub>13</sub>	39.00	W14
L <sub>14</sub> -U <sub>14</sub>	37.00	W14
L <sub>15</sub> -U <sub>15</sub>	35.00	W14
L <sub>16</sub> -U <sub>16</sub>	35.00	W14
L <sub>17</sub> -U <sub>17</sub>	35.00	W14
L <sub>18</sub> -U <sub>18</sub>	35.00	W14
L <sub>19</sub> -U <sub>19</sub>	35.00	W14

Bottom Truss Lateral Diagonals are W8x31  
 Top Truss Laterals are W14x73  
 Top Truss Lateral Diagonals are W14x30



**ELEVATION OF PORTALS AND SWAY FRAMES**  
 Scale: 1" = 20'-0"

TRUSS DATA  
 FAP RTE 46 SEC (1-BD)BP  
 LASALLE COUNTY  
 STA 204+67.75  
 SN 050-0079