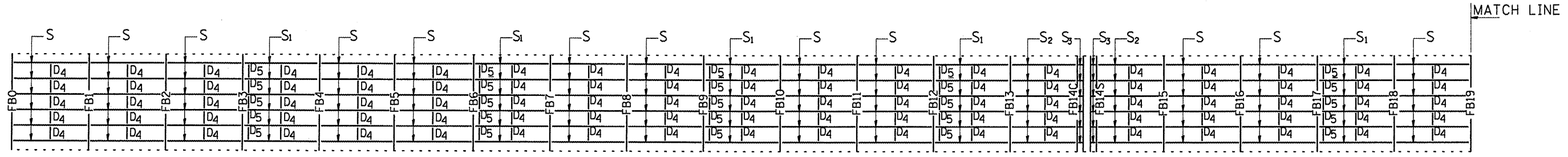
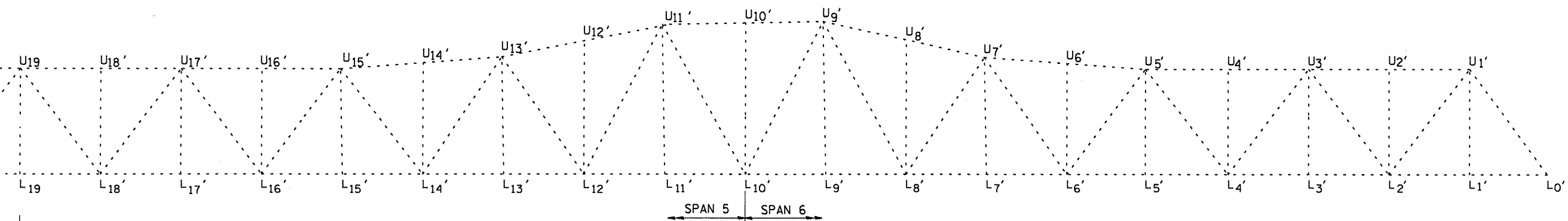


TRUSS ELEVATION - NORTH HALF

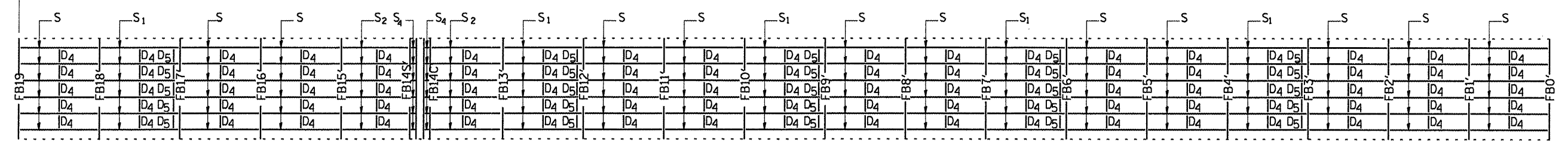


PLAN OF BOTTOM CHORD - NORTH HALF

(SHOWING FLOOR BEAMS, STRINGERS AND DIAPHRAGMS)



TRUSS ELEVATION - SOUTH HALF



PLAN OF BOTTOM CHORD - SOUTH HALF

(SHOWING FLOOR BEAMS, STRINGERS AND DIAPHRAGMS)

FRAMING PLAN
SPANS 4, 5 AND 6
FAP RTE 46 SEC (1-BD)BP
LASALLE COUNTY
STA 204+67.75
SN 050-0079

FILE NAME =	USER NAME = woodshankr1	DESIGNED = RON WOODSHANK	REVISED =	STATE OF ILLINOIS DEPARTMENT OF TRANSPORTATION	FOR INFORMATION ONLY	F.A.P. RTE.	SECTION	COUNTY	TOTAL SHEETS	SHEET NO.	
en:\pwwork\pwwid01\WOODSHANKR1\dms29379	d366854-sht-details.dgn	DRAWN = RON WOODSHANK	REVISED =			46	(1-BD)BP	LASALLE	38	22	
PLOT SCALE = 1/8" = 1'-0"		CHECKED =	REVISED =			CONTRACT NO. 66854					
PLOT DATE = Oct 15, 2008 - 07:06:45 AM		DATE =	REVISED =			FED. ROAD DIST. NO. ILLINOIS FED. AID PROJECT					
				SCALE: _____ SHEET NO. 14 OF 30 SHEETS		STA. 193+08.08 TO STA. 216+13.82					