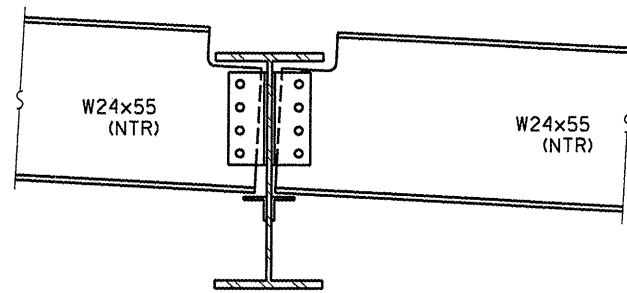
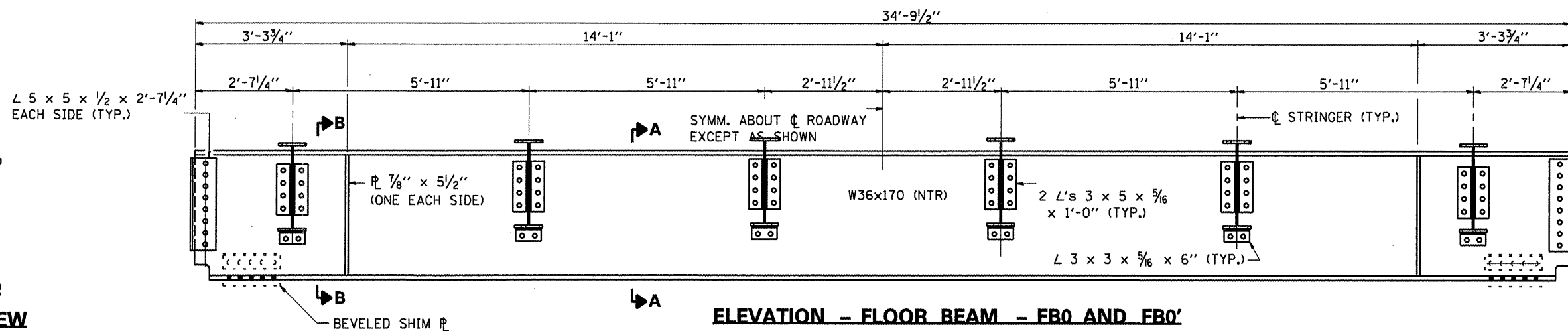


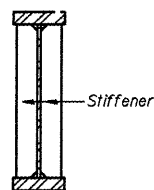
**END VIEW**  
SHOWING WEST END  
(EAST END OPPOSITE HAND)



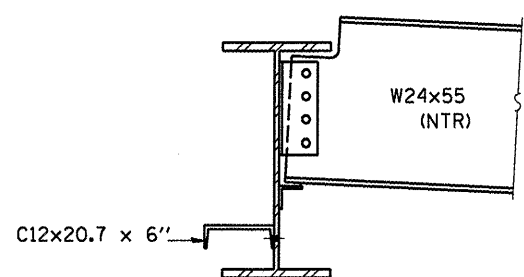
**SECTION A-A**



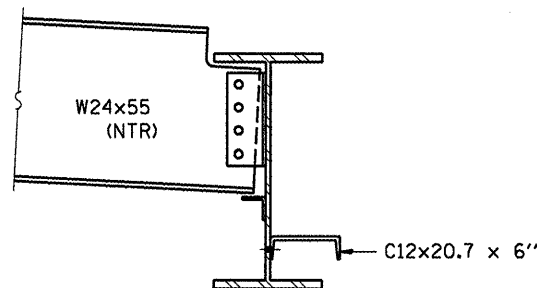
**END VIEW**  
SHOWING WEST END  
(EAST END OPPOSITE HAND)



**SECTION B-B**



**SECTION A-A**  
(FBO - LOOKING EAST)



**SECTION A-A**  
(FBO' - LOOKING EAST)

**FLOOR BEAM DETAILS**  
**FAP RTE 46 SEC (1-BD)BP**  
**LASALLE COUNTY**  
**STA 204+67.75**  
**SN 050-0079**

FILE NAME =	USER NAME = woodshankr1	DESIGNED = RON WOODSHANK	REVISED =	<b>STATE OF ILLINOIS</b> <b>DEPARTMENT OF TRANSPORTATION</b>	<b>FOR INFORMATION ONLY</b>	F.A.P. RTE. = 46	SECTION = (1-BD)BP	COUNTY = LASALLE	TOTAL SHEETS = 38	SHEET NO. = 24	
cd:\pw_work\FW100T\WOODSHANKR1\dms29370	d366854-sht-details.dgn	DRAWN = RON WOODSHANK	REVISED =			SCALE: _____	SHEET NO. 16 OF 30 SHEETS	STA. 193+08.08 TO STA. 216+13.82	FED. ROAD DIST. NO. = ILLINOIS FED. AID PROJECT	CONTRACT NO. 66854	
	PLOT SCALE = 1/8\"/>										
	PLOT DATE = Oct 15, 2008 - 07:06:57 AM	DATE =	REVISED =								