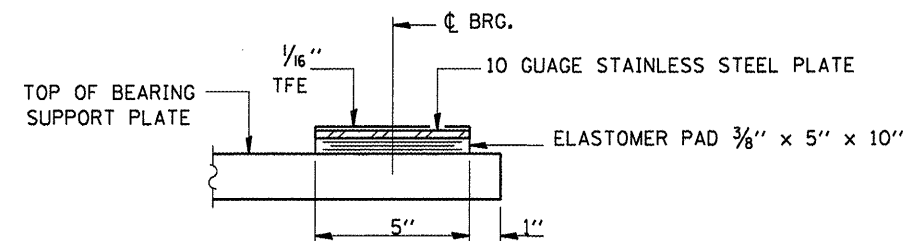
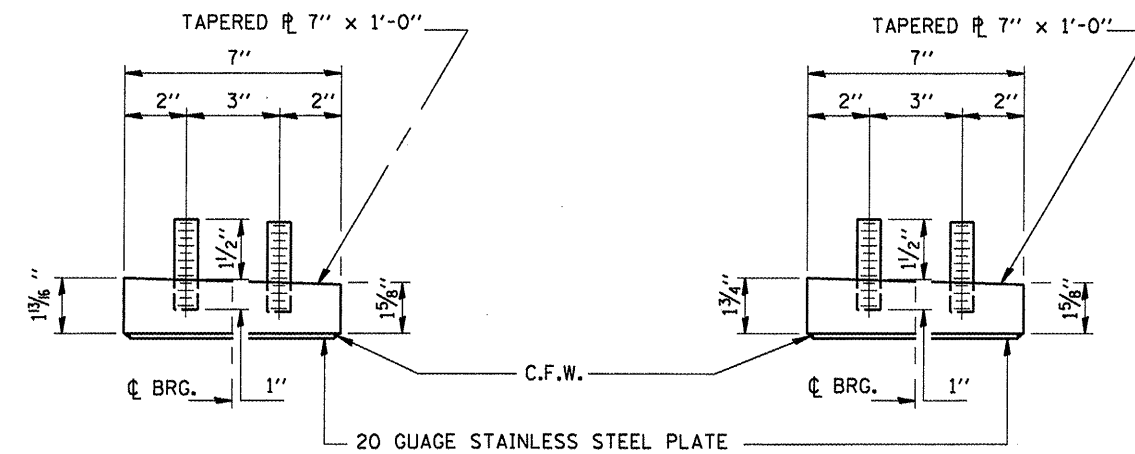


**SECTION AT RELIEF JOINT BEARING**  
TYPICAL FOR ALL RELIEF JOINTS



**BOTTOM BEARING ASSEMBLY**  
TYPICAL FOR ALL RELIEF JOINTS



**TOP BEARING ASSEMBLY**  
LOOKING EAST AT FLOOR BEAMS  
FB3, 6, 9, 12 & 17

**TOP BEARING ASSEMBLY**  
LOOKING EAST AT FLOOR BEAMS  
FB3', 6', 9', 12' & 17'

**BEARING DETAILS**  
**AT RELIEF JOINTS**  
**FAP RTE 46 SEC (1-BD)BP**  
**LASALLE COUNTY**  
**STA 204+67.75**  
**SN 050-0079**

FILE NAME =	USER NAME = woodshankr1	DESIGNED = RON WOODSHANK	REVISED =
ca:\p\work\PWIDOT\WOODSHANKRL\dms29370	d366854-sht-details.dgn	DRAWN = RON WOODSHANK	REVISED =
	PLOT SCALE = 100.0000 ' / IN.	CHECKED =	REVISED =
	PLOT DATE = Oct 15, 2008 - 07:08:05 AM	DATE =	REVISED =

STATE OF ILLINOIS  
DEPARTMENT OF TRANSPORTATION

**FOR INFORMATION ONLY**

SCALE: \_\_\_\_\_ SHEET NO. 28 OF 30 SHEETS STA. 193+08.08 TO STA. 216+13.82

F.A.P. RTE.	SECTION	COUNTY	TOTAL SHEETS	SHEET NO.
46	(1-BD)BP	LASALLE	38	36
FED. ROAD DIST. NO. [ILLINOIS] FED. AID PROJECT			CONTRACT NO. 66854	