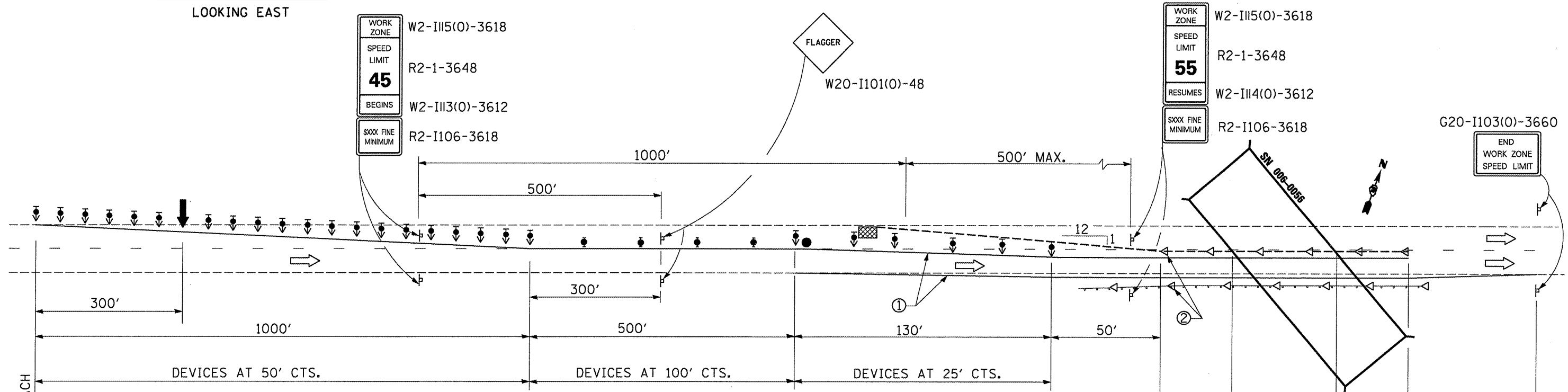


CROSS SECTION
LOOKING EAST

- ① Temporary pavement marking tape shall be placed throughout the taper and along-side the work area. The right edge line shall be white and the left edge line shall be yellow.
- ② Barrier wall/guardrail markers at 7.6 m (25'). Markers on right shall be crystal and markers on left shall be amber.
- ③ Pavement Marking removal



PLAN
STAGE 1

SEE STANDARD 701400 FOR APPROACH
START OF LANE CLOSURE TAPER

- SYMBOLS**
- ↑ Arrow board
 - ▨ Work area
 - ⊥ Sign
 - ↑ Direction Indicator barricade with steady burn monodirectional light
 - ⊥ Type II barricade, drum, or vertical barricade with steady burn monodirectional light
 - Temporary concrete barrier
 - ◁ Monodirectional barrier wall/guardrail marker
 - ▨ Impact attenuator
 - Flagger with traffic control sign

GENERAL NOTES

This standard is used where at any time any vehicle, equipment, workers or their activities will encroach on the pavement or on the shoulder within 600 mm (24") of the edge of pavement for day light operation exceeding one day and where temporary concrete barrier is utilized.

This Standard must always be used in combination with Standard 701400.

When work is being performed in the left lane, the set up would be a mirror image to what is shown.

FILE NAME =	USER NAME = woodshankr1	DESIGNED - RON WOODSHANK	REVISED -
c:\pwwork\pwwid01\WOODSHANKR1\dms50937	D366876 - SN 006-0058-detaila.dgn	DRAWN - RON WOODSHANK	REVISED -
	PLOT SCALE = 100.0000' / IN.	CHECKED -	REVISED -
	PLOT DATE = Oct 07, 2008 - 06:54:14 AM	DATE -	REVISED -

STATE OF ILLINOIS
DEPARTMENT OF TRANSPORTATION

STAGE I TRAFFIC CONTROL

SCALE: SHEET NO. 1 OF 2 SHEETS STA. TO STA.

F.A.I. RTE. 180	SECTION (06-2HB-4)BP	COUNTY BUREAU	TOTAL SHEETS 14	SHEET NO. 5
FED. ROAD DIST. NO. ILLINOIS			CONTRACT NO. 66876	