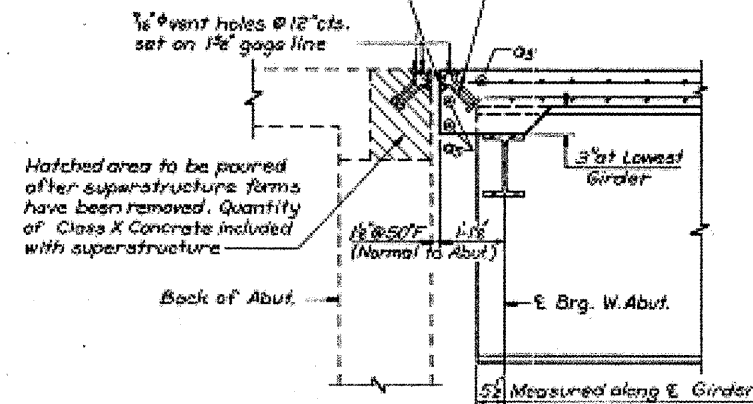
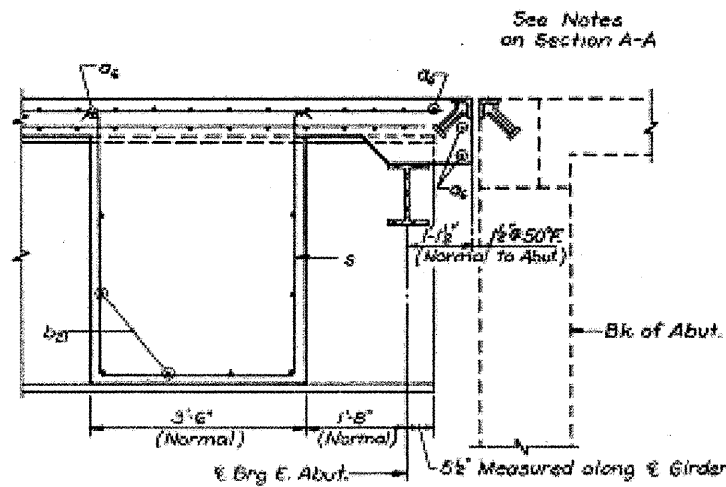


ROUTE NO.	SECTION	COUNTY	TOTAL SHEETS	SHEET NO.
F. A. I. - 180	06-2HR-4	BUREAU	105	12
FED. ROAD DIST. NO. 4		ILLINOIS	PROJECT	

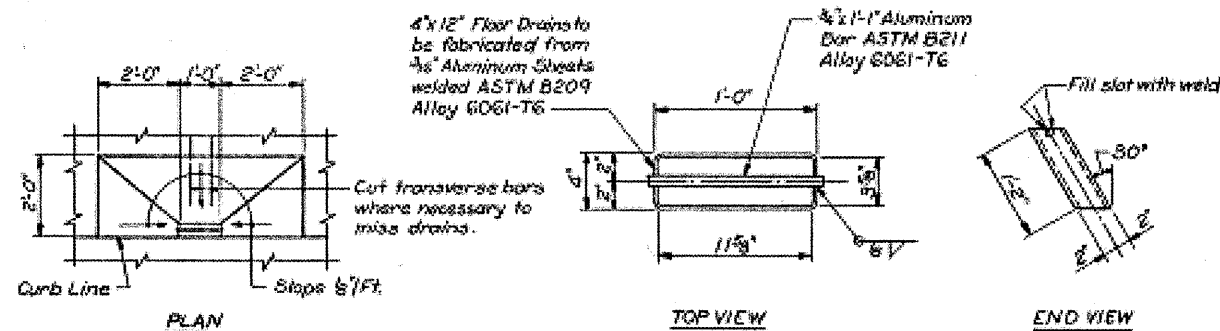
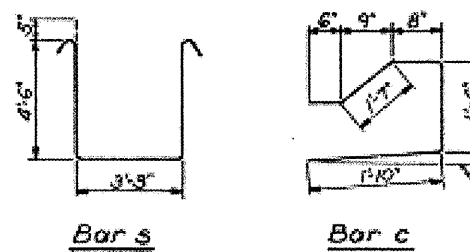
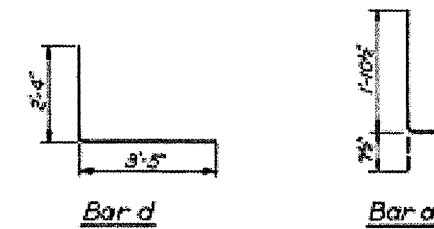
1/2" holes at 12" cts. for 3/8" bolts set on 2" gage line. All bolts shall be turned, sawed or clipped off flush with back of angles after forms are removed.



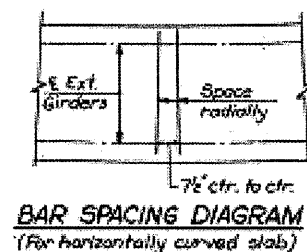
SECTION A-A



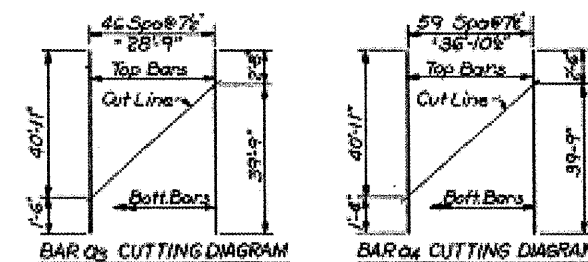
SECTION B-B



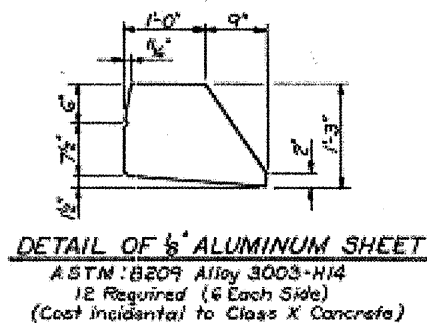
FLOOR DRAIN DETAIL
(Cost incidental to Class X Concrete)



BAR SPACING DIAGRAM
(For horizontally curved slab)



BAR C CUTTING DIAGRAM



DETAIL OF 1/2" ALUMINUM SHEET
ASTM: B209 Alloy 5052-H14
12 Required (6 Each Side)
(Cost incidental to Class X Concrete)

DESIGNED BY: R.W.
DRAWN BY: J.S.
CHECKED BY: B.B.
APPROVED BY: R.A.

Revision: #6-bar quantity changed from 75-480 to 85-480 # B-2-67 R.W.

APPROVED
FOR STRUCTURAL APPROVAL ONLY
C. E. HANCOCK
REGISTERED PROFESSIONAL ENGINEER
NO. 2-267

FOR INFORMATION ONLY

NOTES:
Weight of bearing assemblies with lead plates and anchor bolts are included as structural steel. Est. Wt. 9050 lbs.
The lengths and quantities of longitudinal reinforcement in parapet are not included in above quantities. See Sh. 5.

BILL OF MATERIAL				
Bar No.	No.	Size	Length	Shape
4a	315	#6	41'-11"	
4a	315	#6	39'-11"	
4a	47	#6	42'-5"	
4a	60	#6	42'-3"	
4a	6	#6	25'-11"	
4a	10	#6	28'-7"	
4b	558	#5	37'-3"	
4b	43	#6	41'-0"	
4b	43	#6	45'-6"	
4b	3	#6	40'-0"	
4b	6	#6	20'-3"	
4b	12	#6	11'-9"	
4b	9	#6	32'-11"	
4b	6	#6	23'-9"	
4b	3	#6	24'-9"	
4b	3	#6	39'-3"	
4b	9	#6	32'-6"	
4b	3	#6	24'-0"	
4b	2	#5	40'-0"	
4b	4	#5	20'-3"	
4b	6	#5	11'-9"	
4b	6	#5	32'-10"	
4b	4	#5	23'-9"	
4b	2	#5	24'-9"	
4b	2	#5	39'-3"	
4b	6	#5	32'-5"	
4b	2	#5	24'-0"	
4b	40	#5	9'-9"	
4c	368	#4	6'-1"	
4d	459	#6	5'-9"	L
4d	459	#4	2'-6"	L
4e	36	#4	13'-1"	9 L
Item	Unit	Total		
Reinforcement Bars	Lbs.			
Structural Steel	Lbs.	360,220		
Class X Concrete	Cu. Yds.	283.7		
Protective Coat	Sq. Yds.	1153		

*NOTE X:
The first one or two Digits of the Bar Mark in the Bill of Material correspond to the Sheet Number. These Digits are omitted on the Drawing.

BRIDGE NO. 8
STATE OF ILLINOIS
DEPARTMENT OF PUBLIC WORKS & BLDGS.
DIVISION OF HIGHWAYS
SUPERSTRUCTURE DETAILS
ROADWAY "F" OVER ROADWAY "G"
STATION 655+47.92
F. A. I. RT. 180 BUREAU COUNTY SECTION 06-2HR-4
H. W. LOCHNER, INC.
ENGINEERS
CHICAGO, ILLINOIS
SHEET
4 OF 18