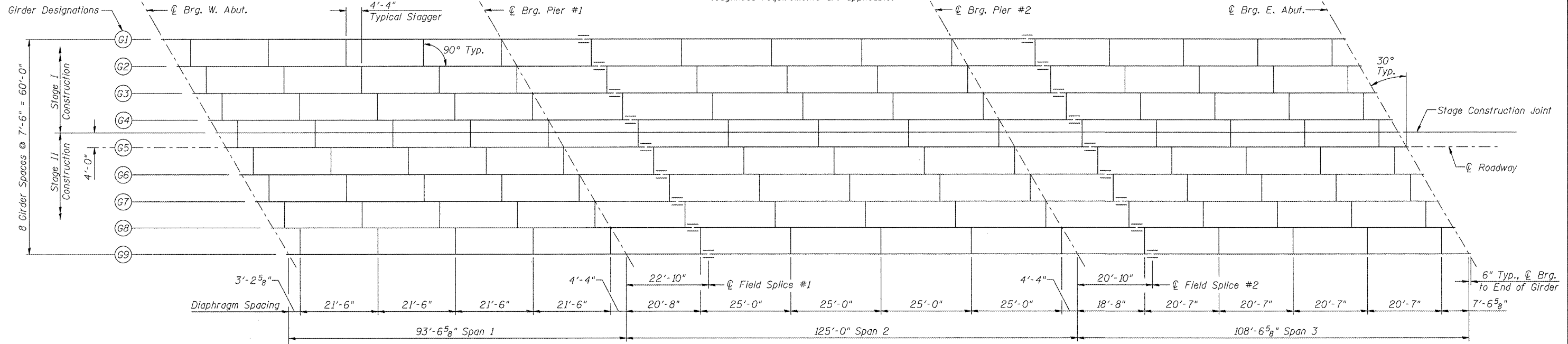
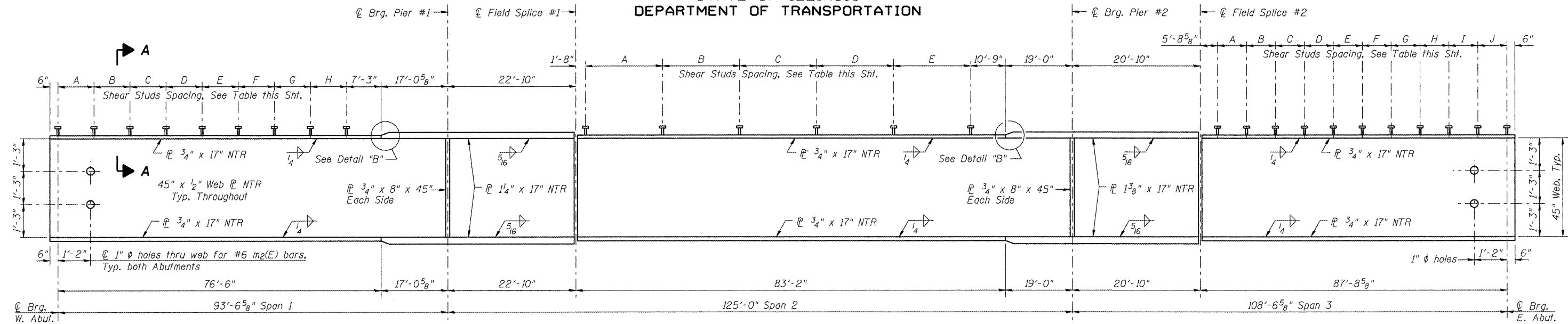


STATE OF ILLINOIS
DEPARTMENT OF TRANSPORTATION

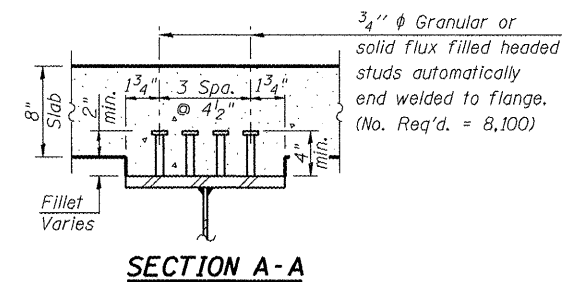
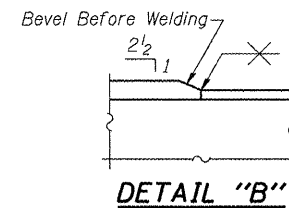


Note:
See Sht. 16 of 33 for Bearing Stiffener, Field Splice,
and Diaphragm Details.

SHEAR STUD ROW SPACING (WEST TO EAST)

Space	Span 1	Span 2	Span 3
A	3 Spaces @ 9" = 2'-3"	6 Spaces @ 5" = 2'-6"	6 Spaces @ 5" = 2'-6"
B	7 Spaces @ 10" = 5'-10"	11 Spaces @ 12" = 11'-0"	12 Spaces @ 13" = 13'-0"
C	8 Spaces @ 12" = 8'-0"	45 Spaces @ 13" = 48'-9"	12 Spaces @ 14" = 14'-0"
D	5 Spaces @ 14" = 5'-10"	6 Spaces @ 12" = 6'-0"	11 Spaces @ 15" = 13'-9"
E	5 Spaces @ 15" = 6'-3"	6 Spaces @ 5" = 2'-6"	8 Spaces @ 14" = 9'-4"
F	7 Spaces @ 16" = 9'-4"		9 Spaces @ 13" = 9'-9"
G	27 Spaces @ 13" = 29'-3"		7 Spaces @ 12" = 7'-0"
H	6 Spaces @ 5" = 2'-6"		6 Spaces @ 11" = 5'-6"
I			5 Spaces @ 10" = 4'-2"
J			4 Spaces @ 9" = 3'-0"
TOTALS	68 Spaces, 69 Rows	74 Spaces, 75 Rows	80 Spaces, 81 Rows

FRAMING PLAN



**STRUCTURAL STEEL
AIRPORT ROAD OVER U.P.R.R.
AND KICKAPOO CREEK TRIBUTARY
STATION 45+42.00**

DESIGNED	PJL
CHECKED	LLV
DRAWN	MGM
CHECKED	PJL

STS AECOM 111 NE Jefferson Avenue Peoria, IL 61602 T 309.676.8464 Fax 309.676.5445 IL Design Firm Reg. No. 184-001518 www.stsconsultants.com	SHEET NO. 14 OF 33 SHEETS	F.A.U. RTE. 6578	SECTION (1-R)RS(1-VC)BR	COUNTY PEORIA	TOTAL SHEETS 142	SHEET NO. 74
	STRUCTURE NO. 072-0201		CONTRACT NO. 68092		FED. ROAD DIST. NO. _ ILLINOIS FED. AID PROJECT	