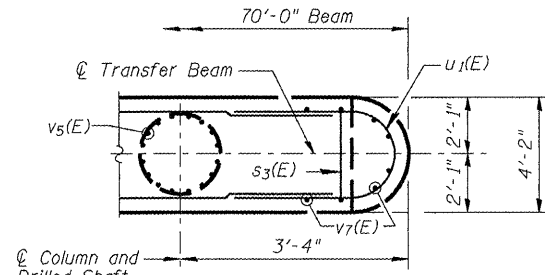
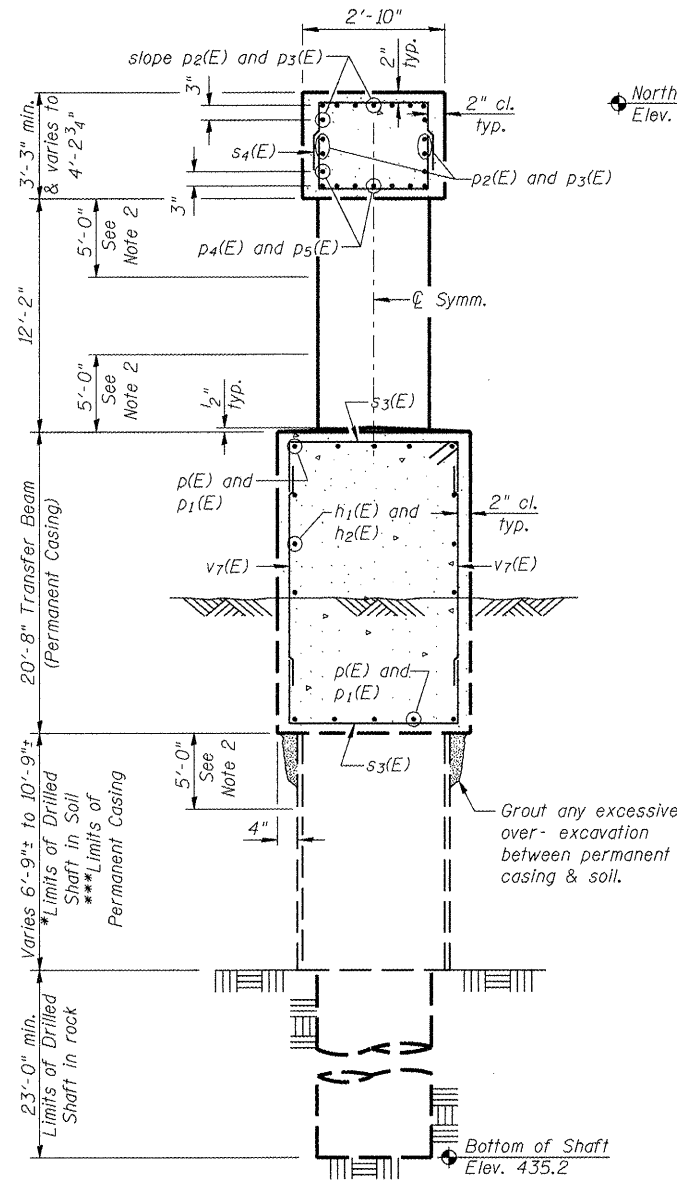


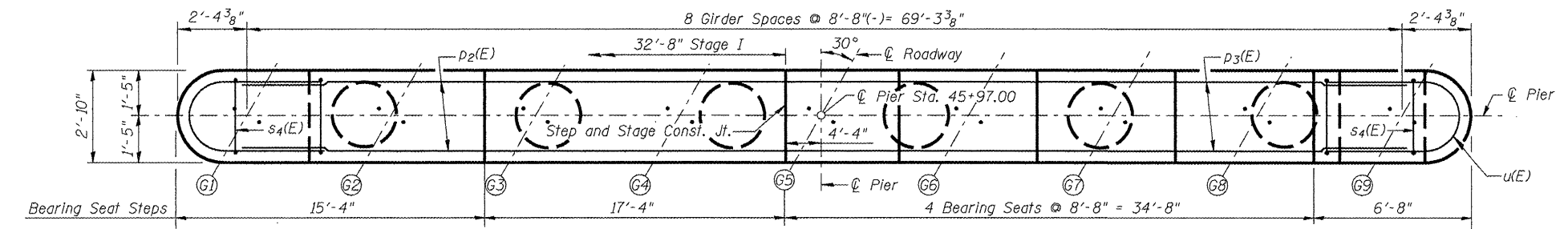
STATE OF ILLINOIS  
DEPARTMENT OF TRANSPORTATION



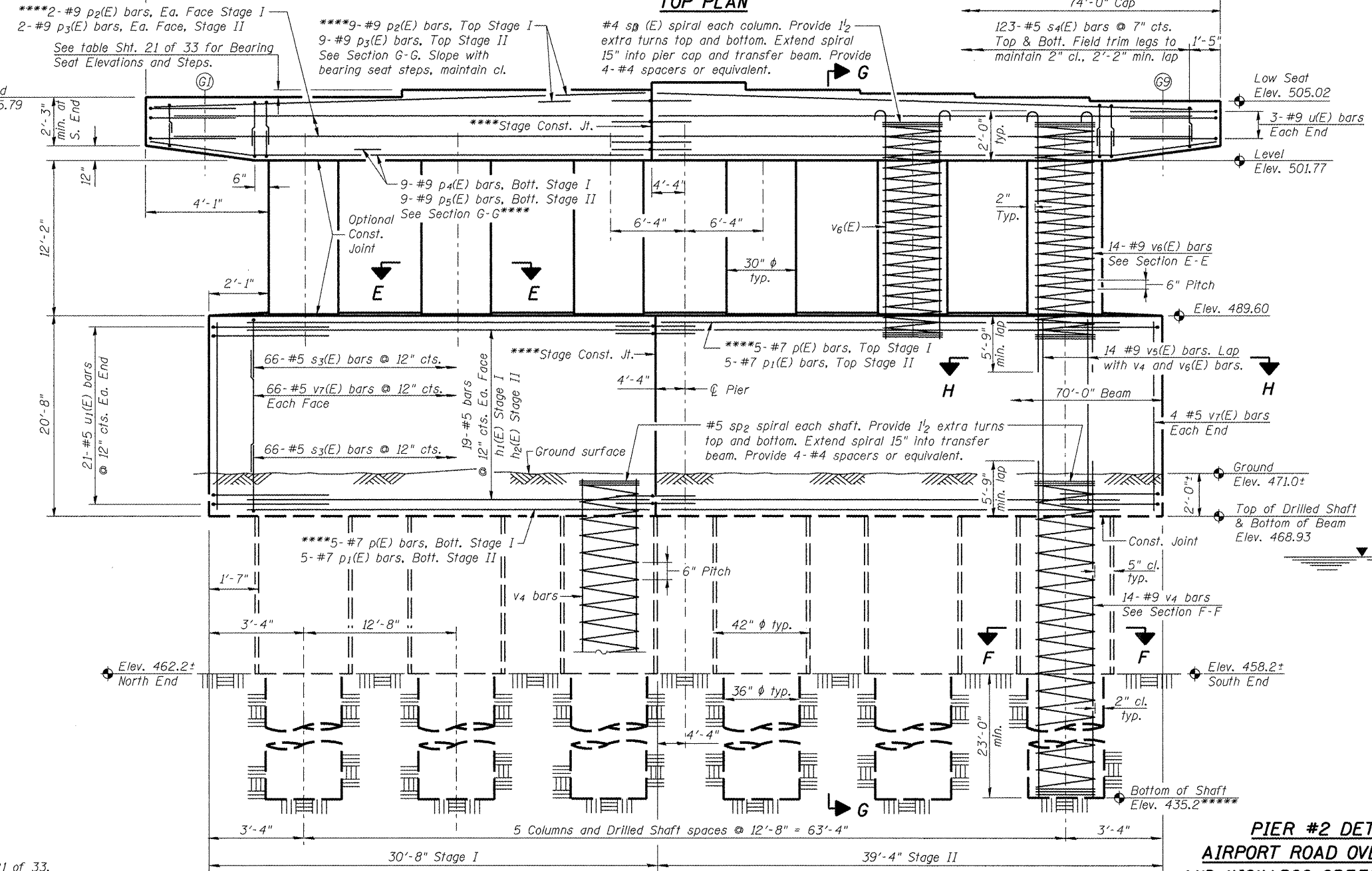
**SECTION H-H**  
Typ. Both Ends



**SECTION G-G**



**TOP PLAN**



**ELEVATION**  
(Looking East)

**PIER #2 DETAILS**  
**AIRPORT ROAD OVER U.P.R.R.**  
**AND KICKAPOO CREEK TRIBUTARY**  
**STATION 45+42.00**

\* See note, Sht. 21 of 33.

\*\*\*Contractor is responsible for determining the casing thickness and the actual tip elevation to be used. See Article 516.06(d) of the Standard Specifications. Pay limits for the Permanent Casing shall be based on the minimum length shown.

\*\*\*\* Use Bar Splicers at Stage Construction Joint.

1. See Sht. 21 of 33 for notes, Section E-E, Section F-F, Bar Bends, and Bill of Material.  
2. No spiral or vertical bar splices are permitted in these regions

DESIGNED	PJL
CHECKED	LLV
DRAWN	MGM
CHECKED	PJL

<b>STS   AECOM</b> 111 NE Jefferson Avenue Peoria, IL 61602 T 309.676.8464 Fax 309.676.5445 IL Design Firm Reg. No. 184-001518 www.stsconsultants.com	SHEET NO. 20 OF 33 SHEETS	F.A.U. RTE.	SECTION	COUNTY	TOTAL SHEETS	SHEET NO.
		6578	(1-R)RS(1-VC)BR	PEORIA	142	80
		STRUCTURE NO. 072-0201		CONTRACT NO. 68092		
		FED. ROAD DIST. NO. ILLINOIS FED. AID PROJECT				