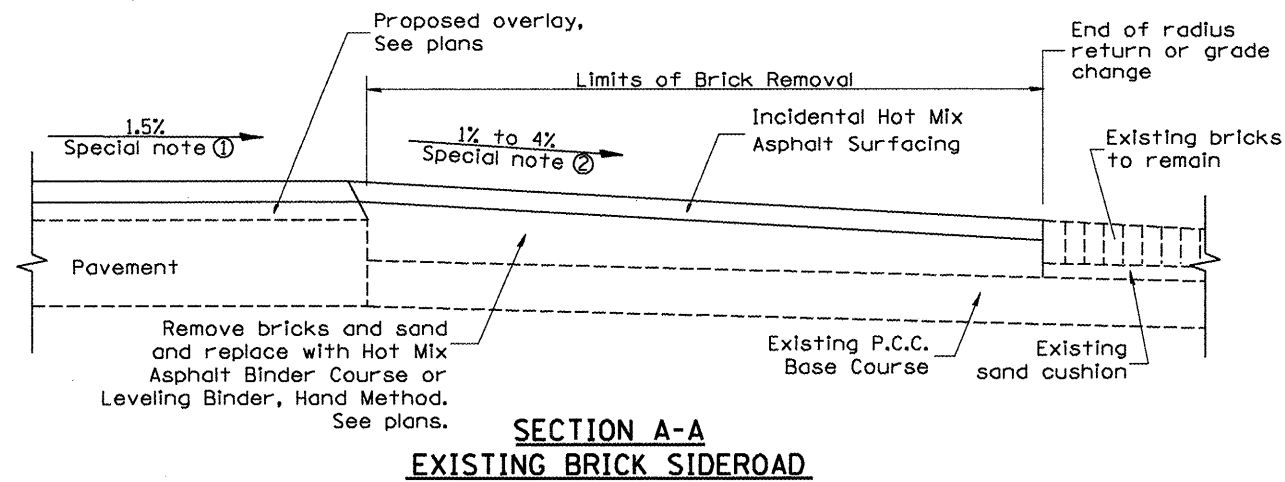
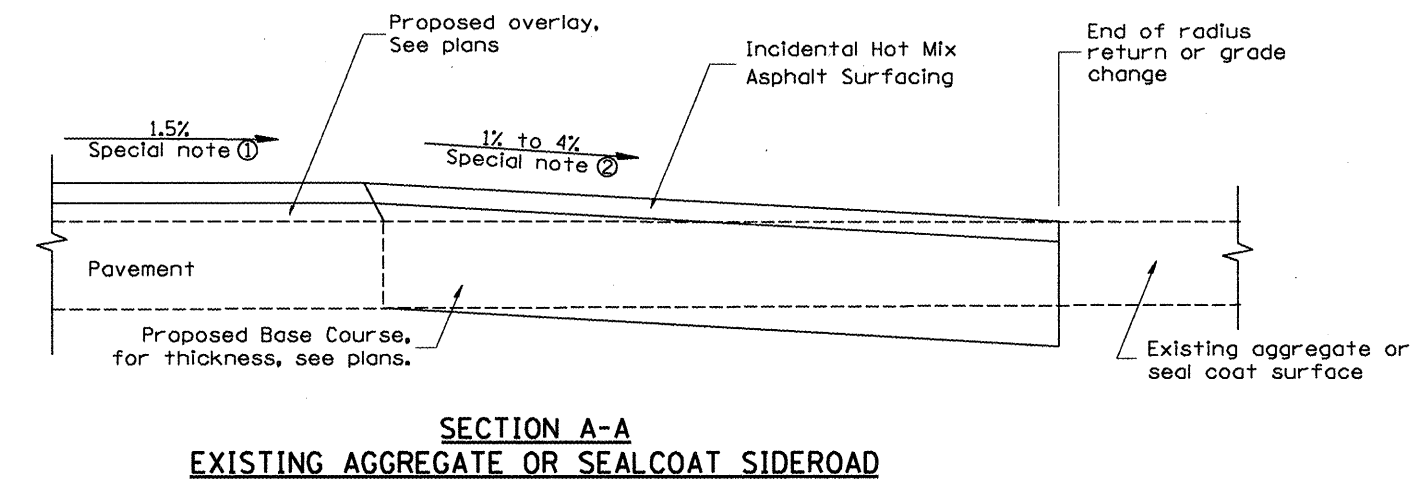


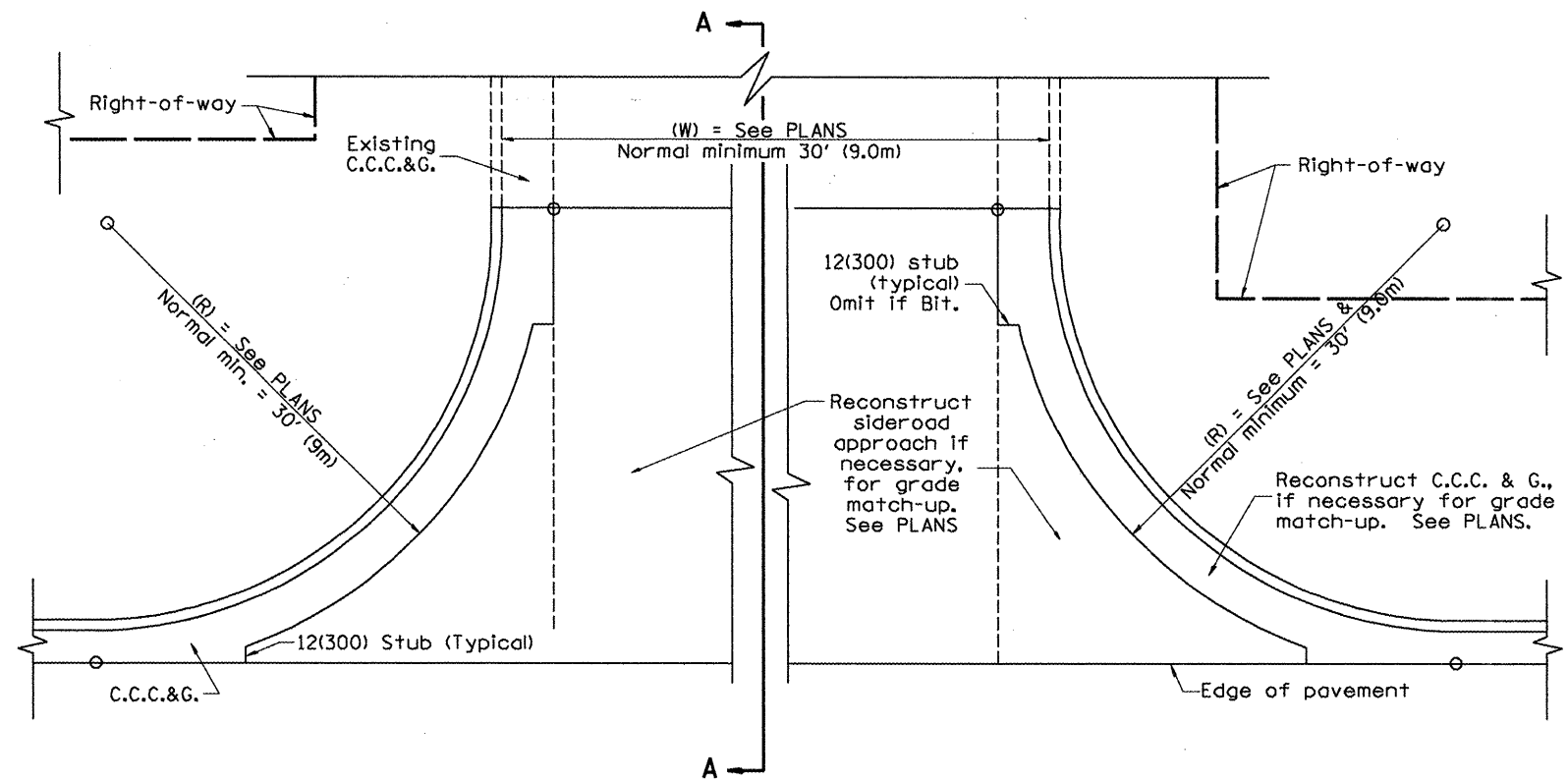
**SECTION A-A
EXISTING PCC OR HOT MIX ASPHALT SIDEROAD**



**SECTION A-A
EXISTING BRICK SIDEROAD**



**SECTION A-A
EXISTING AGGREGATE OR SEALCOAT SIDEROAD**



PLAN

SPECIAL NOTES

- ① The mainline pavement cross-slope is 1.5% for tangent alignment. See Plans for cross-slope on superelevated horizontal curves.
- ② The sideroad profile should drain away from the mainline at 1% to 4% for 50' (15.0m) to 100' (30.0m), or as a minimum to the end of the radius return. When the sideroad is on the high side of a mainline superelevated curve, - 2% maximum should be provided in order to minimize breakover at the pavement edge. See plans for sideroad profiles.

All dimensions are in inches (millimeters) unless otherwise noted.

01-01-97	RENUM. C-105.01, NEW REVISION BOX	T.P.
07-01-97	REVISE DESIGNER NOTES	J.A.
09-15-05	REVISED DESIGNER NOTE	M.M.A.
10-16-06	REVISED TO 2007 SPEC.	M.A.

**STATE OF ILLINOIS
DEPARTMENT OF TRANSPORTATION**

URBAN SIDEROADS FOR "3R" PROJECTS

NOT TO SCALE

CADD STD. 406501-D4

F.A.U. RTE.	SECTION	COUNTY	TOTAL SHEET NO.
6578	(1)-RIRS, (1)-VCIBR	PEORIA	142/131
FED. ROAD DIST. NO. ILLINOIS FED. AID PROJECT			CONTRACT NO. 68092