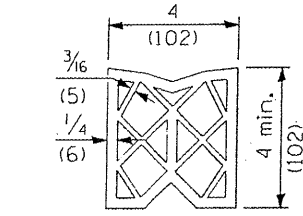
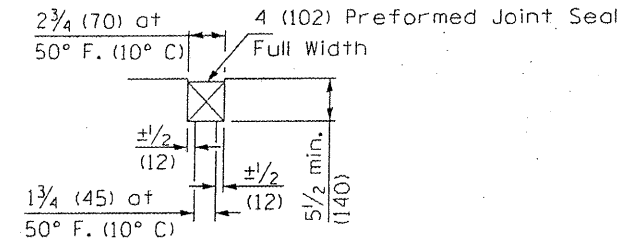


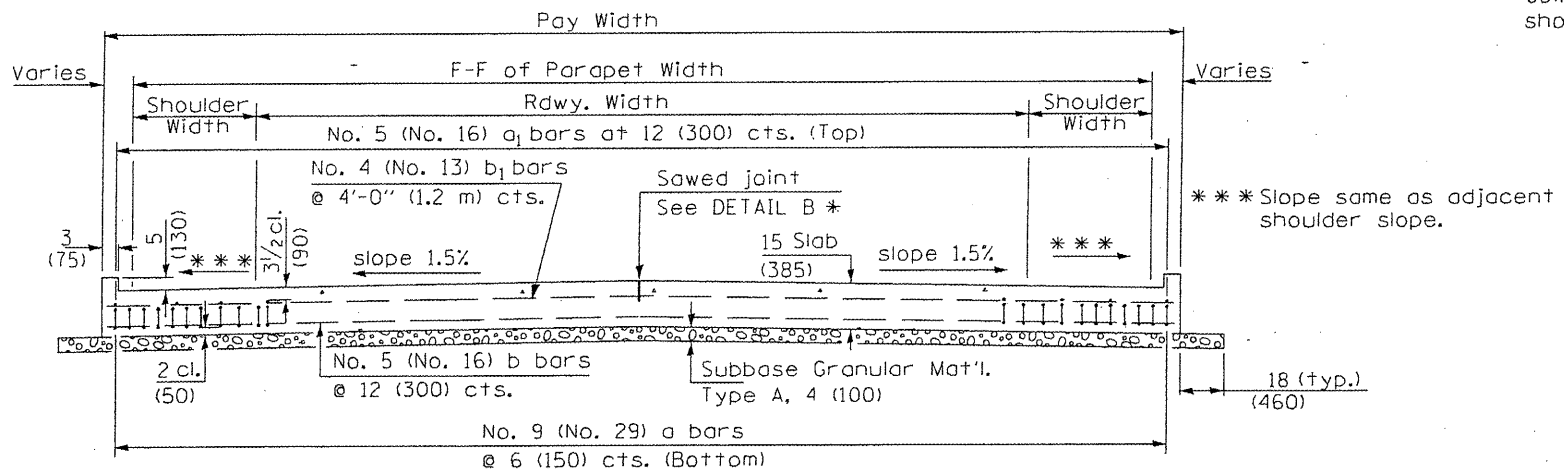
① Stagger No. 9 (No. 29) a bars as shown on plan - full width



PREFORMED JOINT SEAL



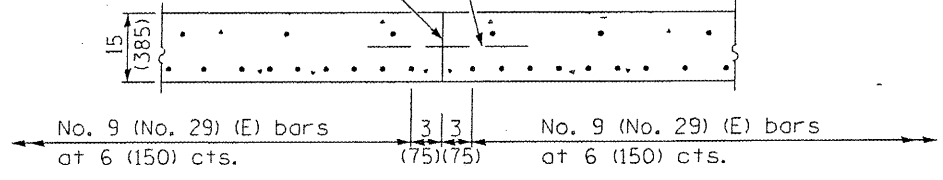
DETAIL A



SECTION D-D

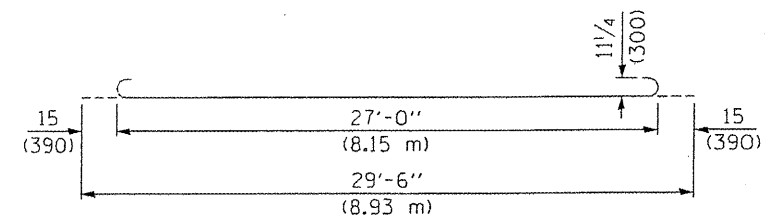
(See Plan for Dimensions not shown)

Longitudinal Construction Joint in accordance with details shown on Standard 420001.

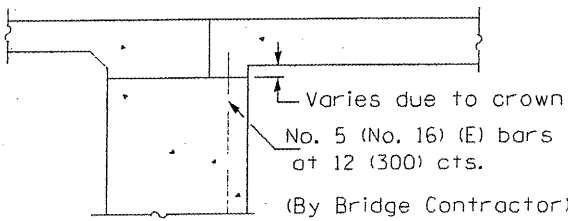


OPTIONAL LONGITUDINAL CONSTRUCTION JOINT

As approved by the Engineer, the Contractor may elect to reduce the widths of pour by use of the Optional Longitudinal Construction Joint shown. Joints shall be located at the edge of a traffic lane.

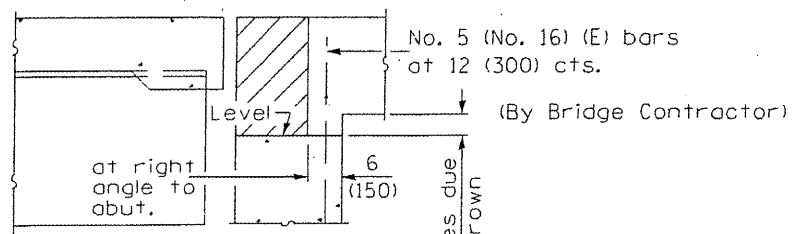


BAR a



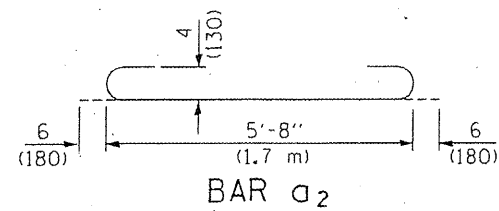
SECTION E-E

(Integral Abutments)



SECTION E-E

(Jointed Abutments)



BAR a2

DESIGN STRESSES
 fy = 60,000 p.s.i. (400 MPa)
 f'c = 3,500 p.s.i. (24 MPa)
 n = 8.5

BRIDGE APPROACH PAVEMENT

(Sheet 3 of 4)

SHEET 142C

CONTRACT # 68092

Illinois Department of Transportation

APPROVED January 1, 2008
Walsh E. Anderson
 ENGINEER OF BRIDGES AND STRUCTURES

APPROVED January 1, 2008
Ken E. Han
 ENGINEER OF DESIGN AND ENVIRONMENT

ISSUED 1-1-08

142C