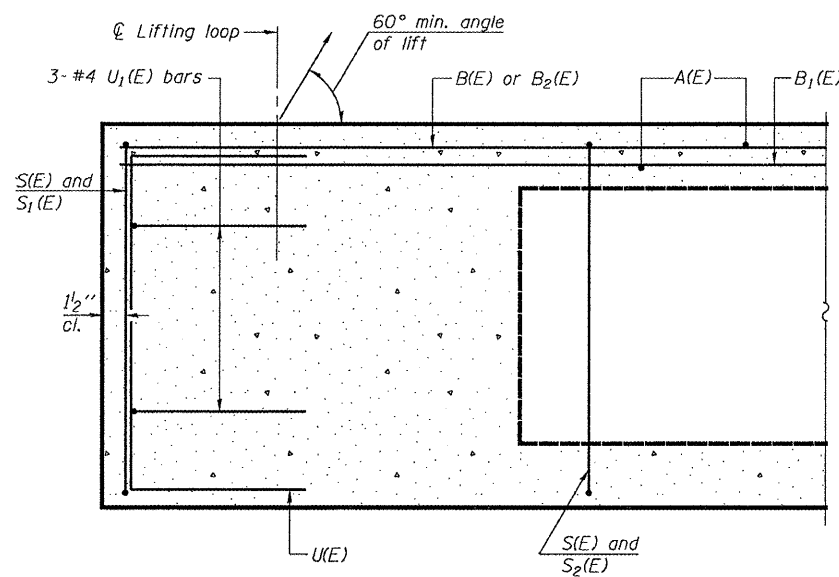
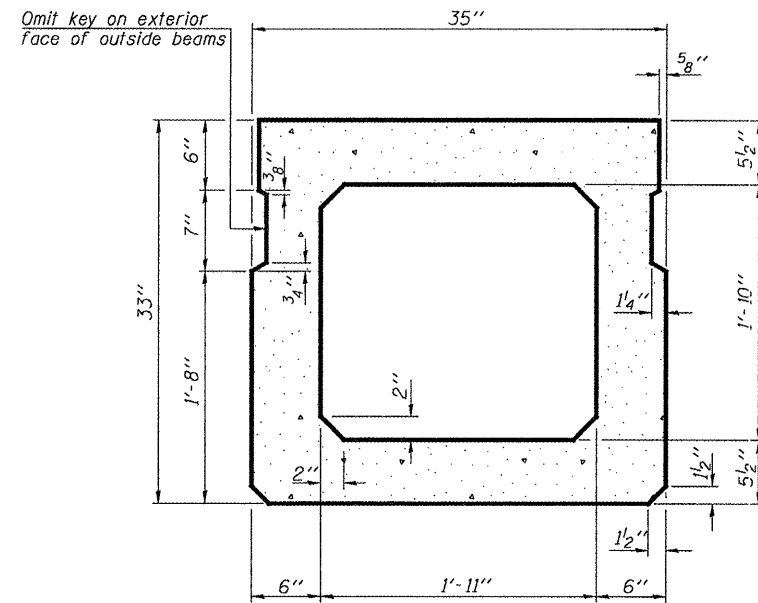


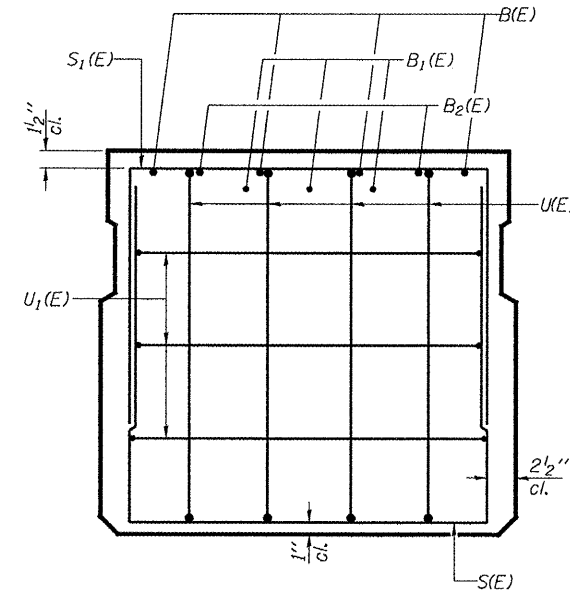
STATE OF ILLINOIS
DEPARTMENT OF TRANSPORTATION



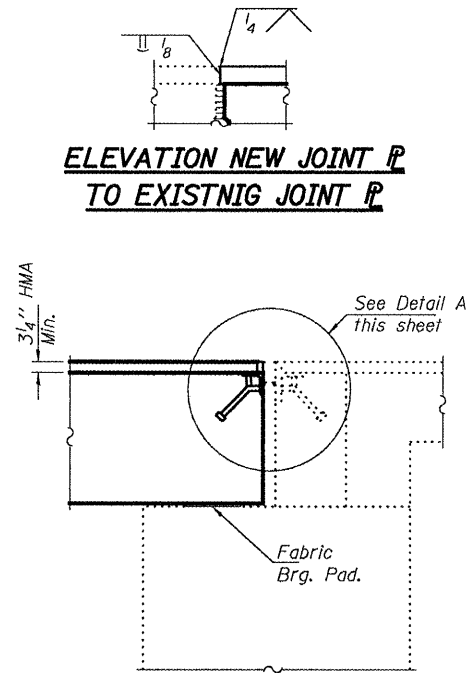
SECTION C-C



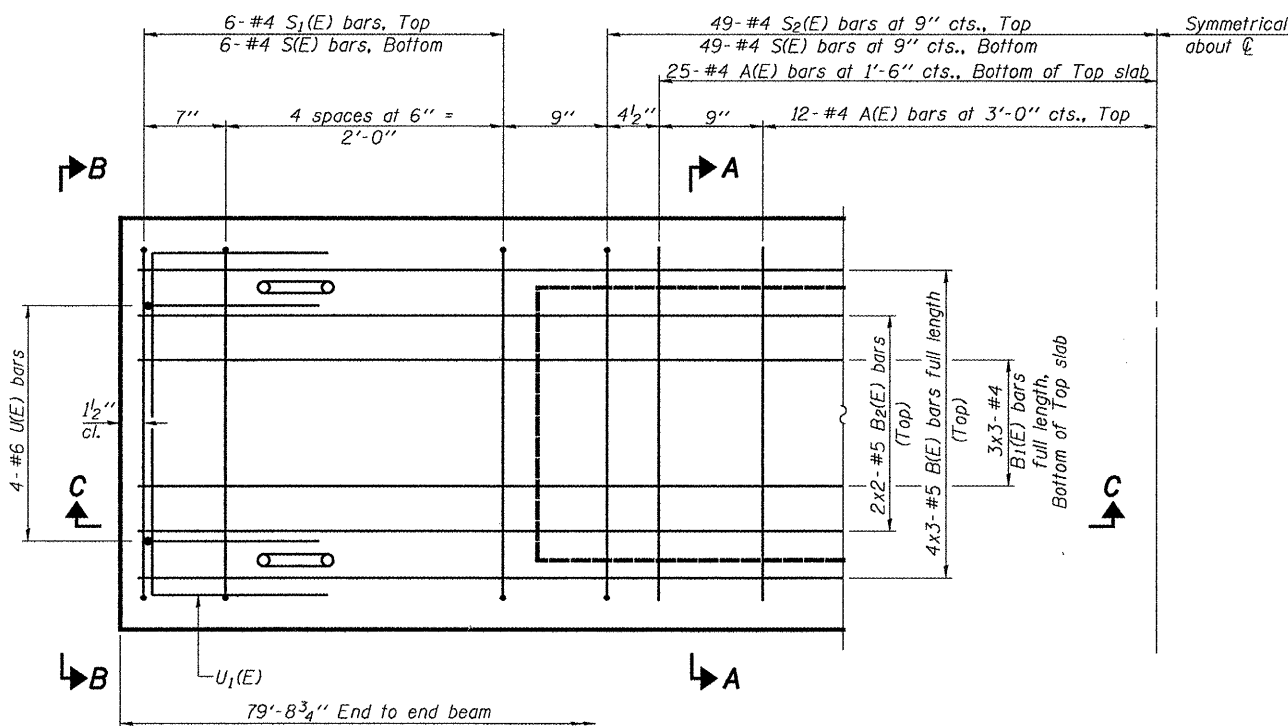
SECTION A-A
(Showing dimensions)



VIEW B-B

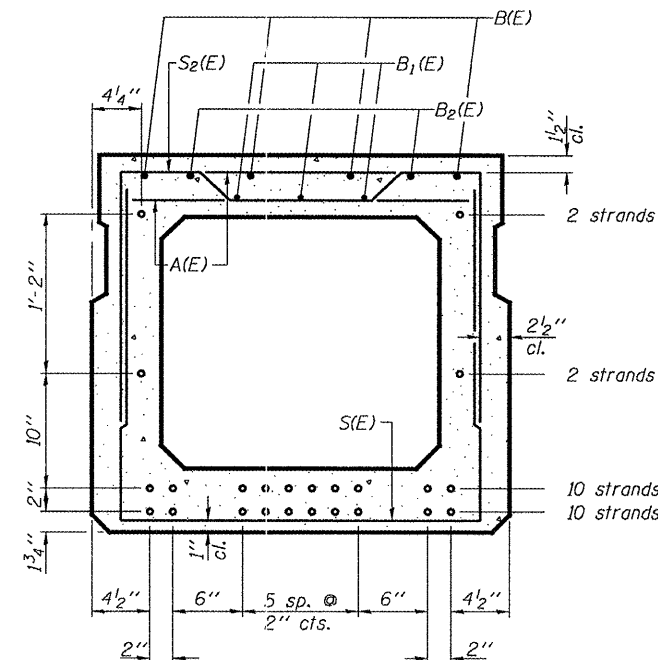


SECTION THRU
SOUTH ABUTMENT



PLAN VIEW

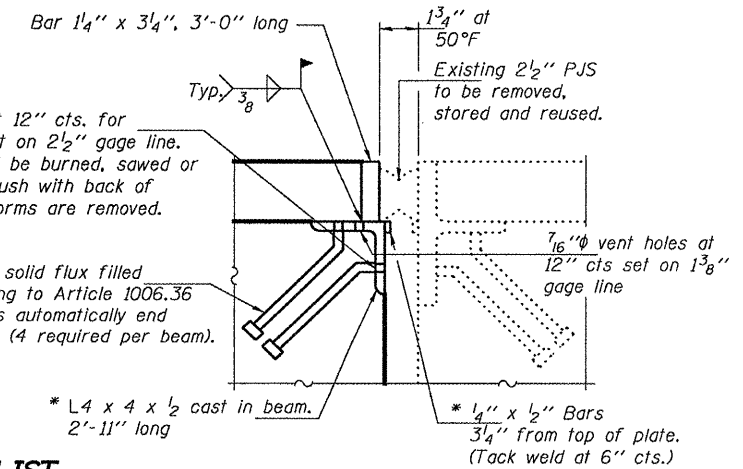
Note: Spacing of S(E) and S2(E) bars may be adjusted up to 4" in the immediate area of the transverse tie diaphragms to miss the block outs for the transverse ties.



SECTION A-A

(Showing reinforcement and permissible strand locations)

Note: Place the number of strands specified in each row symmetrically about the centerline of beam in the permissible strand locations shown.



DETAIL A

(Cost included with PPC Deck Beams)

* Need not be galvanized.

MIN. BAR LAPS

#4 Bar = 1'-8"
#5 Bar = 2'-2"

* 3/4"φ x 8" granular or solid flux filled headed studs conforming to Article 1006.36 of the Standard Spec's automatically end welded at 12" alt. cts. (4 required per beam). Cast in beam.

BAR LIST
ONE BEAM ONLY
(For information only)

Bar	No.	Size	Length	Shape
A(E)	74	#4	2'-7"	—
B(E)	12	#5	28'-0"	—
B1(E)	9	#4	27'-8"	—
B2(E)	4	#5	16'-0"	—
S(E)	110	#4	7'-4"	U
S1(E)	12	#4	6'-2"	U
S2(E)	98	#4	6'-5"	U
U(E)	8	#6	5'-0"	C
U1(E)	6	#4	4'-11"	C

Bars indicated thus 4 x 3-#5 etc. indicates 4 lines of bars with 3 lengths per line.

Note: See sheet 3 of 3 for additional details and Bill of Material.

BEAM DETAILS
IL ROUTES 94 & 116
OVER ELLISON CREEK
SN 036-0004

DESIGNED	ATH
CHECKED	AJB
DRAWN	Kyle M. Steffen
CHECKED	ATH AJB

OCTOBER 30, 2008
EXAMINED *Carl Proyer*
ENGINEER OF STRUCTURAL SERVICES
PASSED *Ralph E. Anderson*
ENGINEER OF BRIDGES AND STRUCTURES

PD-3336-0 5-16-08

SHEET NO. 2 3 SHEETS	F.A.P. RTE. 534	SECTION (109BR)I	COUNTY HENDERSON	TOTAL SHEETS 11	SHEET NO. 10
	CONTRACT NO. 68848		FED. ROAD DIST. NO. ILLINOIS FED. AID PROJECT		