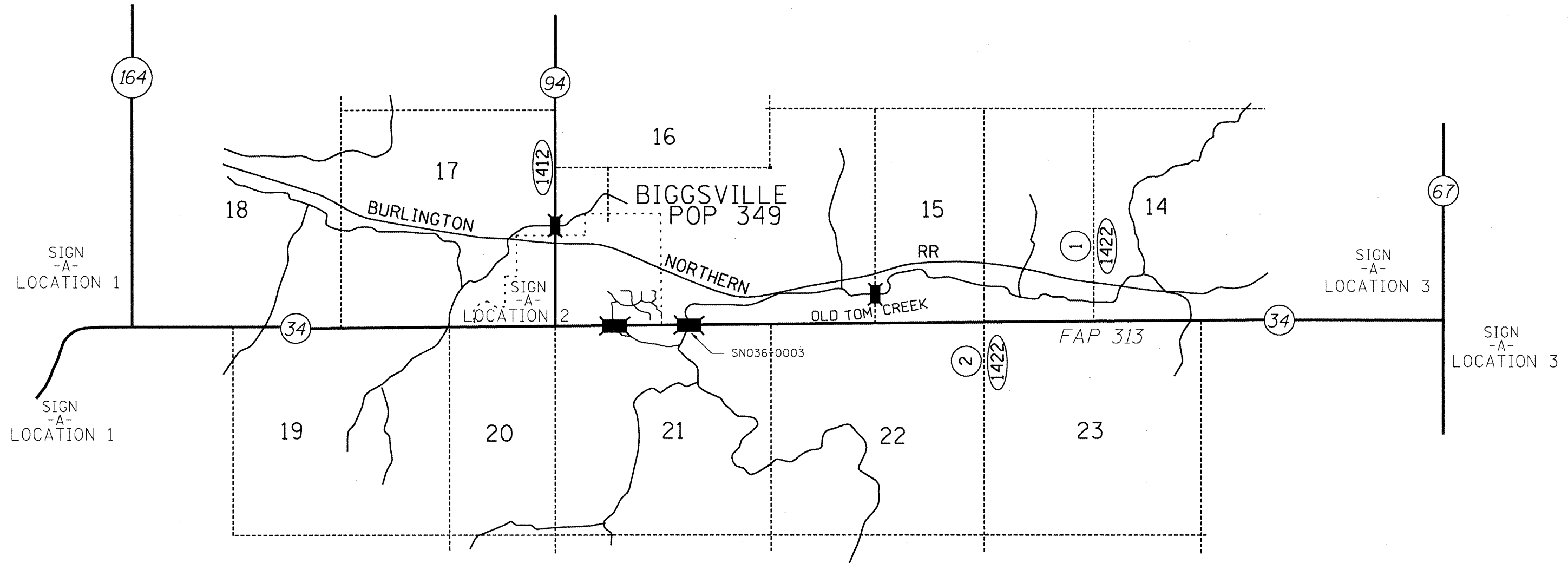


NOTES  
 Notification signs shall be posted where necessary indicating maximum width ahead of 12'-0" and Changeable Message Boards for traffic from both directions placed one week prior to work start date for public safety and awareness.



**SN.036-0003 SIGNING DISTANCES**

	SIGN -A-	SIGN -B-
LOCATION 1	2 EA.	NA
LOCATION 2	1 EA.	
LOCATION 3	2 EA.	
LOCATION 4		

CONTRACTOR PROVIDED MAX. WIDTH  
XX-XX  
XX MILES SIGN -A-  
 IDOT PROVIDED US. 34

SEE SPECIAL PROVISIONS FOR SIGNING DETAILS.

SN.036-0028 US.34 OVER SOUTH HENDERSON CREEKCRK.

FILE NAME =	USER NAME = *USER#	DESIGNED - ---	REVISED - ---	<b>STATE OF ILLINOIS DEPARTMENT OF TRANSPORTATION</b>	<b>WIDTH RESTRICTION SIGNING</b>	F.A.P. RTE.	SECTION	COUNTY	TOTAL SHEETS	SHEET NO.
#FILE#		DRAWN - ---	REVISED - ---			313	68R-111	HENDERSON	---	9
		CHECKED - ---	REVISED - ---			CONTRACT NO. 68849				
		DATE - ---	REVISED - ---	SCALE: _____ SHEET NO. ___ OF ___ SHEETS STA. _____ TO STA. _____		FED. ROAD DIST. NO. _____ ILLINOIS FED. AID PROJECT				