

F.A.P. RTE.	SECTION	COUNTY	TOTAL SHEETS	SHEET NO.
313	(6BR-1)I	HENDERSON	14	1
FED. ROAD DIST. NO.	ILLINOIS	CONTRACT NO. 68849		

STATE OF ILLINOIS
DEPARTMENT OF TRANSPORTATION
DIVISION OF HIGHWAYS

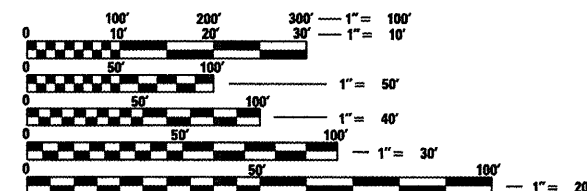
**PROPOSED
HIGHWAY PLANS**
F.A.P. ROUTE 313
US ROUTE 34
SECTION (6BR-1)I
PROJECT
EMERGENCY BRIDGE BEAM REPLACEMENT
HENDERSON COUNTY
C-94-005-09

INDEX OF SHEETS:

- 1. COVER SHEET
- 2. COMMITMENTS & GENERAL NOTES
- 3-4. SUMMARY OF QUANTITIES
- 5. TYPICAL SECTION
- 6. SCHEDULE OF QUANTITIES
- 7-8. TRAFFIC CONTROL
- 9. WIDTH RESTRICTION SIGNING
- 10-14. REPAIR DETAILS

STANDARDS:

- 701001-02 701326-03
- 701006-03 701901-01
- 701201-03 704001-05
- 701321-10 780001-02



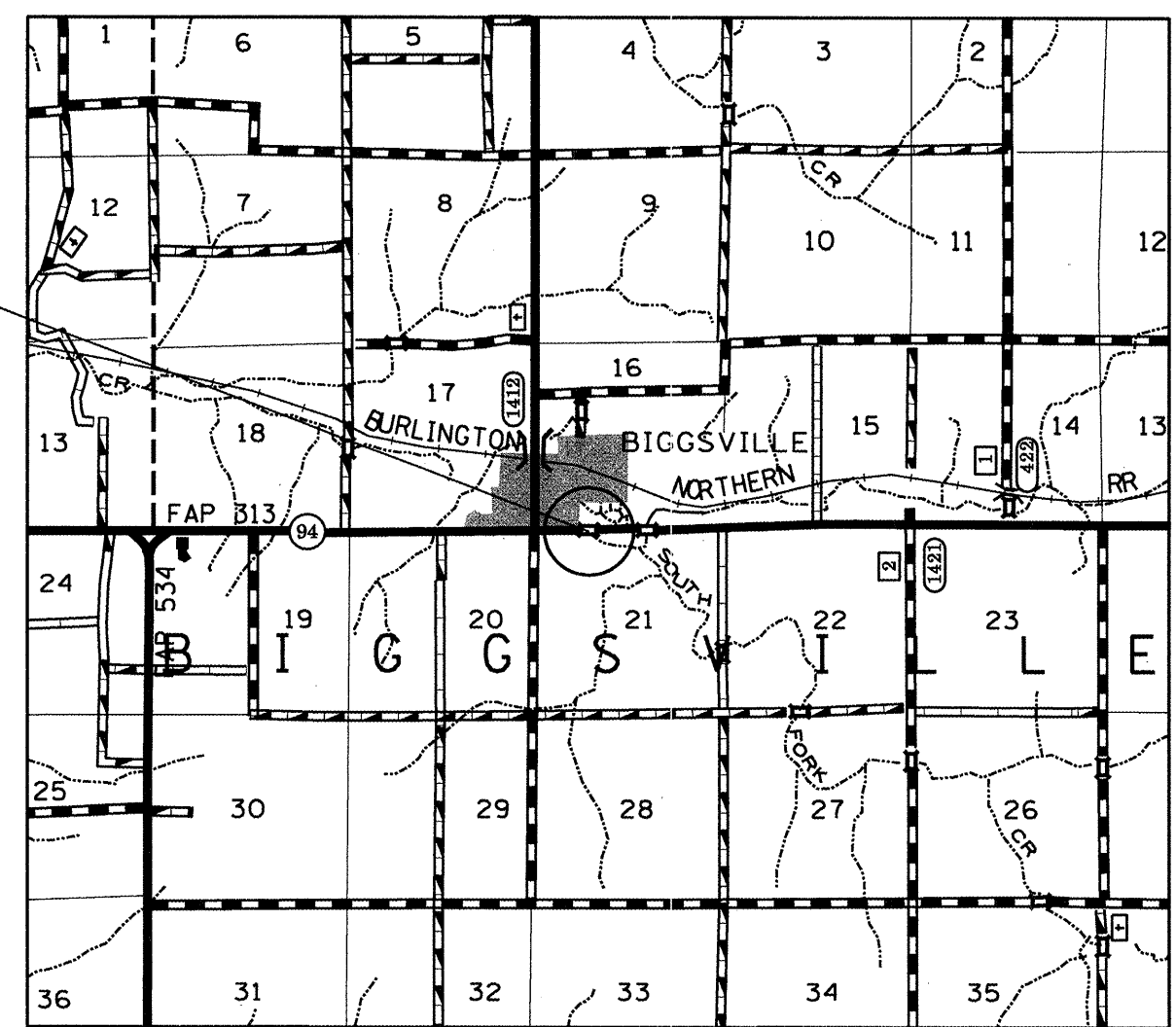
FULL SIZE PLANS HAVE BEEN PREPARED USING STANDARD ENGINEERING SCALES. REDUCED SIZED PLANS WILL NOT CONFORM TO STANDARD SCALES. IN MAKING MEASUREMENTS ON REDUCED PLANS, THE ABOVE SCALES MAY BE USED.

J.U.L.I.E.
JOINT UTILITY LOCATION INFORMATION FOR EXCAVATION
1-800-892-0123
OR 811

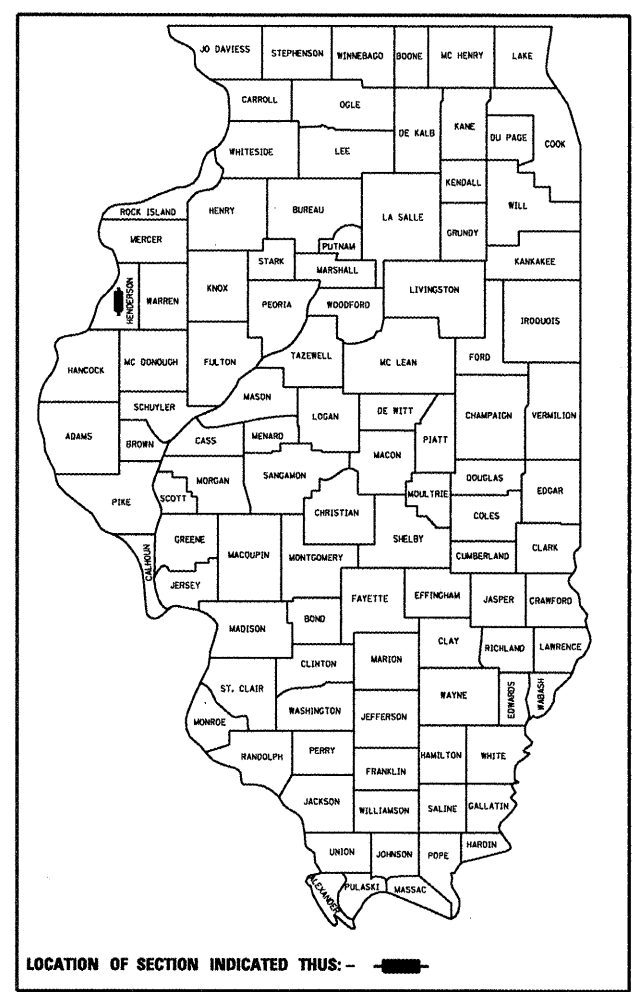
PROJECT ENGINEER
PROJECT MANAGER

CONTRACT NO. 68849

SN.036-0028



LOCATION MAP



LOCATION OF SECTION INDICATED THUS: - [shaded area] -

PROJECT CONSISTS OF EMERGENCY BEAM REPLACEMENT OF (12) PPC DECK BEAMS ON STRUCTURE CARRYING US. 34 OVER SOUTH HENDERSON CREEK (SN.036-0028), 0.3 MILES EAST OF IL. 94.

STATE OF ILLINOIS
DEPARTMENT OF TRANSPORTATION
DIVISION OF HIGHWAYS

SUBMITTED OCT 16, 2008

[Signature]
DEPUTY DIRECTOR OF HIGHWAYS, REGION ENGINEER

December 5, 2008
[Signature]
ENGINEER OF DESIGN AND ENVIRONMENT

December 5, 2008
[Signature]
DIRECTOR OF HIGHWAYS, CHIEF ENGINEER

PRINTED BY THE AUTHORITY
OF THE STATE OF ILLINOIS

COMMITMENTS

No commitments have been made for this project.

GENERAL NOTES

Plan dimensions and details relative to existing structure have been taken from existing plans and are subject to nominal construction variations. It shall be the Contractor's responsibility to verify such dimensions and details in the field and make necessary approved adjustments prior to construction or ordering of materials. Such variations shall not be cause for additional compensation for a change in the scope of the work, however, the Contractor will be paid for the quantity actually furnished at the unit price bid for the work.

The Contractor shall be advised of the roadway profile for this project including the uphill grade to the East of the bridge. This will require particular attention to placement of traffic control devices and signage for advanced warnings of the construction ahead as distance visibility is hindered.

SN. 036-0028 US. 34

FILE NAME = S:\GEN\DRAWING\STD\PLNS\SQUAD 8\68849\plan note.dgn	USER NAME = brucebm	DESIGNED -	REVISED -	STATE OF ILLINOIS DEPARTMENT OF TRANSPORTATION	COMMITMENTS & GENERAL NOTES	F.A.P. RTE.	SECTION	COUNTY	TOTAL SHEETS	SHEET NO.
	PLOT SCALE = 100.0000' / IN.	CHECKED -	REVISED -			313	(6BR-1)I	HENDERSON		2
PLOT DATE = 10/7/2008	DATE -	REVISED -			EMERGENCY BEAM REPLACEMENT	CONTRACT NO. 68849				
					FED. ROAD DIST. NO.	ILLINOIS FED. AID PROJECT				
				SCALE:	SHEET NO. OF SHEETS STA. TO STA.					

SUMMARY OF QUANTITIES

100% STATE SFTY - 2A
HENDERSON

CODE NO.	ITEM	UNIT	RURAL	TOTAL
40603335	HOT-MIX ASPHALT SURFACE COURSE, MIX "D", N50	TON	34.4	34.4
44001005	HOT-MIX ASPHALT SURFACE REMOVAL	SQYD	22	22
50400605	PRECAST PRESTRESSED CONCRETE DECK BEAMS (33" DEPTH)	SQFT	2402	2402
50900905	REMOVING AND RE-ERECTING EXISTING RAILING	FOOT	201	201
58100200	WATERPROOFING MEMBRANE SYSTEM	SQYD	285.3	285.3
58300100	PORTLAND CEMENT MORTAR FAIRING COURSE	FOOT	869	869
67100100	MOBILIZATION	LSUM	1	1
70100405	TRAFFIC CONTROL AND PROTECTION, STANDARD 701321	EACH	1	1
70100450	TRAFFIC CONTROL AND PROTECTION, STANDARD 701201	LSUM	1	1
70106500	TEMPORARY BRIDGE TRAFFIC SIGNALS	EACH	1	1
70106800	CHANGEABLE MESSAGE SIGN	CAL MO	2	2
70300520	PAVEMENT MARKING TAPE, TYPE III 4"	FOOT	1965	1965
70301000	WORKZONE PAVEMENT MARKING REMOVAL	<i>SQ FT</i>	1965	1965

SN. 036-0028 US. 34
over S.Henderson Crk.

FILE NAME = SN. 036-0028
*FILE: S:\GEN\DRAWING\STD5\PLNS\SQUAD14
BRIDGE CONTRACTS\Emergency PPC Beam
Repair\68849 SN.036-0028 US34 over
S.HendersonCrk.dgn

USER NAME = #USER#	DESIGNED - ---	REVISED - ---
PLOT SCALE = #SCALE#	DRAWN - ---	REVISED - ---
PLOT DATE = #DATE#	CHECKED - ---	REVISED - ---
	DATE - ---	REVISED - ---

**STATE OF ILLINOIS
DEPARTMENT OF TRANSPORTATION**

SUMMARY OF QUANTITIES

SCALE: _____ SHEET NO. ___ OF ___ SHEETS STA. _____ TO STA. _____

F.A.P. RTE. 313	SECTION (GBR-1)I	COUNTY HENDERSON	TOTAL SHEETS 3	SHEET NO. 3
EMERGENCY BEAM REPLACEMENT			CONTRACT NO. 68849	
FED. ROAD DIST. NO. 4 ILLINOIS FED. AID PROJECT				

SUMMARY OF QUANTITIES

100% STATE SFTY - 2A
HENDERSON

CODE NO.	ITEM	UNIT	RURAL	TOTAL
70400100	TEMPORARY CONCRETE BARRIER	FOOT	654	654
70400200	RELOCATE TEMPORARY CONCRETE BARRIER	FOOT	430	430
* 78005110	EPOXY PAVEMENT MARKING-LINE 4"	FOOT	1165	1165
78300100	PAVEMENT MARKING REMOVAL	SQFT	388	388
X0301424	SILICONE JOINT SEALER	FOOT	132	132
X0320047	REMOVAL OF EXISTING <i>← PRECAST PRESTRESSED CONCRETE</i> DECK BEAMS	SQFT	2408	2408
X0320887	POLYMER CONCRETE	CUFT	34.3	34.3
X7200201	WIDTH RESTRICTION SIGNING	L SUM	1	1
Z0030250	IMPACT ATTENUATORS, TEMPORARY(NON-REDIRECTIVE), TEST LEVEL 3	EACH	2	2
Z0030350	IMPACT ATTENUATORS, RELOCATE(NON-REDIRECTIVE), TEST LEVEL 3	EACH	2	2

* SPECIALTY ITEM

SN. 036-0028 US. 34
over S.Henderson Crk.

FILE NAME = SN. 036-0028
*FILE: S:\GEN\DRAP\T\STD\PLN\S\SQLAD14
*BRIDGE CONTRACTS\Emergency PPC Beam
Repair\68849 SN.036-0028 S.Henderson
Crk.dgn

USER NAME = #USER#	DESIGNED - ----	REVISED - ----
PLOT SCALE = #SCALE#	DRAWN - ----	REVISED - ----
PLOT DATE = #DATE#	CHECKED - ----	REVISED - ----
	DATE - ----	REVISED - ----

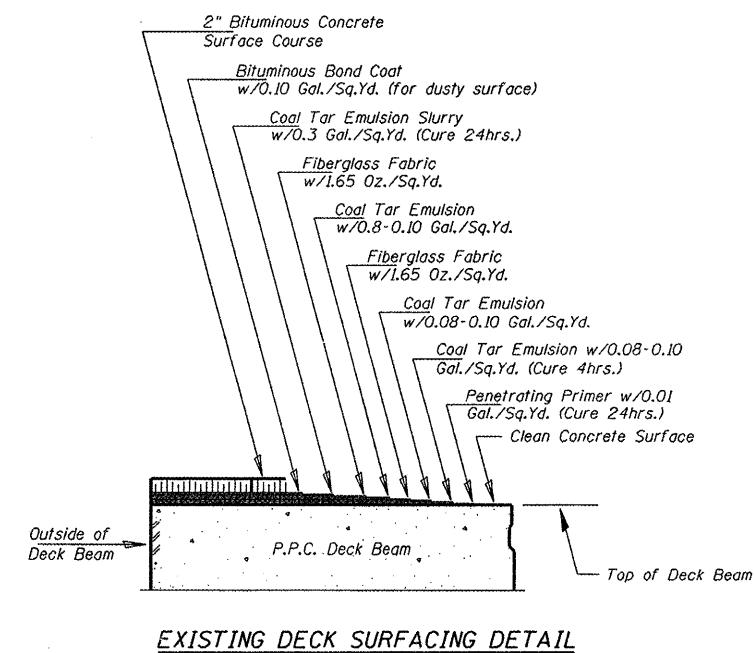
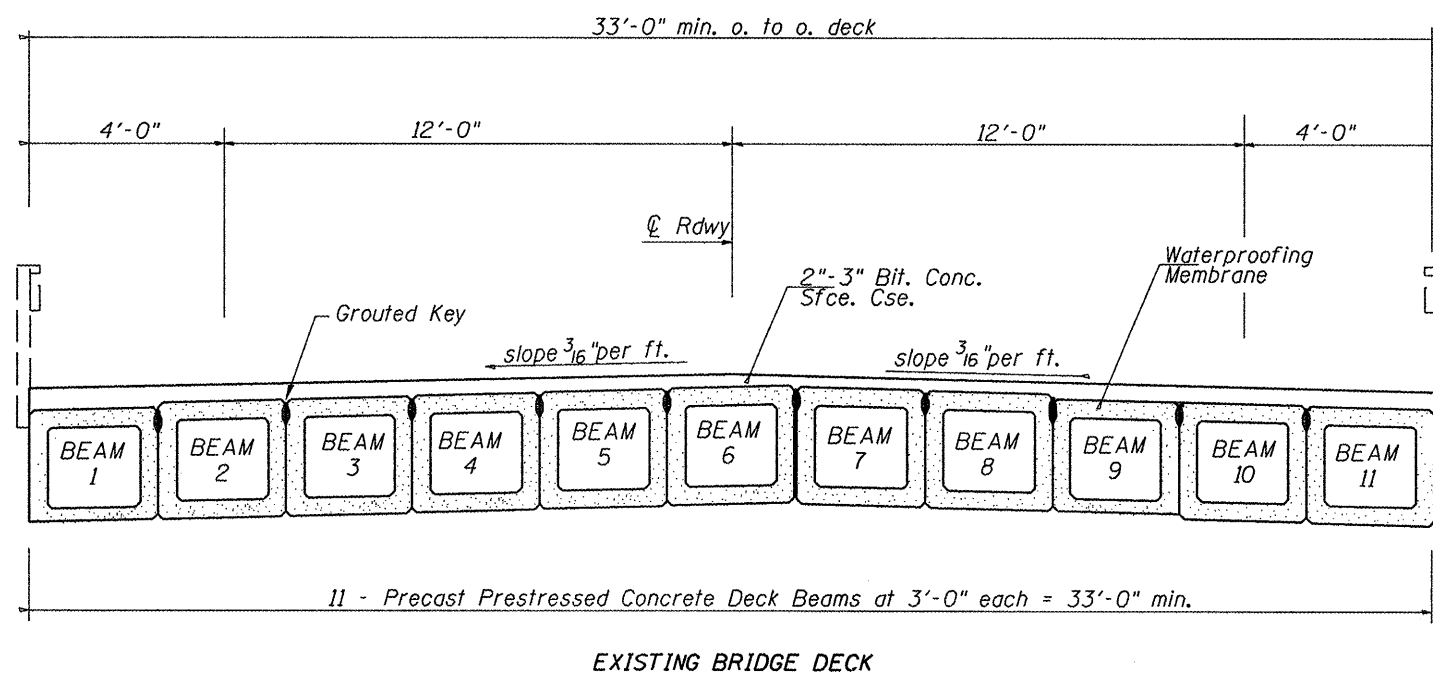
**STATE OF ILLINOIS
DEPARTMENT OF TRANSPORTATION**

SUMMARY OF QUANTITIES

SCALE: _____ SHEET NO. _____ OF _____ SHEETS STA. _____ TO STA. _____

F.A.P. RTE.	SECTION	COUNTY	TOTAL SHEETS	SHEET NO.
313	(GBR-1)I	HENDERSON	4	4
EMERGENCY BEAM REPLACEMENT		CONTRACT NO. 68849		
FED. ROAD DIST. NO. 4 [ILLINOIS] FED. AID PROJECT				

TYPICAL SECTION



FILE NAME =	USER NAME = #USER#	DESIGNED - ---	REVISED - ---	STATE OF ILLINOIS DEPARTMENT OF TRANSPORTATION	TYPICAL SECTION		F.A.P. RTE.	SECTION	COUNTY	TOTAL SHEETS	SHEET NO.	
#FILE#		DRAWN - ---	REVISED - ---		SCALE:	SHEET NO. ... OF ... SHEETS	STA. TO STA.	313	16BR-111	HENDERSON	14	5
		CHECKED - ---	REVISED - ---					CONTRACT NO. 68849				
		DATE -	REVISED - ---					FED. ROAD DIST. NO. 9	FED. AID PROJECT			

SCHEDULE OF QUANTITIES

EPOXY PAVEMENT MARKING LINE, 4" & PAVEMENT MARKING REMOVAL

LOCATION STA. TO STA.	PVMT. MRKG. LINE, 4"		PVMT. MRKG. REM.	
	WHITE LENGTH (FOOT)	YELLOW LENGTH (FOOT)	WHITE EDGELINE (SQ.FT.)	YELLOW SKIP DASH (SQ.FT.)
JOBSITE				
TOTAL	1165		388	

TEMPORARY TRAFFIC SIGNALS

LOCATION	TRAFFIC SIGNALS (EACH)
JOBSITE	1
TOTAL	1

PAVEMENT MIX SPECIFICATION

The following mixture requirements are applicable as replacement for the existing HMA Surface Removal quantity on the bridge deck.

MIXTURE USE(S):	**SURFACE COURSE
AC/PG:	SBS or SBR 70-22
RAP% (MAX):	10% Max
Design Air Voids:	4.0% @ N=70
Mixture Composition: (Graduation Mixture)	IL. 9.5 or 12.5
Friction Aggregate:	Mixture D (dolomite only)

** Individual lift thickness will be no less than 3x nominal maximum and no more than 6x nominal maximum aggregate size.

PAVEMENT MARKING TAPE TYPE III, 4" & WORKZONE PAVEMENT MARKING REMOVAL

LOCATION STA. TO STA.	PVMT. MRKG. TAPE, 4"		PVMT. MRKG. REM.
	WHITE LENGTH (FOOT)	YELLOW LENGTH (FOOT)	WORK ZONE PVMT. MRKG. REM. (FT.)
JOBSITE			
TOTAL	1965		1965

PPC DECK BEAMS (33" DEPTH)

LOCATION	BEAMS (SQ.FT.)
REMOVAL	2408
REPLACEMENT	2402

BRIDGE DECK CONSTRUCTION (STAGE 1 = NORTH SIDE)

REMOVING & RE-ERECTING EXISTING RAILING			
NORTH EDGE OF DECK	FOOT	SOUTH EDGE OF DECK	FOOT
Sta. 637+82 to Sta. 639+14.9	134.4	Sta. 639+14.9 to Sta. 639+81.5	66.6
TOTAL			201
HMA SURFACE REMOVAL			
STAGE 1 AREA	SQ.YD.	STAGE 2 AREA	SQ.YD.
Sta. 637+82 to Sta. 639+14.9	9.2	Sta. 639+14.9 to Sta. 639+81.5	12.8
TOTAL			22
PORTLAND CEMENT FAIRING COURSE			
STAGE 1 AREA	FOOT	STAGE 2 AREA	FOOT
Sta. 637+82 to Sta. 639+14.9	361.4	Sta. 639+14.9 to Sta. 639+81.5	507.6
TOTAL			869
WATERPROOFING MEMBRANE SYSTEM			
STAGE 1 AREA	SQ.YD.	STAGE 2 AREA	SQ.YD.
Sta. 637+82 to Sta. 639+14.9	118.9	Sta. 639+14.9 to Sta. 639+81.5	186.4
TOTAL			285.3
HMA SURFACE COURSE			
STAGE 1 AREA	TON	STAGE 2 AREA	TON
Sta. 637+82 to Sta. 639+14.9	14.5	Sta. 639+14.9 to Sta. 639+81.5	19.9
TOTAL			34.4

SILICONE JOINT SEALER

LOCATION	FOOT
BRIDGE JOINTS	132
TOTAL	132

POLYMER CONCRETE

LOCATION	CUFT
BRIDGE JOINTS	34.3
TOTAL	34.3

TRAFFIC CONTROL

LOCATION STA. TO STA.	TEMP. CONC. BARRIER (FT)	IMPACT ATTEN. TEMP. (EACH)	T.C.&P. STANDARD 701321 (EACH)	T.C.&P. STANDARD 701201 (EACH)	CHANGEABLE MESSAGE SIGN
Sta. 637+62 (Stage 1)	430				
(Stage 2) Sta. 640+01.5	654				
JOBSITE		2	1	1	2
TOTAL	654	2	1	1	2

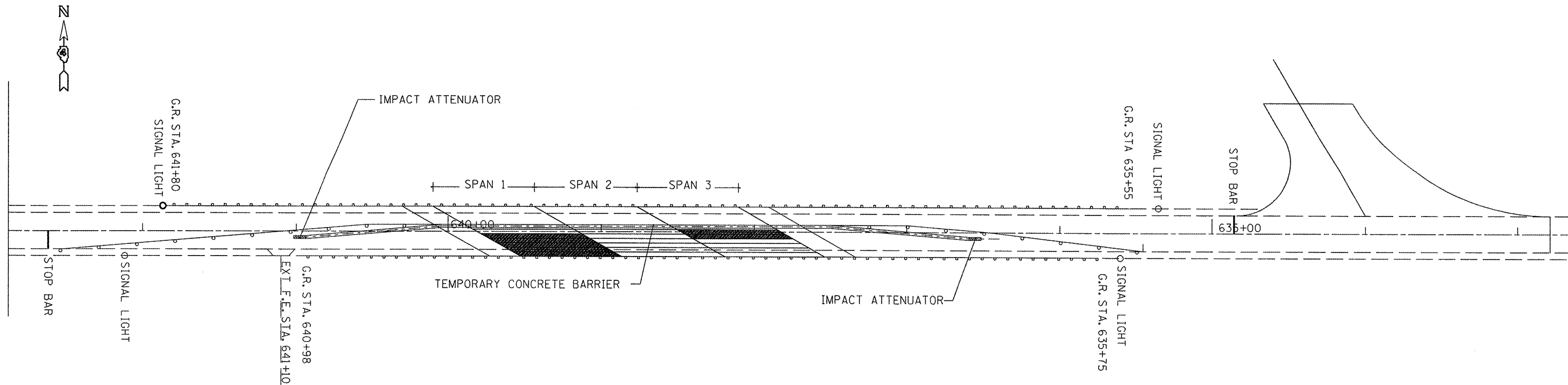
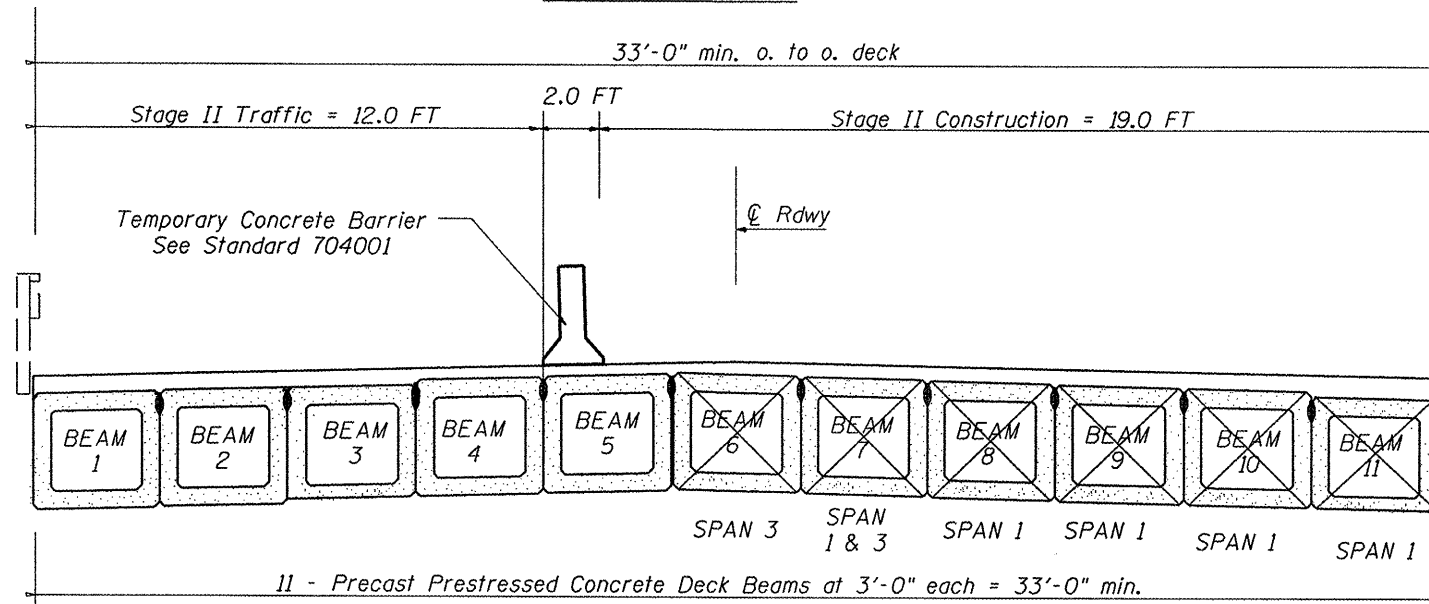
SN. 036-0028 US. 34
over S.Henderson Crk.

NOTE:
 Five W12-I103 signs, as described in the Special Provisions, will be required. Signs shall be placed at the intersections of US.34 with IL. routes 164, 94, & 67 as shown on Sheet 9. These signs shall be located at the direction of the Engineer.

High intensity flashing lights shall be placed on the RCA signs as directed by the Engineer.

The costs shall be included with the cost of the TRAFFIC CONTROL AND PROTECTION STANDARD 701321.

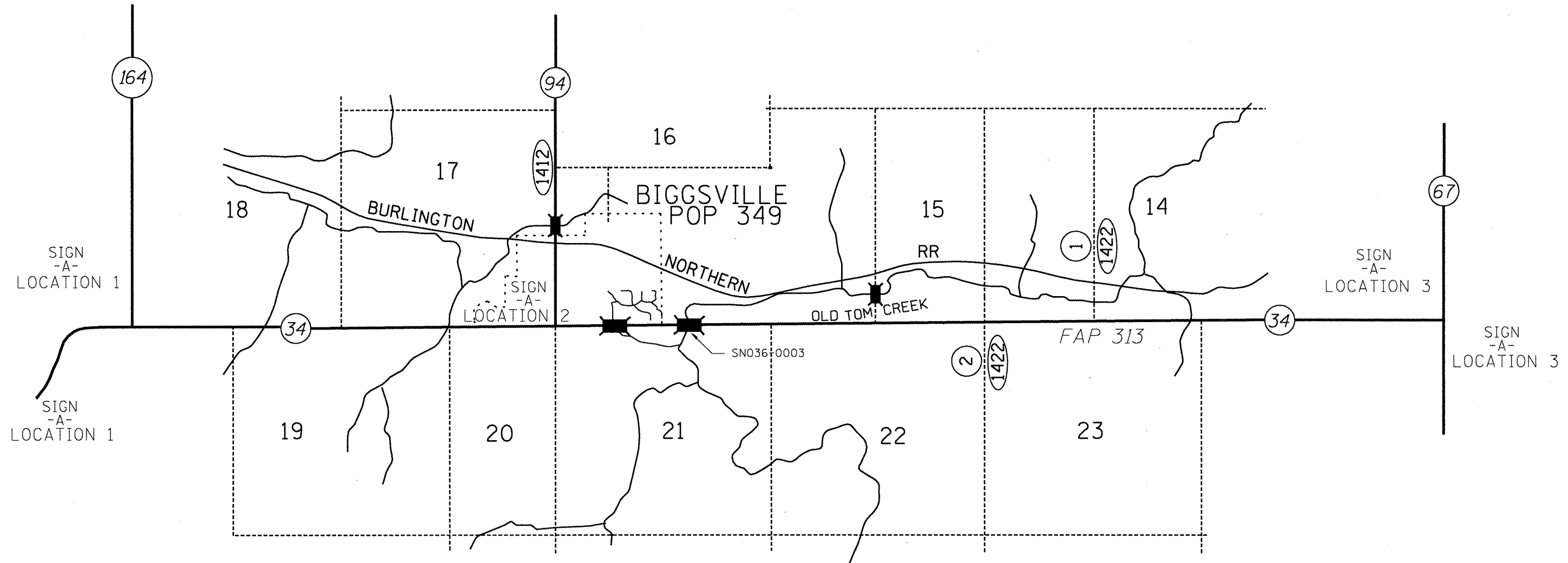
STAGE II



STAGE II CONSTRUCTION

FILE NAME : #FILE#	USER NAME : #USER#	DESIGNED - DRAWN - CHECKED - DATE -	REVISED - REVISED - REVISED - REVISED -	STATE OF ILLINOIS DEPARTMENT OF TRANSPORTATION	STAGING PLAN SHEET		F.A.P. RTE. 313	SECTION (6BR-1)I	COUNTY HENDERSON	TOTAL SHEETS 14	SHEET NO. 8
					SCALE:	SHEET NO. .. OF ... SHEETS	STA. TO STA.	FED. ROAD DIST. NO.	CONTRACT NO. 68849 FED. AID PROJECT		

NOTES
 Notification signs shall be posted where necessary indicating maximum width ahead of 12'-0" and Changeable Message Boards for traffic from both directions placed one week prior to work start date for public safety and awareness.



SN.036-0003 SIGNING DISTANCES

	SIGN -A-	SIGN -B-
LOCATION 1	2 EA.	NA
LOCATION 2	1 EA.	
LOCATION 3	2 EA.	
LOCATION 4		

CONTRACTOR PROVIDED

MAX. WIDTH
 XX-XX
 XX MILES

SIGN
 -A-

IDOT PROVIDED

US. 34

SEE SPECIAL PROVISIONS FOR SIGNING DETAILS.

SN.036-0028 US.34 OVER SOUTH HENDERSON CREEKCRK.

FILE NAME =	USER NAME = *USER*	DESIGNED - ---	REVISED - ---	STATE OF ILLINOIS DEPARTMENT OF TRANSPORTATION	WIDTH RESTRICTION SIGNING	F.A.P. RTE.	SECTION	COUNTY	TOTAL SHEETS	SHEET NO.
#FILE#		DRAWN - ---	REVISED - ---			313	16BR-101	HENDERSON	---	9
		CHECKED - ---	REVISED - ---			CONTRACT NO. 68849				
		PLOT SCALE = *SCALE*	DATE - ---			SCALE: _____ SHEET NO. ___ OF ___ SHEETS STA. _____ TO STA. _____ FED. ROAD DIST. NO. _____ ILLINOIS FED. AID PROJECT				
		PLOT DATE = *DATE*								

STATE OF ILLINOIS
DEPARTMENT OF TRANSPORTATION

GENERAL NOTES

The contractor is advised that the existing PPC Deck Beams are in a deteriorated condition with reduced load carrying capacity. It is the contractor's responsibility to account for the condition of the beams when developing construction procedures.

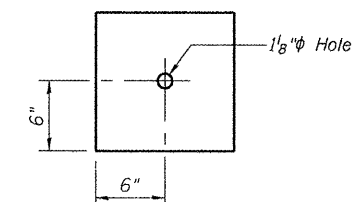
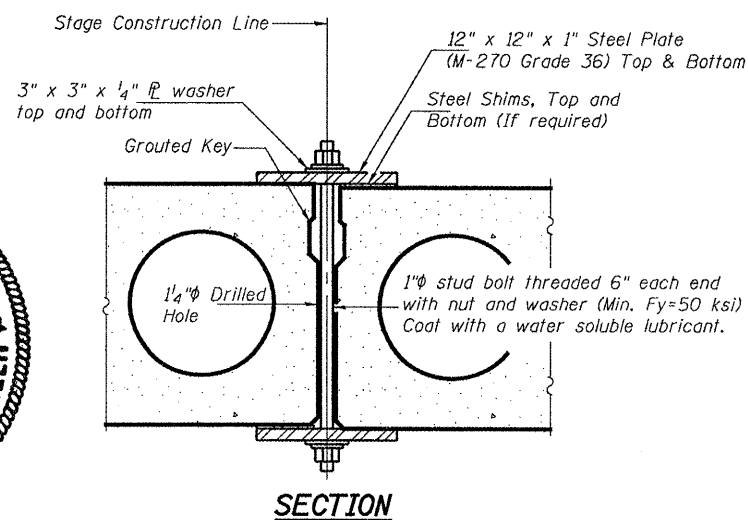
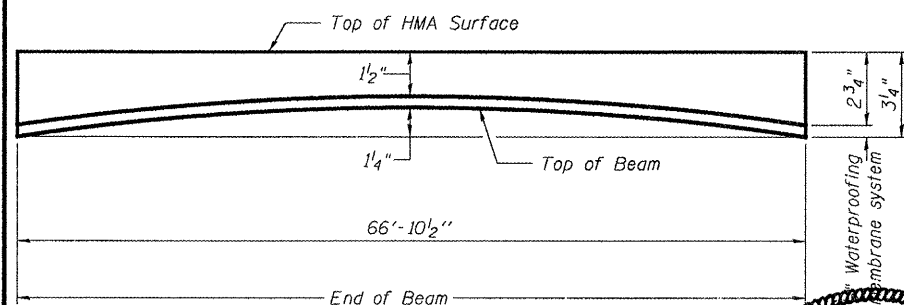
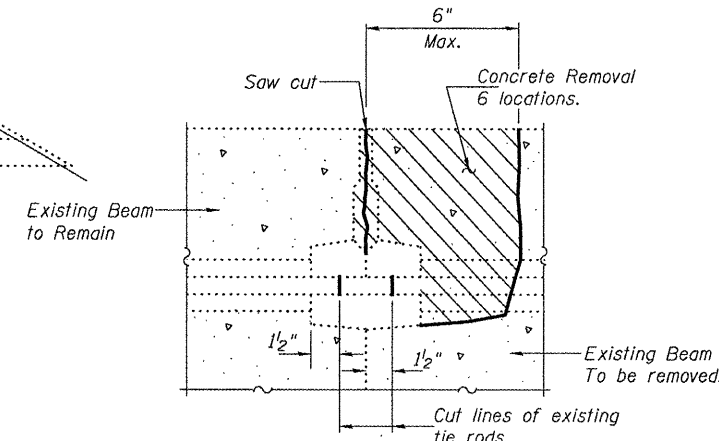
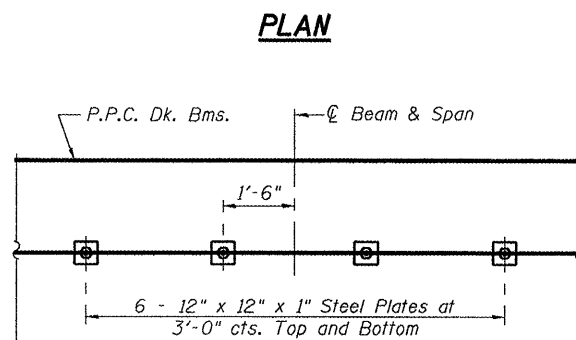
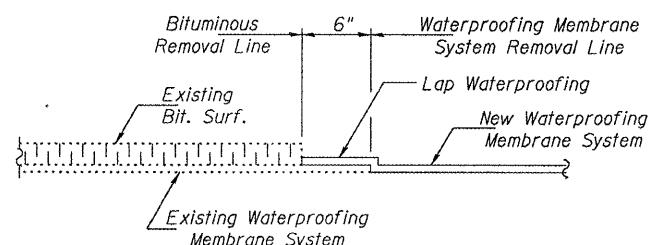
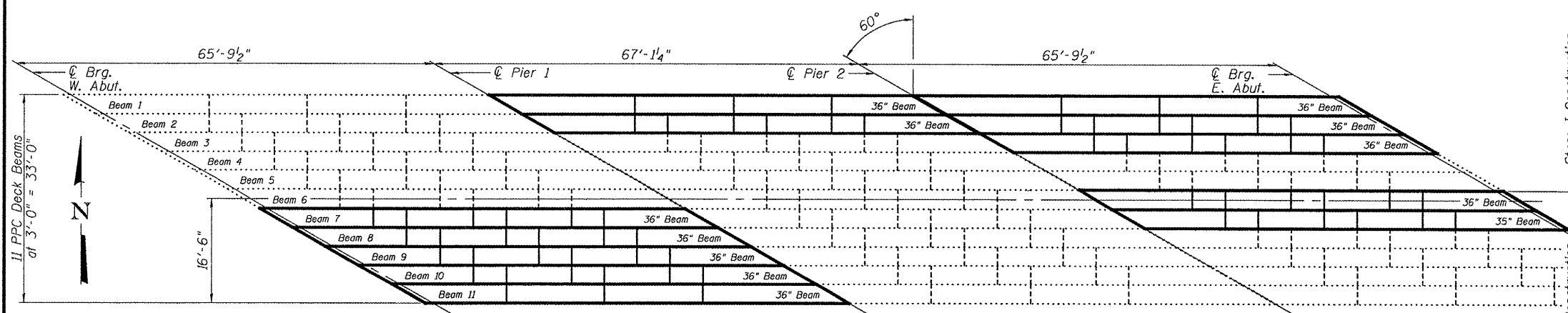
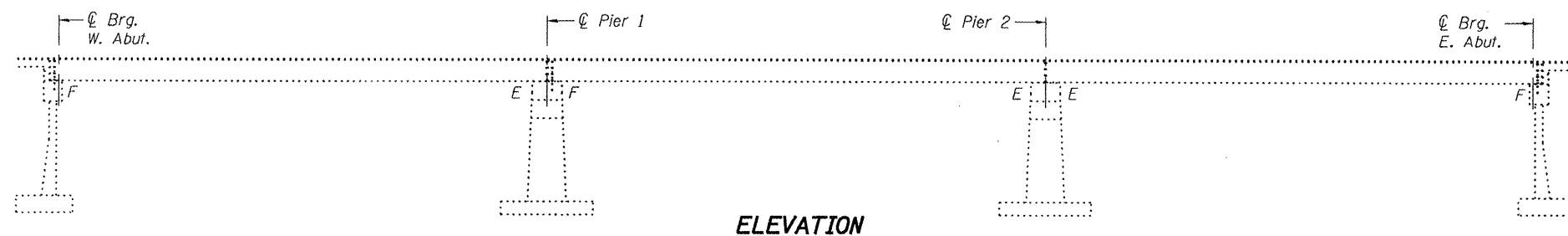
If the contractor's procedure for existing beam removal or placement of new beams involves placement of cranes or other heavy equipment on the bridge, a detailed procedure shall be submitted to the Engineer for approval. The procedure shall include calculations, prepared and sealed by an Illinois Licensed Structural Engineer, verifying that the equipment and procedure used will not overstress the new or existing beams. To distribute load to multiple beams and protect the existing surface, in all cases a double layer mat of heavy timbers shall be used at all times under crane tracks or wheels and any outriggers in the down position. If necessary, shims shall be used under the crane mat to ensure uniform contact with the underlying beams. If heavy equipment will be placed on new PPC deck beams, the following shall be done prior to placement of the timber mats: placement and tightening of transverse tie assemblies, grouting and curing the dowel rods 24 hours minimum and grouting and curing the shear keys.

Any damage done to the bridge during beam removal shall be repaired by the Contractor. Cost to be included in the cost of Removal of Existing PPC Deck Beams.

The top surface of the beams shall be finished according to the IDOT Manual for Fabrication of Precast Prestressed Concrete Products.

Plan dimensions and details relative to existing plans are subject to routine variations. The Contractor shall field verify existing dimensions and details affecting new construction and make necessary approved adjustments prior to construction or ordering of materials. Such variations shall not be cause for additional compensation for a change in scope of the work, however, the Contractor will be paid for the quantity actually furnished based upon the unit price bid for the work.

Temporary concrete barrier shall only be anchored into the overlay and not into the PPC Deck Beams.



Notes:
See Special Provisions for Stage Construction Precast Prestressed Concrete Deck Beams.
See Stage Construction Detail for traffic lane.
Cost is included with Precast Prestressed Concrete Deck Beams.

TOTAL BILL OF MATERIAL

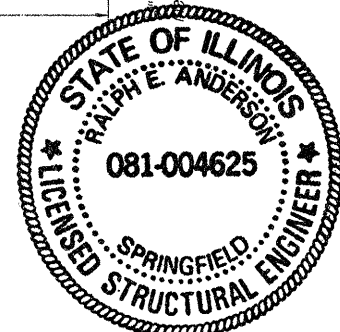
ITEM	UNIT	QUANTITY
HMA Surface Removal	Sq. Yd.	22.0
HMA Surface Course Mix D, N50	Tons	34.4
Removal of Existing PPC Deck Beams	Sq. Ft.	2408
PPC Deck Beams (33" Depth)	Sq. Ft.	2402
Waterproofing Membrane System	Sq. Yd.	285.3
PC Mortar Fairing Course	Foot	869
Removing and Re-erecting Existing Railing	Foot	201
Silicone Joint Sealant	Foot	132
Polymer Concrete	Cu. Ft.	34.3

**PLAN AND ELEVATION
SN 036-0028**

SHEET NO. 1 5 SHEETS	F.A. RTE. 45	SECTION (6BR-1)1	COUNTY Henderson	TOTAL SHEETS 14	SHEET NO. 10
	FED. ROAD DIST. NO. ILLINOIS FED. AID PROJECT			CONTRACT NO. 68849	

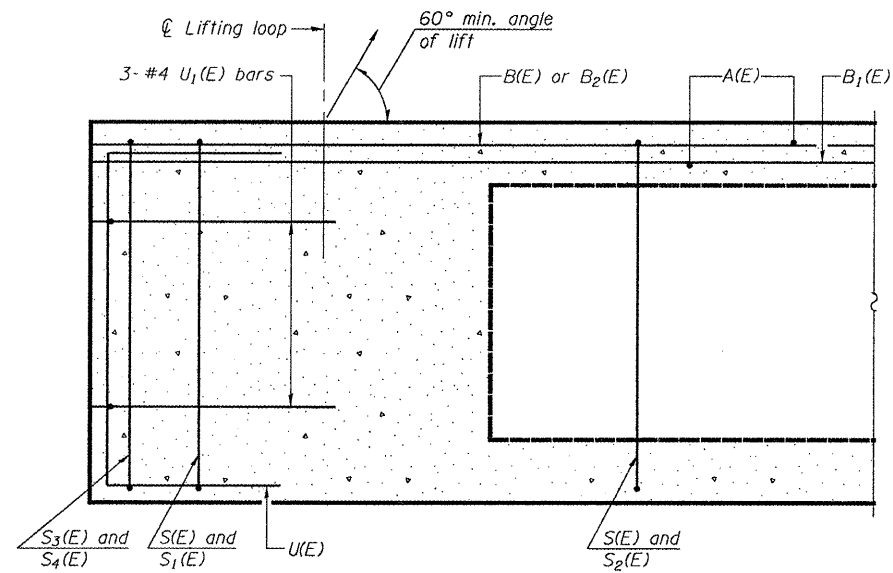
DESIGNED *Alan T. Holloway*
CHECKED *Victor H. Vel...*
DRAWN *[Signature]*
CHECKED *ATH VHV*

October 30, 2008
EXAMINED *[Signature]*
PASSED *[Signature]*

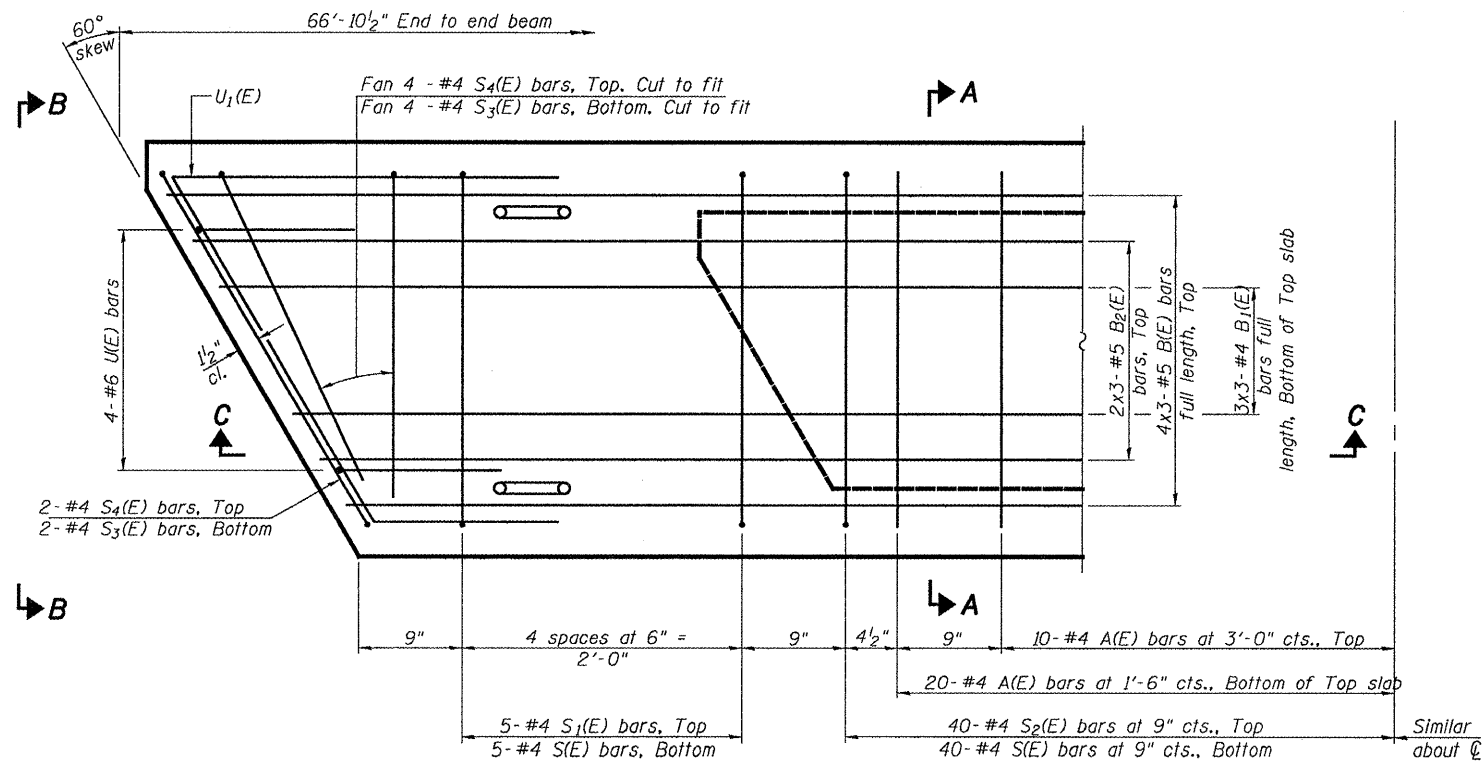


Expires: November 30, 2008

STATE OF ILLINOIS
DEPARTMENT OF TRANSPORTATION



SECTION C-C

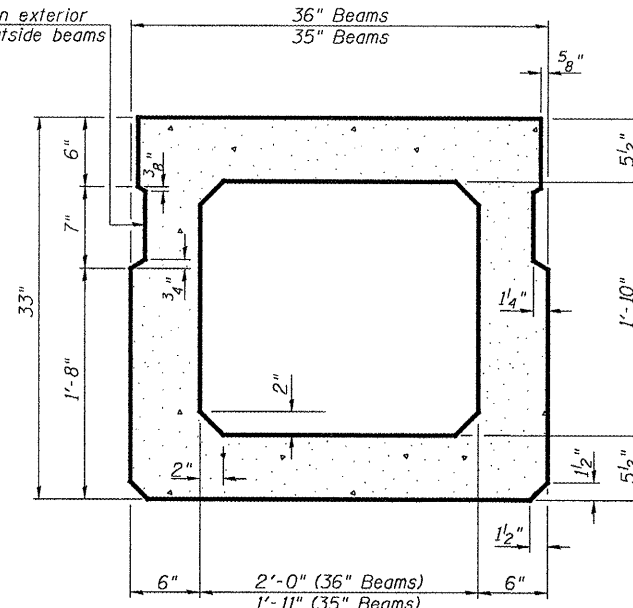


PLAN VIEW

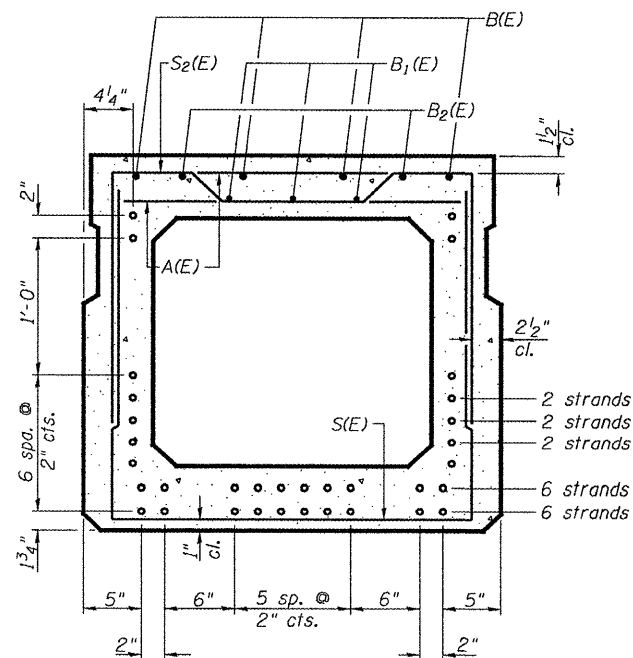
Note: Spacing of S(E) and S2(E) bars may be adjusted up to 4" in the immediate area of the transverse tie diaphragms to miss the block outs for the transverse ties.

DESIGNED	A.T.H.
CHECKED	V.H.V.
DRAWN	Drew Christopher
CHECKED	A.T.H. V.H.V.
PD-3336-R 5-16-08	

October 30, 2008	
EXAMINED	<i>Carl Prosser</i>
PASSED	<i>Ralph E. Anderson</i>
ENGINEER OF BRIDGES AND STRUCTURES	



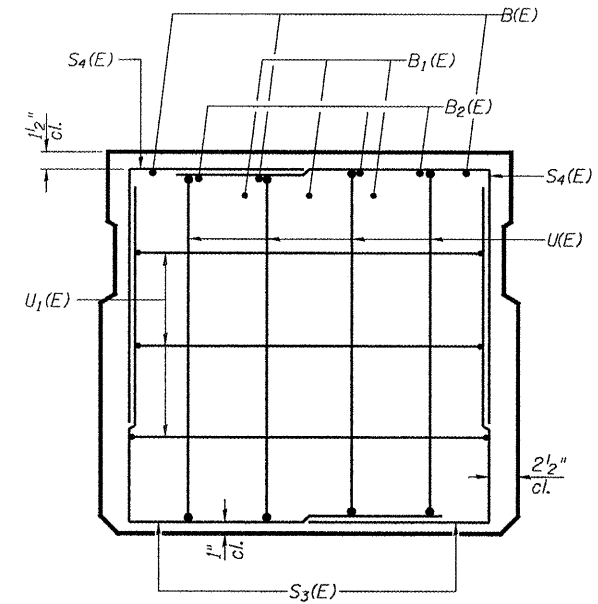
SECTION A-A
(Showing dimensions)



SECTION A-A

(Showing reinforcement and permissible strand locations)

Note: Place the number of strands specified in each row symmetrically about the centerline of beam in the permissible strand locations shown.



VIEW B-B

BAR LIST ONE BEAM ONLY
36" BEAM
(For information only)

Bar	No.	Size	Length	Shape
A(E)	60	#4	2'-7"	—
B(E)	12	#5	23'-8"	—
B1(E)	9	#4	23'-4"	—
B2(E)	6	#5	23'-8"	—
S(E)	90	#4	7'-5"	U
S1(E)	10	#4	6'-3"	U
S2(E)	80	#4	6'-6"	U
S3(E)	12	#4	5'-11"	U
S4(E)	12	#4	5'-4"	U
U(E)	8	#6	5'-0"	U
U1(E)	6	#4	11'-10"	U

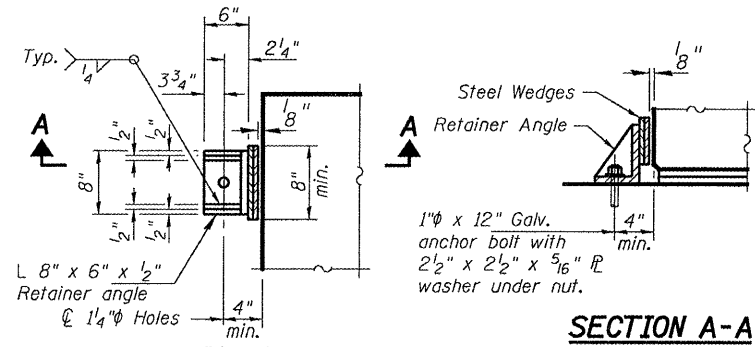
BAR LIST ONE BEAM ONLY
35" BEAM
(For information only)

Bar	No.	Size	Length	Shape
A(E)	60	#4	2'-7"	—
B(E)	12	#5	23'-8"	—
B1(E)	9	#4	23'-4"	—
B2(E)	6	#5	23'-8"	—
S(E)	90	#4	7'-4"	U
S1(E)	10	#4	6'-2"	U
S2(E)	80	#4	6'-5"	U
S3(E)	12	#4	5'-11"	U
S4(E)	12	#4	5'-4"	U
U(E)	8	#6	5'-0"	U
U1(E)	6	#4	11'-8"	U

BEAM DETAILS
SN 036-0028

SHEET NO. 2	F.A. RTE.	SECTION	COUNTY	TOTAL SHEETS	SHEET NO.
	45	(6BR-1)I	Henderson	14	11
5 SHEETS	FED. ROAD DIST. NO.		ILLINOIS	FED. AID PROJECT	
			CONTRACT NO. 68849		

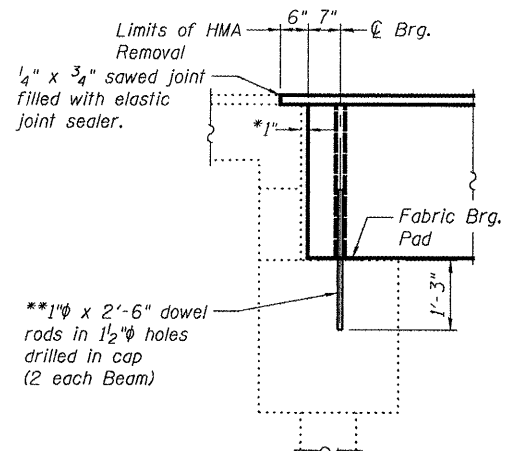
STATE OF ILLINOIS
DEPARTMENT OF TRANSPORTATION



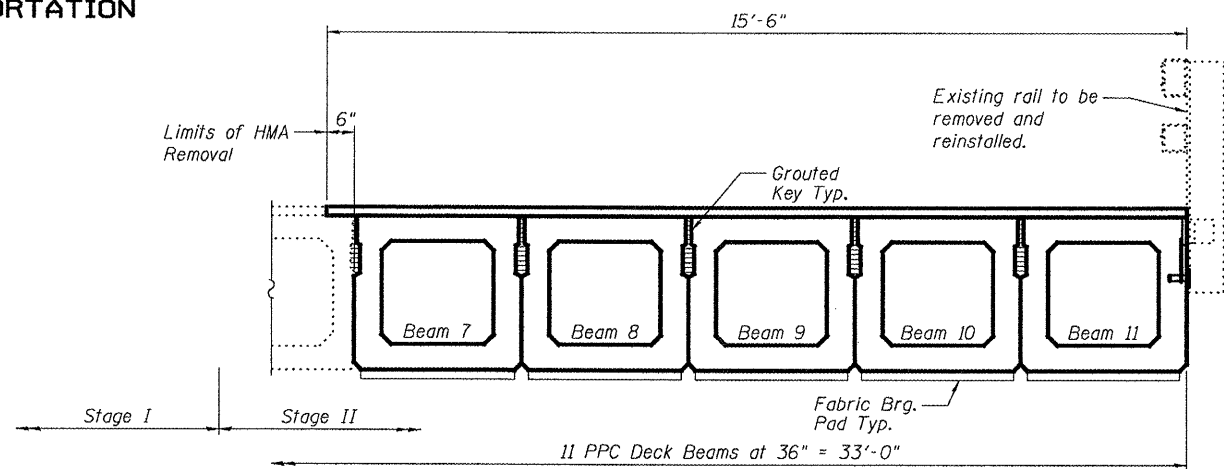
SECTION A-A

EXPANSION END SIDE RETAINER DETAIL
(Outside face only)

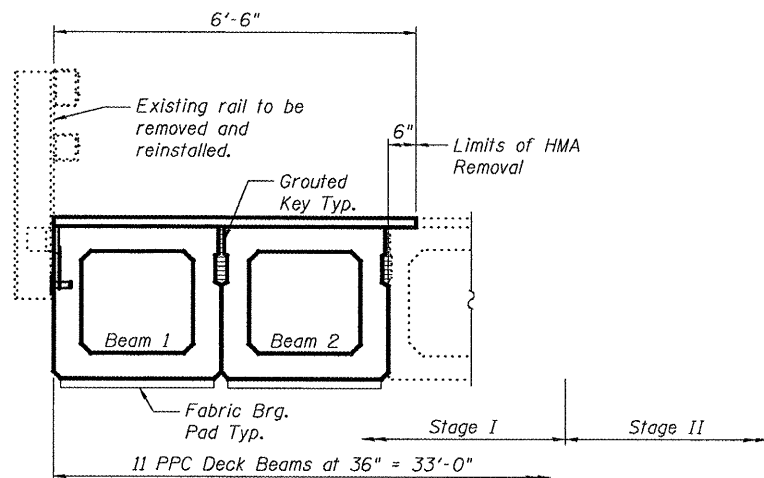
Anchor bolts may be cast into the masonry or approved threaded rod may be placed in drilled holes and grouted in place. Cost of retainer and accessories are included with Precast Prestressed Concrete Deck Beams.



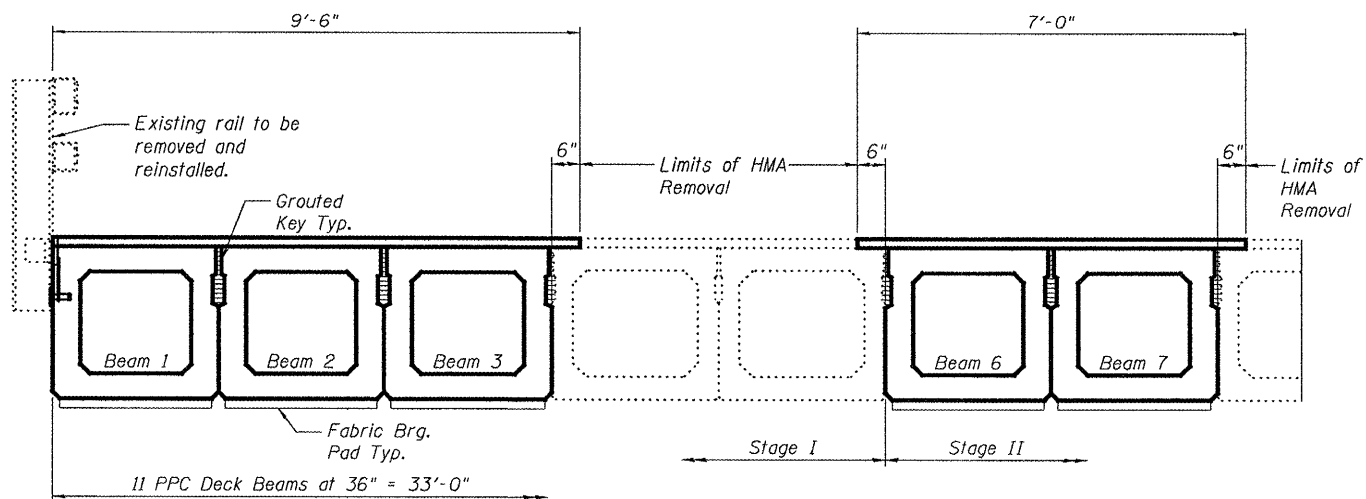
TYPICAL ABUTMENT SECTION



PARTIAL SPAN 1 DECK CROSS SECTION



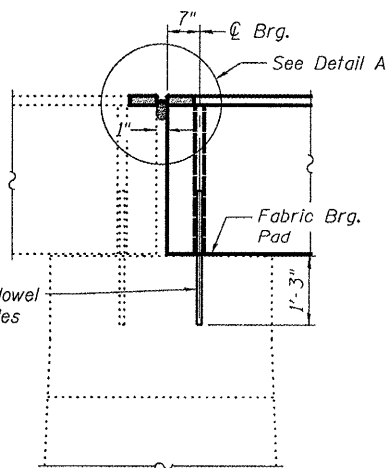
PARTIAL SPAN 2 DECK CROSS SECTION



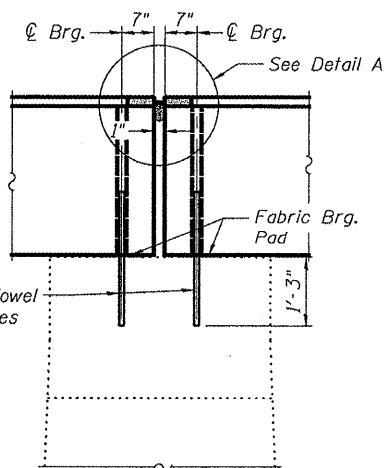
PARTIAL SPAN 3 DECK CROSS SECTION

DECK AND JOINT DETAILS
SN 036-0028

*1" Joint shall be filled with non-shrink grout. Dimension may vary to accommodate tolerance in beam lengths.
**Existing dowel rods are to be burned off, ground flush, and sealed with epoxy prior to placement of new beams. Cost included in Removal of Existing PPC Deck Beams. After beams have been erected holes shall be drilled into cap and dowel rods placed. Dowel holes shall be filled with non-shrink grout to top of beam and allowed to cure a minimum of 24 hours prior to grouting the shear keys.

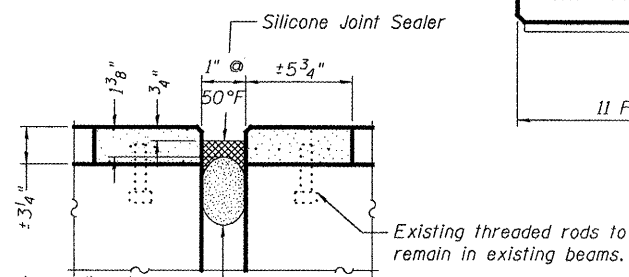


TYPICAL PIER SECTION
(Showing New beams at one side only)



TYPICAL PIER SECTION
(Showing New beams at both sides)

Note:
Removal of existing neoprene expansion joints included in the cost of Polymer Concrete Nosing. Silicone joint sealer and polymer concrete to be placed out to out of the bridge.



DETAIL A

DESIGNED	A.T.H.
CHECKED	V.H.V.
DRAWN	Drew Christopher
CHECKED	A.T.H. V.H.V.

EXAMINED	October 30, 2008
PASSED	<i>Carl Ramsey</i> ENGINEER OF STRUCTURAL SERVICES
	<i>Ralph E. Anderson</i> ENGINEER OF BRIDGES AND STRUCTURES

Backer Rod having a diameter 25% greater than the joint opening at the time of installation.

SHEET NO. 4	F.A. RTE.	SECTION	COUNTY	TOTAL SHEETS	SHEET NO.
	45	(6BR-1)I	Henderson	14	13
5 SHEETS	FED. ROAD DIST. NO.		ILLINOIS FED. AID PROJECT	CONTRACT NO. 68849	

