

F.A. RTE.	SECTION	COUNTY	TOTAL SHEETS	SHEET NO.
	D4 MEDIAN YIELD BARS	VARIOUS	4	1
FED. ROAD DIST. NO. 4	ILLINOIS	CONTRACT NO. 68851		

STATE OF ILLINOIS
DEPARTMENT OF TRANSPORTATION
DIVISION OF HIGHWAYS

D-94-010-09

**PROPOSED
HIGHWAY PLANS**

**VARIOUS ROUTES
D4 MEDIAN YIELD BARS 2009
PROJECT
PAVEMENT MARKING
DISTRICT WIDE**

C-94-009-09

INDEX OF SHEETS

- 1 COVER SHEET
- 2 SUMMARY AND SCHEDULE OF QUANTITIES
- 3 MEDIAN YIELD BAR DETAIL
- 4 TRAFFIC CONTROL AND PROTECTION DETAIL

LIST OF STANDARDS
701901-01
780001-02

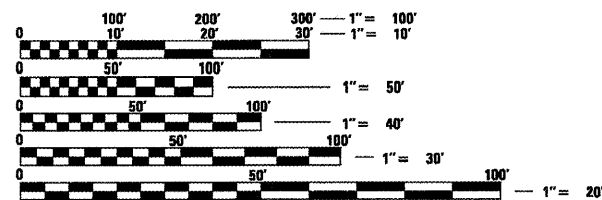
DESCRIPTION OF WORK

This improvement includes the placement of preformed pavement markings letters and symbols for Yield bars at various intersections.

PROPOSED IMPROVEMENT

Placement of median yield bars at the following intersections:

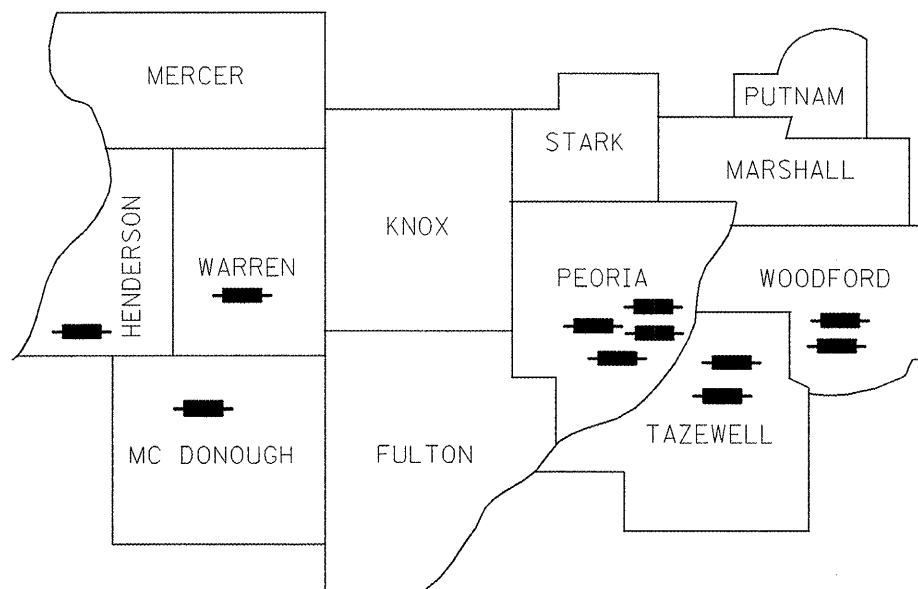
- IL 29 and Knox St. Peoria Co., Rome
- IL 29 and Cambron Ln. Peoria Co., Rome
- IL 29 and Washington St. Peoria Co., Rome
- US 24 and Kingston Mines Rd. Peoria Co., Kingston Mines
- US 34 and 185th St. Warren Co., Warren
- US 34 and Knox Rd. Henderson Co., Gulfport
- IL 116 and Fauber Rd. Tazewell Co., East Peoria
- IL 116 and Spring Creek Tazewell Co., East Peoria
- IL 116 and IL 251 (North) Woodford Co., Woodford
- IL 116 and IL 251 (South) Woodford Co., Woodford
- US 67 and IL 9 McDonough Co., Good Hope



FULL SIZE PLANS HAVE BEEN PREPARED USING STANDARD ENGINEERING SCALES. REDUCED SIZED PLANS WILL NOT CONFORM TO STANDARD SCALES. IN MAKING MEASUREMENTS ON REDUCED PLANS, THE ABOVE SCALES MAY BE USED.

J.U.L.I.E.
JOINT UTILITY LOCATION INFORMATION FOR EXCAVATION
1-800-892-0123
OR 811

PROJECT ENGINEER MICHAEL J. BOYER
PROJECT MANAGER SEAN P. COYLE
CONTRACT NO. 68851
CATALOG NO. 034112-00D



STATE OF ILLINOIS
DEPARTMENT OF TRANSPORTATION
DIVISION OF HIGHWAYS

SUBMITTED *Oct 17, 2008*
John E. [Signature]
DEPUTY DIRECTOR OF HIGHWAYS, REGION ENGINEER

December 5, 2008
Eric E. [Signature]
ENGINEER OF DESIGN AND ENVIRONMENT

December 5, 2008
Christine M. [Signature]
DIRECTOR OF HIGHWAYS, CHIEF ENGINEER

PRINTED BY THE AUTHORITY
OF THE STATE OF ILLINOIS

SUMMARY OF QUANTITIES		CONSTRUCTION CODE		
CODE NO.	ITEM	UNITS	TOTAL QUANTITY	VARIOUS CO.
				SFTY-1D
				100% STATE
67100100	MOBILIZATION	L SUM	1	1
70101800	TRAFFIC CONTROL AND PROTECTION, (SPECIAL)	L SUM	1	1
78003100	PREFORMED PLASTIC PAVEMENT MARKING, TYPE B - LETTERS AND SYMBOLS	SQ FT	1311.2	1311.2

Location	County	City	78003100 PREF PL PM TB LTR-SYM					
			YIELD Qty	Unit Conversion 44.6 Sq Ft/ YIELD	Sq Ft	Triangle	Unit Conversion 3 Sq Ft / Triangle	Sq Ft
IL 29 and Knox St.	Peoria	Rome	2	44.6	89.2	10	3	30
IL 29 and Cambron Ln.	Peoria	Rome	2	44.6	89.2	10	3	30
IL 29 and Washington St.	Peoria	Rome	2	44.6	89.2	10	3	30
US 24 and Kingston Mines	Peoria	Kingston Mines	2	44.6	89.2	10	3	30
US 34 and Knox Rd.	Henderson	Gulfport	2	44.6	89.2	10	3	30
US 34 and 185th St.	Warren	Warren	2	44.6	89.2	10	3	30
IL 116 and Fauber Rd.	Tazewell	East Peoria	2	44.6	89.2	10	3	30
IL 116 and Spring Creek	Tazewell	East Peoria	2	44.6	89.2	10	3	30
IL 116 and IL 251 (South)	Woodford	Woodford	2	44.6	89.2	10	3	30
IL 116 and IL 251 (North)	Woodford	Woodford	2	44.6	89.2	10	3	30
US 67 and IL 9	McDonough	Good Hope	2	44.6	89.2	10	3	30
		Total	22	490.6	981.2	110	33	330

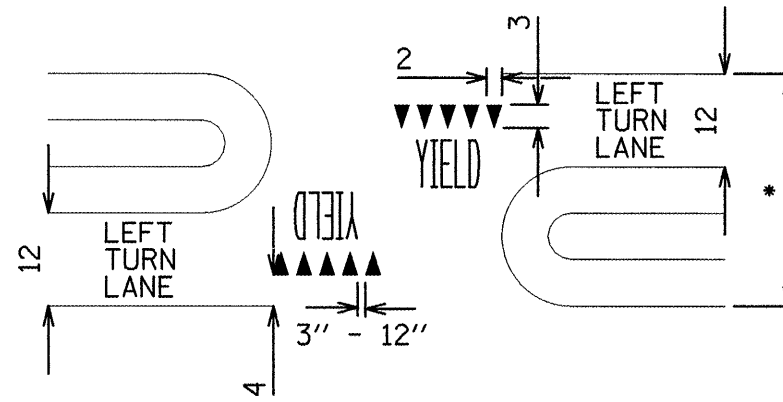
67100100	MOBILIZATION
L SUM	1

70101800	TRAFFIC CONTROL AND PROTECTION (SPECIAL)
L SUM	1

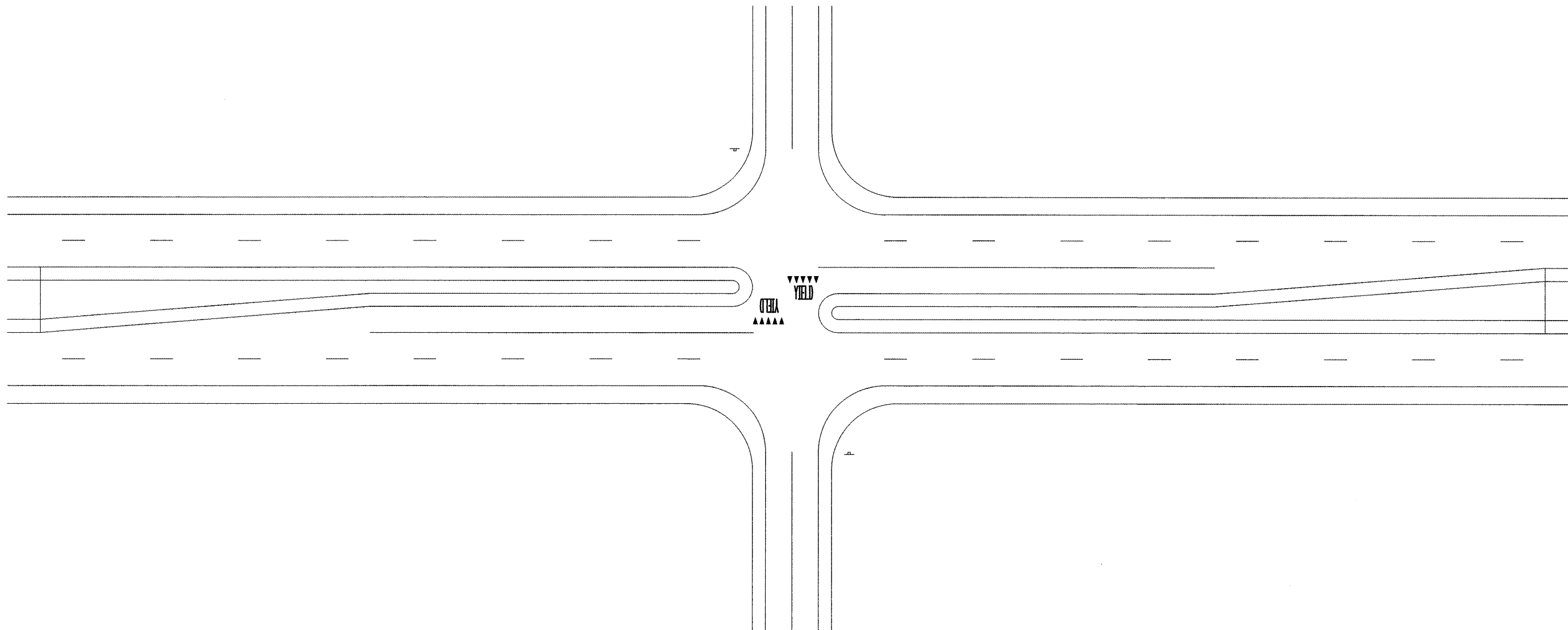
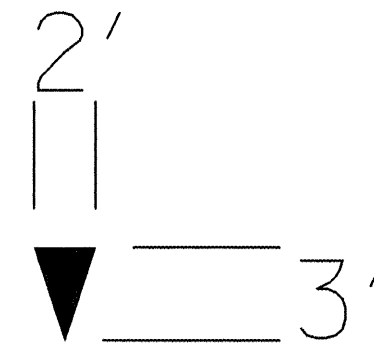
COMMITMENTS
 Commitments are not to be altered without the written approval of all of the parties to which the commitment was made.

SPECIAL NOTES

1. Isosceles triangles symbols will be placed such that the tips are 6" from the adjacent triangle.
2. The following will apply to the isosceles triangles:
 - A. A minimum of 5 triangles shall be placed for each through lane crossing the median.
 - B. Dimensions of the triangles shall be 2 feet at the base and height equal to 1.5 times the base, 3 feet.
3. Triangles will be placed 4 feet in advance of and parallel to the nearest lane line.
4. Large letters and symbols will be utilized for "YIELD"



* MINIMUM MEDIAN WIDTH = 30 FT

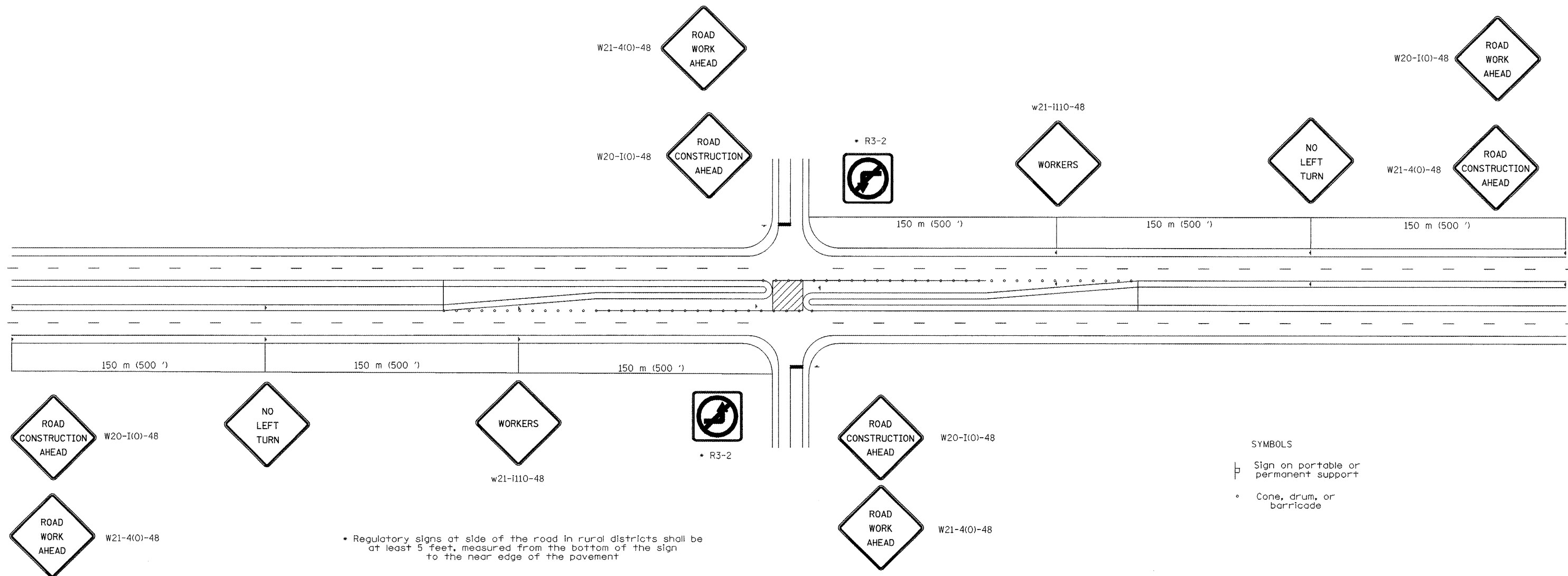


FILE NAME =	USER NAME = boyernj	DESIGNED -	REVISED -
ca\projects\safety\misc\median yield		DRAWN -	REVISED -
	PLOT SCALE = 100,0000' / IN.	CHECKED -	REVISED -
	PLOT DATE = 10/16/2008	DATE -	REVISED -

**STATE OF ILLINOIS
DEPARTMENT OF TRANSPORTATION**

MEDIAN YIELD BAR DETAIL			
SCALE:	SHEET NO. OF SHEETS	STA.	TO STA.

F.A. RTE.	SECTION	COUNTY	TOTAL SHEETS	SHEET NO.
	D4 MEDIAN YIELD BARS	VARIOUS	4	3
CONTRACT NO. 68851				
FED. ROAD DIST. NO. 4 ILLINOIS FED. AID PROJECT				



SYMBOLS

▮ Sign on portable or permanent support

• Cone, drum, or barricade

FILE NAME = c:\projects\safety\misc\median_yield	USER NAME = boyermj	DESIGNED -	REVISED -	STATE OF ILLINOIS DEPARTMENT OF TRANSPORTATION	TRAFFIC CONTROL DETAIL TRAFFIC CONTROL AND PROTECTION (SPECIAL)		F.A. RTE.	SECTION	COUNTY	TOTAL SHEETS	SHEET NO.
	PLOT SCALE = 100.0000' / IN.	DRAWN -	REVISED -				D4 MEDIAN YIELD BARS	VARIOUS	4	4	
	PLOT DATE = 10/16/2008	CHECKED -	REVISED -				CONTRACT NO. 68851				
	DATE -	REVISED -		SCALE:	SHEET NO. OF SHEETS	STA. TO STA.	FED. ROAD DIST. NO. 4 ILLINOIS FED. AID PROJECT				