

STATE OF ILLINOIS  
DEPARTMENT OF TRANSPORTATION  
DIVISION OF HIGHWAYS

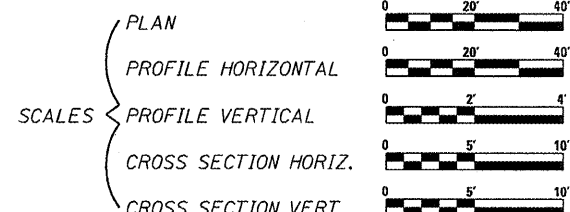
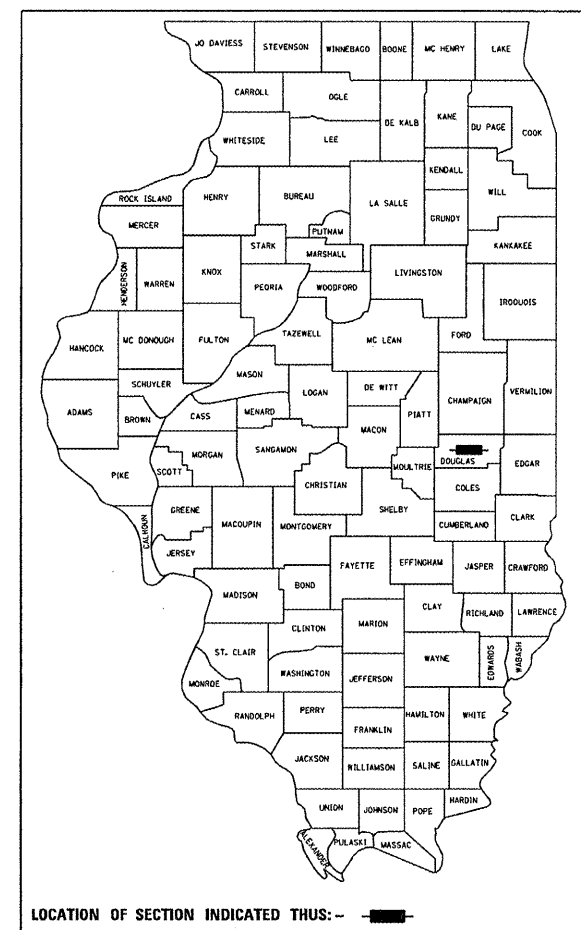
PLANS FOR PROPOSED  
FEDERAL AID HIGHWAY

PROJECT BRF-0323(024)  
FAP ROUTE 323 (US 36)  
SECTION 145BR-1  
DOUGLAS COUNTY  
C-95-037-04  
BRIDGE REPLACEMENT  
OVER HACKETT BRANCH 2.4 MILE E OF I-57

F.A.P. RTE.	SECTION	COUNTY	TOTAL SHEETS	SHEET NO.
323	145BR-1	DOUGLAS	39	1
CONTRACT NO. 70393			+ 4	
D-95-036-04			43	

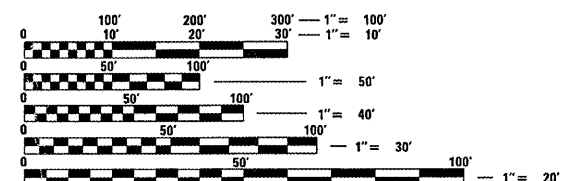
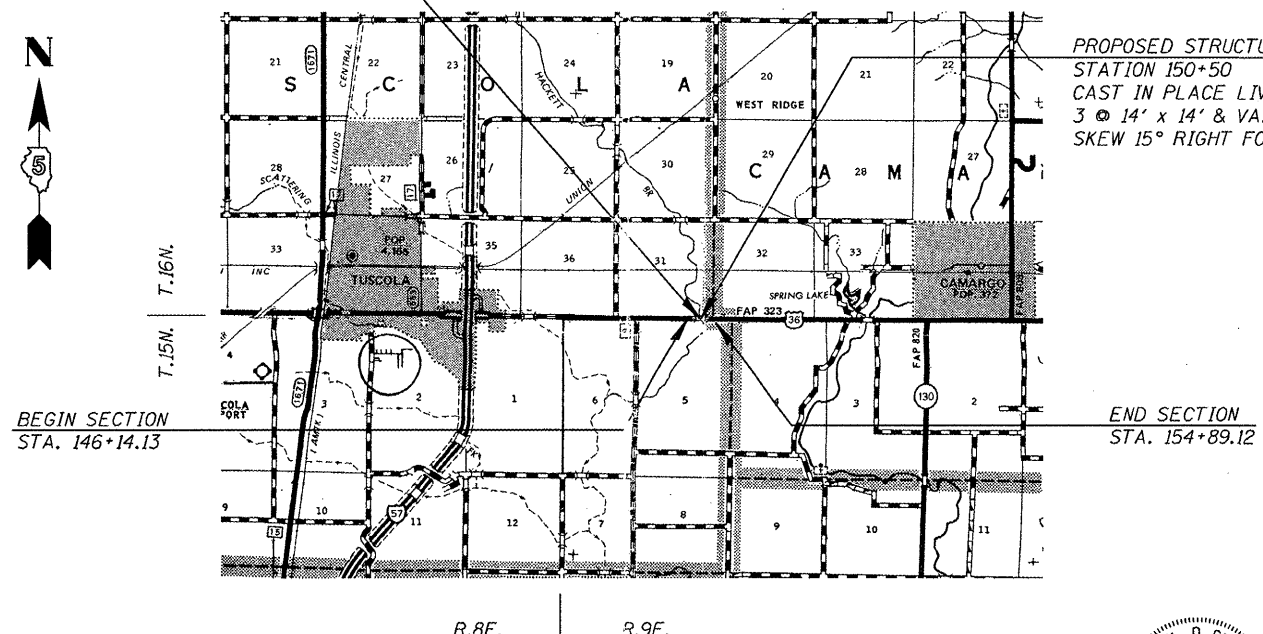
INDEX OF SHEETS

SEE SHEET NO. 2 FOR INDEX OF SHEETS  
SEE SHEET NO. 2 FOR LIST OF ILLINOIS D.O.T. HIGHWAY STANDARDS



REMOVAL OF EXISTING STRUCTURE NO. 021-0021  
STATION 150+57-SINGLE SPAN PPC DECK BEAM  
BRIDGE ON CLOSED ABUTMENT  
43-6" BK TO BK OF ABUTMENT

PROPOSED STRUCTURE NO. 021-2026  
STATION 150+50  
CAST IN PLACE LIVE LOAD CULVERT  
3 @ 14' x 14' & VAR.  
SKEW 15° RIGHT FORWARD

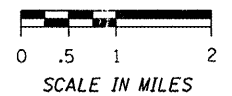


FULL SIZE PLANS HAVE BEEN PREPARED USING STANDARD  
ENGINEERING SCALES. REDUCED SIZED PLANS WILL NOT  
CONFORM TO STANDARD SCALES. IN MAKING MEASUREMENTS  
ON REDUCED PLANS, THE ABOVE SCALES MAY BE USED.

J.U.L.I.E.  
JOINT UTILITY LOCATION INFORMATION FOR EXCAVATION  
1-800-892-0123

CURRENT ADT = 4,350 (2005)

LENGTH OF SECTION: 874.99 FEET = 0.166 MILES



CUMMINS ENGINEERING CORPORATION  
SPRINGFIELD, ILLINOIS



*Michael D. Cummins* (6/29/07)  
ILLINOIS PROFESSIONAL NO. 43244  
(Expires 11/30/07)

STATE OF ILLINOIS  
DEPARTMENT OF TRANSPORTATION  
DIVISION OF HIGHWAYS

SUBMITTED 0077 20 08

*[Signature]*  
DEPUTY DIRECTOR OF HIGHWAYS, REGION 3 ENGINEER

December 5, 2008  
*Eric E. Hamm*  
Interim ENGINEER OF DESIGN AND ENVIRONMENT

December 5, 2008  
*Christine M. Hamm*  
DIRECTOR OF HIGHWAYS, CHIEF ENGINEER

PRINTED BY THE AUTHORITY  
OF THE STATE OF ILLINOIS

PROJECT ENGINEER: Nancy Fasig (217) 465-4181  
CONSULTANT LIAISON: Jason Strults (217) 465-4181

CONTRACT NO. 70393