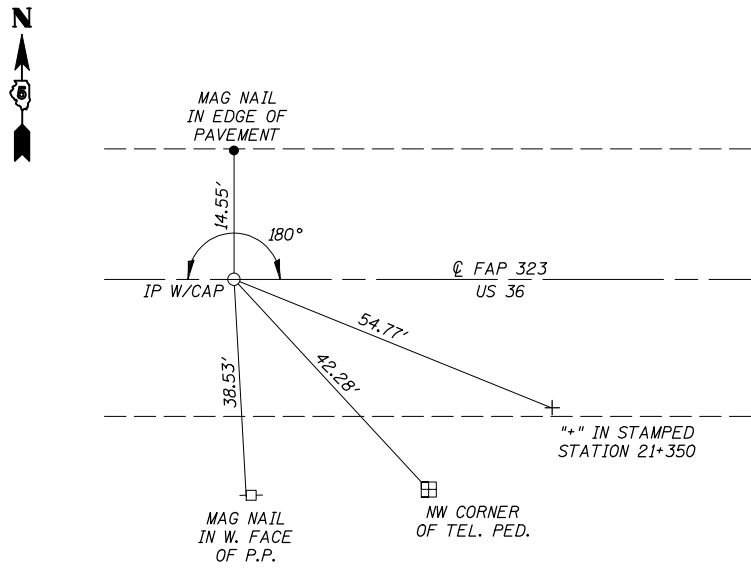
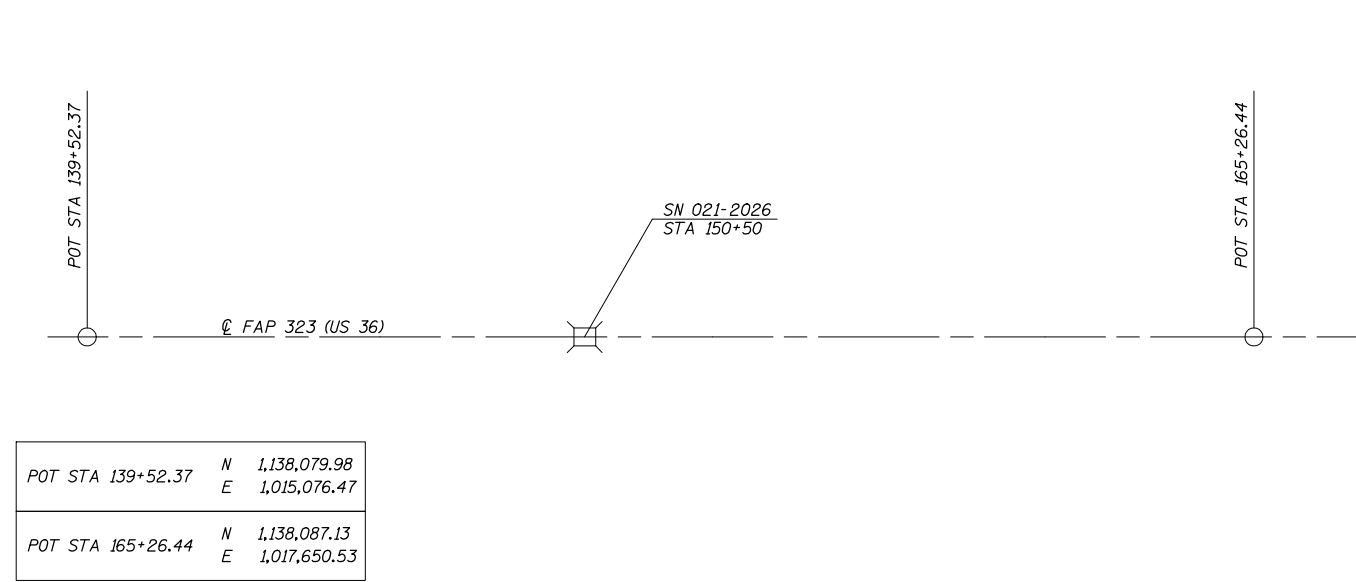


F.A.P. RTE.	SECTION	COUNTY	TOTAL SHEETS	SHEET NO.
323	145BR-1	DOUGLAS	39	11
FED. ROAD DIST. NO. ILLINOIS FED. AID PROJECT				
<b>CONTRACT NO. 70393</b>				

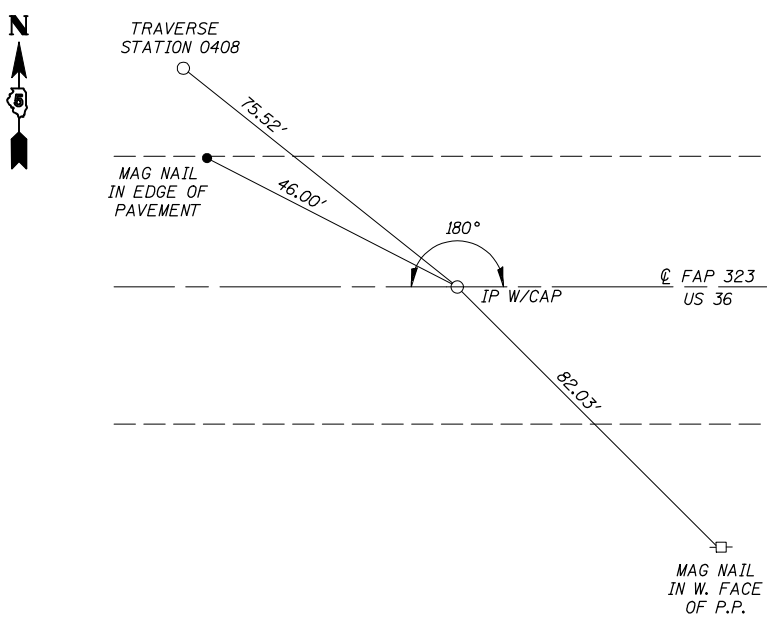
**POT STA. 139+52.37  
IRON PIN (W/CAP)**



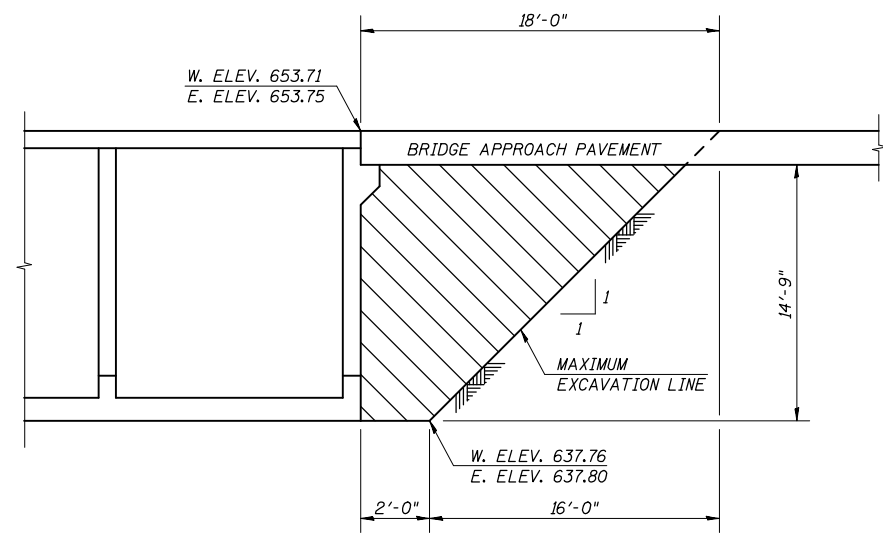
**ALIGNMENT LAYOUT**



**POT STA. 165+26.44  
IRON PIN (W/CAP)**



**DETAIL OF POROUS GRANULAR BACKFILL  
AT STRUCTURE NO. 021-2026  
STATION 150+50**



 PAY LIMITS OF POROUS GRANULAR BACKFILL - CA 6

NOTES: POROUS GRANULAR BACKFILL SHALL EXTEND 1'-4" OUTSIDE OF THE EDGE OF THE BRIDGE APPROACH PAVEMENT. DIMENSIONS SHOWN ARE AT RIGHT ANGLES.

**ALIGNMENT, CROSS TIES  
POROUS GRANULAR BACKFILL**  
FAP ROUTE 323 (US 36)  
SECTION 145 BR-1  
DOUGLAS COUNTY

CUMMINS ENGINEERING CORPORATION  
JOB #: 2114.6  
FILE: 21146XTIES.DGN  
DATE: 5/2/07