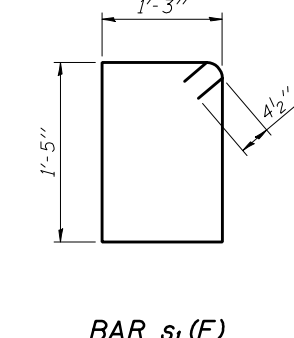
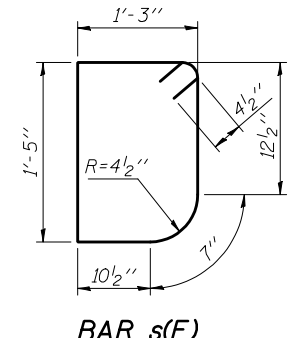
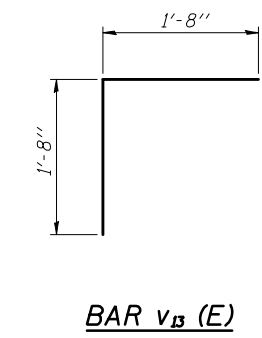
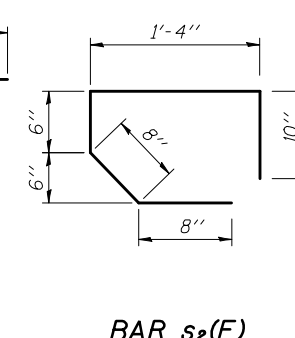
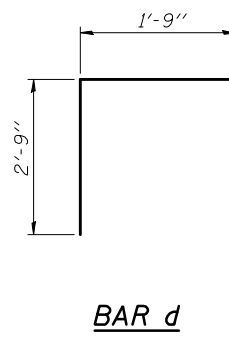
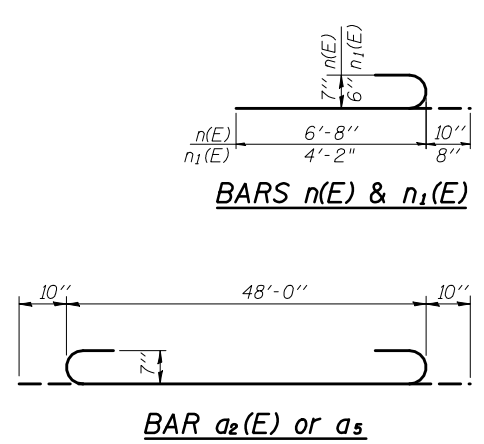
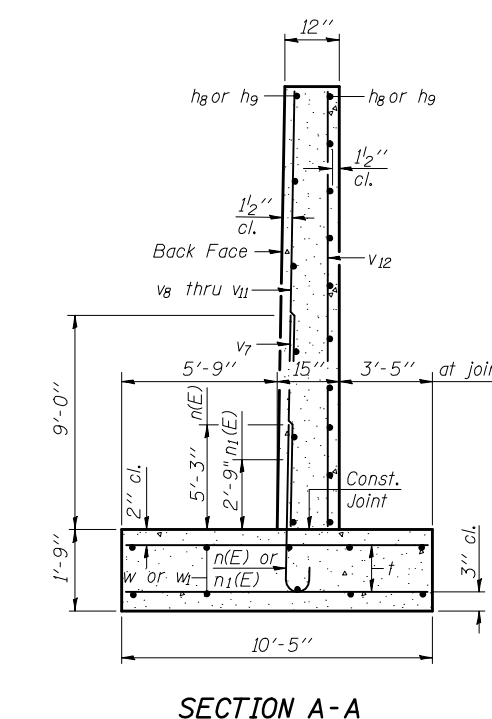
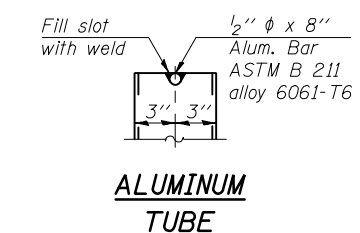
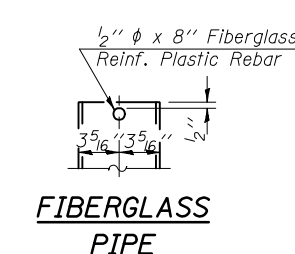
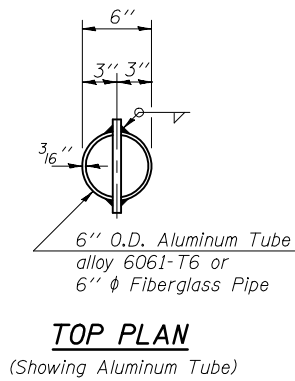
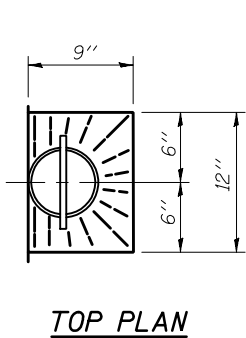
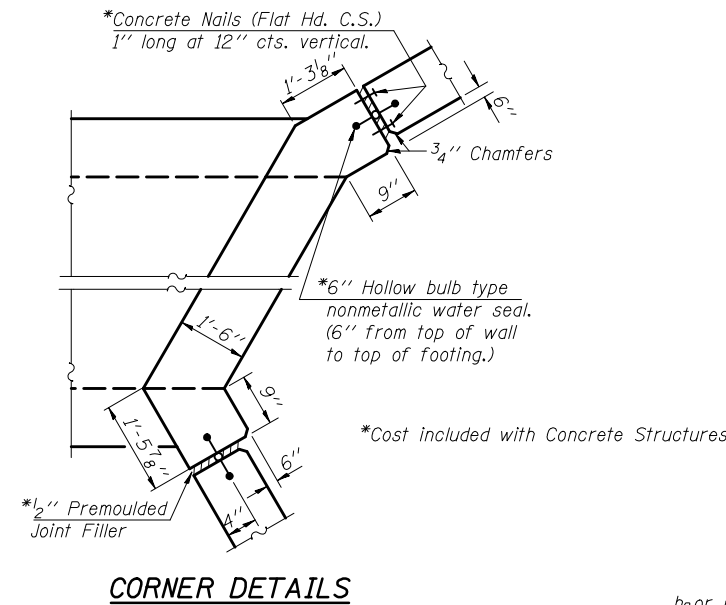
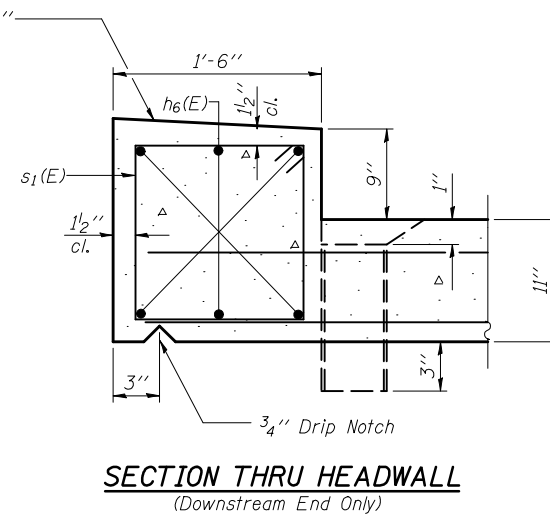
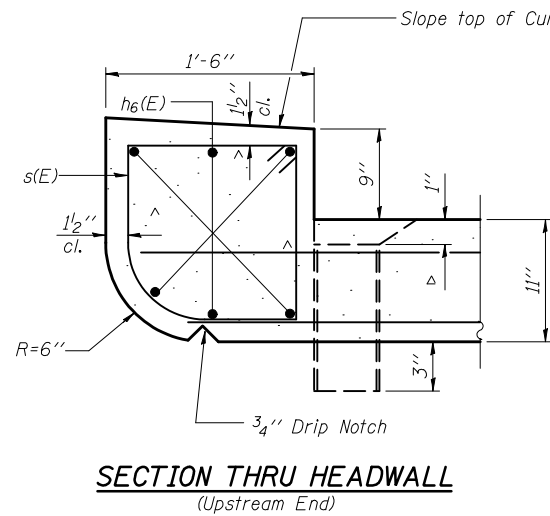


Contract #70393

BILL OF MATERIAL

Bar	No.	Size	Length	Shape
a(E)	76	#7	23'-2"	—
a ₁ (E)	76	#6	15'-0"	—
a ₂ (E)	72	#7	49'-8"	U
a ₃	78	#7	23'-2"	—
a ₄	52	#5	14'-7"	—
a ₅	72	#7	49'-8"	U
d	128	#4	5'-6"	—
h(E)	61	#6	26'-0"	—
h ₁ (E)	61	#6	17'-9"	—
h ₂ (E)	46	#5	26'-0"	—
h ₃ (E)	46	#5	17'-9"	—
h ₄	236	#5	26'-0"	—
h ₅	236	#5	17'-9"	—
h ₆ (E)	12	#6	46'-9"	—
h ₇	6	#5	46'-9"	—
h ₈	54	#4	23'-10"	—
h ₉	54	#4	18'-1"	—
n(E)	100	#7	7'-6"	U
n ₁ (E)	104	#6	4'-10"	U
s(E)	69	#4	5'-11"	U
s ₁ (E)	69	#4	6'-1"	U
s ₂ (E)	92	#5	4'-0"	U
t	204	#6	10'-1"	—
v	62	#5	13'-2"	—
v ₁	120	#6	14'-1"	—
v ₂	180	#5	14'-1"	—
v ₃	120	#6	4'-6"	—
v ₄	180	#5	4'-6"	—
v ₅	8	#5	7'-6"	—
v ₆	8	#5	14'-10"	—
v ₇	100	#6	8'-10"	—
v ₈	26	#4	4'-8"	—
v ₉	26	#4	6'-8"	—
v ₁₀	26	#4	8'-8"	—
v ₁₁	26	#4	10'-4"	—
v ₁₂	12	#4	29'-8"	—
v ₁₃ (E)	92	#4	3'-4"	—
w	28	#5	23'-10"	—
w ₁	28	#5	18'-1"	—
Reinforcement Bars	Pound		39120	
Reinforcement Bars, Epoxy Coated	Pound		23000	
Concrete Box Culverts	Cu. Yd.		380.5	
Bar Splicers	Each		343	



PLOT DATE = 10/16/2008
 FILE NAME = s:\503604\00\consultant\final plans\sheet-07.dgn
 PLOT SCALE = 0.250000 1" = 1'-0"
 USER NAME = stuf131m

ILLINOIS DEPARTMENT OF TRANSPORTATION

SHEET TITLE: CULVERT DETAILS

PROJECT: US 36 OVER HACKETT BRANCH
FAP RTE 323 SECTION 145 BR-1
DOUGLAS COUNTY
STATION 150+50
STRUCTURE NUMBER 021-2026

PROJECT NO. 03020
SCALE
DATE 06/05/07
DRAWN BY TFG
CHECKED BY CME/KS/MCB
DRAWING NO.

COOMBE-BLOXDORF P.C.
Engineers / Land Surveyors
Springfield, Illinois
Design Firm License No. 184-002708

7
OF 10 SHTS