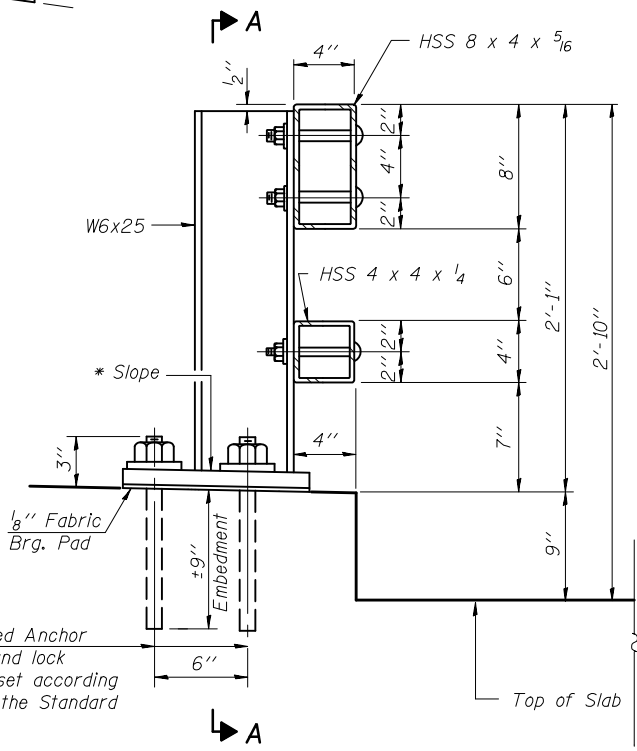
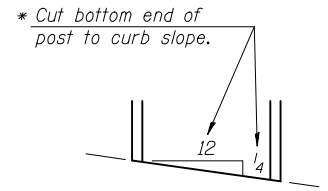
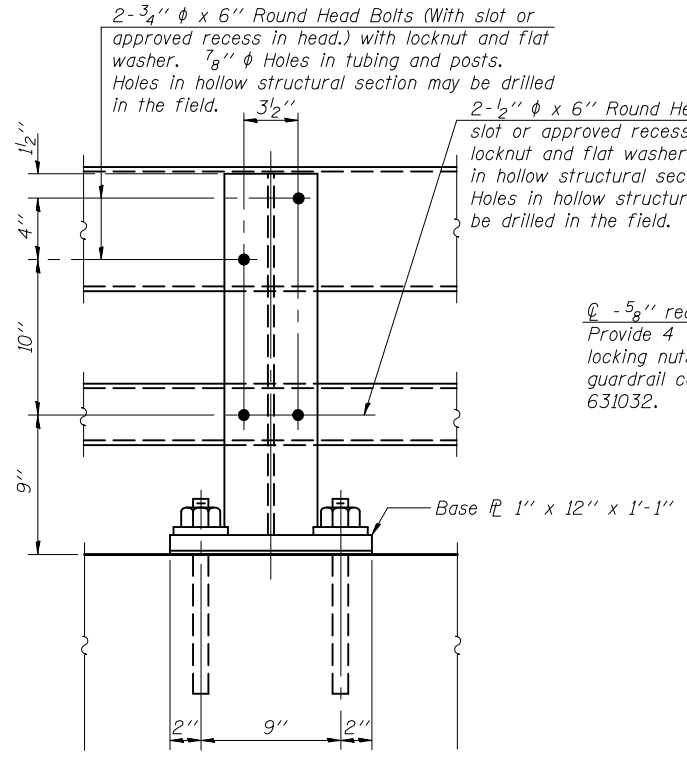


Contract #70393

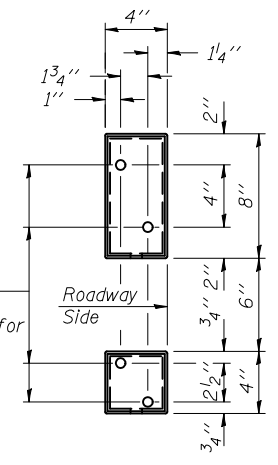


4- 1"  $\phi$  H.S. Threaded Anchor Rods with hex nuts and lock washers, drilled and set according to Article 509.06 of the Standard Specifications.

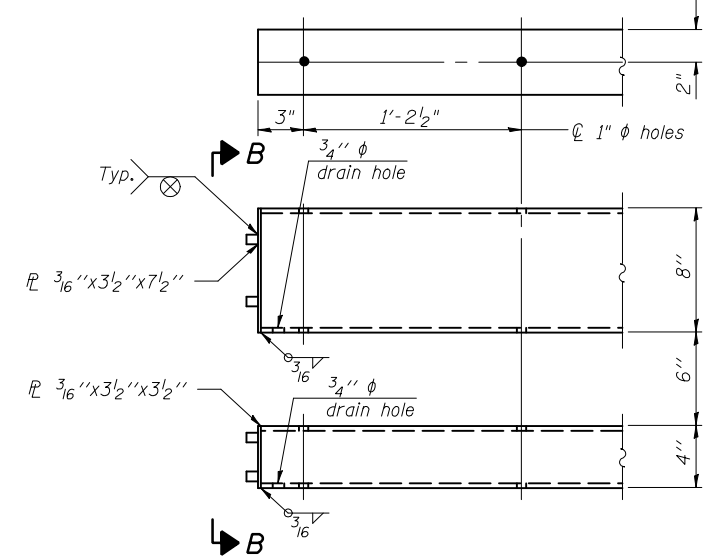
**SECTION AT RAIL POST**



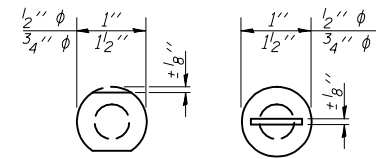
**SECTION A-A**



**VIEW B-B**



**END OF RAIL DETAILS**



**VIEW C-C**

Notes:  
 All field drilled holes shall be coated with an approved zinc rich paint before erection.  
 Posts shall not be located closer than 1'-3" to an existing bridge expansion joint or end of bridge.  
 Steel Bridge Rail expansion joint shall be provided between any two (2) posts which span a bridge expansion joint. Bolts located at expansion joint shall be provided with locknuts and shall be tightened to a point that will allow railing movement.  
 Provide one 1/8" and two 1/16" steel shims for 25% of the posts. Shims shall be similar to base plates in size and holes.  
 All steel rail elements shall be galvanized according to Article 509.05 of the Standard Specifications.

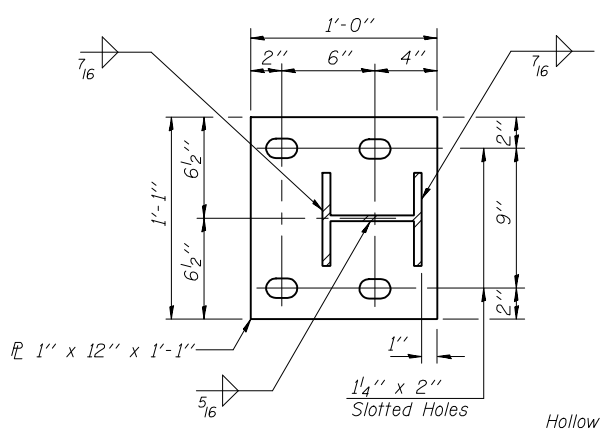
**BILL OF MATERIAL**

Item	Unit	Quantity
Steel Railing, Type 2399	Foot	93

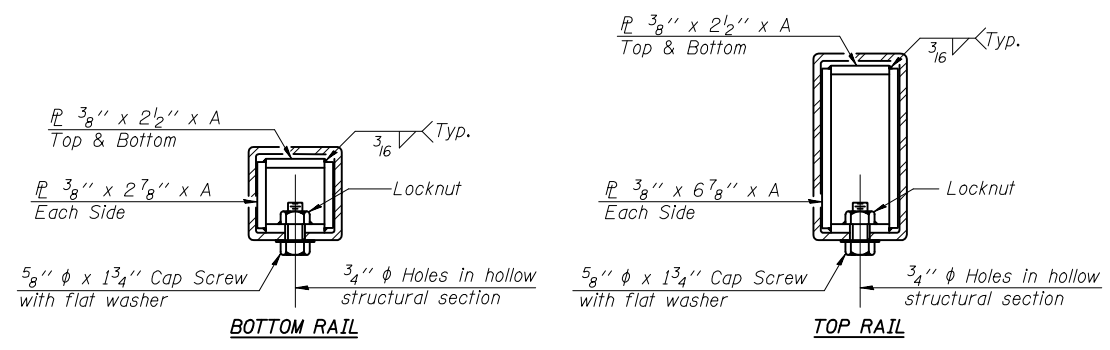
**SPLICE DIMENSIONS**

T	D	A	B	C	E
≤ 4"	2 1/2"	1'-8"	2"	4"	2 1/2"
> 4" ≤ 6 1/2"	3 3/4"	2'-0"	2 1/2"	5 1/2"	3 1/2"
> 6 1/2" ≤ 9"	5"	2'-4"	3 1/2"	6 1/2"	9"
> 9" ≤ 13"	7"	2'-10"	4 1/2"	8 1/2"	11"
Rail Splice	1/4"	1'-8"	2"	4"	—

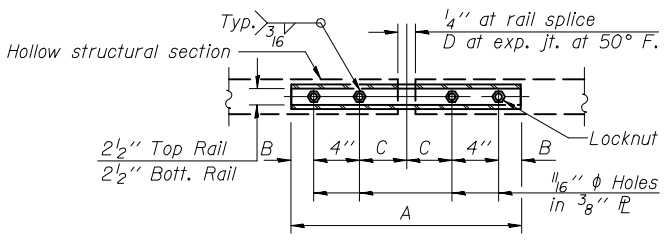
T = Total movement at expansion joint as shown on the design plans.



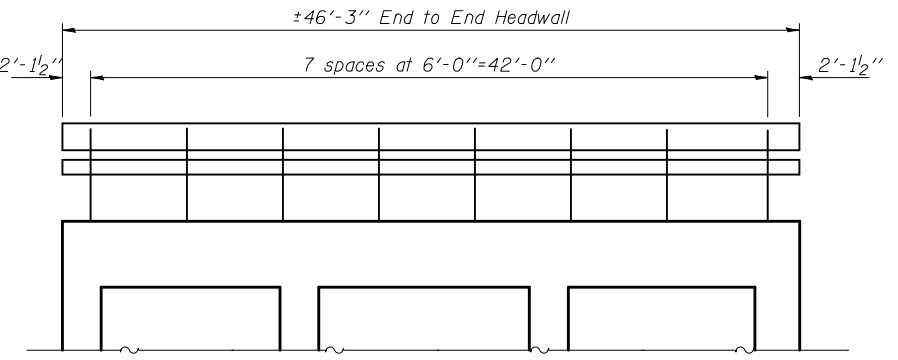
**BASE PLATE DETAIL**



**SECTIONS AT RAIL SPLICE**



**PLAN-BOTT. SPLICE TYPICAL**



**RAIL POST SPACING**  
(Dim. along skew)

(6'-3" Maximum Post Spacing)

ILLINOIS DEPARTMENT OF TRANSPORTATION

SHEET TITLE  
 STEEL RAILING, TYPE 2399

PROJECT  
 US 36 OVER HACKETT BRANCH  
 FAP RTE 323 SECTION 145 BR-1  
 DOUGLAS COUNTY  
 STATION 150+50  
 STRUCTURE NUMBER 021-2026

PROJECT NO. 03020  
 SCALE  
 DATE 06/05/07  
 DRAWN BY TFG/CFG  
 CHECKED BY CME/KS/MCB  
 DRAWING NO.

**COOMBE-BLOXDORF P.C.**  
 Engineers / Land Surveyors  
 Springfield, Illinois  
 Design Firm License No. 184-002708

8  
 OF 10 SHTS

PLOT DATE = 10/16/2008  
 FILE NAME = 03020.dwg  
 PLOT SCALE = 0.250000  
 USER NAME = stuf131