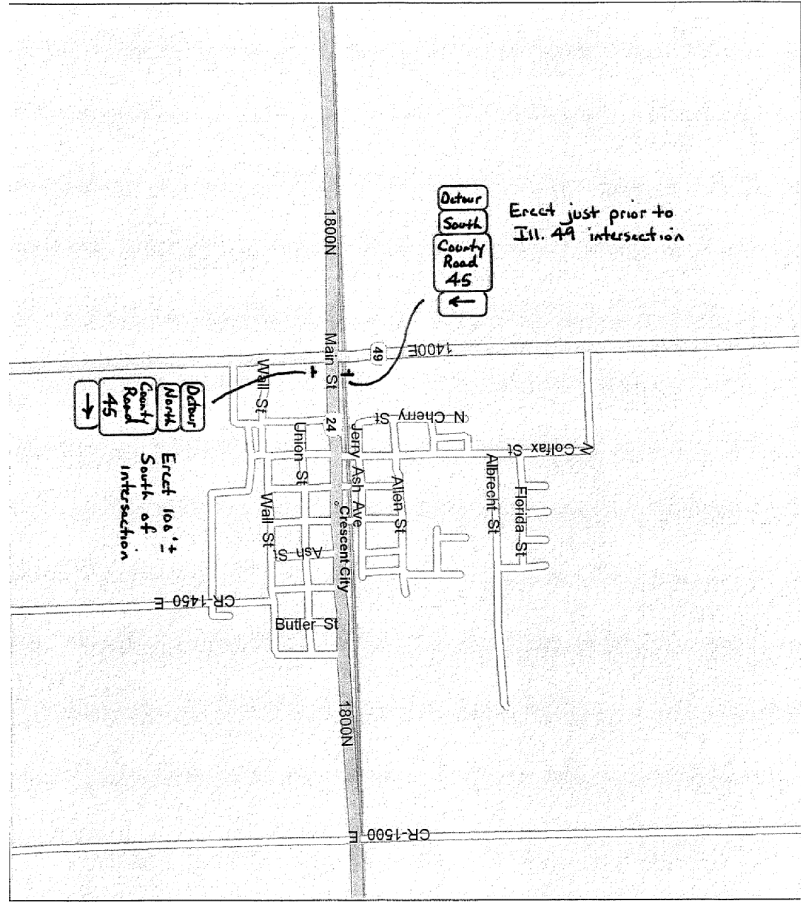
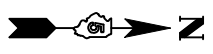


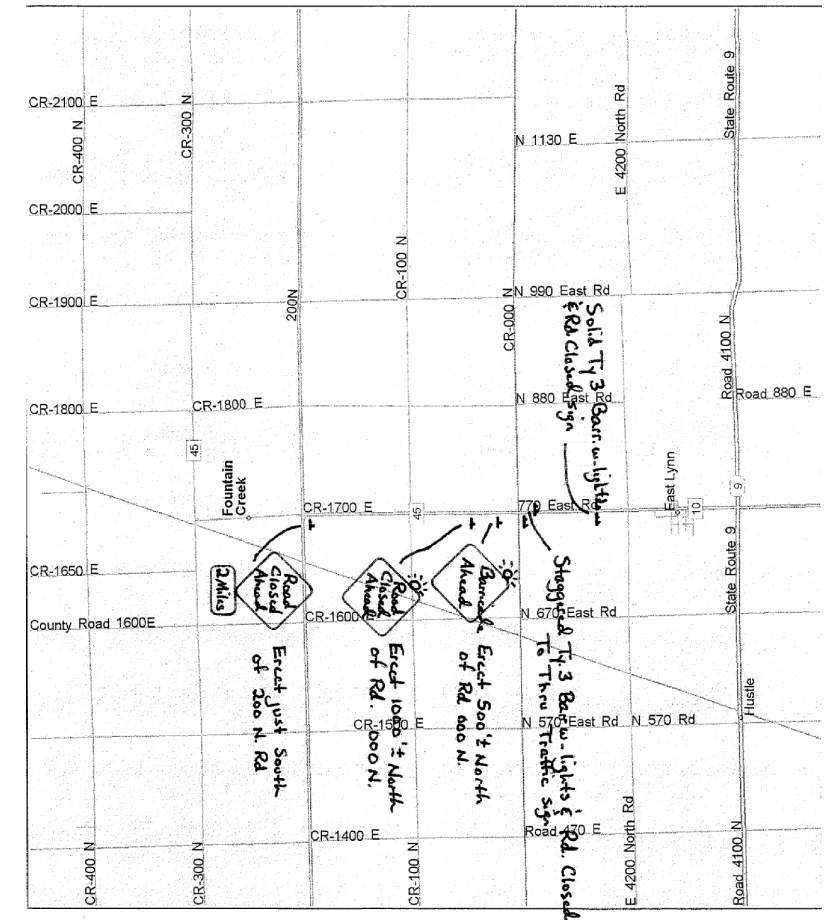
3



CRESCENT CITY



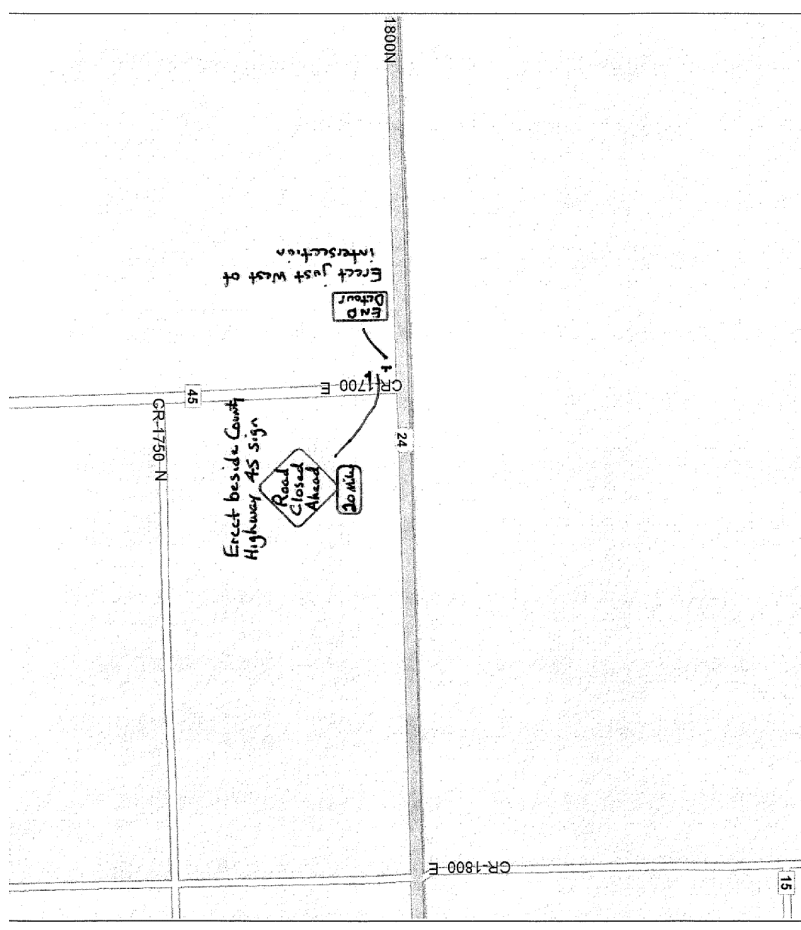
5



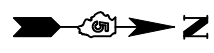
EAST LYNN



4



IL 24



### DETAIL NOTES

ALL DETOUR SIGN LOCATIONS ARE SUBJECT TO FIELD ADJUSTMENT IN CASE OF CONFLICTS. ANY ADJUSTMENTS WILL BE COORDINATED BY THE ENGINEER, THE CONTRACTOR, AND THE BUREAU OF OPERATIONS (CLARK PIPER) PRIOR TO ROAD CLOSURE.

CMS BOARD PLACEMENT SHALL BE COORDINATED WITH THE ENGINEER AND TRAFFIC CONTROL SUPERVISOR PRIOR TO CONSTRUCTION.

FURNISHING, PLACEMENT AND REMOVAL OF ALL DETOUR SIGNS SHALL BE IN ACCORDANCE WITH THE SPECIAL PROVISION FOR DETOUR SIGNING

REFER TO THE DETAIL FOR TRAFFIC CONTROL & PROTECTION DEVICES (ROAD & SIDEROAD/STREET CLOSURES) FOR ALL OTHER SIGNING AND PLACEMENT NOT SHOWN HEREIN THIS DETAIL

FILE NAME =	USER NAME = shererjm	DESIGNED - JMS	REVISED -
ct:\projects\d570749\cad\sheet\5\d570749-sh1-details.dgn		DRAWN - JMS	REVISED -
		CHECKED - JMS	REVISED -
		DATE - 090308	REVISED -

STATE OF ILLINOIS  
DEPARTMENT OF TRANSPORTATION

ROAD CLOSURE DETOUR DETAIL

SCALE: N/A SHEET NO. 2 OF 2 SHEETS STA. N/A TO STA. N/A

F.A.S. RTE.	SECTION	COUNTY	TOTAL SHEETS	SHEET NO.
331	(79-102)2009BBR	VERMILION	16	15
CONTRACT NO. 70749				
FED. ROAD DIST. NO. ILLINOIS FED. AID PROJECT				